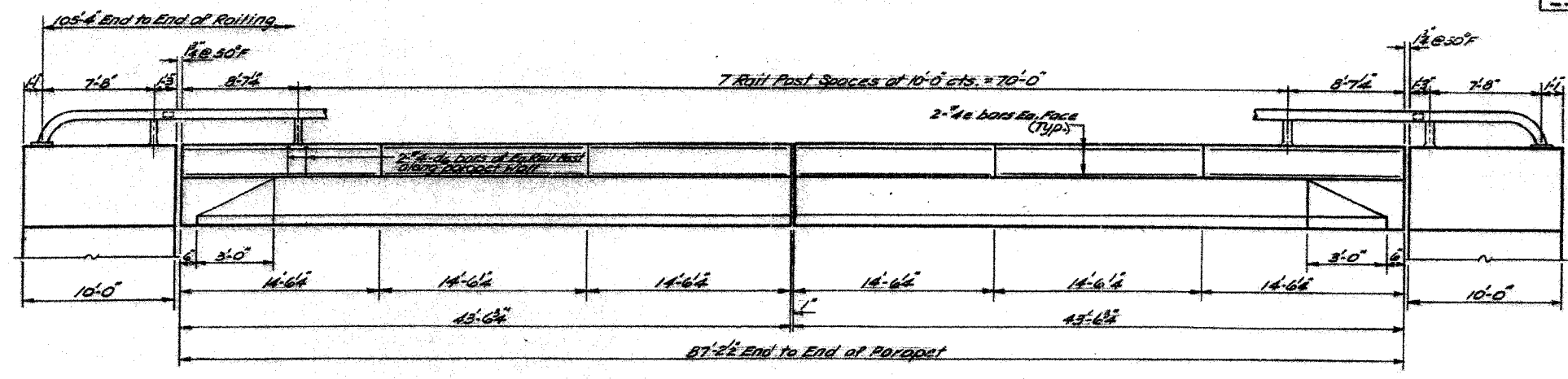


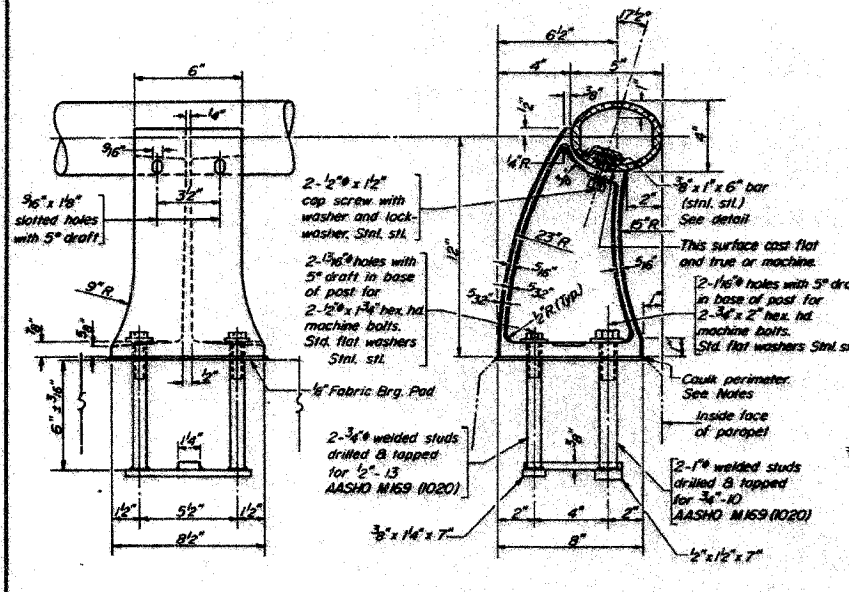
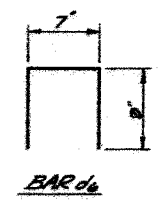
F.A.P. RTE.	SECTION	COUNTY	TOTAL SHEETS	SHEET NO.
68	105 BR-1	LIVINGSTON	45	30
STA.		TO STA.		
FED. ROAD DIST. NO.		ILLINOIS FED. AID PROJECT		

STATE OF ILLINOIS
DEPARTMENT OF TRANSPORTATION

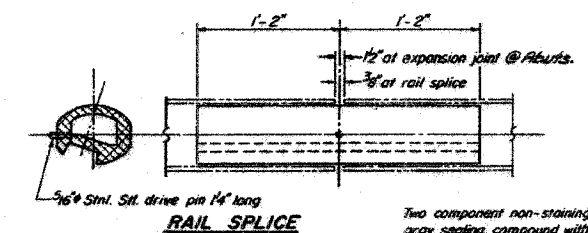
DESIGNED	CHECKED	DRAWN	DATE



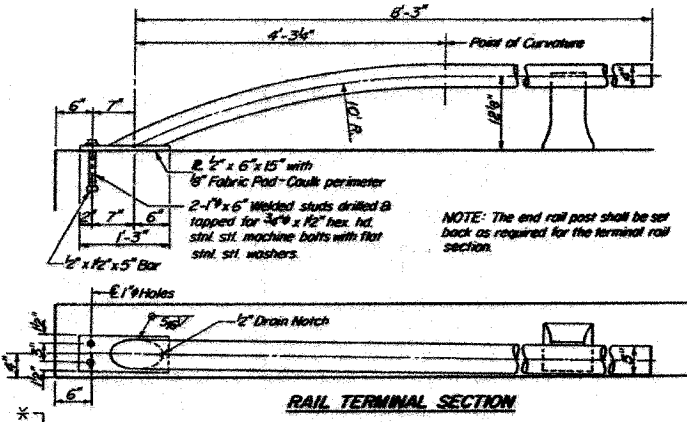
PARAPET & HANDRAIL ELEVATION



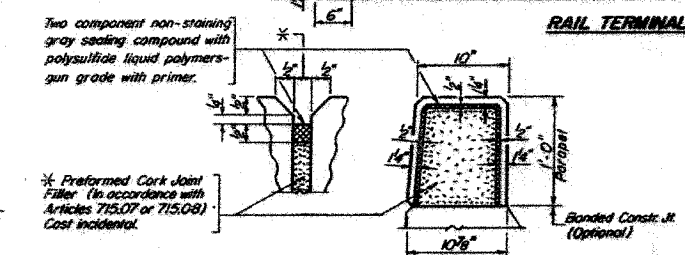
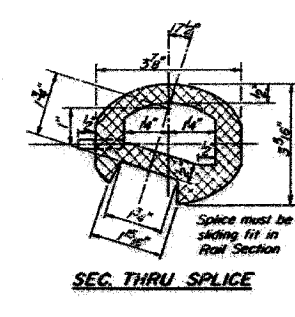
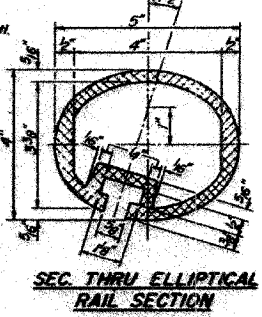
RAIL POST DETAILS



RAIL SPLICE



RAIL TERMINAL SECTION



PARAPET JOINT DETAIL

PARAPETS & RAILS
BILL OF MATERIAL

Bar	No.	Size	Length	Shape
e	48	1/2"	16'-3"	
d6	32	1/2"	2'-7"	
Reinforcement Bars	1 lb.		500	
Class X Concrete	Cu. Yds.		5.5	
Aluminum Fining	Lm. Ft.		217	

ALUMINUM RAILING
 EL RENS SEC 105 BR-1
 LIVINGSTON COUNTY
 STA 586+62.00

DESIGNED	CHECKED	DRAWN	DATE

R-17 4-15-73

NOTES
 * 1/2" @ Parapet Jts. + 1" @ Pier (Full depth)
 Stainless steel machine bolts or cap screws shall be in accordance with Article 715.37(a) of the Standard Specifications except the tensile strength requirement shall be modified to 100,000 psi.
 All Aluminum Alloy Extruded Rail shall be supplied in modular lengths of 30 feet, except at the end of bridge or over open joints in bridge deck where the rail shall be attached to a minimum of 2 posts. If the rail is on a horizontal curve of 2500 foot radius or less, the modular lengths may be reduced but shall be attached to a minimum of 2 posts.
 All joints in rail shall be spliced per detail.
 Provide 1-1/8" and 2-1/8" Aluminum Shims for 25% of the Posts. Rail element shall be parallel to Grade - high spots shall be ground and low spots shimmed.
 Seal perimeter of base of post to parapet with two component non-staining gray sealing compound with polysulfide liquid polymers, gun grade with primer. Fabric Bearing Pod shall have same dimensions as base of post.
 Aluminum alloy rail shall conform to ASTM B221 alloy 6061-T6 or 6351-T5 with min. yield 35 ksi, min. tensile 38 ksi, and elongation of 10% in 2 inches.

ILLINOIS DEPARTMENT OF TRANSPORTATION
 EXISTING BRIDGE PLANS
 FAP ROUTE 68 (IL RTE. 23)
 SECTION 105 BR-1
 LIVINGSTON COUNTY

REVISIONS	NAME	DATE

SCALE: VERT. HORIZ. DATE: 11/15/05
 DRAWN BY: SUTHEARD
 CHECKED BY: BOTT
 COMPUTER FILE NO. 03236.W011EPLN
 PROJECT 03236 W011 11/15/05 - MDS



FOR INFORMATION ONLY

PLOT DATE = 12/21/2005
 PLO. NAME = E:\03236\w011\gr...
 REFERENCE = REF.
 OPERATOR = michellai