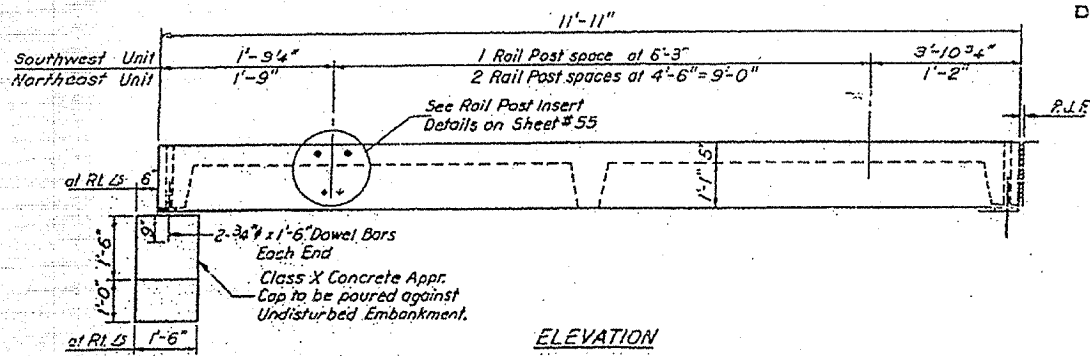


STATE OF ILLINOIS
DEPARTMENT OF PUBLIC WORKS & BUILDINGS
DIVISION OF HIGHWAYS

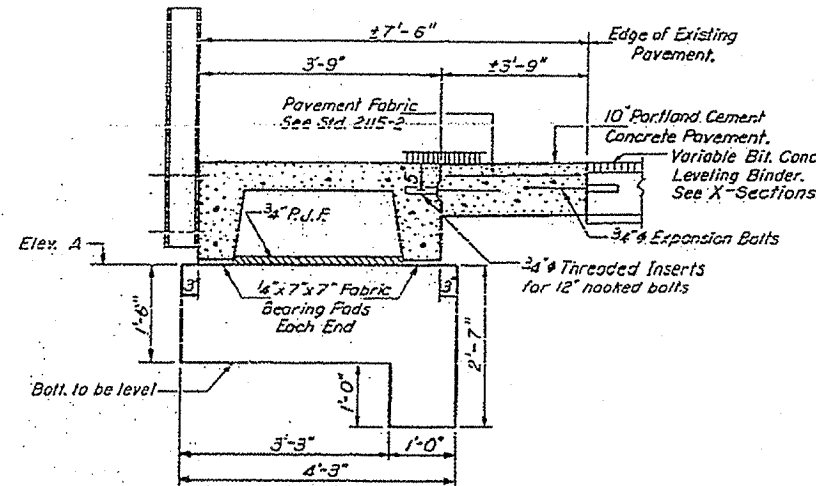
PROJECT NO.	DESIGNER	DATE	TOTAL SHEETS	CURRENT SHEET
S.B.I. 9	McLEAN	65	53	53

FOR THESE SHEETS, SEE: * 21, 22 (A, W & RS), 21BR, 21BR-1 & 22BR

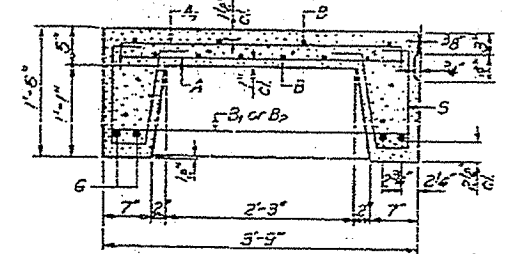


ELEVATION

Note: Furnish 2 Units.
North Unit Shown.
South Unit Similar except as noted.



SECTION A-A



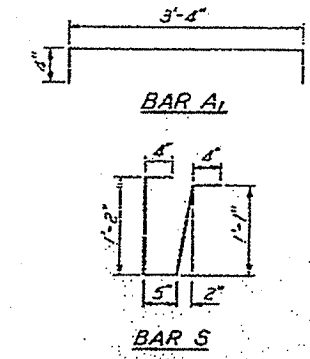
SECTION THRU PRECAST UNIT

FOR INFORMATION ONLY

BAR LIST - ONE UNIT

Reinforcement to be cast into slab

Bar	No.	Size	Length	Shape
A	55	#8	3'-3"	—
A ₁	17	#4	4'-0"	—
B	10	#4	11'-7"	—
B ₁	2	#4	5'-6"	—
B ₂	4	#4	5'-0"	—
G	4	#8	11'-7"	—
S	8	#3	3'-4"	—



NOTES

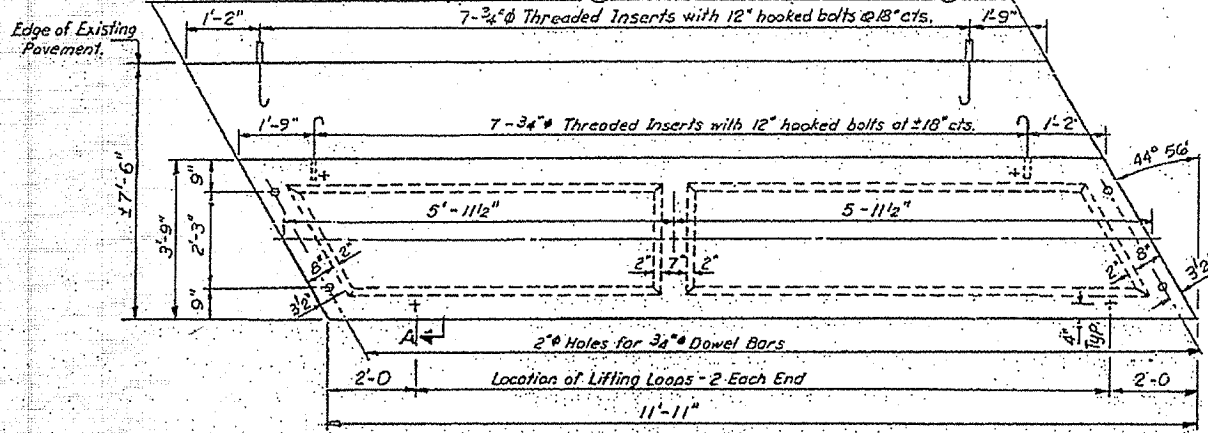
Unless otherwise approved by the Engineer, lifting loops shall be 1/2" 6x19 class wire rope with fiber core and shall have a minimum ultimate strength of 18,700 lbs. Loops shall be burned off after slab has been erected. Holes shall be drilled and anchor dowels grouted in place. Cost of reinforcement and accessories cast into the slab unit, bearing pads, furnishing, drilling for, placing and grouting anchor dowels and 3/4" hooked bolts is included in Unit bid price for "Precast Concrete Bridge Slab". The Precast Concrete Bridge Slab shall be erected and aligned with the exterior face of the exterior Deck Beam after Deck Beams are in final position.

TWO UNITS

TABLE OF ELEVATIONS

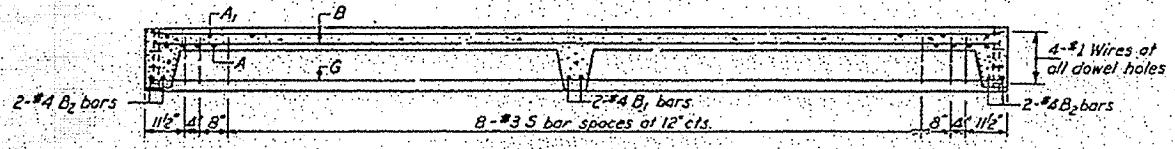
Station	Elevation	Notes
Sta. 1916+59.10	16.5' LT.	225.81
Sta. 1917+31.80	16.5' RT.	225.84
Sta. 1917+31.80	16.5' LT.	225.83
Sta. 1917+74.52	16.5' RT.	225.53

Material	Quantity
Precast Concrete Bridge Slab	Sq. Ft. 89
Portland Cement Concrete Pavement (00)	Sq. Yds. 10
Pavement Fabric	Sq. Yds. 10
Expansion Bolts 3/4"	Each 28
Class X Concrete	Cu Yds. 1.4

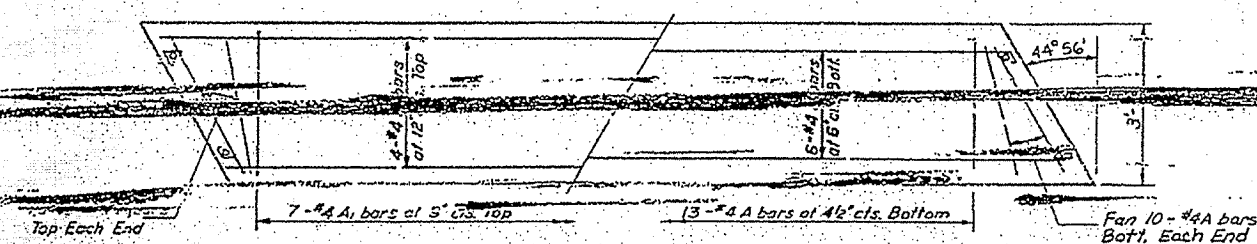


PARTIAL PLAN OF APPROACH

(North Unit Shown)
(South Unit Similar)

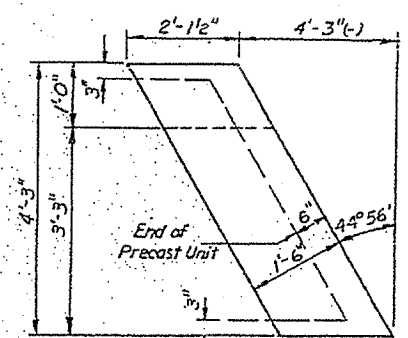


LONGITUDINAL SECTION

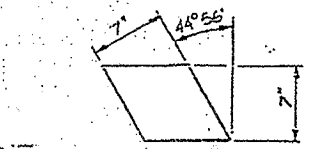


SLAB REINFORCEMENT

DESIGNED	G. P. Kogut
CHECKED	J. M. Buba
DRAWN	G. A. Sebastian
CHECKED	G. P. Kogut



PLAN - APPR. CAP



LIFTING LOOP DETAIL

STRESSES

f_c = 4,500 psi.
f_t = 1,800 psi.
f_s = 20,000 psi.
n = 8

LOADING HS-20

PRECAST CONCRETE BRIDGE SLAB
S.B.I. RTE. 9 OVER MONEY CREEK

SECTION 22 BR
McLEAN COUNTY