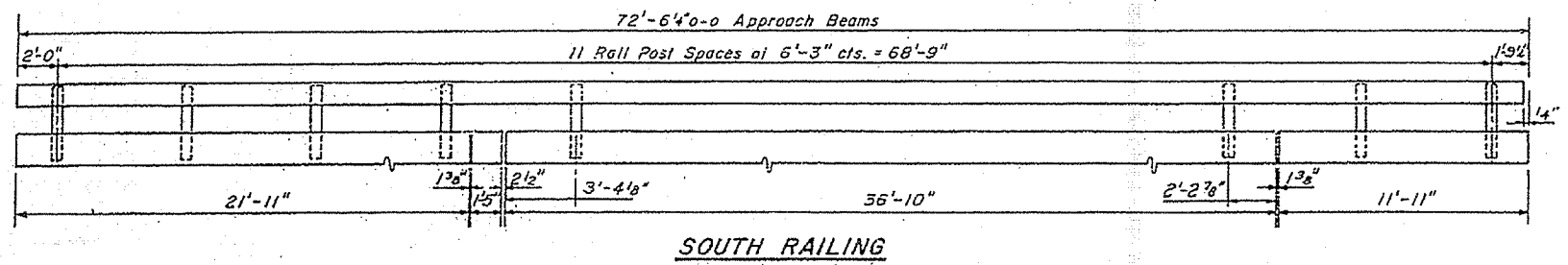


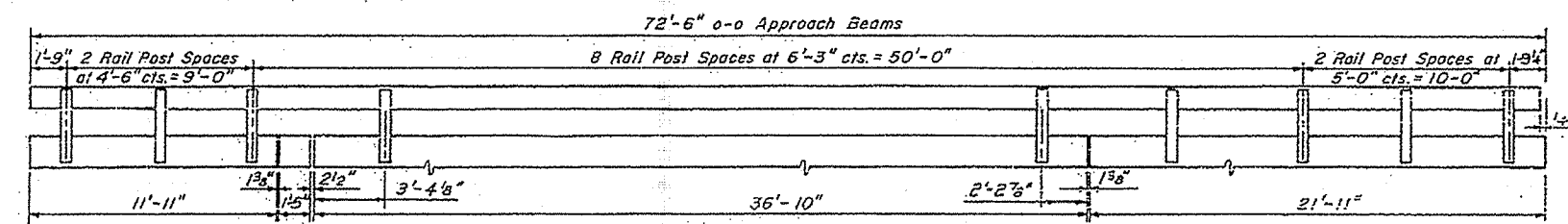
STATE OF ILLINOIS
DEPARTMENT OF TRANSPORTATION

DATE	NO.	BY	CHKD.	APP.
S.B.I. 9	*	McLEAN	ES	SS

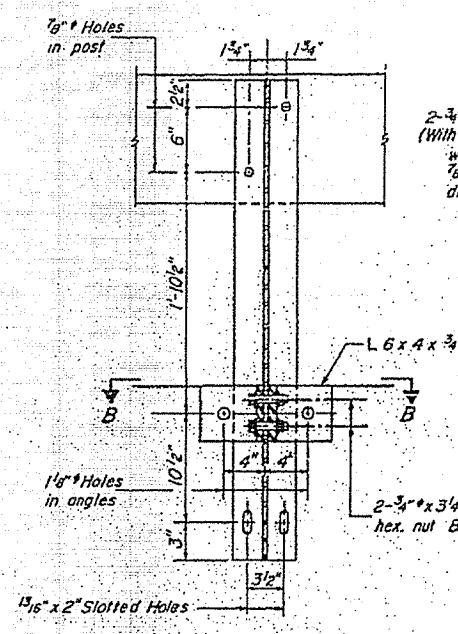
* 21, 22 (R, W6RS), 21BR, 21SR-1 & 22BR



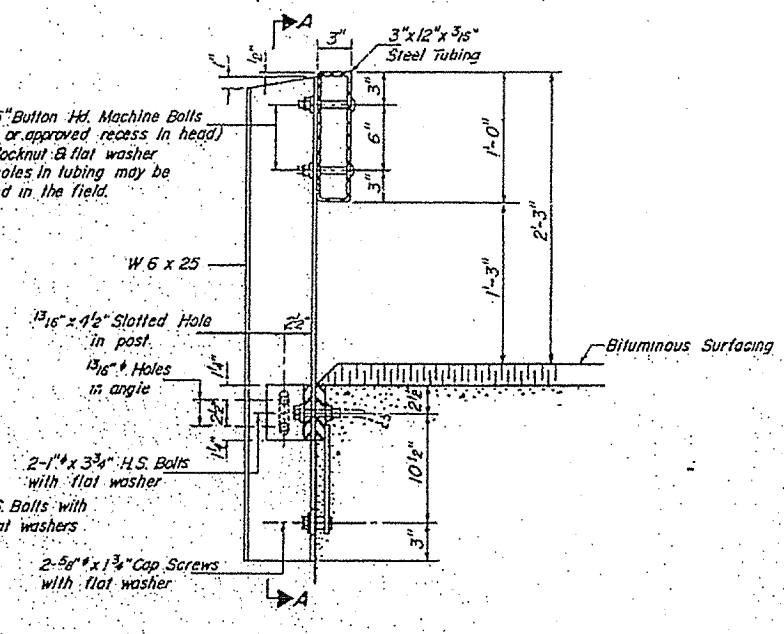
SOUTH RAILING



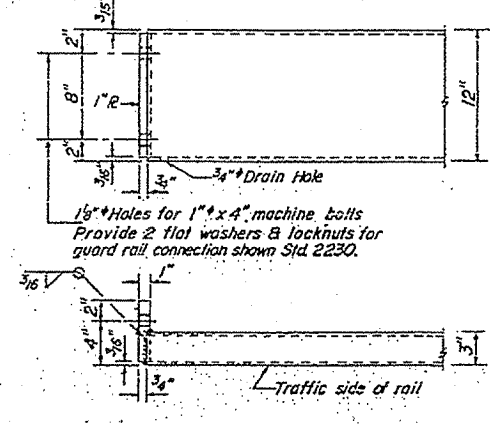
NORTH RAILING



SECTION A-A



SECTION AT RAIL POST



END OF RAIL DETAILS

NOTES

Hollow structural steel tubing shall conform to the requirements of ASTM designation A-500 Grade B or A-501 Structural Steel Tubing.

All other steel shapes and plates shall conform to the requirements of AASHTO designation M183 except posts shall conform to AASHTO M 188.

Bolts, cap screws, and nuts shall conform to the requirement of ASTM designation A-307 except for high strength bolts, nuts and washers noted which shall conform to ASTM designation A-325.

All bolts, nuts, cap screws, washers and lock washers shall be galvanized in accordance with AASHTO designation M 232.

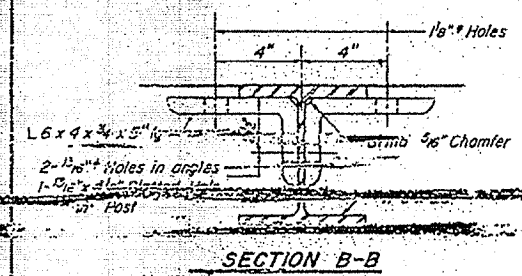
All posts, railing, rail spikes, anchor devices and angles shall be galvanized after shop fabrication in accordance with AASHTO designation M 111 and ASTM 500. Galvanized mill shall not be primed.

Railing shall be in accordance with Section 508 of the Standard Specifications, except as noted, and shall be paid for at the contract unit price per lineal foot for STEEL RAILING, TYPE S.

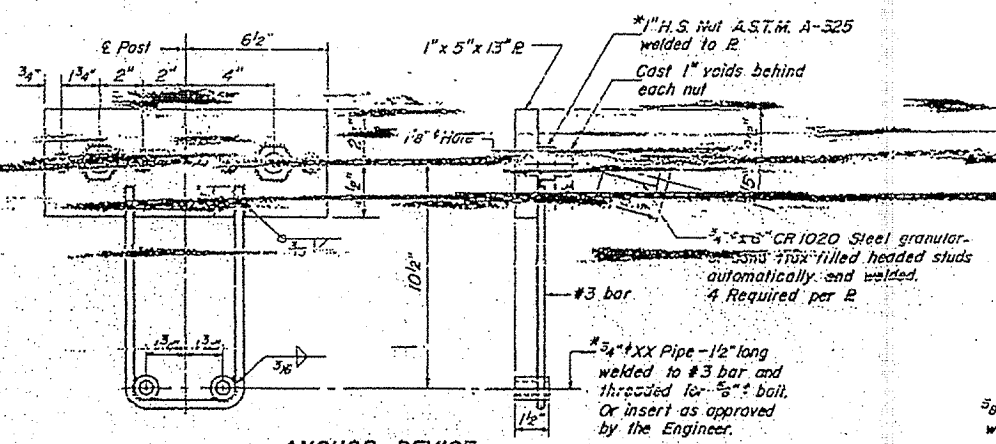
All field drilled holes shall be coated with an approved zinc rich paint before erection.

The lower portion of the post flange in contact with concrete shall receive two coats of asphalt paint conforming to Section 714.08 Type B or place 1/2" fabric bearing pad between the post and concrete.

The 3/4" high strength bolts used to connect the 6 x 4 x 3/4 angles to the post shall be tightened in accordance with Article 502.04(g)(3) of the Standard Specifications. The 1" high strength bolts connecting the angles to the concrete shall be tightened to a snug fit and given an additional 1/2 turn.

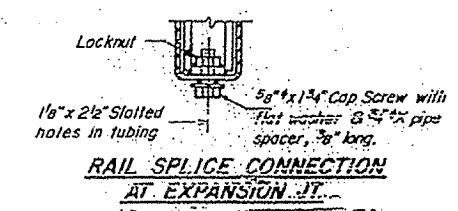


SECTION B-B

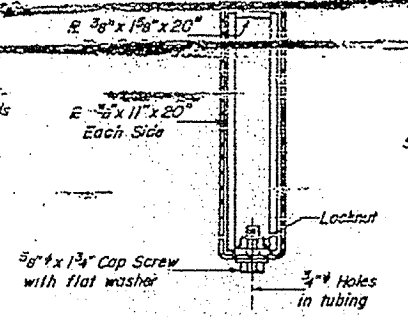


ANCHOR DEVICE

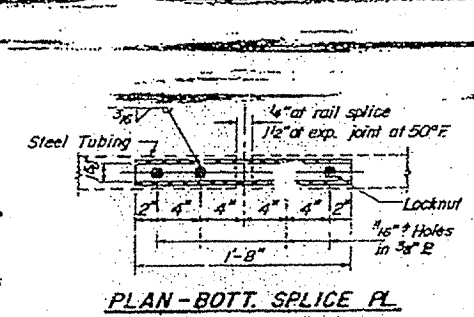
* Threaded areas shall be plugged or blocked off during casting of beam.



RAIL SPLICE CONNECTION AT EXPANSION J.T.



SECTION AT RAIL SPLICE



PLAN - BOTT. SPLICE PL. TYPICAL

FOR INFORMATION ONLY

DESIGNED	G. P. Rogut
CHECKED	J. M. Buba
DRAWN	G. A. Sebastian
CHECKED	G. P. Rogut

(6'-3" Maximum Post Spacing)

Item	Unit	Quantity
Steel Railing, Type S	Lin. Ft.	145

TYPE S STEEL RAILING
S.B.I. RTE. 9 OVER MONEY CREEK
SECTION 22 BR
MCLEAN COUNTY