

FAP RTE	SECTION	COUNTY	TOTAL SHEETS	SHEET NO.
68	101BR	LIVINGSTON	47	1

DIST. NO. ILLINOIS DEP. OF TRAN. CO.  
 P-93-036-04  
 D-93-007-06

### INDEX OF SHEETS

SHEET NO.	DESCRIPTION	SCALE
<b>ROADWAY PLANS</b>		
1.	COVER SHEET	
2.	GENERAL NOTES AND STANDARDS	1/4" = 1'
3.	SUMMARY OF QUANTITIES	
4.	TYPICAL SECTIONS	
5.	SCHEDULES OF QUANTITIES	
6.-8.	FAP RTE 68 (IL 23) PLAN AND PROFILE	1" = 100'
9.-10.	STAGE CONSTRUCTION PLANS	
11.	STAGE CONSTRUCTION DETAILS	
12.	EROSION CONTROL AND DRAINAGE PLAN	
13.	MISCELLANEOUS DETAILS	
14.	GUARDRAIL DETAILS	
<b>STRUCTURE PLANS</b>		
15.	GENERAL PLAN	1/4" = 1'
16.	GENERAL DATA	
17.	STAGE CONSTRUCTION DETAILS	
18.	TEMPORARY CONCRETE BARRIER	
19.	SUPERSTRUCTURE	1/4" = 1'
20.-21.	SUPERSTRUCTURE DETAILS	
22.	TYPE SM STEEL BRIDGE RAIL	
23.	CONTINUOUS SEAL TYPE NEOPRENE EXPANSION JOINTS	
24.	ANCHOR BOLT DETAILS	
25.	NORTH ABUTMENT	
26.	SOUTH ABUTMENT	
27.	ABUTMENT DETAILS	
28.	PIER 1	
29.	PIER 2	
30.	PIER DETAILS	
31.	BAR SPLICER ASSEMBLY DETAILS	
<b>EXISTING STRUCTURE PLANS</b>		
32.-41.	EXISTING STRUCTURE PLANS	
<b>CROSS SECTIONS</b>		
42.-47.	FAP RTE 68 (IL 23) CROSS SECTIONS	

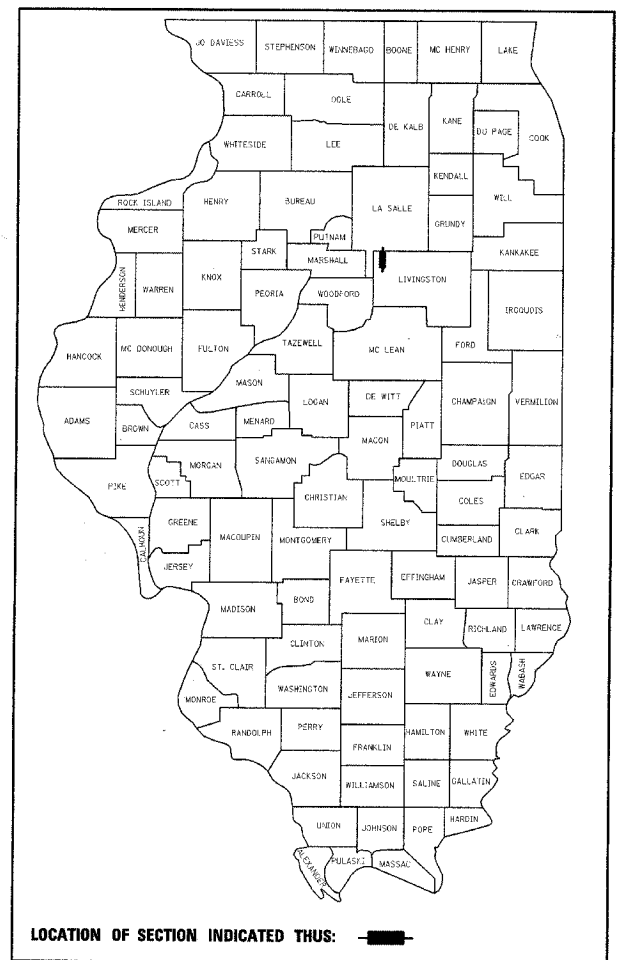
STATE OF ILLINOIS  
 DEPARTMENT OF TRANSPORTATION  
 DIVISION OF HIGHWAYS

# PROPOSED HIGHWAY PLANS

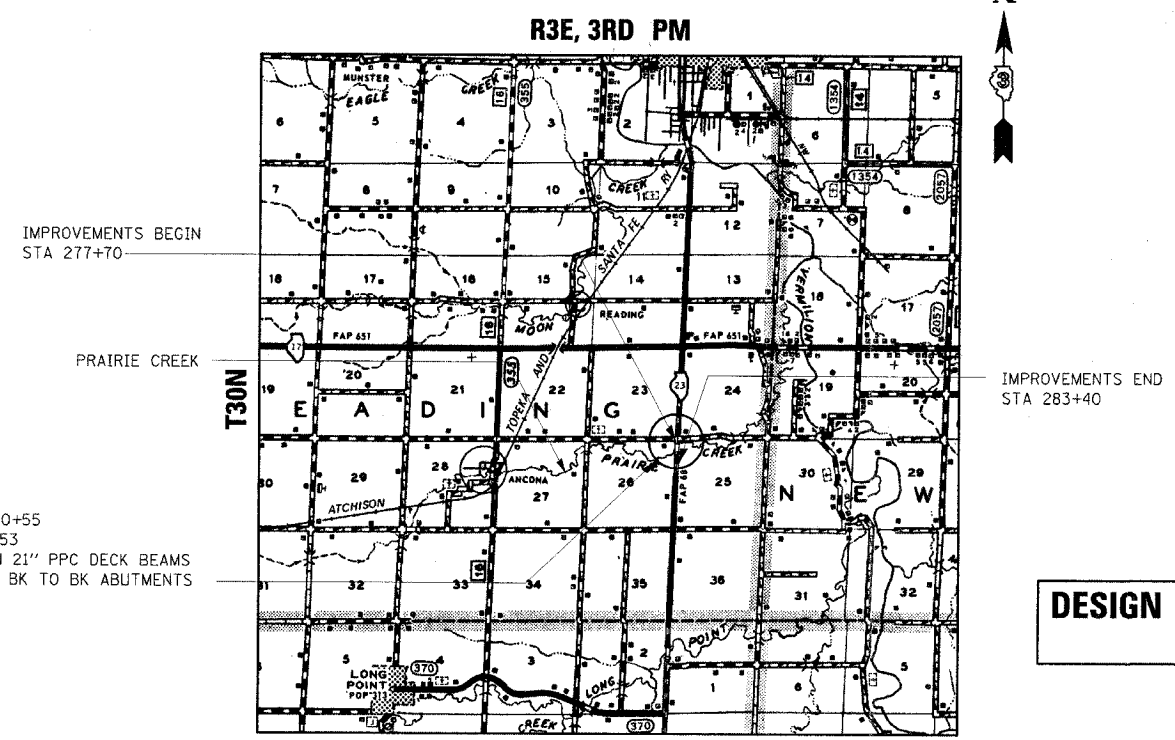
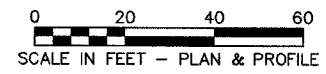
FAP ROUTE 68 (IL 23)  
 SECTION 101BR  
 PROJECT BHF-0068(098)  
 LIVINGSTON COUNTY

C - 93 - 002 - 06

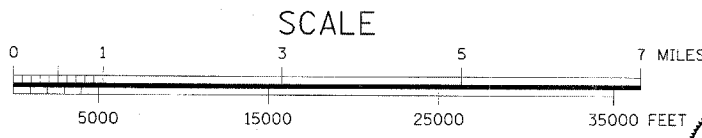
IL ROUTE 23 OVER PRAIRIE CREEK  
 SUPERSTRUCTURE REPLACEMENT



**FUNCTIONAL CLASSIFICATION: MINOR ARTERIAL (NON-URBAN)**  
**DESIGN SPEED: 55 mph**  
**POSTED SPEED: 55 mph**  
**ADT: 2060 (2006)**  
**PV: 89.7%**  
**SU: 6.2%**  
**MU: 4.1%**



LOCATION MAP



GROSS LENGTH = 570 FT. = 0.108 MI.  
 NET LENGTH = 570 FT. = 0.108 MI.

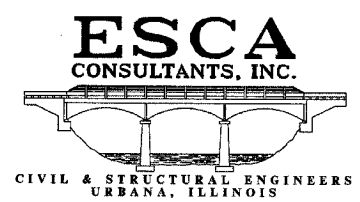
**DESIGN DESIGNATION N.A.**

FULL SIZE PLANS HAVE BEEN PREPARED USING STANDARD ENGINEERING SCALES. REDUCED SIZED PLANS WILL NOT CONFORM TO STANDARD SCALES. IN MAKING MEASUREMENTS ON REDUCED PLANS, THE ABOVE SCALES MAY BE USED.

MICROFILMED \_\_\_\_\_  
 REEL NUMBER \_\_\_\_\_  
 AWARDED \_\_\_\_\_  
 RESIDENT ENGINEER \_\_\_\_\_  
 AS BUILT CHANGES WERE MADE ON THE FOLLOWING SHEETS \_\_\_\_\_

J.U.L.I.E.  
 JOINT UTILITY LOCATION INFORMATION FOR EXCAVATION  
 1-800-892-0123

DISTRICT 3 NO. (815) 434-6131  
 PROJECT ENGINEER: DAN DRAPER  
 UNIT CHIEF: PAT BRABOY  
 TOWNSHIP: READING  
 CONTRACT NO.: 66606



Richard D. Payne DATE: 12/21/2005  
 ILLINOIS PROFESSIONAL LICENSE NO. 37421  
 (EXPIRATION DATE: 11-30-05)

STATE OF ILLINOIS  
 DEPARTMENT OF TRANSPORTATION  
 DIVISION OF HIGHWAYS

SUBMITTED \_\_\_\_\_ 20

*Amey P. Marton*  
 DEPUTY DIRECTOR OF HIGHWAYS, REGION ENGINEER

*February 3, 2006*  
*Mike Hine*  
 ENGINEER OF DESIGN AND ENVIRONMENT

*February 3, 2006*  
*Milton R. Sear*  
 DIRECTOR OF HIGHWAYS, CHIEF ENGINEER

**PRINTED BY THE AUTHORITY OF THE STATE OF ILLINOIS**