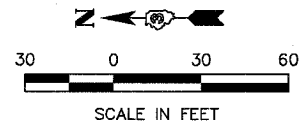


FAP RTE	SECTION	COUNTY	TOTAL SHEETS	SHEET NO.
68	101BR	LIVINGSTON	47	9
STA. 275+00		TO STA. 285+50		
FED. ROAD DIST. NO. ILLINOIS FED. AID PROJECT				

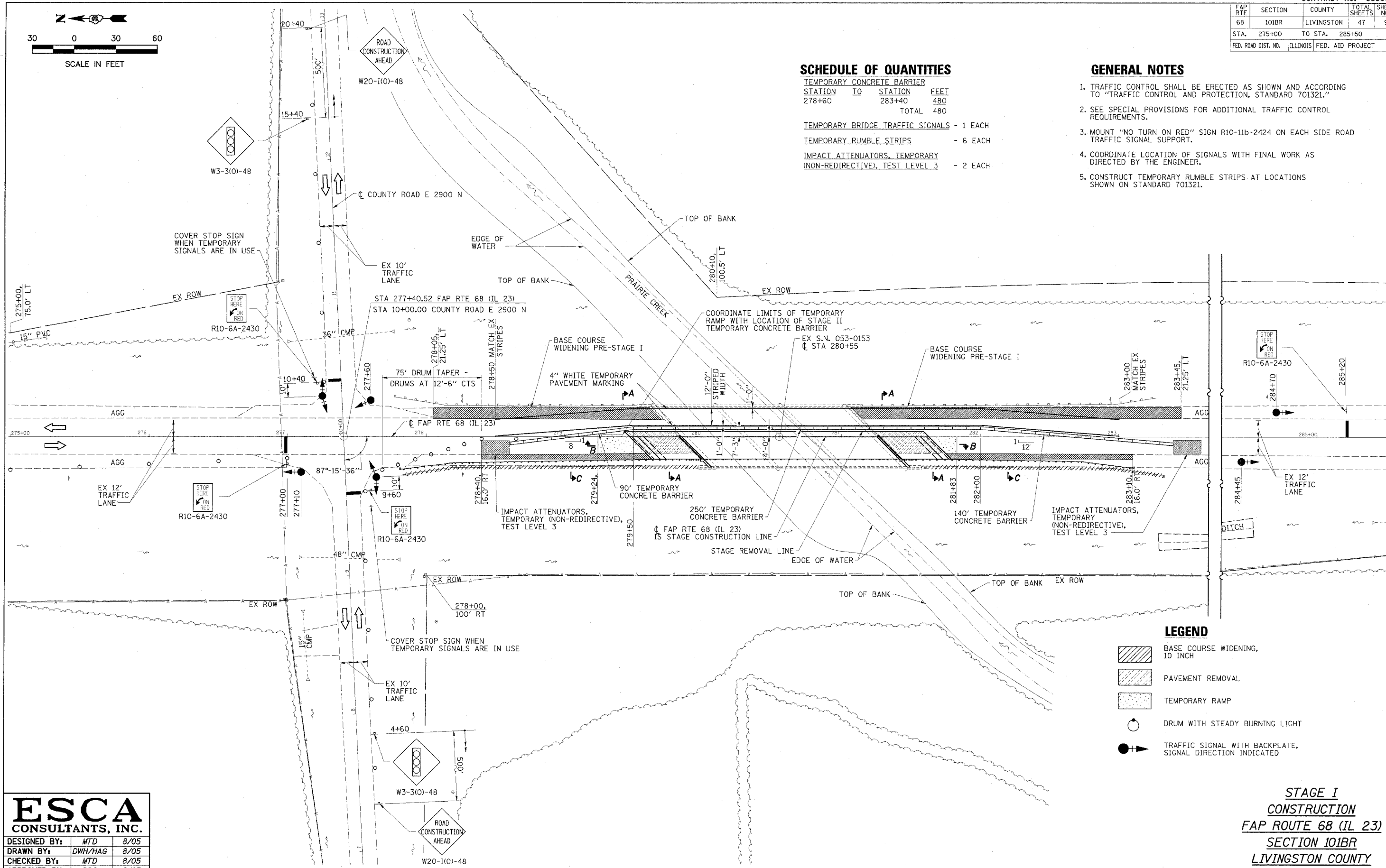


SCHEDULE OF QUANTITIES

TEMPORARY CONCRETE BARRIER	STATION TO	STATION	FEET
	278+60	283+40	480
			TOTAL 480
TEMPORARY BRIDGE TRAFFIC SIGNALS - 1 EACH			
TEMPORARY RUMBLE STRIPS - 6 EACH			
IMPACT ATTENUATORS, TEMPORARY (NON-REDIRECTIVE), TEST LEVEL 3 - 2 EACH			

GENERAL NOTES

1. TRAFFIC CONTROL SHALL BE ERECTED AS SHOWN AND ACCORDING TO "TRAFFIC CONTROL AND PROTECTION, STANDARD 701321."
2. SEE SPECIAL PROVISIONS FOR ADDITIONAL TRAFFIC CONTROL REQUIREMENTS.
3. MOUNT "NO TURN ON RED" SIGN R10-11b-2424 ON EACH SIDE ROAD TRAFFIC SIGNAL SUPPORT.
4. COORDINATE LOCATION OF SIGNALS WITH FINAL WORK AS DIRECTED BY THE ENGINEER.
5. CONSTRUCT TEMPORARY RUMBLE STRIPS AT LOCATIONS SHOWN ON STANDARD 701321.



LEGEND

- BASE COURSE WIDENING, 10 INCH
- PAVEMENT REMOVAL
- TEMPORARY RAMP
- DRUM WITH STEADY BURNING LIGHT
- TRAFFIC SIGNAL WITH BACKPLATE, SIGNAL DIRECTION INDICATED

ESCA
CONSULTANTS, INC.

DESIGNED BY:	MTD	8/05
DRAWN BY:	DWH/HAG	8/05
CHECKED BY:	MTD	8/05
APPROVED BY:	RDP	9/05

**STAGE I
CONSTRUCTION
FAP ROUTE 68 (IL 23)
SECTION 101BR
LIVINGSTON COUNTY**