

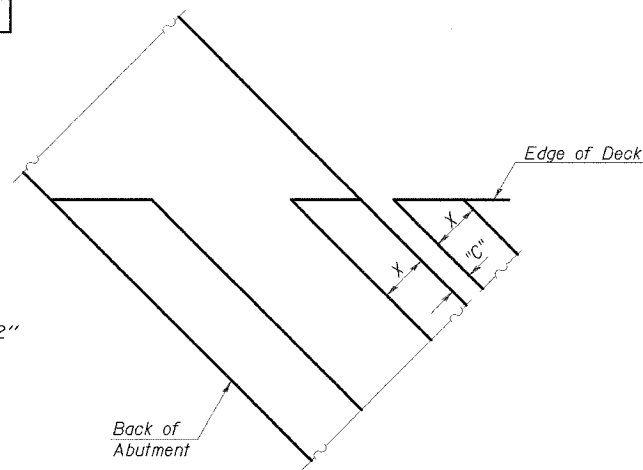
ROUTE NO.	SECTION	COUNTY	TOTAL SHEETS	SHEET NO.
FAP 68	101BR	LIVINGSTON	47	23
STA.	TO STA.		PROJECT-	
FED. ROAD DIST. NO.	ILL. ROAD	FED. ROAD PROJECT-	CONTRACT NO. 66606	
DWG. NO. 9 OF 17				

Joint Size	"C" at 50°F	"D" at 50°F
2"	2"	1½" Min.
2½"	2½"	1¾" Min.
4"	3"	2½" Min.

INSTALLATION NOTES

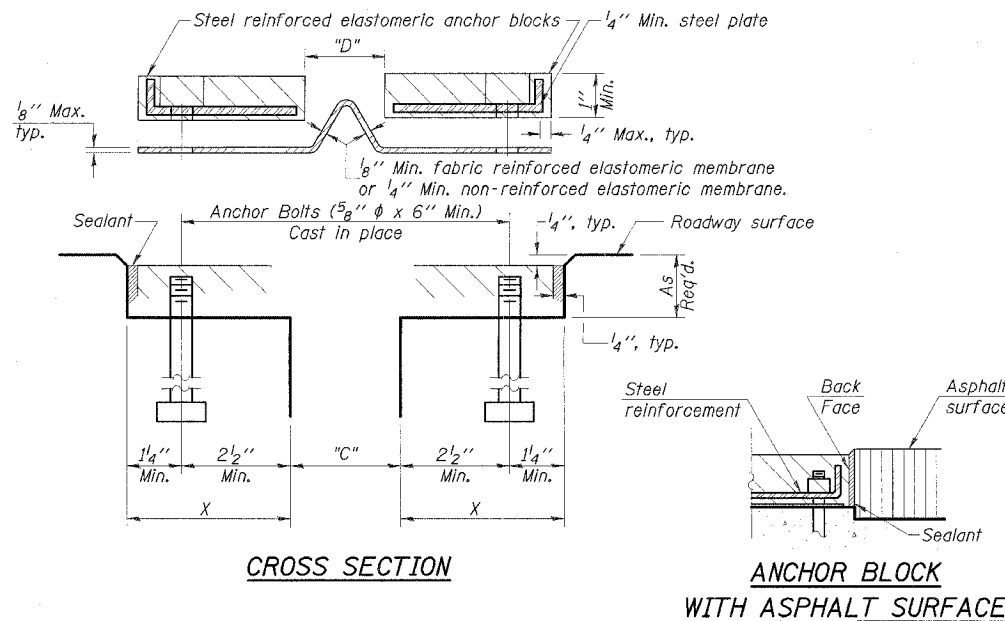
- ① Install continuous seal in roadway
- ② Install anchor blocks as indicated.

Note A:
Maximum spacing of anchor bolts shall be 12" centers.



FORMING BLOCKOUT SKETCH

STATE OF ILLINOIS
DEPARTMENT OF TRANSPORTATION



CROSS SECTION

ANCHOR BLOCK WITH ASPHALT SURFACE

GENERAL NOTES

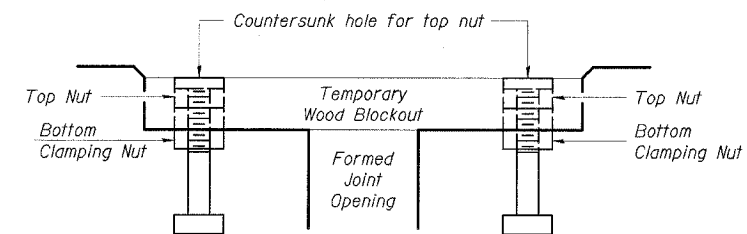
Continuous Seal Neoprene Expansion Joint shall consist of molded anchor blocks of elastomer and steel, field assembled over continuous lengths of elastomeric membrane.

The elastomeric membrane shall be premolded with a single or a double upward convolution that will have a "memory" to return to its molded position upon joint closure.

The convolution length shall be such that the extended length will not be greater than the manufactured length when the joint is fully expanded in its design range and will not protrude above the anchor blocks when the joint is fully compressed.

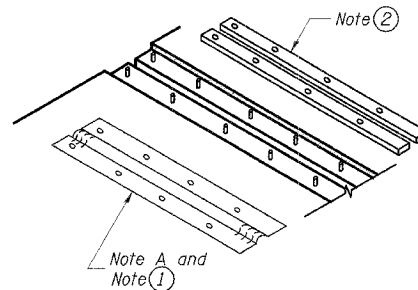
Joint openings shall be adjusted according to Article 503.10(c) of the Standard Specifications when the deck is poured at an ambient temperature other than 50° F.

The membrane shall be made continuous by an approved vulcanizing process. Lapping will not be permitted.



Note:
Stud needs to be threaded lower to allow for use of clamping nut.

Anchor studs should be stainless
RECOMMENDED BLOCKOUT DETAIL



INSTALLATION DETAIL

ESCA
CONSULTANTS, INC.

DESIGNED BY:	ELH	8/05
DRAWN BY:	DWH	8/05
CHECKED BY:	ELH	9/05
APPROVED BY:	RDP	9/05

**CONTINUOUS SEAL TYPE
NEOPRENE EXPANSION JOINTS
IL 23 OVER PRAIRIE CREEK
FAP ROUTE 68 - SECTION 101BR
LIVINGSTON COUNTY
STATION 280+55.00
STRUCTURE NO. 053-0153**