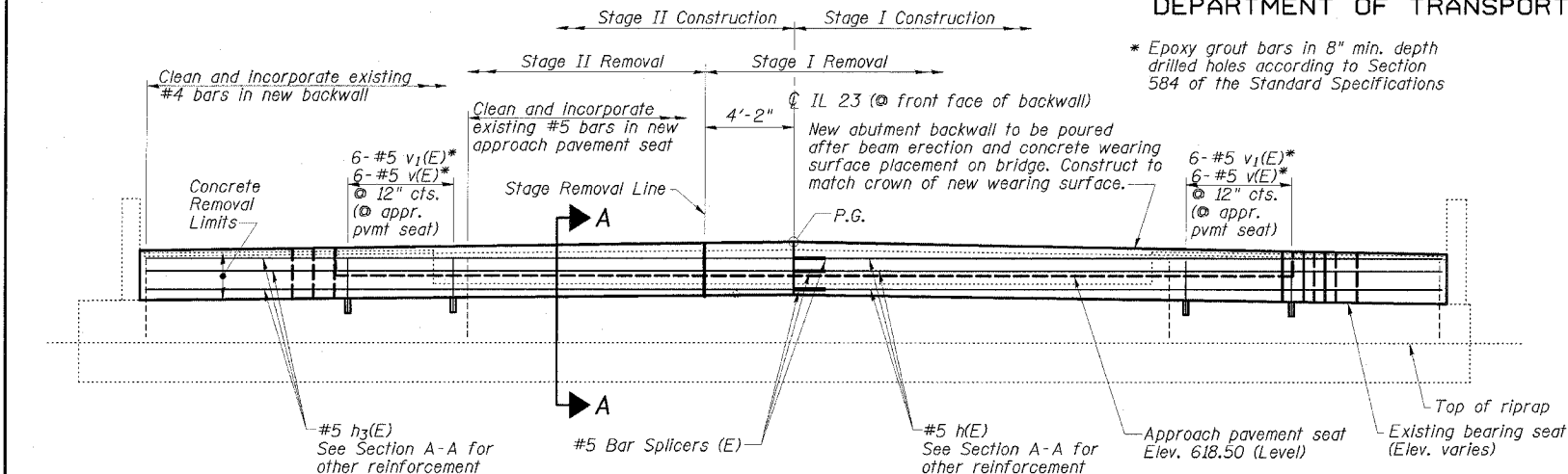


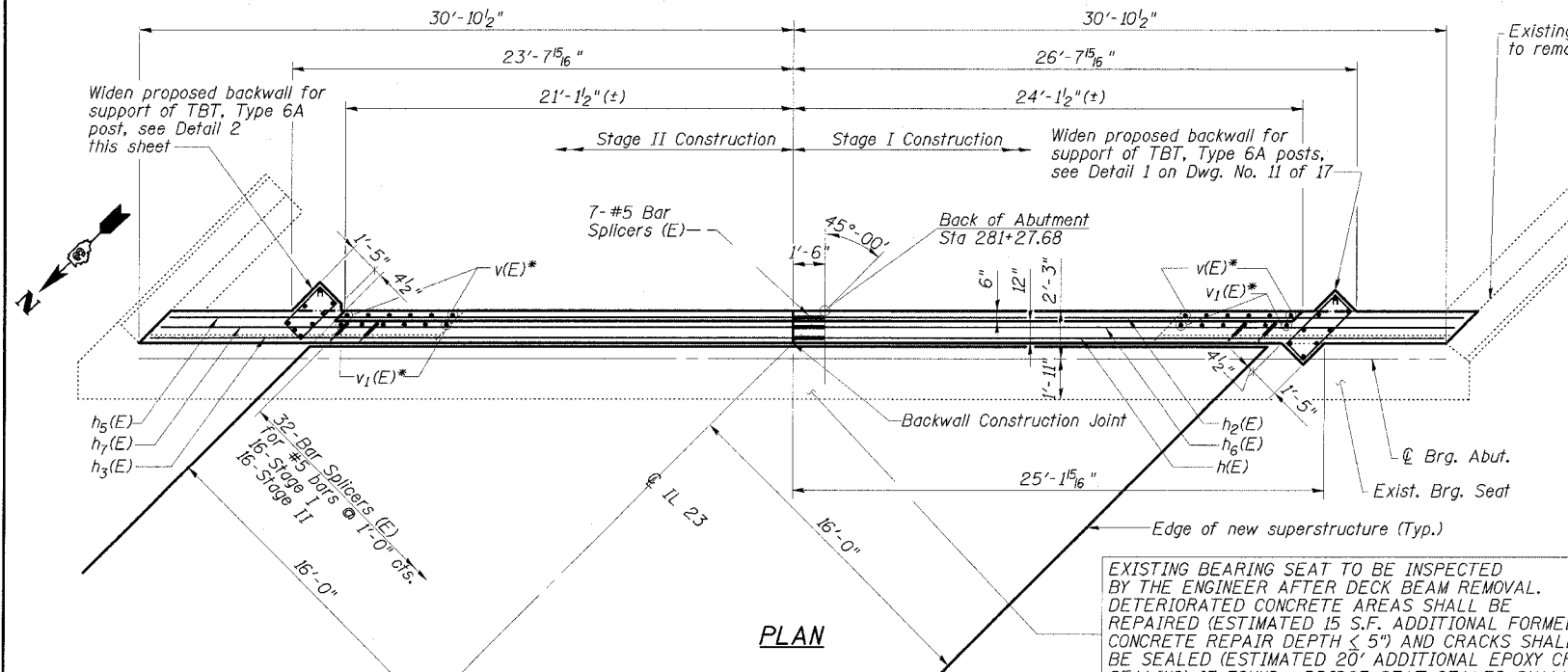
STATE OF ILLINOIS
DEPARTMENT OF TRANSPORTATION

ROUTE NO.	SECTION	COUNTY	TOTAL SHEETS	SHEET NO.
FAP 68	101BR	LIVINGSTON	47	26
STA.	TO STA.			
	ILLINOIS		FED. AID PROJECT-	
DWG. NO. 12 OF 17				

CONTRACT NO. 66606

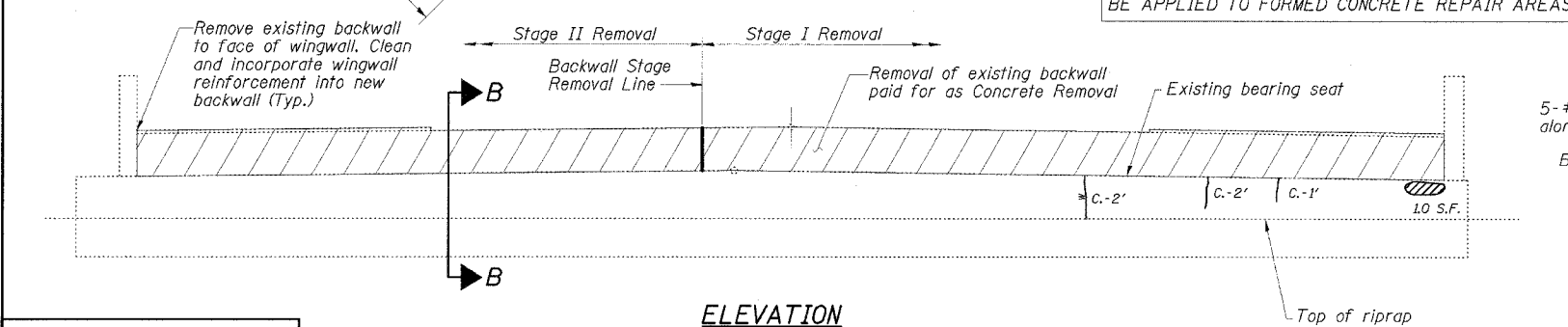


ELEVATION
Backwall Repairs



PLAN

EXISTING BEARING SEAT TO BE INSPECTED BY THE ENGINEER AFTER DECK BEAM REMOVAL. DETERIORATED CONCRETE AREAS SHALL BE REPAIRED (ESTIMATED 15 S.F. ADDITIONAL FORMED CONCRETE REPAIR DEPTH < 5") AND CRACKS SHALL BE SEALED (ESTIMATED 20' ADDITIONAL EPOXY CRACK SEALING) IF FOUND. BRIDGE SEAT SEALER SHALL BE APPLIED TO FORMED CONCRETE REPAIR AREAS.

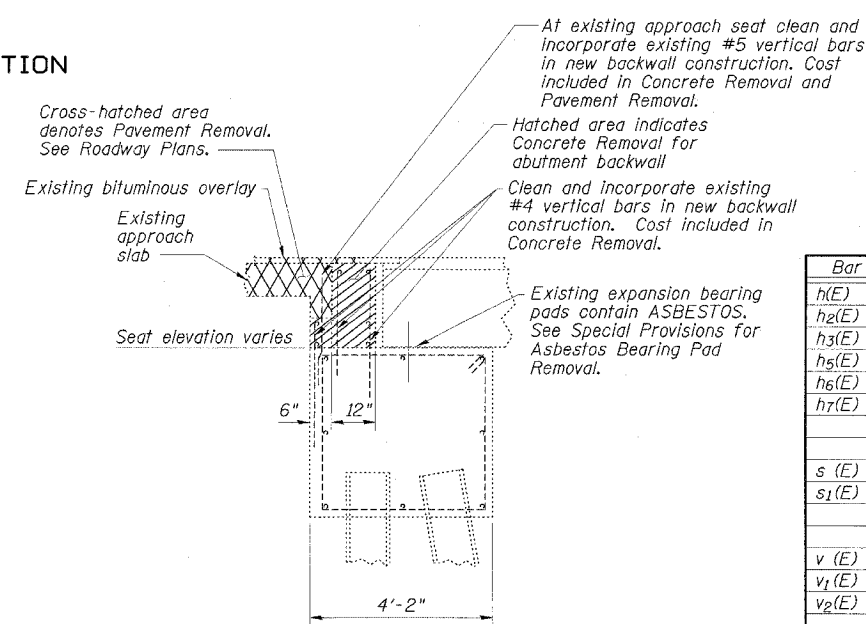


ELEVATION
Cap and Wingwall Repairs

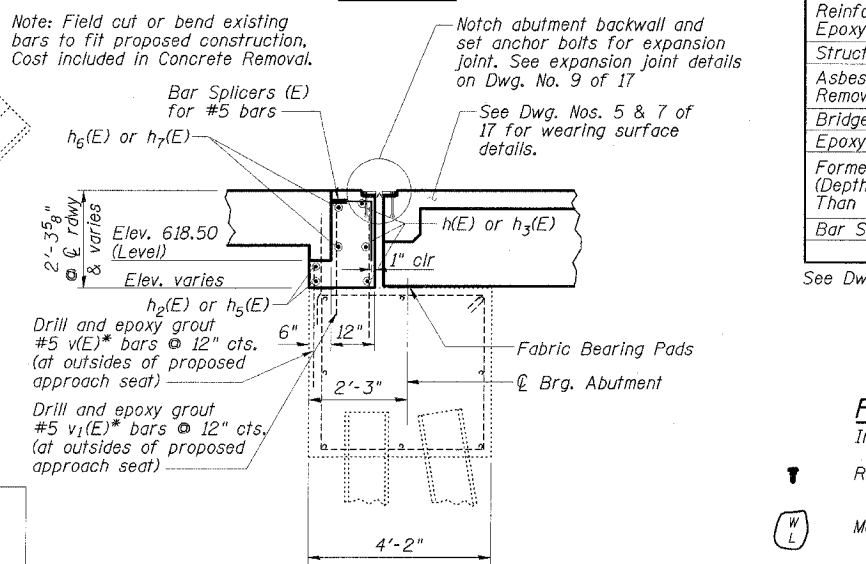
NOTE: ABUTMENT CRACK REPAIR LENGTHS AND FORMED CONCRETE REPAIR AREAS ARE ESTIMATED FROM 3-31-05 SURVEY WORK. ACTUAL LOCATIONS AND QUANTITIES OF REPAIRS SHALL BE SHOWN BY THE ENGINEER ON THE AS-BUILT PLANS FOR THIS SECTION.

ESCA
CONSULTANTS, INC.

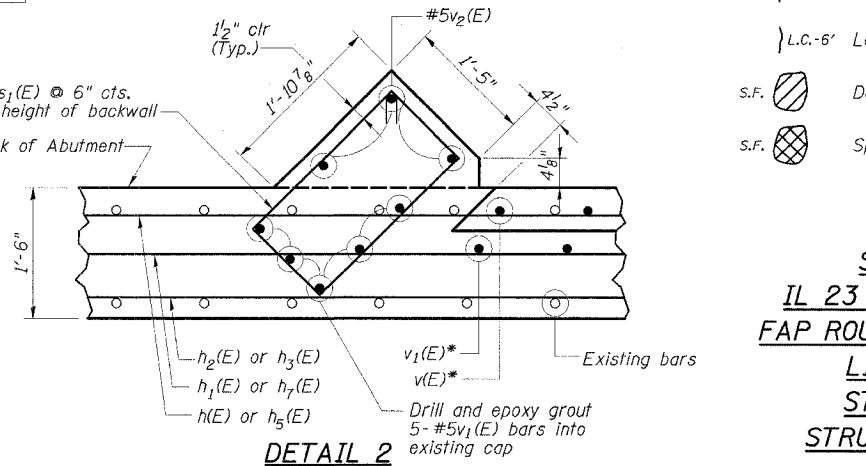
DESIGNED BY:	ELH	8/05
DRAWN BY:	DWH	8/05
CHECKED BY:	ELH	12/05
APPROVED BY:	RDP	12/05



SECTION B-B
EXISTING



SECTION A-A
PROPOSED



DETAIL 2

SOUTH ABUTMENT
BILL OF MATERIAL

Bar	No.	Size	Length	Shape
h(E)	3	#5	30'-9"	—
h ₂ (E)	2	#5	31'-11"	—
h ₃ (E)	3	#5	30'-5"	—
h ₅ (E)	2	#5	29'-3"	—
h ₆ (E)	2	#5	31'-5"	—
h ₇ (E)	2	#5	29'-9"	—
s (E)	5	#4	9'-6"	□
s ₁ (E)	5	#4	7'-6"	□
v (E)	12	#5	2'-3"	—
v ₁ (E)	23	#5	2'-10"	—
v ₂ (E)	5	#5	2'-0"	—
Concrete Removal		Cu. Yd.	5.9	
Concrete Structures		Cu. Yd.	7.0	
Reinforcement Bars, Epoxy Coated		Pound	610	
Structure Excavation		Cu. Yd.	8.8	
Asbestos Bearing Pad Removal		Each	24	
Bridge Seat Sealer		Sq. Ft.	15	
Epoxy Crack Sealing		Foot	25	
Formed Concrete Repair (Depth Equal to or Less Than 5")		Sq. Ft.	16.0	
Bar Splicers		Each	39	

See Dwg. No. 11 of 17 for bar bending details

REPAIR LEGEND

- Inspection Date: 3-31-05
- † Rust Stained Area
 - (W) Moisture Stained or Leached Area
 - {HL} Hairline Crack - Not to be Sealed
 - {c-6'} Crack (> 1/16" Width)
 - {L.C.-6'} Leached Crack (> 1/16" Width)
 - S.F. Delaminated Area
 - S.F. Spalled Area (Depth ≤ 5")
- EPOXY CRACK SEALING
- FORMED CONC. REPAIR

SOUTH ABUTMENT
IL 23 OVER PRAIRIE CREEK
FAP ROUTE 68 - SECTION 101BR
LIVINGSTON COUNTY
STATION 280+55.00
STRUCTURE NO. 053-0153