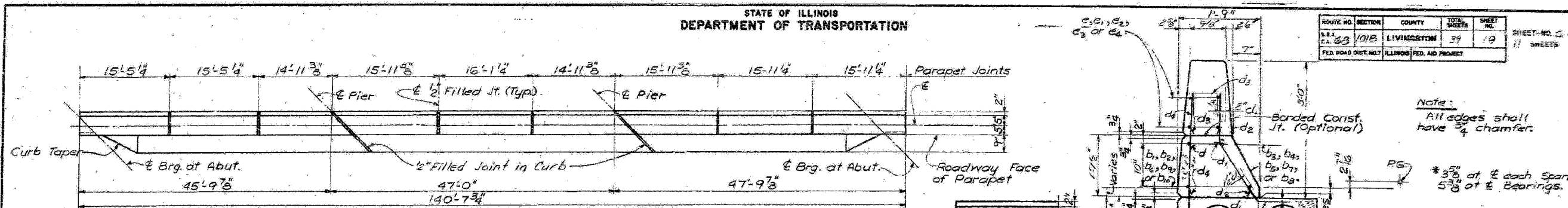


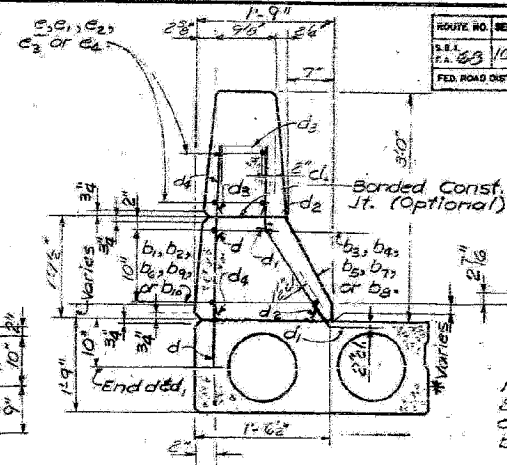
FAP RTE	SECTION	COUNTY	TOTAL SHEETS	SHEET NO.
68	101B	LIVINGSTON	47	37
STA.	TO STA.			
FED. ROAD DIST. NO.	ILLINOIS FED. AID PROJECT			

STATE OF ILLINOIS
DEPARTMENT OF TRANSPORTATION



PLAN - CURB AND PARAPET

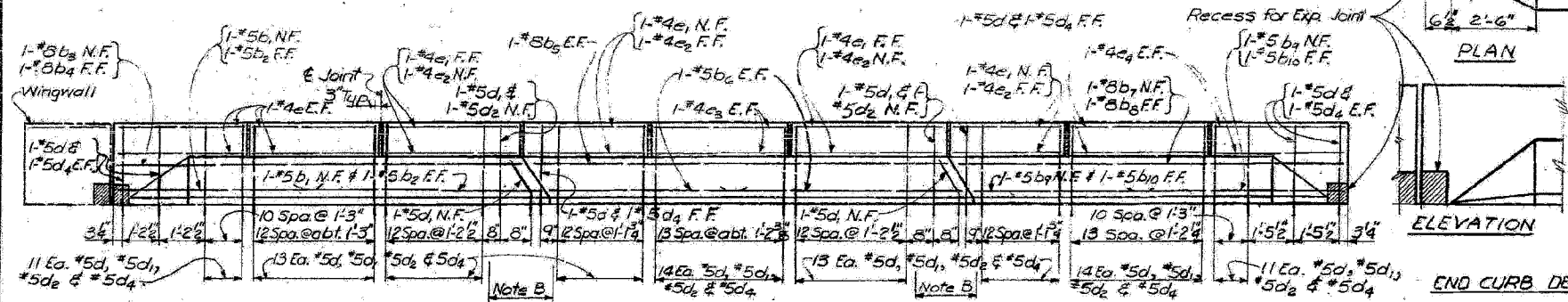
Note: E.F. indicates Each Face
N.F. indicates Near Face
F.F. indicates Far Face



SECTION THRU CURB

Note:
All edges shall have 1/4" chamfer.
* 5/8" at E each Span,
5/8" at E Bearings.

Note:
See Note A & detail of curb on sheet 3 if curb overhangs beam.

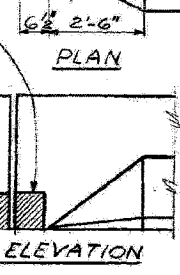


ELEVATION - CURB AND PARAPET

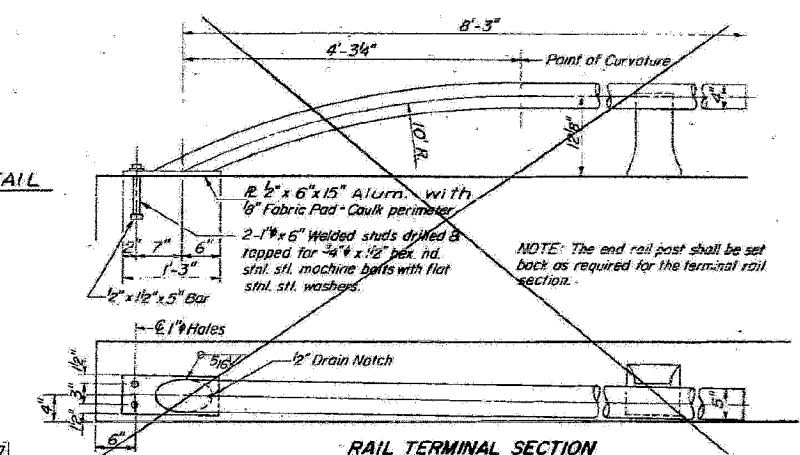
(Typical for each side of bridge.)

Note B: For additional details of bars d1 and d2 in these areas of curb, see sheet 5.

Note: Band b1 and b2 in field to conform to tapered section of curb.

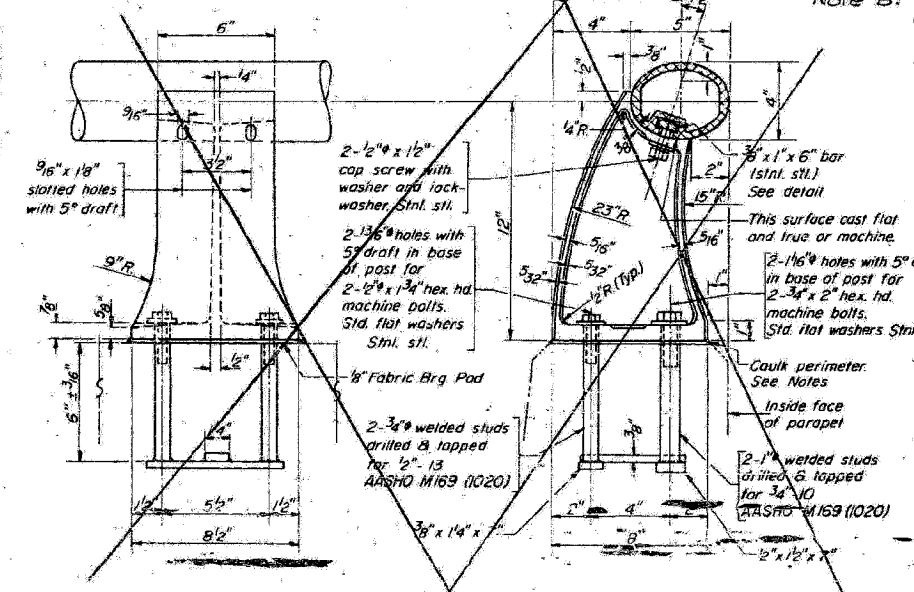


PARAPET JOINT DETAIL

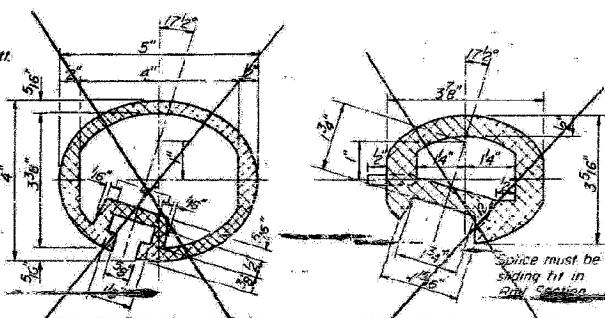


RAIL TERMINAL SECTION

Note: For billing of b-bars and d-bars, see Sheet 5.



RAIL POST DETAILS



SEC. THRU ELLIPTICAL RAIL SECTION

SEC. THRU SPLICE

Two component non-staining gray sealing compound with polysulfide liquid polymers - gun grade with primer.

1/2" Preformed Cork Joint Filler (In accordance with Articles 715.07 or 715.08) Cast incidental.

NOTES:
All Aluminum Alloy Extruded Rail shall be in modular lengths of 30 feet, except at the end of bridge or over open joints in bridge deck where the rail shall be attached to a minimum of 2 posts. If the rail is on a horizontal curve of 2300 foot radius or less, the modular lengths may be reduced but shall be attached to a minimum of 2 posts.
All joints in rail shall be spliced per detail.
Provide 1-8" and 2-16" Aluminum Shim for 25% of the Posts. Rail element shall be parallel to Grade - high spots shall be ground and low spots shimmed.
Seal perimeter of base of post to parapet with two component non-staining gray sealing compound with polysulfide liquid polymers, gun grade with primer. Fabric Bearing Pad shall have same dimensions as base of post.
Aluminum alloy rail shall conform to ASTM B 221 Alloy 6061-T6 or 6351-T5 with min yield 35 ksi, min tensile 38 ksi, and elongation of 10% in 2 inches.

BILL OF MATERIAL

Bar	No.	Size	Length	Shape
#	16	#4	15'-1"	
#	16	#4	13'-5"	
#	16	#4	14'-4"	
#	8	#4	15'-9"	
#	16	#4	15'-7"	
Neoprene Expansion Joint	2	(2' x 2' x 1/2")	127	
Reinforcement Bars	Lbs		4500	
Class X Concrete	Cu. Yds.		31.1	

Note: For details of Neoprene Expansion Jt. see Sheet 11.

PARAPETS, CURBS AND RAILS
FA. ROUTE 68 (ILL. 23) OVER
PRAIRIE CREEK
FA. RT. 68 SEC. 101 B
LIVINGSTON COUNTY
STATION 280+55

DESIGNED J. Liebsch
CHECKED D. Beardstew
DRAWN R. Pettitt
CHECKED T. Dillon