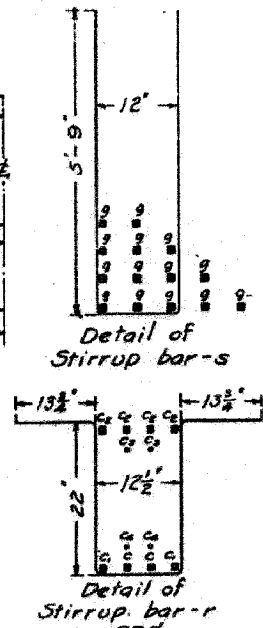
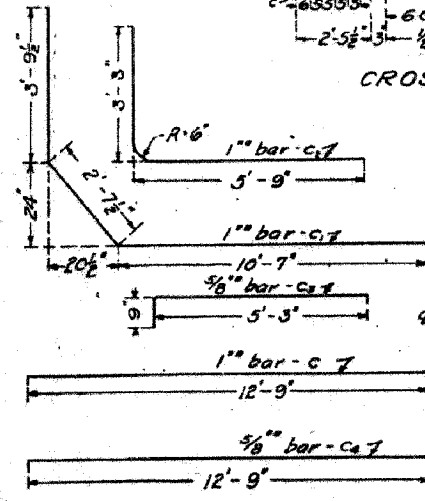
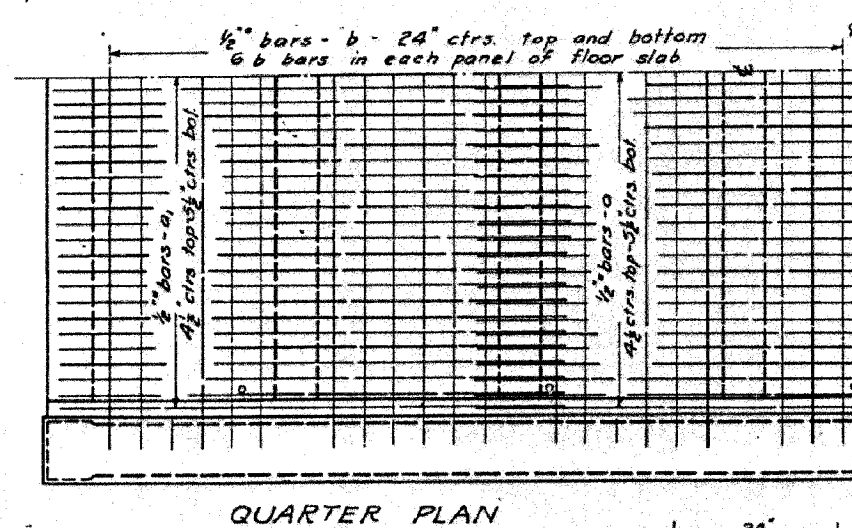
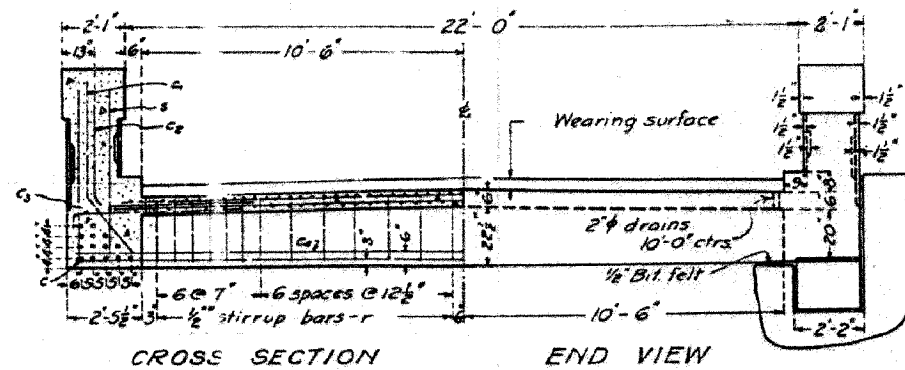
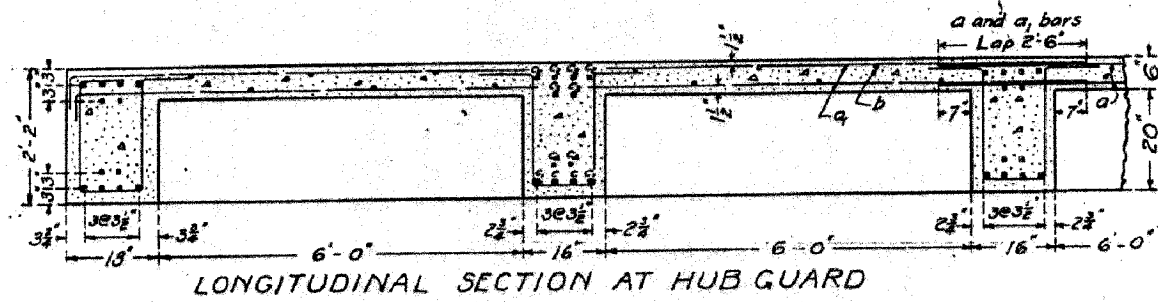
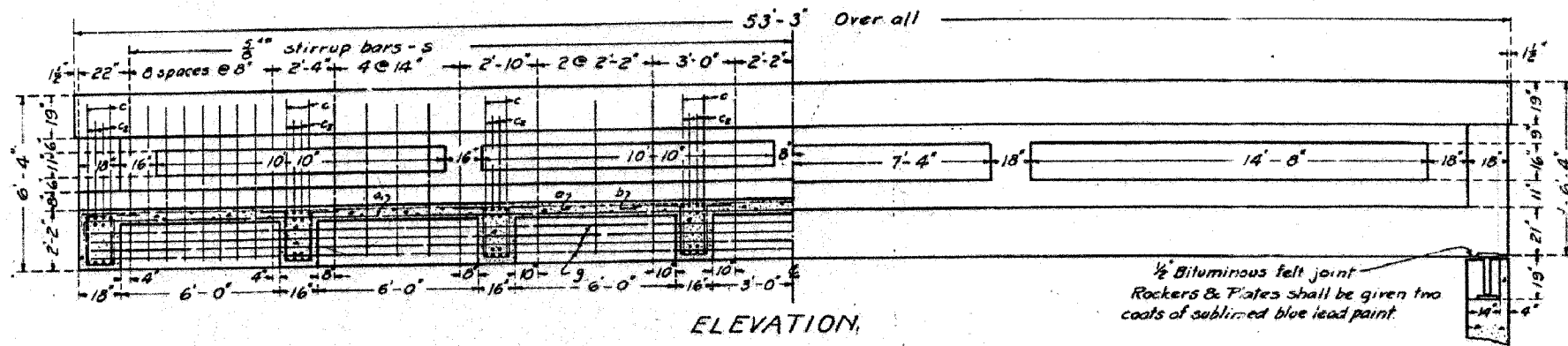


STATE OF ILLINOIS
DEPARTMENT OF PUBLIC WORKS & BUILDINGS
DIVISION OF HIGHWAYS

SHEET NO.
SHEETS

F.A.S. RTE.	SECTION	COUNTY	TOTAL SHEETS	SHEET NO.
840	136 BR-1	IROQUOIS	45	20
STA.	TO STA.			
FED. ROAD DIST. NO.	ILLINOIS	FED. AID PROJECT		



BILL OF MATERIAL

Bars	No	Size	Length
a	107	1/2"	24'-6"
a	214	1/2"	17'-6"
b	22	1/2"	24'-0"
c	16	1"	25'-6"
c	16	1"	34'-0"
c ₂	64	1"	9'-0"
c ₃	32	3/8"	6'-0"
c ₄	16	3/8"	23'-6"
s	74	3/8"	12'-6"
r	28	1/2"	52'-6"
r	208	1/2"	7'-0"

Reinforcing Steel - Lbs. 22540
Concrete - Cu. Yds. 87.4
C.I. Rockers - Lbs. 1036
Steel Plates - Lbs. 218

Class 'A' Concrete to be used throughout. Proportions 1:2 1/2:4

COMPUTED	L. A. Wilson	EXAMINED	
CHECKED	C. T. MacAllister	PASSED	BRIDGE ENGINEER
DRAWN	L. A. W.	APPROVED	ENGINEER OF DESIGN
CHECKED	C. T. M.	APPROVED	CHIEF HIGHWAY ENGINEER
SPECIAL			
CHECKED			

REVISIONS

NAME	DATE

ILLINOIS DEPARTMENT OF TRANSPORTATION

EXISTING BRIDGE PLANS

FAP RTE 840 (IL RTE 49)
SECTION 136 BR-1
IROQUOIS COUNTY

SCALE: VERT. _____
HORIZ. _____
DATE: 12/7/05

DRAWN BY: LANDREY
CHECKED BY: BOTT

GREENE & BRADFORD, INC.
OF SPRINGFIELD

COMPUTER FILE NO.
03236.W012.EPLN
PROJECT 03236 W012
12/7/05 - MML

FOR INFORMATION ONLY

DATE: 12/21/2005
FILE NAME: J:\03236\03236.W012.EPLN.dgn
PLOT SCALE: 5/8"=1'-0"
REFERENCE: REF.
DRAFTER: MICHAEL

986

as shown Revised May 1, 1968 J.R.G.