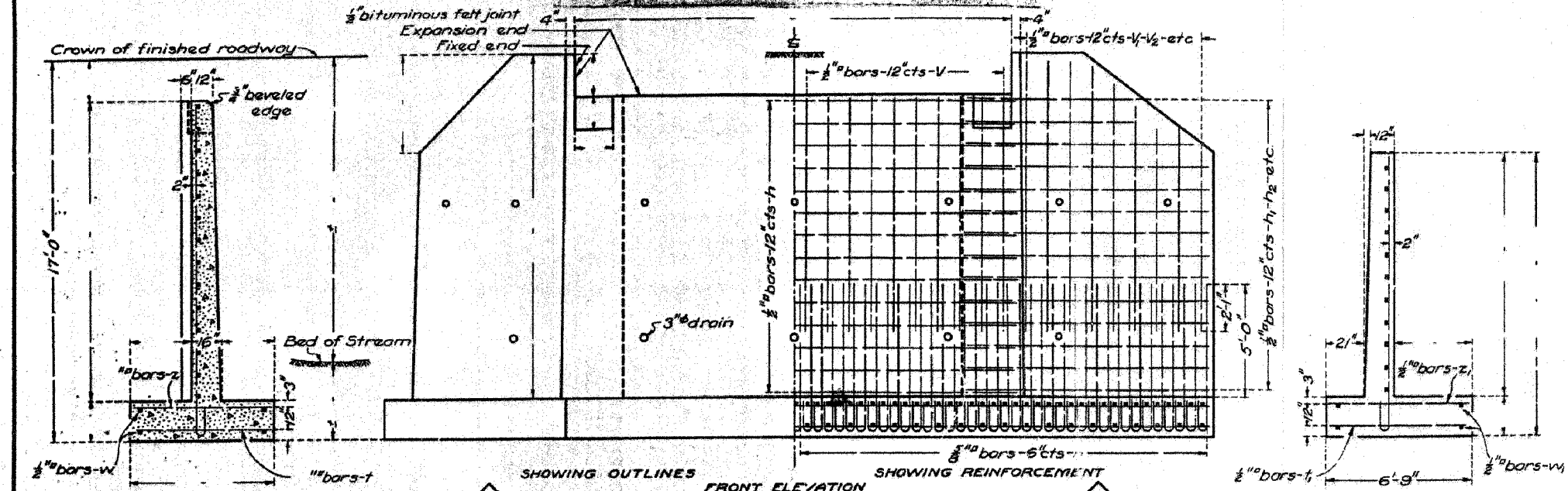


F.A.S. RTE.	SECTION	COUNTY	TOTAL SHEETS	SHEET NO.
840	136 BR-1	IROQUOIS	45	21
STA.		TO STA.		
FED. ROAD DIST. NO.		ILLINOIS FED. AID PROJECT		

STATE OF ILLINOIS  
DEPARTMENT OF PUBLIC WORKS & BUILDINGS  
DIVISION OF HIGHWAYS  
**R.C. ABUTMENTS FOR GIRDER BRIDGE**  
HEIGHT OVER ALL 17 FEET

Sheet No  
sheets



SECTION OF ABUTMENT

SHOWING OUTLINES FRONT ELEVATION SHOWING REINFORCEMENT

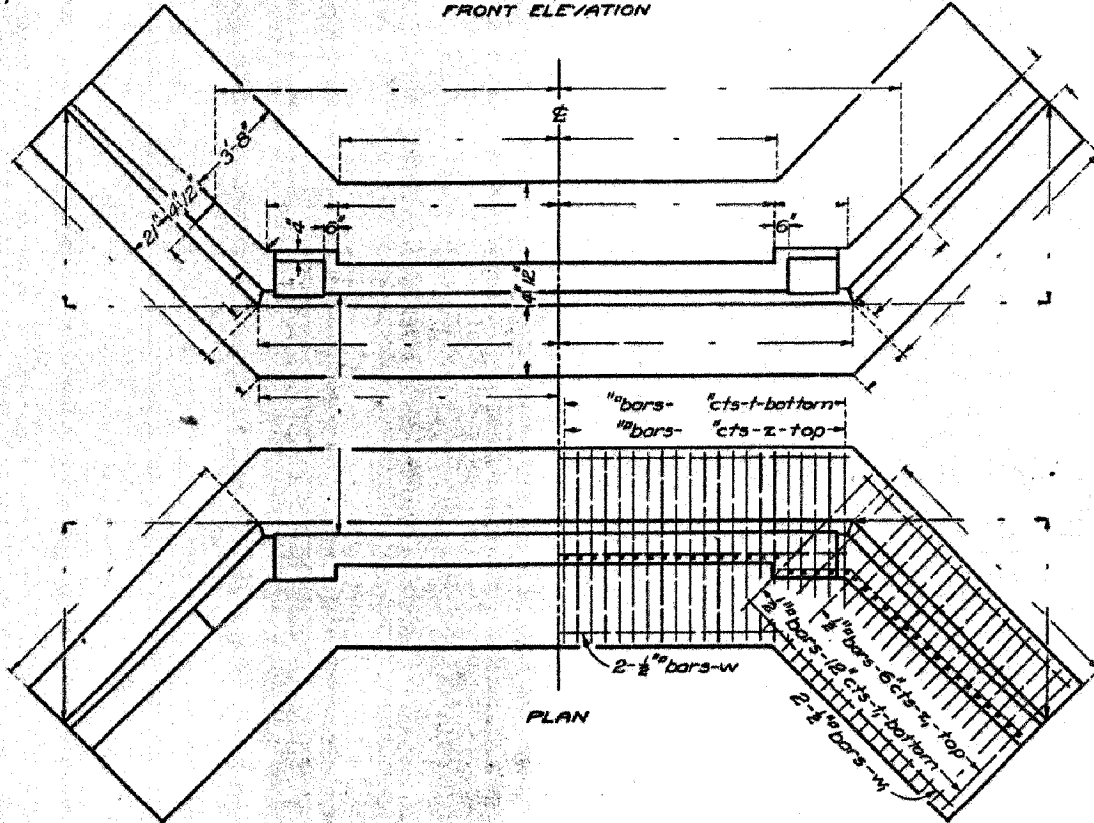
END OF WING

BILL OF MATERIAL

Bars	No.	Size	Length
V		1/2" #	
V		1/2" #	
V <sub>2</sub>		1/2" #	
V <sub>3</sub>		1/2" #	
V <sub>4</sub>		1/2" #	
V <sub>5</sub>		1/2" #	
h		1/2" #	
h <sub>2</sub>		1/2" #	
h <sub>3</sub>		1/2" #	
h <sub>4</sub>		1/2" #	
n		3/8" #	7'-6"
t		1/2" #	6'-6"
z		1/2" #	6'-6"
z <sub>1</sub>		1/2" #	6'-6"
w		1/2" #	
w <sub>1</sub>		1/2" #	

Reinforcing Steel-Lb.  
Concrete-Class A-CuYd.

Class A concrete shall be used throughout. Proportions 1:2 1/2:4.  
All reinforcing steel shall be securely wired in place before concrete is poured.



PLAN

COMPUTED -	<i>[Signature]</i>
CHECKED -	<i>E. Floyd Bell</i>
DRAWN -	<i>[Signature]</i>
CHECKED -	<i>[Signature]</i>
ASSEMBLED -	
CHECKED -	
DESIGNED -	
PASSED -	
APPROVED -	

1072

**FOR INFORMATION ONLY**

PLOT DATE = 12/21/2005  
FILE NAME = J:\03236\w012\ep\w012.epl\w012.dgn  
PLOT SCALE = 50.00000000 1/16"  
REFERENCE = .REF.  
OPERATOR = michelle

REVISIONS	
NAME	DATE

ILLINOIS DEPARTMENT OF TRANSPORTATION  
**EXISTING BRIDGE PLANS**  
FAP RTE 840 (IL RTE 49)  
SECTION 136 BR-1  
IROQUOIS COUNTY

SCALE: VERT. \_\_\_\_\_  
          HORIZ. \_\_\_\_\_  
DATE: 12/7/05

DRAWN BY: *SOMBERG*  
CHECKED BY: *BOTT*

COMPUTER FILE NO.  
03236.W012.EPLN  
PROJECT 03236 W012  
12/7/05 - MML

GREENE & BRADFORD, INC.  
OF SPRINGFIELD  
REGISTERED PROFESSIONAL ENGINEERS  
REGISTERED PROFESSIONAL ARCHITECTS  
REGISTERED PROFESSIONAL SURVEYORS  
REGISTERED PROFESSIONAL LAND SURVEYORS  
REGISTERED PROFESSIONAL CIVIL ENGINEERS  
REGISTERED PROFESSIONAL ELECTRICAL ENGINEERS  
REGISTERED PROFESSIONAL MECHANICAL ENGINEERS  
REGISTERED PROFESSIONAL CHEMICAL ENGINEERS  
REGISTERED PROFESSIONAL INDUSTRIAL ENGINEERS  
REGISTERED PROFESSIONAL AERONAUTICAL ENGINEERS  
REGISTERED PROFESSIONAL METALLURGICAL ENGINEERS  
REGISTERED PROFESSIONAL NUCLEAR ENGINEERS  
REGISTERED PROFESSIONAL PETROLEUM ENGINEERS  
REGISTERED PROFESSIONAL AGRICULTURAL ENGINEERS  
REGISTERED PROFESSIONAL FORESTRY ENGINEERS  
REGISTERED PROFESSIONAL MINING ENGINEERS  
REGISTERED PROFESSIONAL CIVIL ENGINEERS  
REGISTERED PROFESSIONAL ELECTRICAL ENGINEERS  
REGISTERED PROFESSIONAL MECHANICAL ENGINEERS  
REGISTERED PROFESSIONAL CHEMICAL ENGINEERS  
REGISTERED PROFESSIONAL INDUSTRIAL ENGINEERS  
REGISTERED PROFESSIONAL AERONAUTICAL ENGINEERS  
REGISTERED PROFESSIONAL METALLURGICAL ENGINEERS  
REGISTERED PROFESSIONAL NUCLEAR ENGINEERS  
REGISTERED PROFESSIONAL PETROLEUM ENGINEERS  
REGISTERED PROFESSIONAL AGRICULTURAL ENGINEERS  
REGISTERED PROFESSIONAL FORESTRY ENGINEERS  
REGISTERED PROFESSIONAL MINING ENGINEERS