

F.A.S. RTE.	SECTION	COUNTY	TOTAL SHEETS	SHEET NO.
840	136 BR-1	IROQUOIS	45	24
STA.		TO STA.		
FED. ROAD DIST. NO.		ILLINOIS	FED. AID PROJECT	

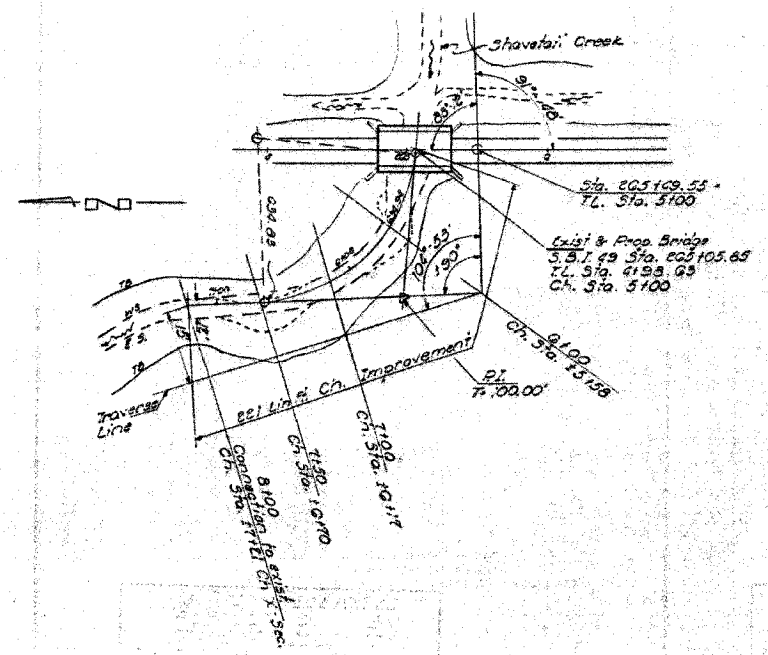
STATE OF ILLINOIS
DEPARTMENT OF PUBLIC WORKS & BUILDINGS
DIVISION OF HIGHWAYS

PROJECT NO.	SECTION	COUNTY	TOTAL SHEETS	SHEET NO.
840	136 BR-1	IROQUOIS	45	24
STA.		TO STA.		
FED. ROAD DIST. NO.		ILLINOIS	FED. AID PROJECT	

WATERWAY INFORMATION
 Drainage Area 3934 Acres
 Character level cultivated
 Required Opening (50 yr Flood) 512 Sq. Ft.
 Present Opening 533 Sq. Ft.
 Proposed Opening 512 Sq. Ft.
 Low Water Elev 635.5
 Q₁₀₀ = 190 cfs

STATION 265+05.65
 REBUILT BY
 STATE OF ILLINOIS
 S.B.I. RT. 49 SEC. 136 BR
 LOADING HS. 20

NAME PLATE
 See Sld 2113-1



CHANNEL IMPROVEMENT



TYPICAL CROSS SECTION CHANNEL IMPROVEMENT

WATERWAY INFORMATION
 S.B.I. RT. 49 SEC. 136 BR
 IROQUOIS COUNTY
 STA. 265+05.65

DESIGNED	John Scheller	EXAMINED	May 01 1971
CHECKED	Tommy Kane	PASSED	
DRAWN	J. SCHNELLER	APPROVED	
CHECKED	JT		

FOR INFORMATION ONLY

PLOT DATE = 12/21/2005
 FILE NAME = I:\03236\03236\03236_012.EPLN.dgn
 PLOT SCALE = 50.000000 / 1 IN.
 REFERENCE = .REF.
 OPERATOR = mch1161

REVISIONS	
NAME	DATE

ILLINOIS DEPARTMENT OF TRANSPORTATION
EXISTING BRIDGE PLANS
 FAP RTE 840 (IL RTE 49)
 SECTION 136 BR-1
 IROQUOIS COUNTY

SCALE: VERT. _____
 HORIZ. _____
 DATE: 12/7/05

DRAWN BY: LANDREY
 CHECKED BY: BOIT

GREENE & BRADFORD, INC.
 OF SPRINGFIELD

COMPUTER FILE NO.
 03236_W012_EPLN
 PROJECT 03236 W012
 12/7/05 - MML