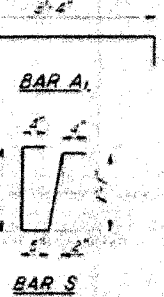
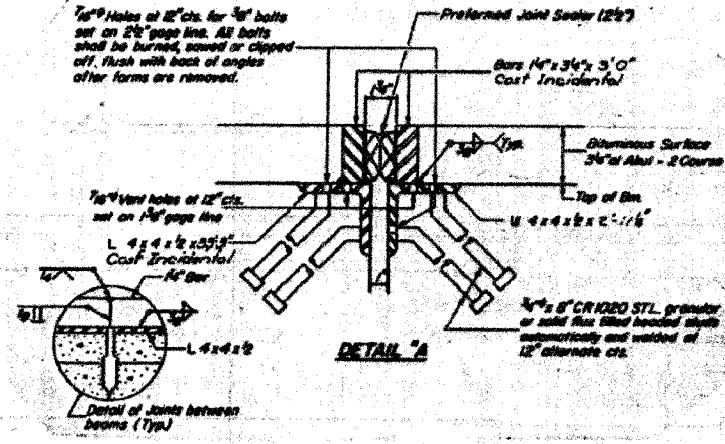
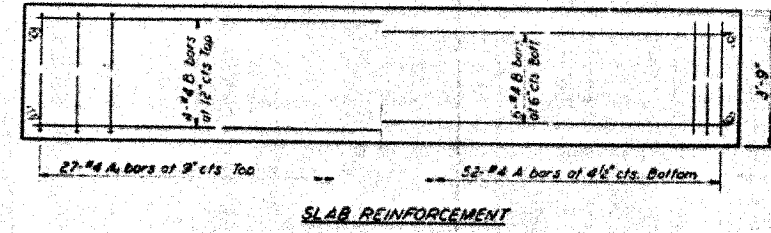
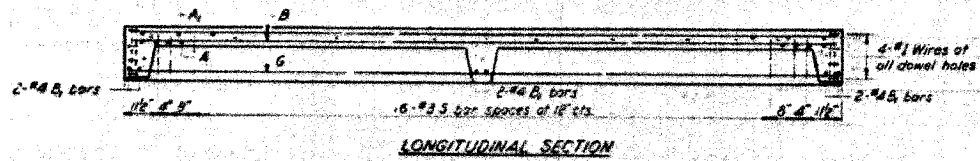
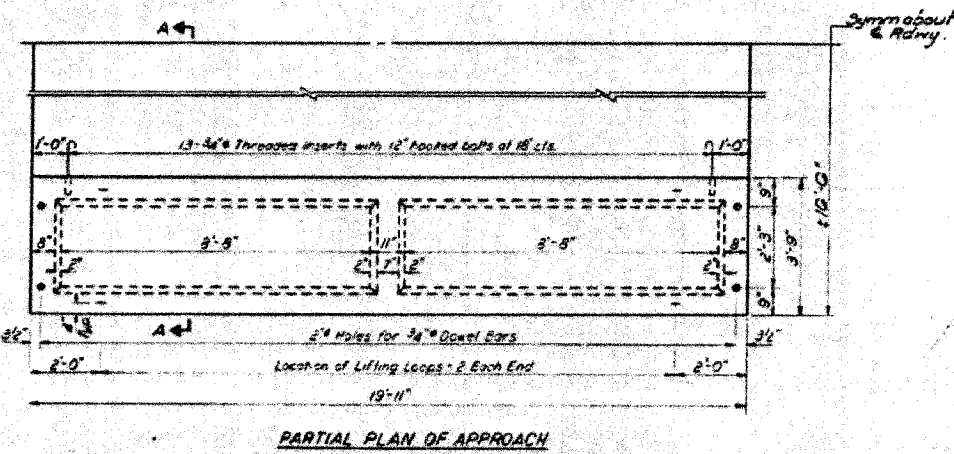
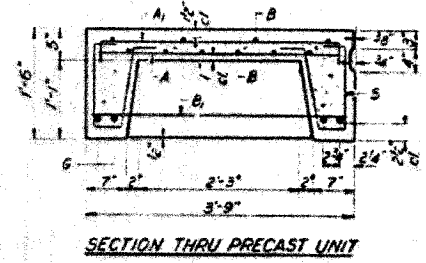
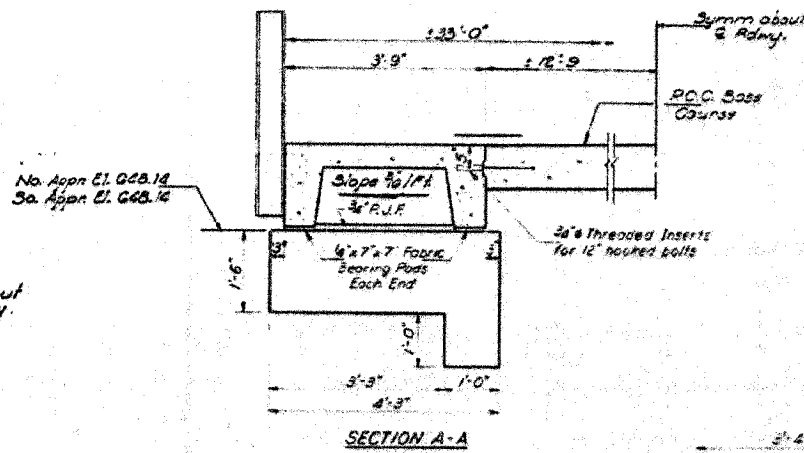
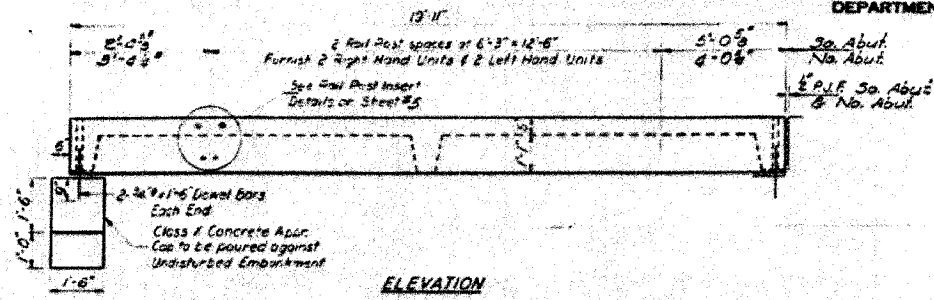


F.A.S. RTE.	SECTION	COUNTY	TOTAL SHEETS	SHEET NO.
840	136 BR-1	IROQUOIS	45	25
STA.		TO STA.		
FED. ROAD DIST. NO.		ILLINOIS FED. AID PROJECT		

SHEET NO. 3	
7 SHEETS	

STATE OF ILLINOIS
DEPARTMENT OF PUBLIC WORKS & BUILDINGS
DIVISION OF HIGHWAYS



BAR LIST - ONE UNIT

Reinforcement to be cast into slab

Bar	No	Size	Length	Shape
A	52	#4	3'-3"	
A1	27	#4	4'-0"	
B	10	#4	19'-6"	
B1	6	#4	3'-6"	
G	2	#10	19'-6"	
S	42	#3	3'-4"	

NOTES

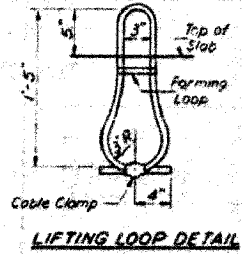
Unless otherwise approved by the Engineer, lifting loops shall be 2", 6x19 class wire rope with fiber core and shall have a minimum ultimate strength of 18,700 lbs. Loops shall be turned off after slab has been erected. Holes shall be drilled and anchor bolts grouted in place.

Cost of reinforcement and accessories cast into the slab unit, bearing pods, furnishes, drilling for, placing and grouting anchor details and 3/4" hooked bolts is included in Unit bid price for "Precast Concrete Bridge Slab."

The Precast Concrete Bridge Slab shall be erected and aligned with the exterior face of the exterior Deck Beam after Deck Beams are in final position.

BILL OF MATERIAL

Item	Unit	Quantity
Precast Concrete Bridge Slab	Sq. Ft.	299
R.O.C. Base Course 10 1/2" x 10 1/2" x 10 1/2"	Sq. Yds.	113
Pavement Removal	Sq. Yds.	80
Class X Concrete	Cu. Yds.	1.6



STRESSES

f_c = 4,500 psi
f_c = 1,800 psi
f_s = 20,000 psi
n = 8

LOADING HS-20

APPROACH DETAILS

567 R.T.S. 310 100 80 8

370000'S COUNTY

3714 10-1105-05

DESIGNED	J. L. Armstrong	EXAMINED	May 19 1971
CHECKED	J. L. Armstrong	DRAWN	J. L. Armstrong
CHECKED	J. L. Armstrong	APPROVED	

AP-1 20 Precast Apron Unit (R.F.L.)

PLOT DATE = 12/21/2005
FILE NAME = J:\03236\03236_012.EPLN.dwg
PLOT SCALE = 50.0000000 / IN.
REFERENCE = REF-1
OPERATOR = michael.t

FOR INFORMATION ONLY

REVISIONS	
NAME	DATE

ILLINOIS DEPARTMENT OF TRANSPORTATION

EXISTING BRIDGE PLANS

FAP RTE 840 (IL RTE 49)
SECTION 136 BR-1
IROQUOIS COUNTY

SCALE: VERT. DATE: 12/7/05
HORIZ. DATE: 12/7/05

DRAWN BY: LANDREY
CHECKED BY: BOIT

GREENE & BRADFORD, INC.
OF SPRINGFIELD

COMPUTER FILE NO. 03236_W012.EPLN
PROJECT 03236 W012
12/7/05 - MML