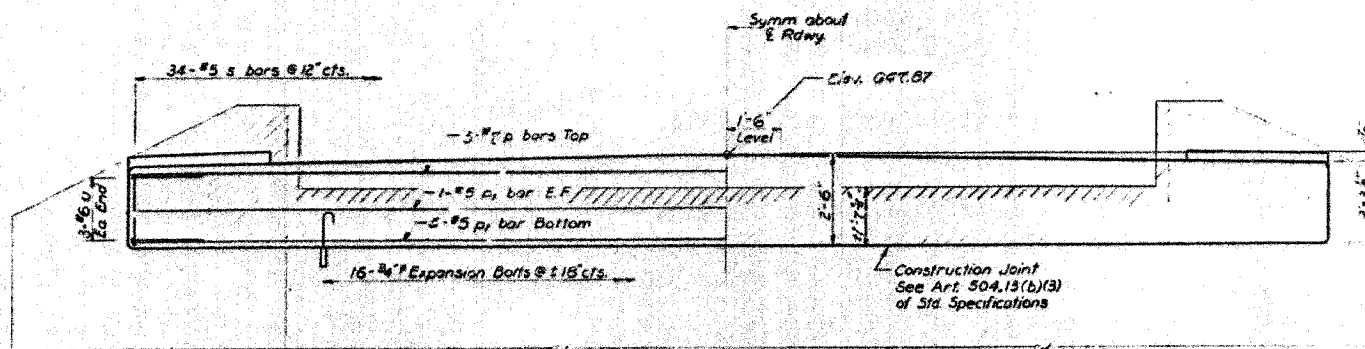


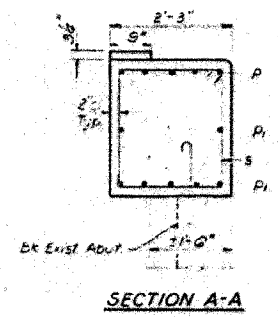
F.A.S. RTE.	SECTION	COUNTY	TOTAL SHEETS	SHEET NO.
840	136 BR-1	IROQUOIS	45	29
STA.		TO STA.		
FED. ROAD DIST. NO.		ILLINOIS FED. AID PROJECT		

STATE OF ILLINOIS  
DEPARTMENT OF PUBLIC WORKS & BUILDINGS  
DIVISION OF HIGHWAYS

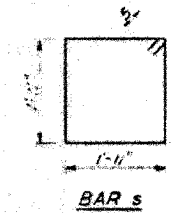
DATE	BY	SCALE	NO.
11/20/05	JL	1/8" = 1'-0"	15
SHEET NO. 7			
7 SHEETS			



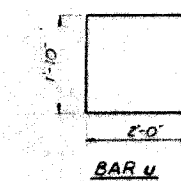
ELEVATION



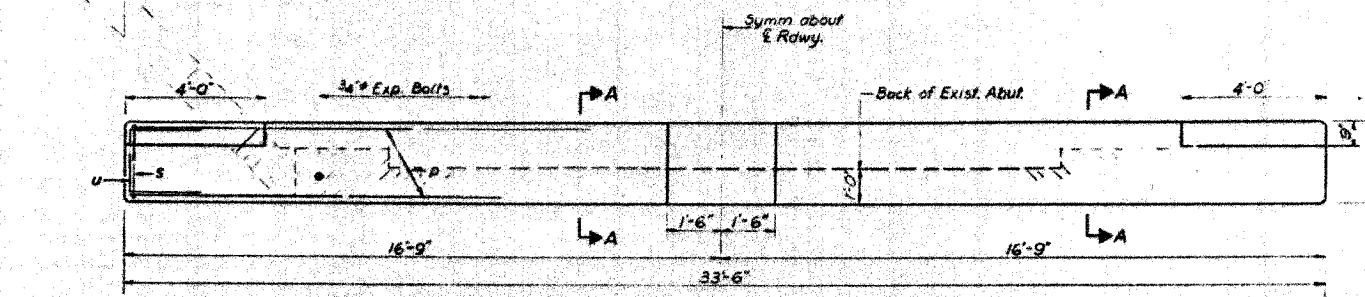
SECTION A-A



BAR S



BAR U



PLAN

BILL OF MATERIAL

Bar	No.	Size	Length	Shape
P	5	#7	33'-3"	—
P1	7	#5	33'-8"	—
S	36	#5	8'-0"	□
U	6	#6	5'-10"	□
Class X Concrete		Cu Yds.	6.7	
Reinforcement Bars		Lbs	960	
Expansion Bolts		Each	10	
Concrete Removal		Cu Yds	3	

DESIGNED	<i>J. L. Armstrong</i>	EXAMINED	<i>[Signature]</i>
CHECKED	<i>[Signature]</i>	PASSED	<i>[Signature]</i>
DRAWN	<i>J. L. Armstrong</i>	APPROVED	<i>[Signature]</i>
CHECKED	<i>[Signature]</i>		

NOTE  
Hatched area indicates Concrete Removal. Reinforcement extending into removed area shall be cleared and incorporated into the new construction.  
Expansion bolts shall be anchored in sound concrete. All edges shall have standard 3/4" chamfers except as noted.

**SOUTH ADJUSTMENT**  
**5.5' AT 49' SEC 36.0.9**  
**IROQUOIS COUNTY**  
**STA. 66+05.05**

**FOR INFORMATION ONLY**

REVISIONS	
NAME	DATE

ILLINOIS DEPARTMENT OF TRANSPORTATION  
**EXISTING BRIDGE PLANS**  
FAP RTE 840 (IL RTE 49)  
SECTION 136 BR-1  
IROQUOIS COUNTY

SCALE: VERT. \_\_\_\_\_  
HORIZ. \_\_\_\_\_  
DATE: 12/7/05

CHANGED BY: LANDREY  
CHECKED BY: BOTT

COMPUTER FILE NO.  
03236\_W012\_EPLN

PROJECT 03236 W012  
12/7/05 - MML

GREENE & BRADFORD, INC.  
OF SPRINGFIELD  
CONSULTING ENGINEERS  
INCORPORATED  
1000 N. WASHINGTON ST., SUITE 100  
SPRINGFIELD, ILLINOIS 62760  
PHONE: (217) 223-1111 FAX: (217) 223-1112  
WWW.GRENE-AND-BRADFORD.COM

PLOT DATE = 12/21/2005  
FILE NAME = J:\03236\w012\br-1\br-1.dwg  
PLOT SCALE = 1/8" = 1'-0"  
PLOT SIZE = 11x17  
OPERATOR = mchallie