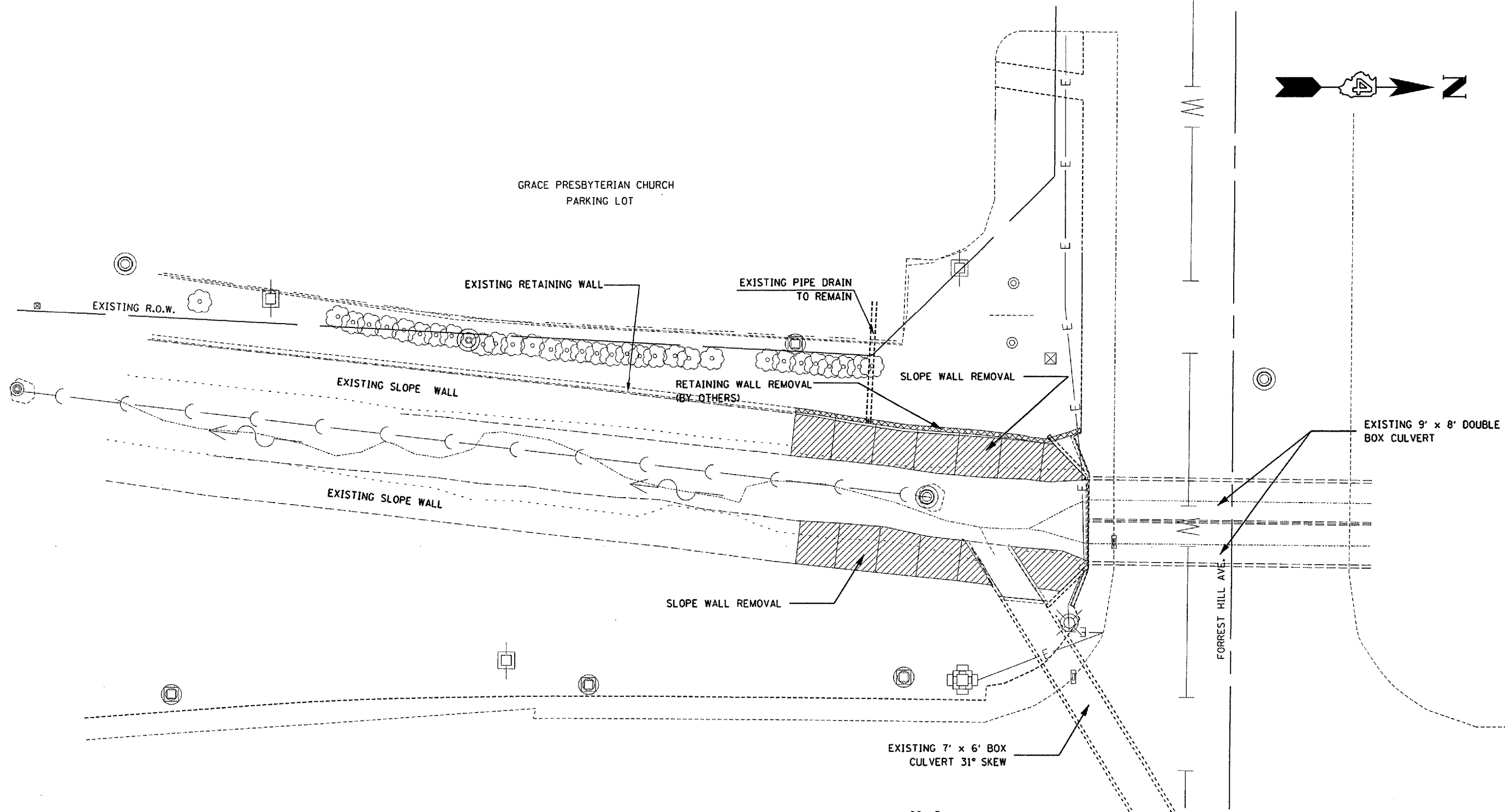
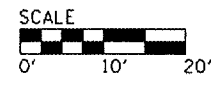


F.A.P. RTE.	SECTION	COUNTY	TOTAL SHEETS	SHEET NO.
646		PEORIA	30	7
STA.	TO STA.			
FED. ROAD DIST. NO.	ILLINOIS	FED. AID PROJECT		
• D4 SLOPE REPAIR 2006				



268+50 268+00 267+50 267+00 266+50

IL 40 (KNOXVILLE AVE.)



REVISIONS	
NAME	DATE

ILLINOIS DEPARTMENT OF TRANSPORTATION

EXISTING PLAN & REMOVALS

SCALE: DRAWN BY
DATE CHECKED BY

PLOT DATE = 12/1/2005
 FILE NAME = c:\projects\140fhill\plotsheet3.dgn
 PLOT SCALE = 23.2941' / IN.
 USER NAME = crespole