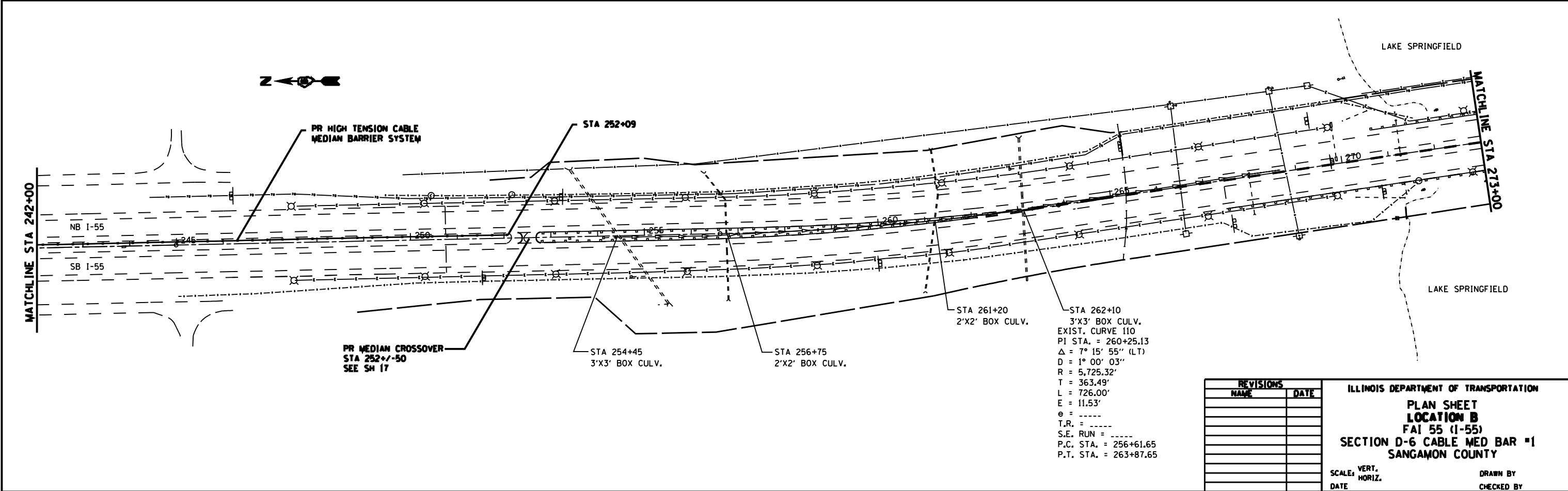
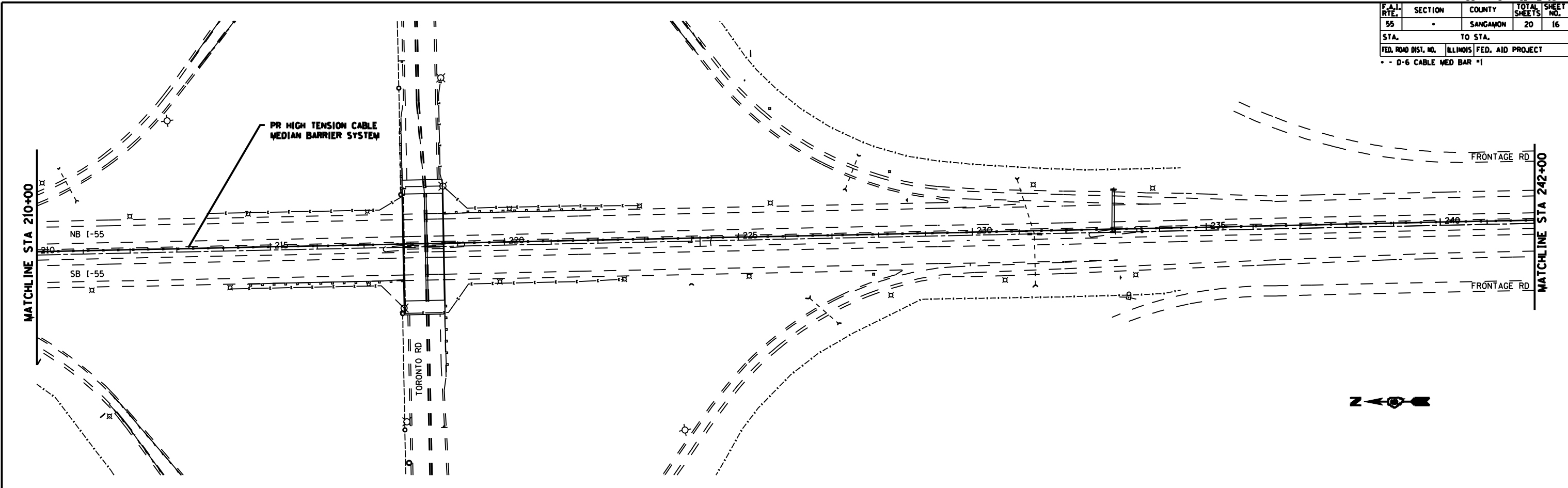


CONTRACT NO. 72A10				
F.A.I. RTE.	SECTION	COUNTY	TOTAL SHEETS	SHEET NO.
55		SANGAMON	20	16
STA.		TO STA.		
FED. ROAD DIST. NO.	ILLINOIS	FED. AID PROJECT		
* - D-6 CABLE MED BAR #1				



PR MEDIAN CROSSOVER
STA 252+/-50
SEE SH 17

STA 254+45
3'X3' BOX CULV.

STA 256+75
2'X2' BOX CULV.

STA 261+20
2'X2' BOX CULV.

STA 262+10
3'X3' BOX CULV.
EXIST. CURVE 110
PI STA. = 260+25.13
 $\Delta = 7^\circ 15' 55''$ (LT)
D = 1° 00' 03"
R = 5,725.32'
T = 363.49'
L = 726.00'
E = 11.53'
e = ----
T.R. = ----
S.E. RUN = ----
P.C. STA. = 256+61.65
P.T. STA. = 263+87.65

REVISIONS	
NAME	DATE

ILLINOIS DEPARTMENT OF TRANSPORTATION
**PLAN SHEET
LOCATION B**
FAI 55 (I-55)
SECTION D-6 CABLE MED BAR #1
SANGAMON COUNTY

SCALE: VERT. _____
HORIZ. _____

DATE _____ DRAWN BY _____
CHECKED BY _____

PLOT DATE: 12/02/2009
FILE NAME: c:\p\projects\4825282\barrier\barrier.dwg
PLOT SCALE: 21/7847 / IN.
USER NAME: fough101