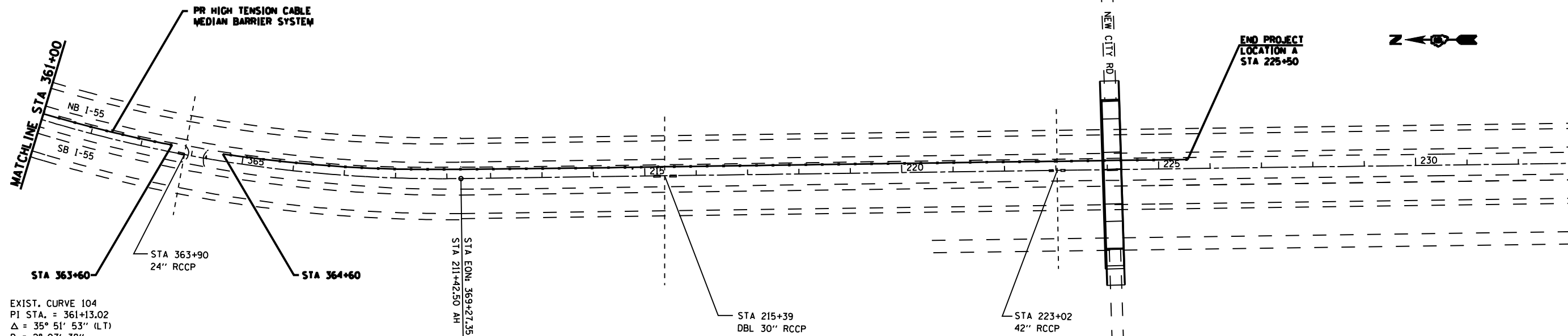
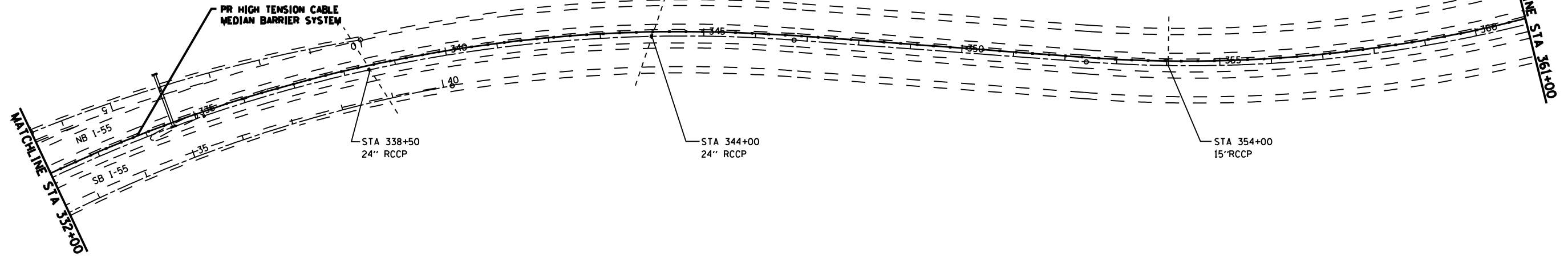


F.A.I. RTE.	SECTION	COUNTY	TOTAL SHEETS	SHEET NO.
55		SANGAMON	20	18
STA.		TO STA.		
FED. ROAD DIST. NO.		ILLINOIS FED. AID PROJECT		

\* - D-6 CABLE MED BAR #1

EXIST. CURVE 103  
 PI STA. = 335+77.05  
 $\Delta = 46^\circ 37' 10''$  (RT)  
 $D = 1^\circ 59' 52''$   
 $R = 2,867.97'$   
 $T = 1,235.72'$   
 $L = 2,333.56'$   
 $E = 254.89'$   
 $e = \text{-----}$   
 $T.R. = \text{-----}$   
 $S.E. RUN = \text{-----}$   
 P.C. STA. = 323+41.33  
 P.T. STA. = 346+74.89



EXIST. CURVE 104  
 PI STA. = 361+13.02  
 $\Delta = 35^\circ 51' 53''$  (LT)  
 $D = 2^\circ 07' 38''$   
 $R = 2,693.39'$   
 $T = 871.62'$   
 $L = 1,685.95'$   
 $E = 137.52'$   
 $e = \text{-----}$   
 $T.R. = \text{-----}$   
 $S.E. RUN = \text{-----}$   
 P.C. STA. = 352+41.39  
 P.T. STA. = 369+27.35

PLOT DATE = 12/02/2009  
 FILE NAME = c:\projects\4825282\barrier\barrier.dwg  
 PLOT SCALE = 211.7847 IN.  
 USER NAME = faugh1@i

REVISIONS	
NAME	DATE

ILLINOIS DEPARTMENT OF TRANSPORTATION  
**PLAN SHEET**  
**LOCATION B**  
 FAI 55 (I-55)  
 SECTION D-6 CABLE MED BAR #1  
 SANGAMON COUNTY

SCALE: VERT. \_\_\_\_\_  
 HORIZ. \_\_\_\_\_  
 DATE \_\_\_\_\_

DRAWN BY \_\_\_\_\_  
 CHECKED BY \_\_\_\_\_