

76863

F.A.P. RTE.	SECTION	COUNTY	TOTAL SHEETS	SHEET NO.
817	106BR-1	WASHINGTON	23	1

STATE OF ILLINOIS
DEPARTMENT OF TRANSPORTATION
DIVISION OF HIGHWAYS

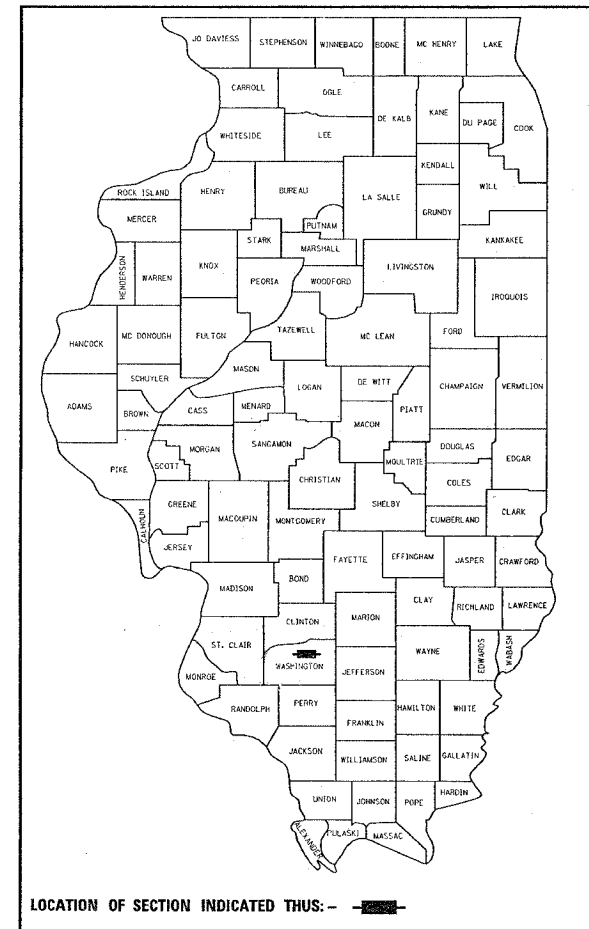
**PROPOSED
HIGHWAY PLANS**

FAP ROUTE 817 (IL 15)
SECTION 106BR-1
PROJECT: BHF-0817(005)
SUPERSTRUCTURE REPLACEMENT
OVER ELKHORN CREEK
WASHINGTON COUNTY

C-98-031-05

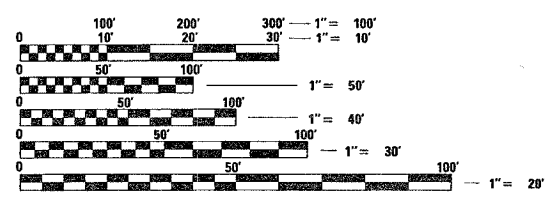
FOR INDEX OF SHEETS, SEE SHEET NO. 2

D-98-013-05



PROJECT ENGINEER: PATTI LEBEAU (618) 346-3179
SQUAD CONTACT: ART MUEHLFELD (618) 346-3209

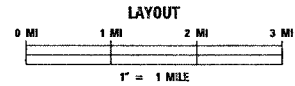
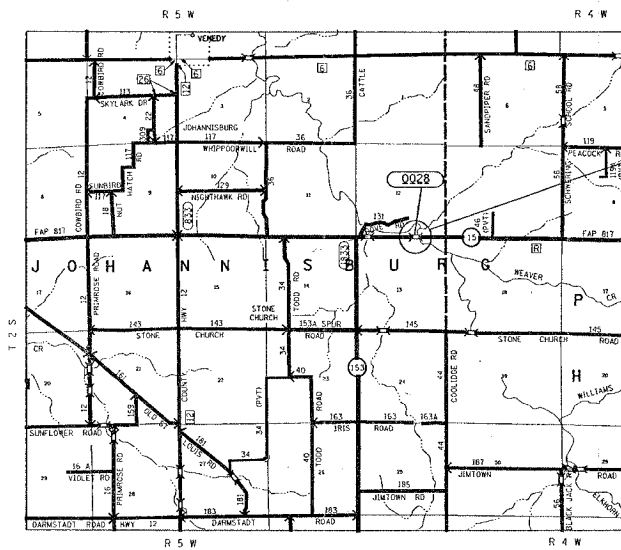
MICROFILMED _____
REEL NUMBER _____
AWARDED _____
RESIDENT ENGINEER _____
AS BUILT CHANGES WERE MADE
ON THE FOLLOWING SHEETS



FULL SIZE PLANS HAVE BEEN PREPARED USING STANDARD ENGINEERING SCALES. REDUCED SIZED PLANS WILL NOT CONFORM TO STANDARD SCALES. IN MAKING MEASUREMENTS ON REDUCED PLANS, THE ABOVE SCALES MAY BE USED.

J.U.L.I.E.
JOINT UTILITY LOCATION INFORMATION FOR EXCAVATION
1-800-892-0123

TRAFFIC DATA
ADT: 180J (2006)
ADT: 2500 (2026)
SU: 8.8Z
MU: 7.4Z



LATITUDE: 38.364886 LONGITUDE: 89.59943

PROJECT LOCATION
IL 15 OVER ELKHORN CREEK
(SN: 095-0028)
STA 690+00.00

STATE OF ILLINOIS
DEPARTMENT OF TRANSPORTATION
DIVISION OF HIGHWAYS

SUBMITTED Dec 20 2005
Mark C. Jones
DEPUTY DIRECTOR OF HIGHWAYS
REGION FIVE ENGINEER

February 3, 2006
Mike Hine /RD
ENGINEER OF DESIGN AND ENVIRONMENT

February 3, 2006
Milton R. Sees, P.E. /RD
DIRECTOR, DIVISION OF HIGHWAYS

**PRINTED BY THE AUTHORITY
OF THE STATE OF ILLINOIS**