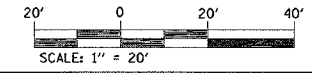
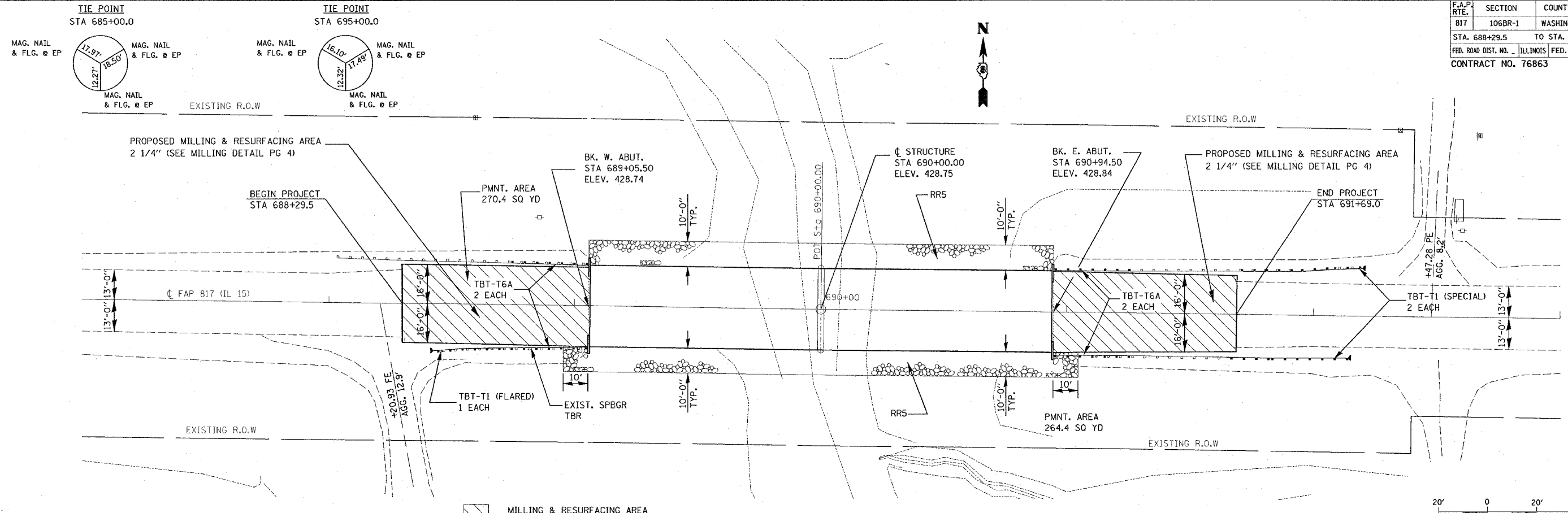


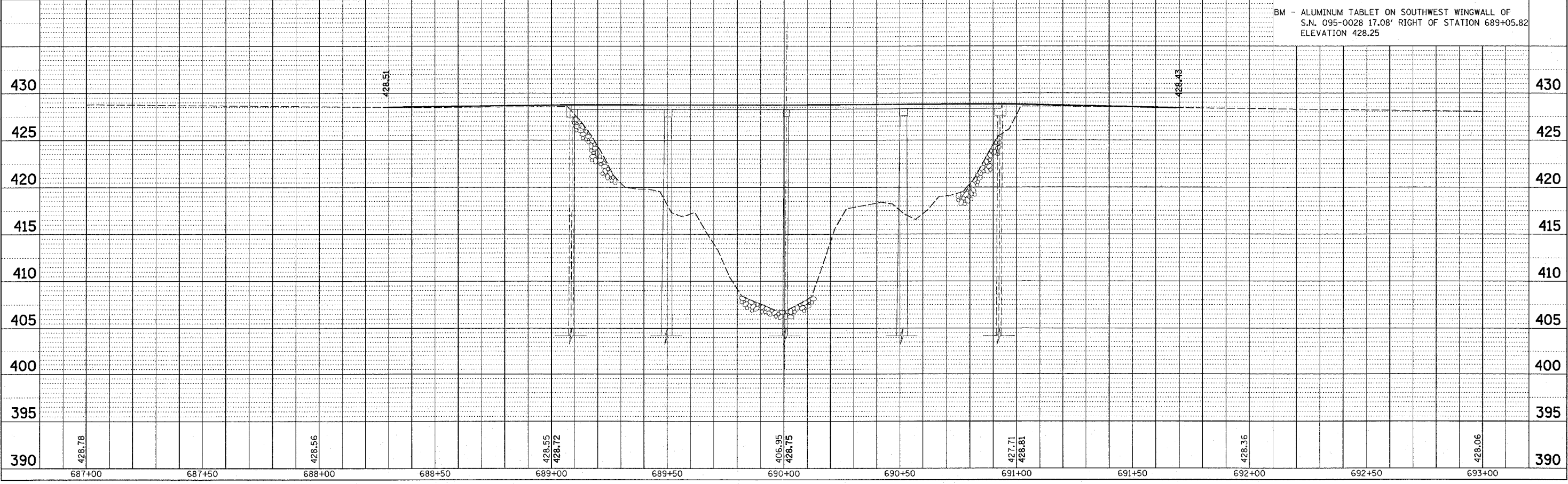
F.A.P. RTE.	SECTION	COUNTY	TOTAL SHEETS	SHEET NO.
817	106BR-1	WASHINGTON	23	9
STA. 688+29.5		TO STA. 691+69.0		
FED. ROAD DIST. NO. ILLINOIS FED. AID PROJECT				
CONTRACT NO. 76863				



DATE	
BY	
REVIEWED	
NOTED	
ALIGNED	
CHECKED	
FILED	
NO.	

DATE	
BY	
REVIEWED	
NOTED	
ALIGNED	
CHECKED	
FILED	
NO.	

PLOT DATE = 12/16/2005
 FILE NAME = c:\pwworkspace\106BR-1\plan\p1-01305a.dgn
 REFERENCE = REF#



BM - ALUMINUM TABLET ON SOUTHWEST WINGWALL OF S.N. 095-0028 17.08' RIGHT OF STATION 689+05.82 ELEVATION 428.25