

F.A. RTE.	SECTION	COUNTY	TOTAL SHEETS	SHEET NO.
*	**	***	13	1

- * Various
 - ** Dist. 8 TS Modifications 2006-1
 - *** St. Clair & Madison
- D-98-092-05

INDEX OF SHEETS

- 1 COVER SHEET
- 2-3 SUMMARY OF QUANTITIES
- 4 GENERAL NOTES AND LEGEND
- 5 T.S. PLAN (IL RTE. 161 @ S. GREENMOUNT RD.)
- 6 T.S. PLAN (N. GREENMOUNT RD. @ LEBANON AVE.)
- 7 T.S. PLAN (IL RTE. 111 @ BUNKUM RD.)
- 8 T.S. PLAN (IL RTE. 163 @ MINE HAUL RD./ZINGG RD.)
- 9 T.S. PLAN (IL RTE. 143 @ WANDA RD./BIRCH RD.)
- 10 CABLE DIAGRAM (N. GREENMOUNT RD. @ LEBANON AVE.)
- 11 CABLE DIAGRAM (IL RTE. 111 @ BUNKUM RD.)
- 12 CABLE DIAGRAM (IL RTE. 163 @ MINE HAUL RD./ZINGG RD.)
- 12 CABLE DIAGRAM (IL RTE. 143 @ WANDA RD./BIRCH RD.)
- 13 DETAILS

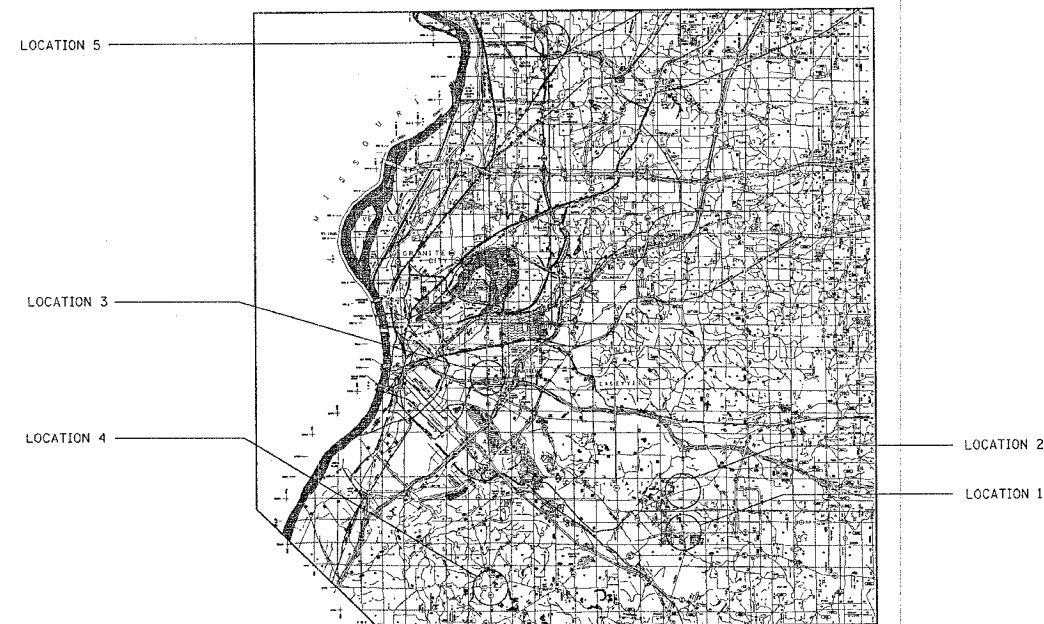
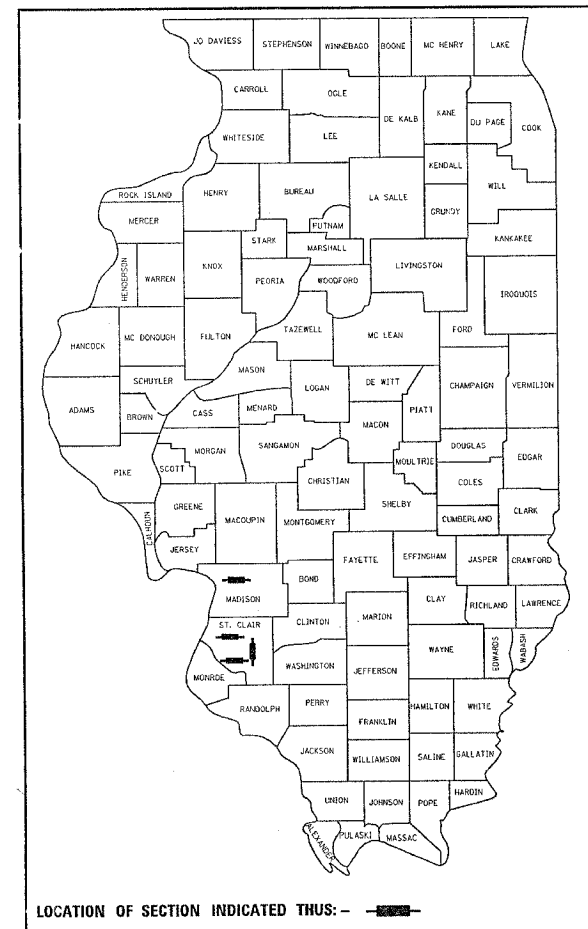
STANDARDS

424001-04	702001-05
701001-01	814001
701006-02	877001-02
701101-01	878001-03
701106-01	880001
701301-02	880006
701701-04	

STATE OF ILLINOIS
DEPARTMENT OF TRANSPORTATION
DIVISION OF HIGHWAYS

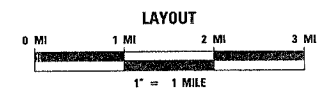
PROPOSED
HIGHWAY PLANS

VARIOUS ROUTES
SECTION DIST 8 TS MODIFICATIONS 2006-1
PROJECT: HS-000S (477)
ST. CLAIR & MADISON COUNTIES
TRAFFIC SIGNAL MODIFICATIONS
C-98-119-05



LOCATION MAP

FOR LOCATION DETAIL SEE SHEET # 2



- ADT - ESTIMATED (2006)
- ILL. RTE. 161 @ S. GREENMOUNT RD. (LOC. # 1)
 - ILL. RTE. 161 (EB) - 23,600
 - ILL. RTE. 161 (WB) - 17,200
 - S. GREENMOUNT RD. (NB) - 22,000
 - S. GREENMOUNT RD. (SB) - 17,300
 - N. GREENMOUNT RD. @ LEBANON AVE. (LOC. # 2)
 - N. GREENMOUNT RD. (NB) - 17,300
 - N. GREENMOUNT RD. (SB) - 17,700
 - LEBANON AVE. (EB) - 14,500
 - LEBANON AVE. (WB) - 17,300
 - ILL. RTE. 111 @ BUNKUM RD. (LOC. # 3)
 - ILL. RTE. 111 (NB) - 16,900
 - ILL. RTE. 111 (SB) - 12,000
 - BUNKUM RD. (EB) - 7,500
 - BUNKUM RD. (WB) - 3750
 - ILL. RTE. 163 @ MINEHAUL RD./ZINGG RD. (LOC. # 4)
 - ILL. RTE. 163 (NB) - 4,300
 - ILL. RTE. 163 (SB) - 4,150
 - MINEHAUL RD. (WB) - 550
 - ZINGG RD. - (EB) - 425
 - ILL. RTE. 143 @ WANDA RD. (LOC. # 5)
 - ILL. RTE. 143 (EB) - 12,500
 - ILL. RTE. 143 (WB) - 12,100
 - WANDA RD. (NB) - 2,500
 - BIRCH RD. (SB) - 1,100

STATE OF ILLINOIS
DEPARTMENT OF TRANSPORTATION
DIVISION OF HIGHWAYS

SUBMITTED 11/23/05 20
Wayne C. Romis
 DEPUTY DIRECTOR OF HIGHWAYS
 REGION FIVE ENGINEER

February 3, 2006
Mike Hine
 ENGINEER OF DESIGN AND ENVIRONMENT

February 3, 2006
Milton R. Sosa P.E.
 DIRECTOR, DIVISION OF HIGHWAYS

PRINTED BY THE AUTHORITY
OF THE STATE OF ILLINOIS

PROJECT ENGINEER: PATTI LEBEAU (618) 346 - 3179
SQUAD LEADER: BHARAT PATEL (618) 346 - 3190

FULL SIZE PLANS HAVE BEEN PREPARED USING STANDARD ENGINEERING SCALES. REDUCED SIZED PLANS WILL NOT CONFORM TO STANDARD SCALES. IN MAKING MEASUREMENTS ON REDUCED PLANS, THE ABOVE SCALES MAY BE USED.

JOINT UTILITY LOCATION INFORMATION FOR EXCAVATION

CONTRACT NO. 76951

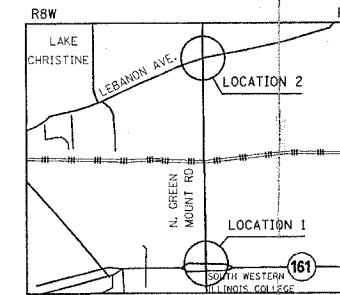
SUMMARY OF QUANTITIES

ST. CLAIR CO. MADISON CO.

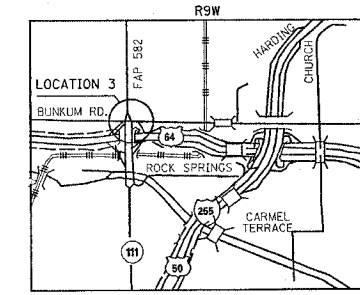
CONTRACT NO. 76951				
F.A. RTE.	SECTION	COUNTY	TOTAL SHEETS	SHEET NO.
•	••	•••	13	2
STA.		TO STA.		
FED. ROAD DIST. NO.	ILLINOIS FED. AID PROJECT			

- Various
- Dist. 8 TS Modifications 2006-1
- St. Clair & Madison

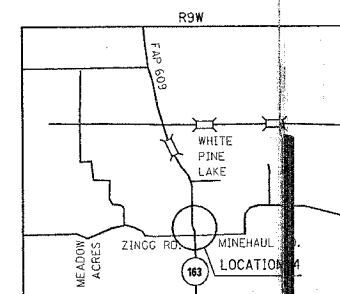
SUMMARY OF QUANTITIES			URBAN TOTAL QUANTITIES	CONSTRUCTION TYPE CODE - Y031-1F				
CODE NO	ITEM	UNIT		IL 161 @ S. GREENMOUNT RD. FED - 90% STATE - 7.5% COUNTY - 2.5%	LEBANON AVE. @ N. GREENMOUNT RD. FED. - 90% STATE - 5% COUNTY - 5%	IL 111 @ BUNKUM RD. FED. - 90% STATE - 10%	IL 163 @ ZINGG RD. FED - 90% STATE - 10%	IL 143 @ WANDA RD. FED. - 90% STATE - 10%
44002020	CONCRETE MEDIAN SURFACE REMOVAL	SQ FT	215					215
60618300	CONCRETE MEDIAN SURFACE, 4 INCH	SQ FT	215					215
67000400	ENGINEER'S FIELD OFFICE, TYPE A	CAL MO	6	1	1.5	1	1.5	1
67100100	MOBILIZATION	L SUM	1	0.2	0.2	0.2	0.2	0.2
70102635	TRAFFIC CONTROL AND PROTECTION, STANDARD 701701	L SUM	1	0.3	0.3	0.2		0.2
72400710	RELOCATE SIGN PANEL - TYPE 1	SQ FT	20.5				20.5	
80300100	LOCATING UNDERGROUND CABLE	FOOT	10					10
80500100	SERVICE INSTALLATION, TYPE A	EACH	2				2	
80803570	TRAFFIC SIGNAL WOOD POLE, 30 FT., CLASS 5	EACH	2				2	
81012500	CONDUIT IN TRENCH, 1 1/2" DIA., PVC	FOOT	65				55	10
81018400	CONDUIT PUSHED, 1 1/2" DIA., GALVANIZED STEEL	FOOT	90					90
81100500	CONDUIT ATTACHED TO STRUCTURE, 1 1/2" DIA., GALVANIZED STEEL	FOOT	30				15	15
81500200	TRENCH AND BACKFILL FOR ELECTRICAL WORK	FOOT	65				55	10
85800100	FLASHER CONTROLLER	EACH	2				2	
87301225	ELECTRIC CABLE IN CONDUIT, SIGNAL NO. 14 3C	FOOT	1850		870	450	160	370
87301805	ELECTRIC CABLE IN CONDUIT, SERVICE, NO. 6 2 C	FOOT	20				20	
87502680	TRAFFIC SIGNAL POST, ALUMINUM 14 FT.	EACH	2				2	
87800100	CONCRETE FOUNDATION, TYPE A	FOOT	6				6	
87900200	DRILL EXISTING HANDHOLE	EACH	1					1
88200300	TRAFFIC SIGNAL BACKPLATE, PLASTIC	EACH	16	8	8			
89100200	ILLUMINATED SIGN, FIBER-OPTIC	EACH	6		4	2		
89502350	REMOVE AND REINSTALL ELECTRIC CABLE FROM CONDUIT	FOOT	7893		3590	3715		588
X0321297	REMOVE EXISTING SIGN POST	EACH	2				2	
X8801075	SIGNAL HEAD, POLYCARBONATE, LED, 1-FACE, 1-SECTION, BRACKET MOUNTED	EACH	4				4	
X8801100	SIGNAL HEAD, POLYCARBONATE, LED, 1-FACE, 1-SECTION, POST MOUNTED	EACH	1					1
X8801310	SIGNAL HEAD, POLYCARBONATE, LED, 1-FACE, 3-SECTION, MAST ARM MOUNTED	EACH	7	3	4			
X8801350	SIGNAL HEAD, POLYCARBONATE, LED, 1-FACE, 4-SECTION, MAST ARM MOUNTED	EACH	3	3				
X8801400	SIGNAL HEAD, POLYCARBONATE, LED, 1-FACE, 5-SECTION, MAST ARM MOUNTED	EACH	6	2	4			



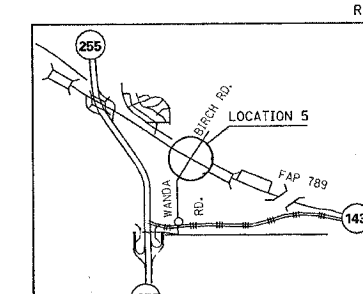
- 1 IL RTE. 161 @ S. GREENMOUNT RD.
- 2 N. GREENMOUNT RD. @ LEBANON AVE.



- 3 IL RTE. 111 @ BUNKUM RD.



- 4 IL RTE. 163 @ MINE HAUL RD. @ ZINGG RD.



- 5 IL RTE. 143 @ WANDA RD./BIRCH RD.

DETAIL LOCATION MAPS

PLOT DATE = #DATE#
 FILE NAME = #FILE#
 PLOT SCALE = #SCALE#
 REFERENCE = #REF#

F.A. RTE.	SECTION	COUNTY	TOTAL SHEETS	SHEET NO.
*	**	***	13	3
STA.		TO STA.		
FED. ROAD DIST. NO.	ILLINOIS	FED. AID PROJECT		

- Various
- Dist. 8 TS Modifications 2006-1
- St. Clair & Madison

ILLINOIS DEPARTMENT OF TRANSPORTATION

SUMMARY OF QUANTITIES

ST. CLAIR CO. MADISON CO.

SUMMARY OF QUANTITIES			URBAN TOTAL QUANTITIES	CONSTRUCTION TYPE CODE - Y031-1F				
CODE NO	ITEM	UNIT		IL 161 @ S. GREENMOUNT RD. FED - 90% STATE - 7.5% COUNTY - 2.5%	LEBANON AVE. @ N. GREENMOUNT RD. FED - 90% STATE - 5% COUNTY - 5%	IL 111 @ BUNKUM RD. FED - 90% STATE - 10%	IL 163 @ ZINGG RD. FED - 90% STATE - 10%	IL 143 @ WANDA RD. FED - 90% STATE - 10%
X8801435	SIGNAL HEAD, POLYCARBONATE, LED, 2-FACE, 1-3 SECTION, 1-4 SECTION, BRACKET MOUNTED	EACH	2	2				
X8801437	SIGNAL HEAD, POLYCARBONATE, LED, 2-FACE, 1-3-SECTION, 1-5-SECTION, BRACKET MOUNTED	EACH	2	2				
X8950305	REMOVE EXISTING SIGNAL HEAD	EACH	24	16	8			

F.A.P. RTE.	SECTION	COUNTY	TOTAL SHEETS	SHEET NO.
•	••	•••	13	4
STA.		TO STA.		
FED. ROAD DIST. NO.	ILLINOIS	FED. AID PROJECT		

ELECTRICAL GENERAL NOTES

- ALL VEHICLE SIGNAL HEADS SHALL HAVE 12" SECTIONS. MOUNTING HARDWARE SHALL BE UNPAINTED ALUMINUM. ALL BOLTS, SCREWS, NUTS AND WASHERS SHALL BE STAINLESS STEEL. ANTI-SEIZE PASTE COMPOUND SHALL BE USED ON ALL MOUNTING HARDWARE FIELD CONNECTIONS.
- BACKPLATES SHALL BE ABS PLASTIC.
- THE CONTROLLER CABINET SHALL BE UNPAINTED ALUMINUM.
- ALL PROPOSED TRAFFIC SIGNAL CABLES SHALL BE #14 AWG STRANDED COPPER UNLESS OTHERWISE SPECIFIED. TERMINAL ENDS SHALL HAVE CRIMPED-ON RING TONGUE CONNECTORS.
- ILLINOIS STATE LAW REQUIRES A 48 HOUR NOTICE BE GIVEN TO UTILITIES BEFORE DIGGING. FIELD MARKING OF FACILITIES MAY BE OBTAINED BY CONTACTING J.U.L.I.E. OR FOR NON-MEMBERS, THE UTILITY COMPANY DIRECTLY. AGENCIES KNOWN TO HAVE FACILITIES WITHIN THE PROJECT AREA ARE AS FOLLOWS:

IL 161 @ S. GREENMOUNT RD.

- AMEREN IP (ELECT. & GAS)
- CHARTER COMM. (CABLE TV)
- ILL. AMERICAN WTR. CO. (WATER)
- McLEOD USA TELE COMM.
- METRO (COMM.)
- SBC (COMM.)
- ST. CLAIR TOWNSHIP (SAN. SEWER)

N. GREENMOUNT RD. @ LEBANON AVE.

- AMEREN IP (ELECT. & GAS)
- AT&T CORP. (COMM)
- CHARTER COMM. (CABLE TV)
- ILL. AMERICAN WTR. CO. (WATER)
- SBC (COMM.)
- VILLAGE OF SHILOH (WTR & SAN. SEWER)
- ST. CLAIR TOWNSHIP

IL 111 @ BUNKUM RD.

- AMEREN IP (GAS)
- AMAREN UE (ELECTRIC)
- CENTERPOINT ENERGY (PIPE LINE)
- ILL. AMERICAN WTR. CO. (WATER)
- MARATHON ASHLAND PIPE LINE, LLC
- MEDIACOM (CABLE TV)
- SBC (COMM)
- VILLAGE OF WASHINGTON PARK (SAN. SEWER)

IL 163 @ MINE HAUL RD./ZINGG RD.

- AMEREN IP (GAS)
- HARRISONVILLE TEL CO. (COMM)
- MONROE CO. ELECTRIC CORP., INC. (ELECT)
- SBC (COMM)
- VERIZON NORTH, INC. (COMM)

IL 143 @ WANDA RD./BIRCH RD.

- AMEREN IP (ELECT. & GAS)
- AT&T CORP. (COMM)
- BUCKEYE PIPE LINE CO.
- CHARTER COMM., INC. (COMM)
- EXPLORER PIPELINE CO.
- NORTHEAST CENTRAL WATER DIST. (WATER)
- PLAINS PIPELINE, L.P.
- SBC (COMM)
- SOUTHWESTERN ELECTRIC CO-OP., INC. (ELECT)

(MEMBERS OF J.U.L.I.E. PHONE (800) - 892-0123 ARE INDICATED BY *)
NON-J.U.L.I.E. MEMBERS MUST BE NOTIFIED INDIVIDUALLY.

- LOCATE UNDERGROUND CABLES PRIOR TO ATTEMPTING TO CONSTRUCT THIS PROJECT.
- INSTALL PROPOSED "ILLUMINATED SIGN, FIBER-OPTIC" NEXT TO "LEFT TURN SIGNAL". RELOCATE EXISTING R10-12 SIGN IMMEDIATE RIGHT TO "ILLUMINATED SIGN". THE COST FOR RELOCATING R10-12 SIGN SHALL BE INCLUDED IN THE COST FOR "ILLUMINATED SIGN, FIBER-OPTIC". NO ADDITIONAL COMPENSATION WILL BE ALLOWED FOR RELOCATING R10-12 SIGN.
- ANY HARDWARE SUCH AS RELAY, LOAD SWITCH ETC. REQUIRED FOR COMPLETE INSTALLATION AND OPERATION OF ILLUMINATED SIGN SHALL BE INCLUDED IN PAY ITEM, "ILLUMINATED SIGN, FIBER OPTIC".
- THE CONTRACTOR SHALL DRILL TWO 1 1/2" DIAMETER HOLES IN EXISTING WOOD SIGN SUPPORT AT THE INTERSECTION OF ILL. RTE. 143 WITH WANDA RD./BIRCH RD. IN ACCORDANCE WITH ARTICLE 730.03 OF THE STANDARD SPECIFICATIONS. THE COST SHALL BE INCLUDED IN PAY ITEM, "SIGNAL HEAD, POLY, LED, 1-FACE, 1-SECTION, P.M.".
- UNDERGROUND MARKING TAPE SHALL BE INSTALLED WITH ALL TRENCH AND BACKFILL FOR ELECTRICAL WORK ACCORDING TO ARTICLE 815.03 (d) AND 1066.05 OF THE STANDARD SPECIFICATIONS.
- ALL EXISTING LOAD SWITCHES ASSOCIATED WITH PROPOSED LED SIGNAL HEADS SHALL BE REPLACED. THE NEW LOAD SWITCHES SHALL BE ACCORDING TO ARTICLE 1074.03 (b) (2) OF THE STANDARD SPECIFICATIONS. THE COST SHALL BE INCLUDED IN RESPECTIVE PAY ITEMS FOR " LIGHT EMITTING DIODE (LED) SIGNAL HEAD." NO ADDITIONAL COMPENSATION WILL BE ALLOWED FOR NEW LOAD SWITCHES.
- THE 9-1-1 ADDRESSES FOR LOCATION IL ROUTE 163 @ MINE HAUL RD. / ZINGG RD. ARE AS FOLLOWS:

- NEW SERVICE @ STA. 85+72, EAST OF IL RTE. 163 - " 7176 State Rt. 163 Millstadt 622260 "
- NEW SERVICE @ STA. 101+45, WEST OF IL RTE. 163 - " 7209 State Rt. 163 Millstadt 62260 "

TRAFFIC SIGNALS LEGEND

- RREC REMOVE AND REINSTALL ELECTRIC CABLE FROM CONDUIT
- GSC GALVANIZED STEEL CONDUIT
- PVCC POLYVINYL CHLORIDE CONDUIT
- EXISTING SIGNAL POST
- EXISTING SIGNAL POST WITH BACKPLATE
- EXISTING TRAFFIC SIGNAL MAST ARM
- EXISTING HANDHOLE
- EXISTING DOUBLE HANDHOLE
- EXISTING DETECTOR LOOP
- EXISTING CONTROLLER
- EXISTING STREET NAME SIGN/TRAFFIC SIGN
- EXISTING ILLUMINATED SIGN
- EXISTING SERVICE INSTALLATION
- EXISTING GALVANIZED STEEL CONDUIT
- PROPOSED HANDHOLE
- PROPOSED CONTROLLER
- PROPOSED CONDUIT: "T" TRENCH, "P" PUSH, SIZE SPECIFIED
- PROPOSED STREET NAME SIGN/TRAFFIC SIGN
- PROPOSED ILLUMINATED SIGN
- PROPOSED SERVICE INSTALLATION
- PROPOSED SIGNAL POST
- PROPOSED SIGNAL HEAD, POST MOUNTED ('R'-RED, 'Y'-YELLOW)
- PROPOSED SIGNAL HEAD W/BACK PLATE

- Various
- Dist. 8 TS Modifications 2006-1
- St. Clair & Madison

COMMITMENTS

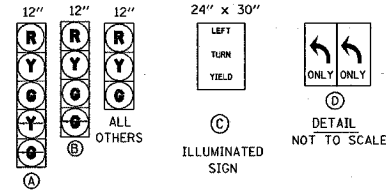
NONE

REVISIONS	
NAME	DATE

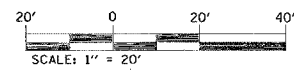
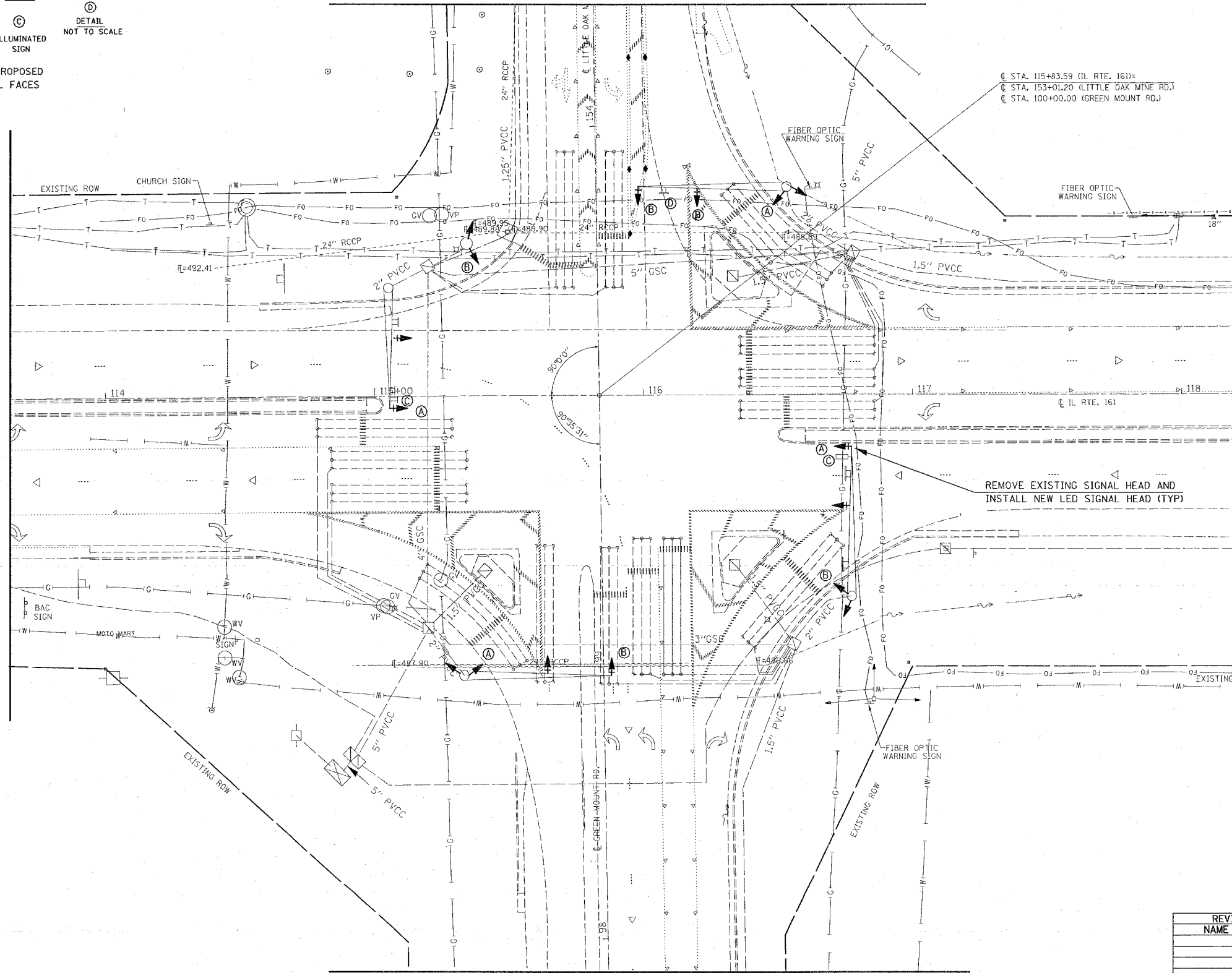
ILLINOIS DEPARTMENT OF TRANSPORTATION
GENERAL NOTES AND LEGEND
FAP ROUTE VARIOUS
SECTION: DIST. 8 TS MODIFICATIONS 2006-1
COUNTIES: ST. CLAIR & MADISON
SCALE: VERT. _____
DATE _____
DRAWN BY _____
CHECKED BY _____

F.A. RTE.	SECTION	COUNTY	TOTAL SHEETS	SHEET NO.
.	**	***	13	5
STA.		TO STA.		
FED. ROAD DIST. NO.	ILLINOIS	FED. AID PROJECT		

- Various
- Dist. 8 TS Modifications 2006-1
- St. Clair & Madison



EXISTING AND PROPOSED TRAFFIC SIGNAL FACES



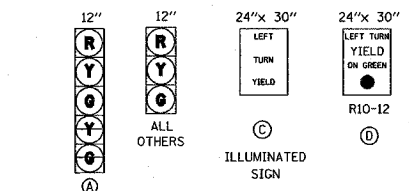
REVISIONS	
NAME	DATE

ILLINOIS DEPARTMENT OF TRANSPORTATION
PLAN VIEW
 FAP ROUTE VARIOUS
 SECTION: DIST. 8 TS MODIFICATIONS 2006-1
 COUNTIES: ST. CLAIR & MADISON
 IL RTE. 161 @ S. GREENMOUNT RD.
 SCALE: VERT. _____ DRAWN BY _____
 HORIZ. _____ CHECKED BY _____
 DATE _____

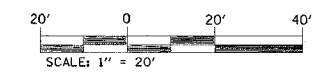
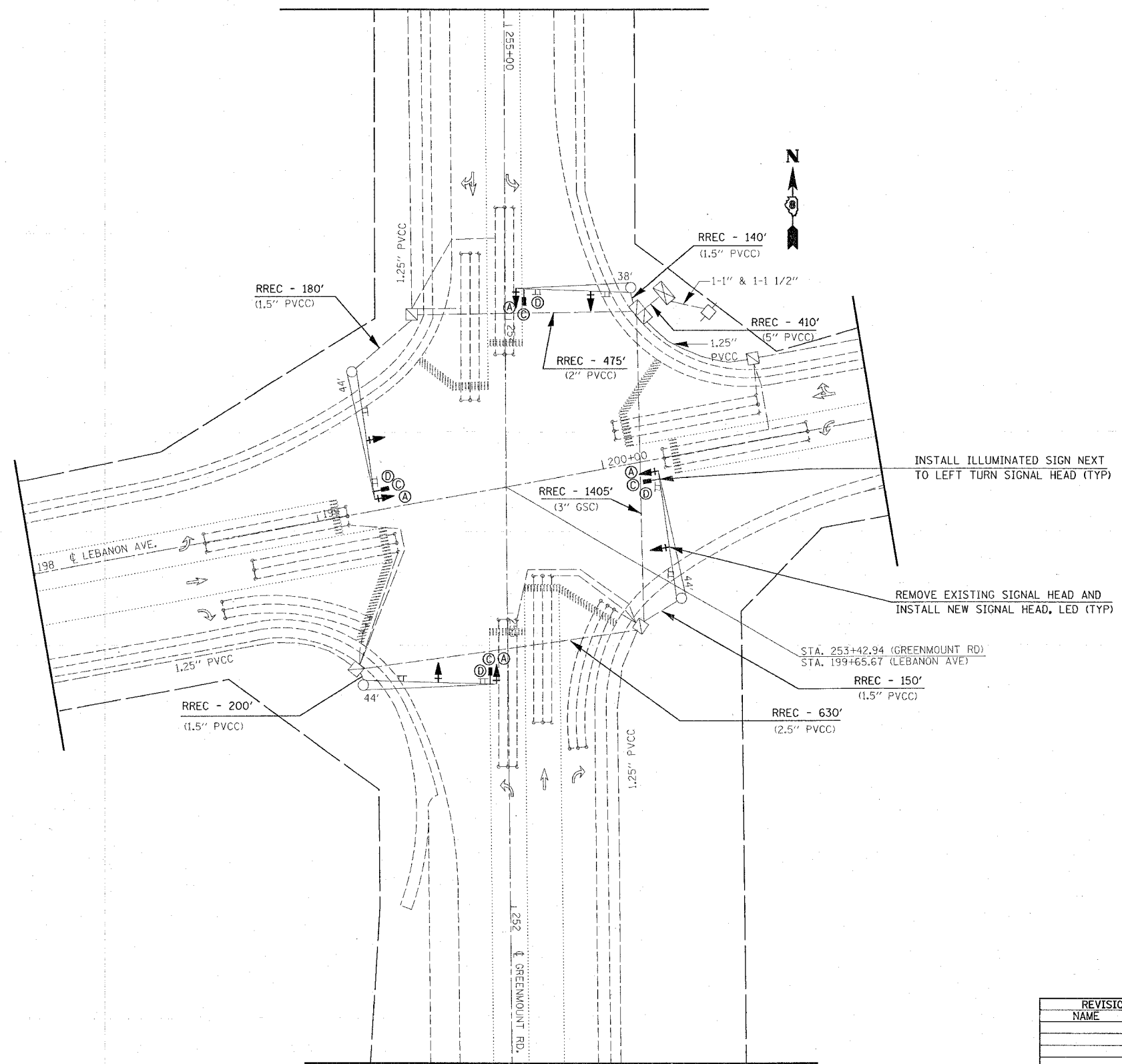
PLOT DATE = 08/25/06
 FILE NAME = 06LELA
 PLOT SCALE = 1/8\"/>

F.A. RTE.	SECTION	COUNTY	TOTAL SHEETS	SHEET NO.
*	**	***	13	6
STA.		TO STA.		
FED. ROAD DIST. NO.	ILLINOIS	FED. AID PROJECT		

- Various
- Dist. 8 TS Modifications 2006-1
- St. Clair & Madison



EXISTING AND PROPOSED TRAFFIC SIGNAL FACES



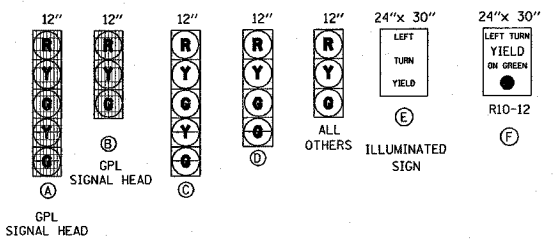
PLOT DATE = #DATE
 PLOT NAME = #FILE
 PLOT SCALE = #SCALE
 REFERENCE = #REF

REVISIONS	
NAME	DATE

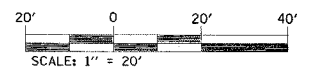
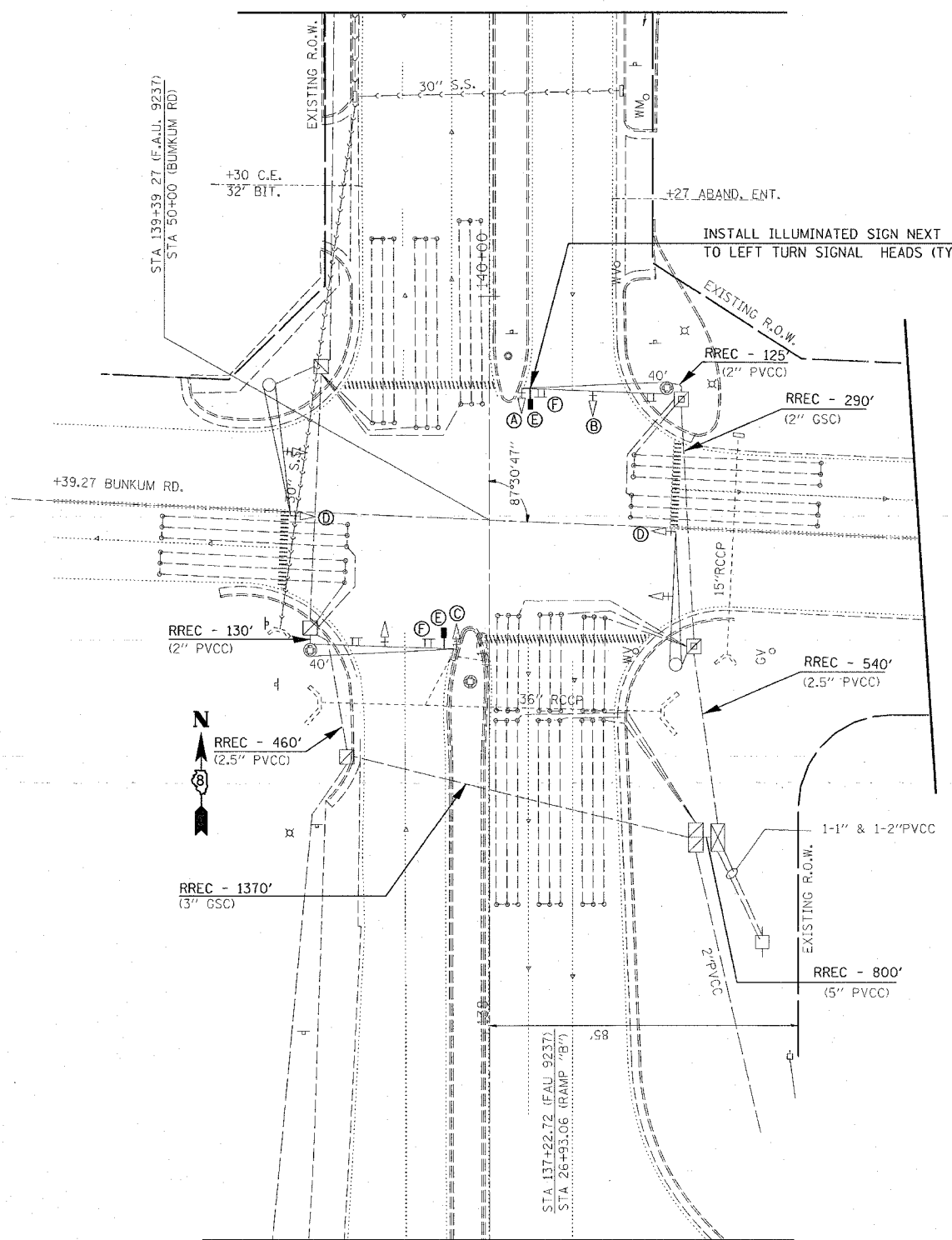
ILLINOIS DEPARTMENT OF TRANSPORTATION
PLAN VIEW
 FAP ROUTE VARIOUS
 SECTION: DIST. 8 TS MODIFICATIONS 2006-1
 COUNTIES: ST. CLAIR & MADISON
 N. GREENMOUNT RD. @ LEBANON AVE.
 SCALE: VERT. _____
 DATE: _____ HORIZ. _____
 DRAWN BY _____
 CHECKED BY _____

F.A. RTE.	SECTION	COUNTY	TOTAL SHEETS	SHEET NO.
*	**	***	13	7
STA.		TO STA.		
FED. ROAD DIST. NO.		ILLINOIS FED. AID PROJECT		

- * Various
- ** Dist. 8 TS Modifications 2006-1
- *** St. Clair & Madison



EXISTING AND PROPOSED TRAFFIC SIGNAL FACES



PLOT DATE *
 FILE NAME *
 PLOT SCALE *
 REFERENCE *

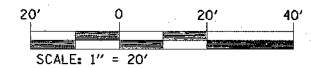
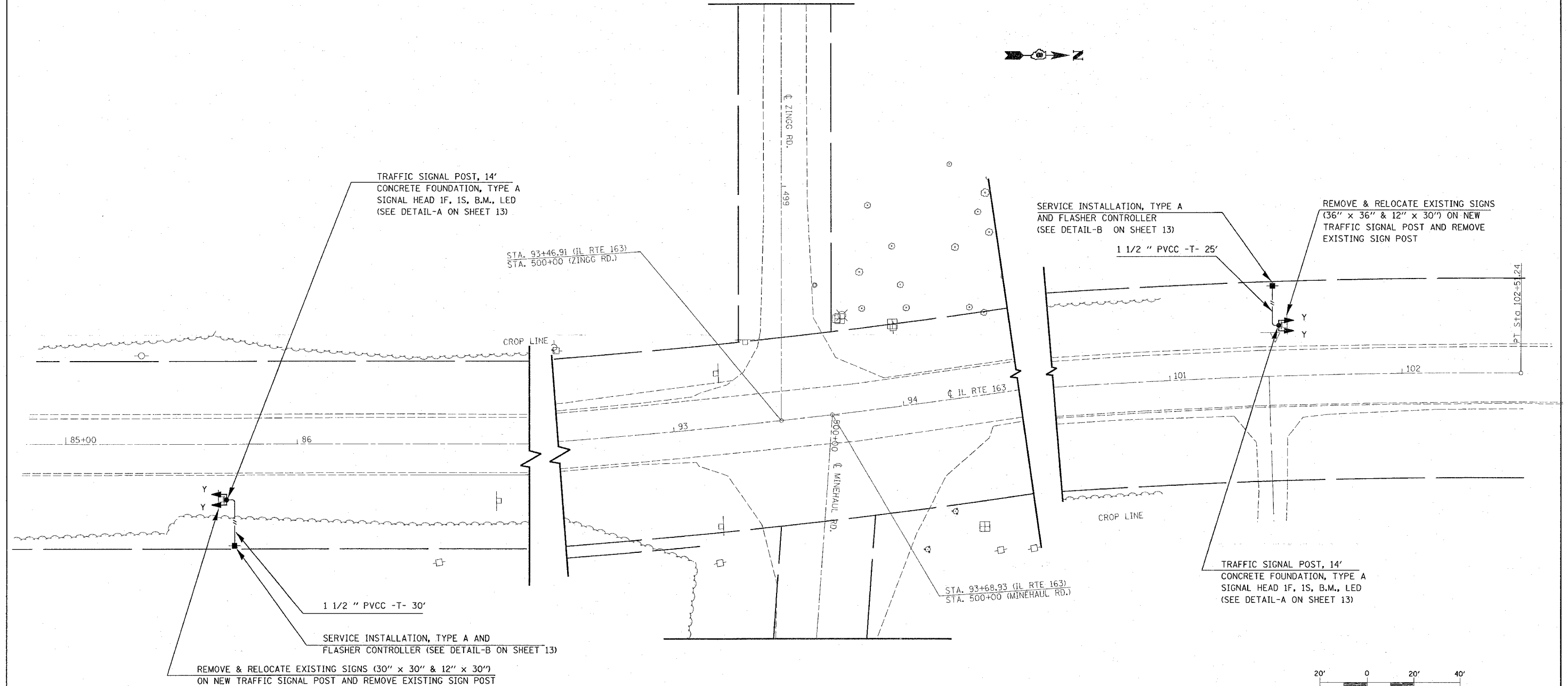
REVISIONS	
NAME	DATE

ILLINOIS DEPARTMENT OF TRANSPORTATION
PLAN VIEW
 FAP ROUTE VARIOUS
 SECTION: DIST. 8 TS MODIFICATIONS 2006-1
 COUNTIES: ST. CLAIR & MADISON
 IL RTE. 111 @ BUNKUM RD.
 SCALE: VERT. DATE
 HORIZ. DRAWN BY
 CHECKED BY

F.A. RTE.	SECTION	COUNTY	TOTAL SHEETS	SHEET NO.
*	**	***	13	8

STA.	TO STA.
FED. ROAD DIST. NO.	ILLINOIS FED. AID PROJECT

- * Various
- ** Dist. 8 TS Modifications 2006-1
- *** St. Clair & Madison

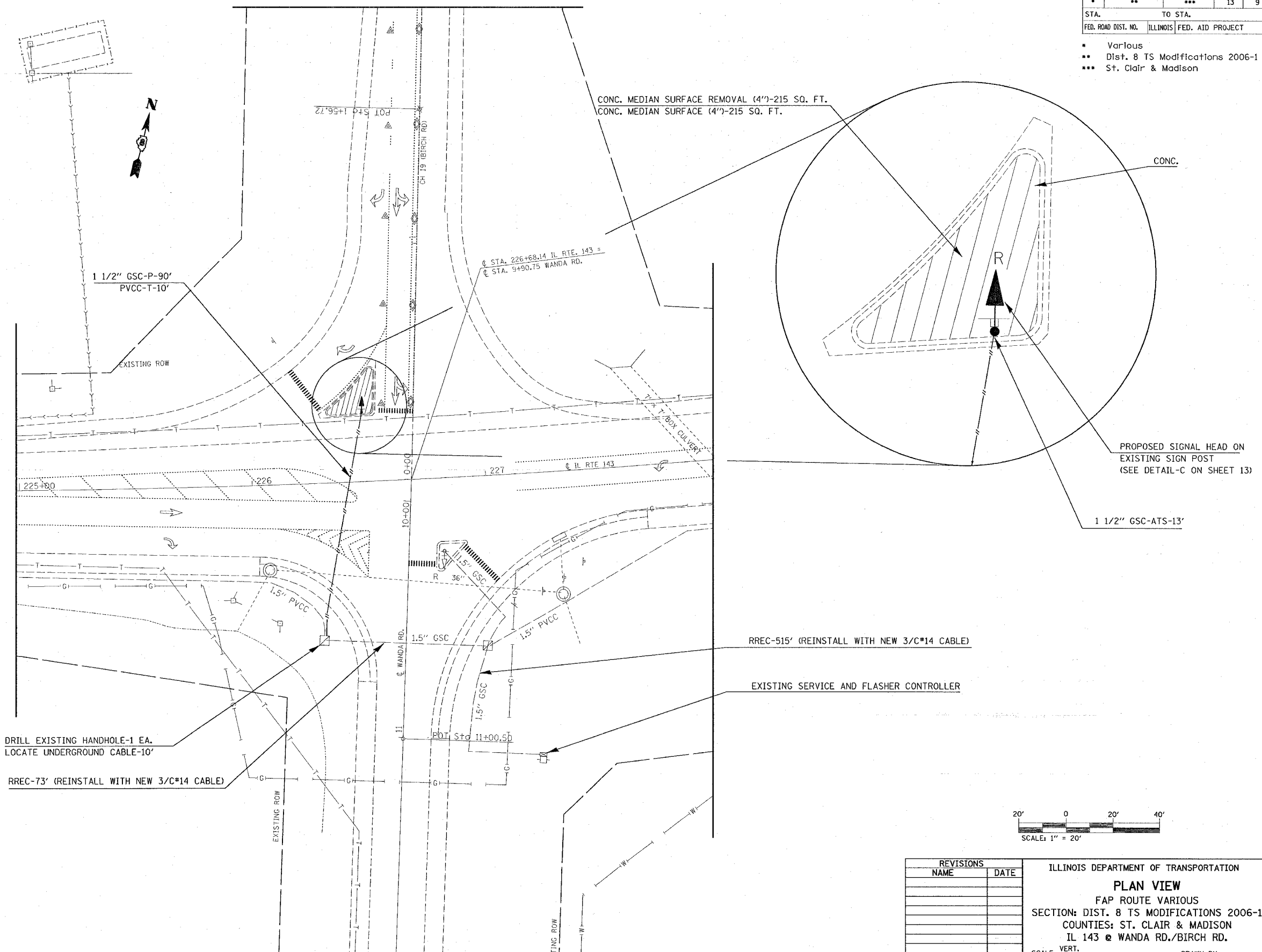


REVISIONS		ILLINOIS DEPARTMENT OF TRANSPORTATION PLAN VIEW FAP ROUTE VARIOUS SECTION: DIST. 8 TS MODIFICATIONS 2006-1 COUNTIES: ST. CLAIR & MADISON IL 163 @ MINE HAUL RD
NAME	DATE	
		SCALE: VERT. DRAWN BY HORIZ. CHECKED BY DATE

PLOT DATE = 11/16/2005
 FILE NAME = c:\p\proj\76951\electrical\plan\163ts.dgn
 PLOT SCALE = 1" = 20'
 REFERENCE = #REF#

F.A. RTE.	SECTION	COUNTY	TOTAL SHEETS	SHEET NO.
*	**	***	13	9
STA.		TO STA.		
FED. ROAD DIST. NO.		ILLINOIS FED. AID PROJECT		

- * Various
- ** Dist. 8 TS Modifications 2006-1
- *** St. Clair & Madison



REVISIONS	
NAME	DATE

ILLINOIS DEPARTMENT OF TRANSPORTATION
PLAN VIEW
 FAP ROUTE VARIOUS
 SECTION: DIST. 8 TS MODIFICATIONS 2006-1
 COUNTIES: ST. CLAIR & MADISON
 IL 143 @ WANDA RD./BIRCH RD.

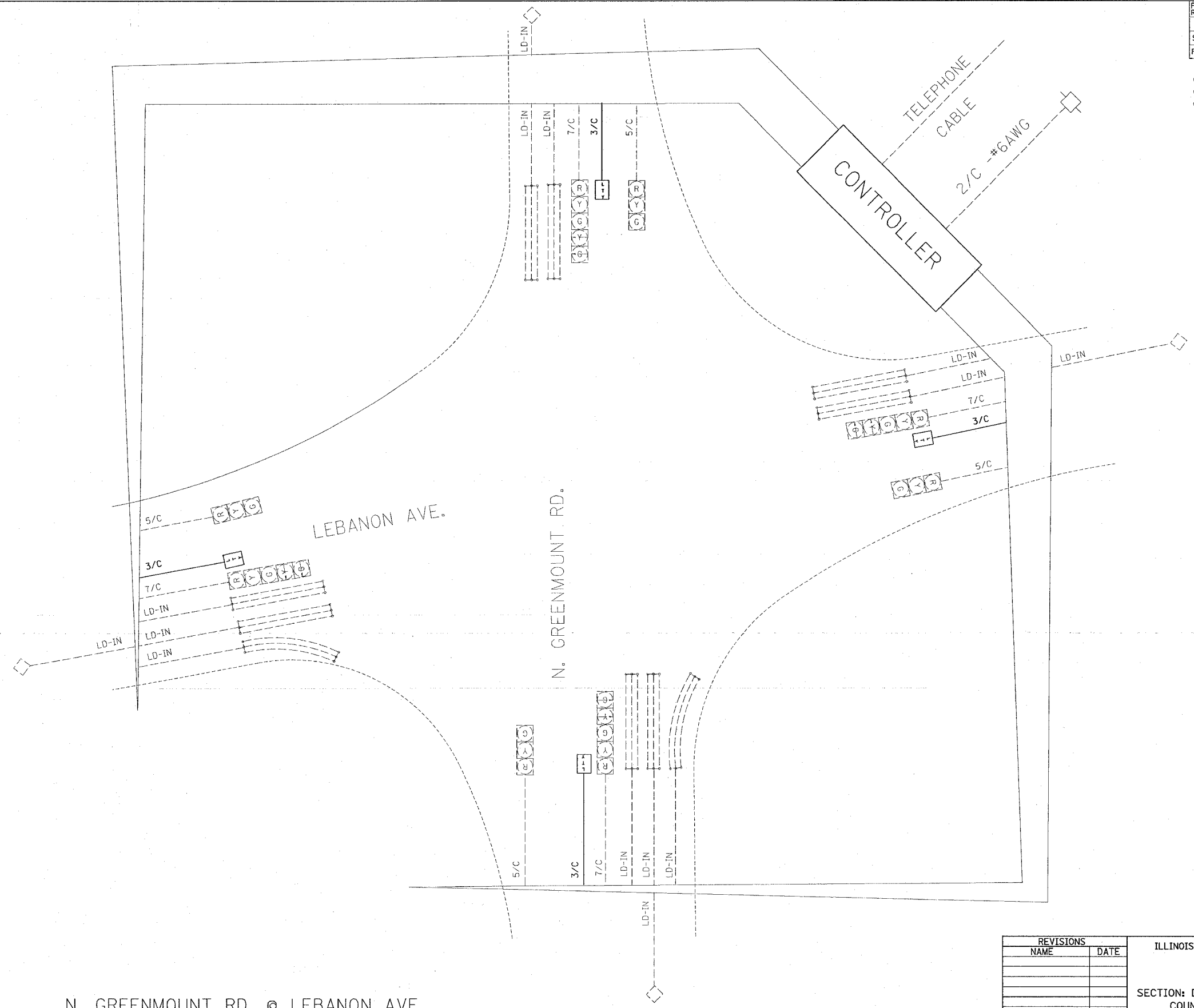
SCALE: VERT. _____
 HORIZ. _____

DATE _____ DRAWN BY _____
 CHECKED BY _____

PLOT DATE = 11/16/2006
 FILE NAME = c:\pvs\keta\ad92285\electrical\sheet\092285a.dgn
 PLOT SCALE = 20.0000' / IN.
 REFERENCE = #REF#

F.A.P. RTE.	SECTION	COUNTY	TOTAL SHEETS	SHEET NO.
*	**	***	13	10
STA.		TO STA.		
FED. ROAD DIST. NO.		ILLINOIS FED. AID PROJECT		

- * Various
- ** Dist. 8 TS Modifications 2006-1
- *** St. Clair & Madison



N. GREENMOUNT RD. @ LEBANON AVE.

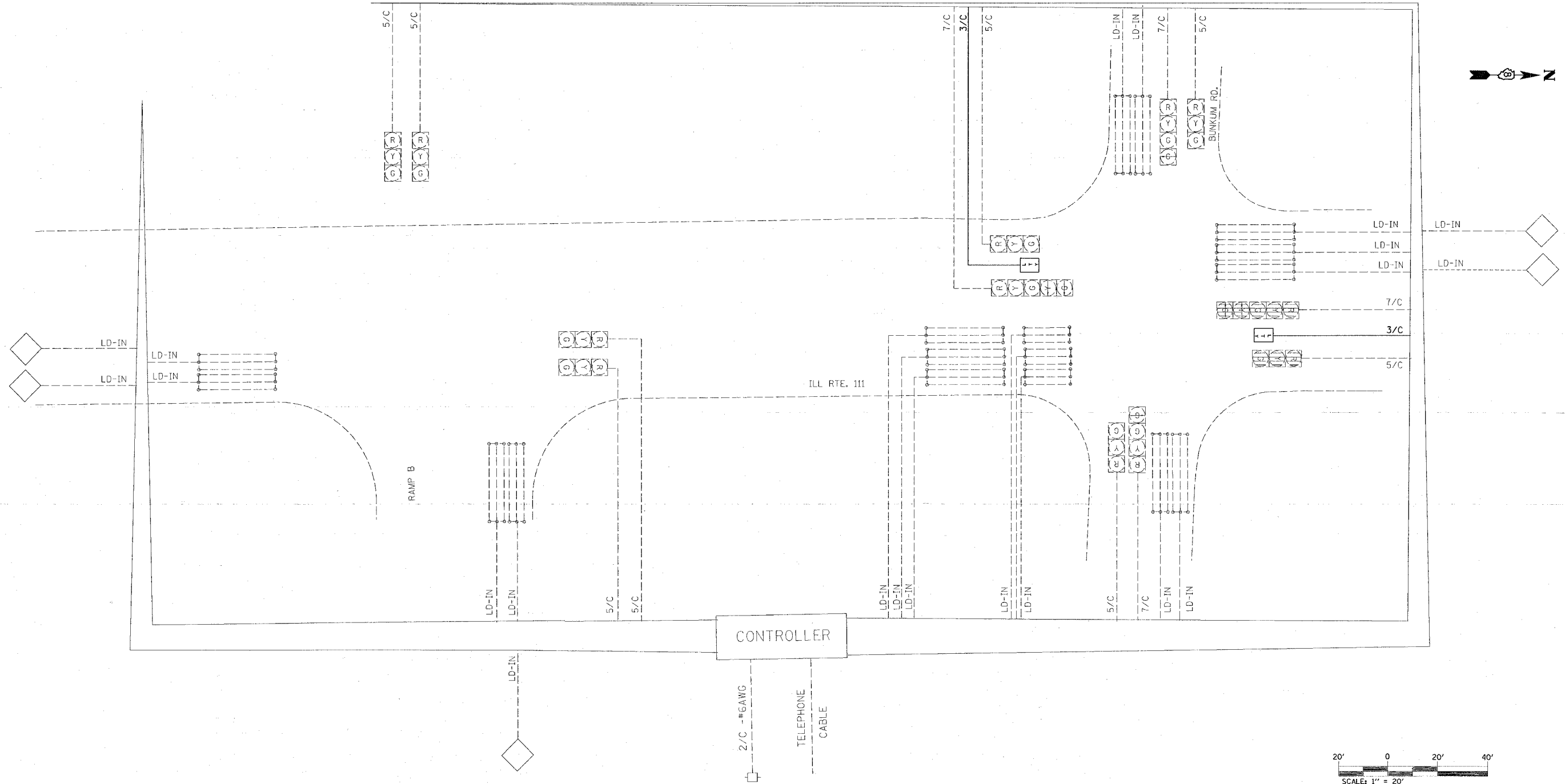
REVISIONS	
NAME	DATE

ILLINOIS DEPARTMENT OF TRANSPORTATION
CABLE DIAGRAM
 FAP ROUTE VARIOUS
 SECTION: DIST. 8 TS MODIFICATIONS 2006-1
 COUNTIES: ST. CLAIR & MADISON
 N. GREENMOUNT RD. @ LEBANON AVE.
 SCALE: VERT. _____ DRAWN BY _____
 HORIZ. _____ CHECKED BY _____
 DATE _____

PLOT DATE = 04/25/06
 FILE NAME = 060425.DWG
 PLOT NAME = 060425.DWG
 USER NAME = 060425

F.A. RTE.	SECTION	COUNTY	TOTAL SHEETS	SHEET NO.
•	••	•••	13	11
STA. TO STA.				
FED. ROAD DIST. NO.	ILLINOIS	FED. AID PROJECT		

- Various
- Dist. 8 TS Modifications 2006-1
- St. Clair & Madison



IL RTE. 111 @ BUNKUM RD.

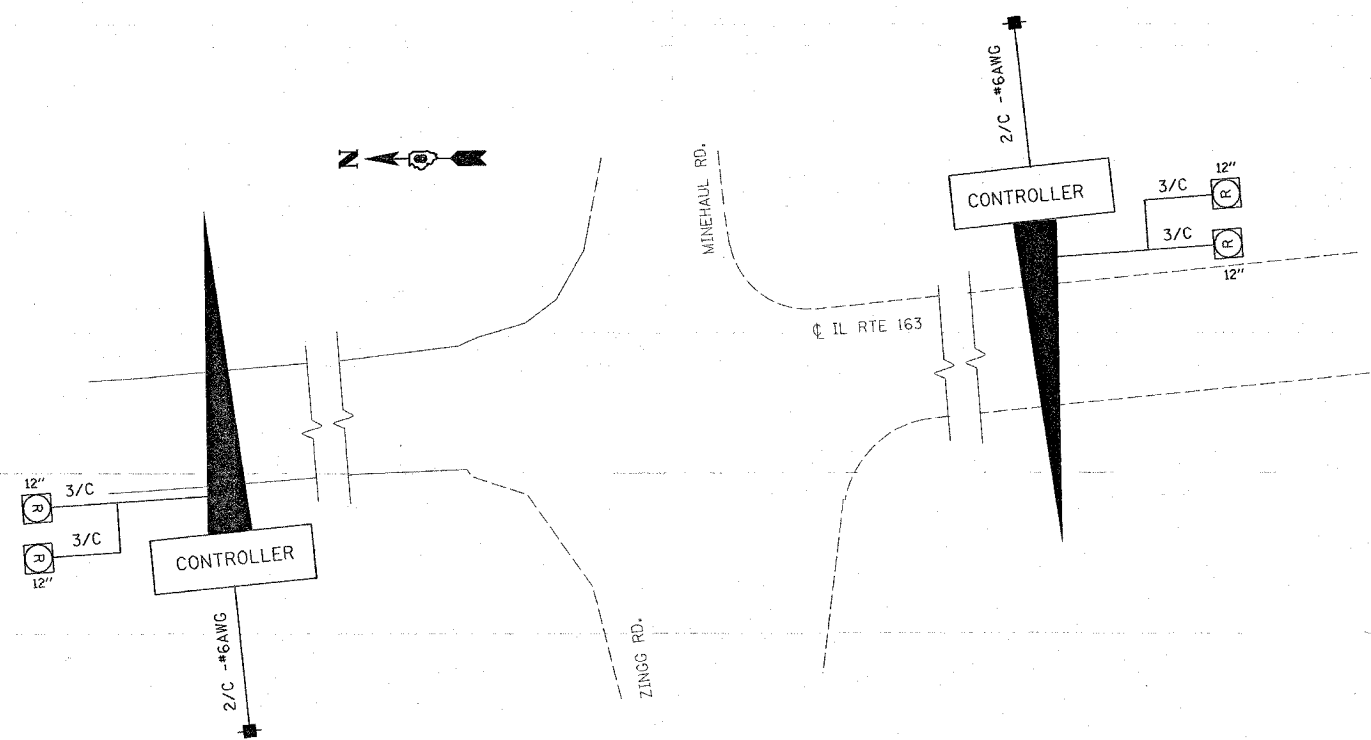
PLOT DATE = #DATE
 PLOT SCALE = #SCALE
 REFERENCE = #REF

REVISIONS	
NAME	DATE

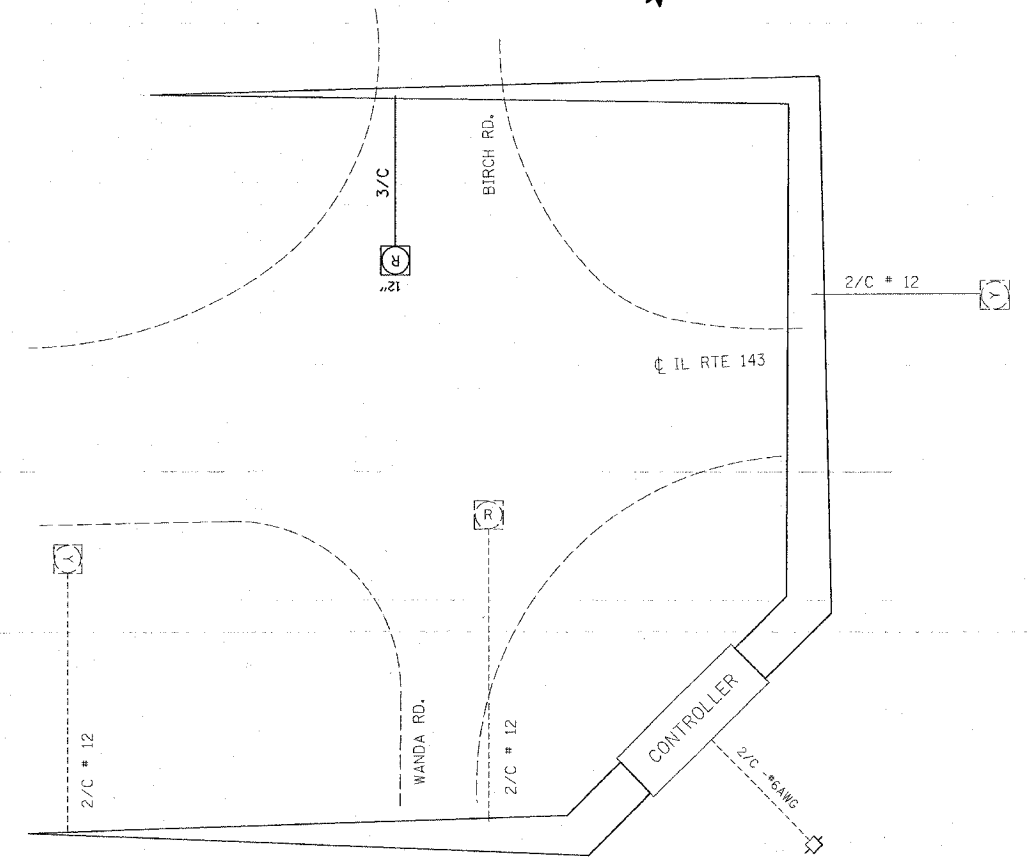
ILLINOIS DEPARTMENT OF TRANSPORTATION
CABLE DIAGRAM
 FAP ROUTE VARIOUS
 SECTION: DIST. 8 TS MODIFICATIONS 2006-1
 COUNTIES: ST. CLAIR & MADISON
 IL RTE. 111 @ BUNKUM RD.
 SCALE: VERT. _____
 HORIZ. _____
 DATE _____
 DRAWN BY _____
 CHECKED BY _____

F.A. RTE.	SECTION	COUNTY	TOTAL SHEETS	SHEET NO.
*	**	***	13	12
STA.		TO STA.		
FED. ROAD DIST. NO.		ILLINOIS FED. AID PROJECT		

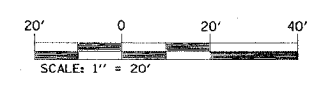
- * Various
- ** Dist. 8 TS Modifications 2006-1
- *** St. Clair & Madison



IL RTE. 163 @ MINEHAUL RD. / ZINGG RD.



ILL RTE. 143 @ WANDA RD.

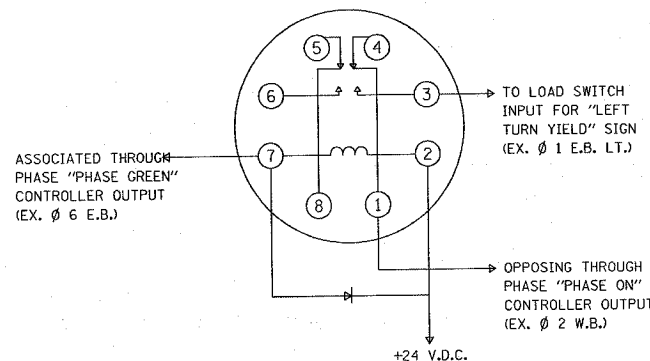


REVISIONS		ILLINOIS DEPARTMENT OF TRANSPORTATION	
NAME	DATE	CABLE DIAGRAM	
		FAP ROUTE VARIOUS	
		SECTION: DIST. 8 TS MODIFICATIONS 2006-1	
		COUNTIES: ST. CLAIR & MADISON	
		SCALE: VERT.	DRAWN BY
		DATE	CHECKED BY

PLOT DATE = #DATE#
 FILE NAME = #FILE#
 SHEET NO. = #SHEET#
 REFERENCE = #REF#

F.A. RTE.	SECTION	COUNTY	TOTAL SHEETS	SHEET NO.
*	**	***	13	13
STA. TO STA.			ILLINOIS FED. AID PROJECT	
FED. ROAD DIST. NO. ILLINOIS FED. AID PROJECT				

Various
 Dist. 8 TS Modifications 2006-1
 St. Clair & Madison

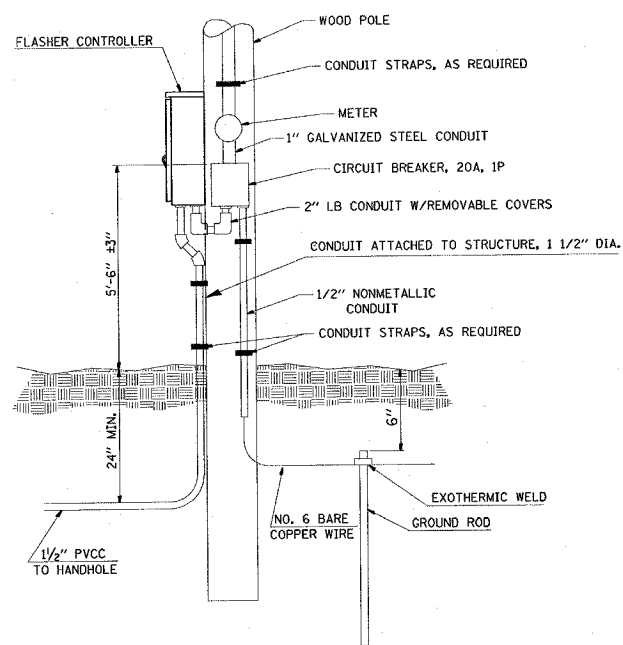


ILLUMINATED "LEFT TURN YIELD" SIGN
 TYPICAL SIGN CONTROL INSTALLATION

NOTES

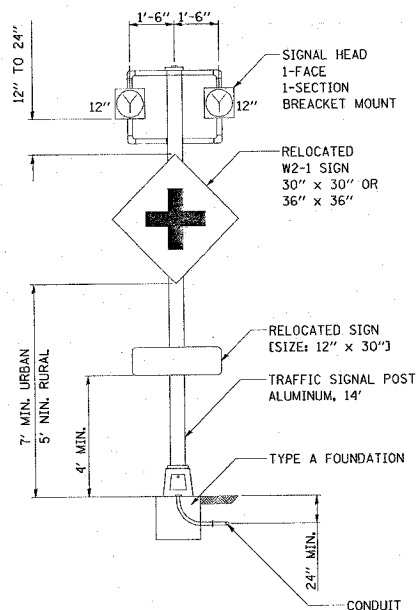
- RELAY SHALL BE POTTER & BRUMFIELD KRPA11D1Y OR EQUIVALENT (24 V.D.C. COIL)
- DIODE SHALL BE 1N4007 OR EQUIVALENT.
- RELAY SOCKET SHALL BE MOUNTED ON A PANEL OF SHEET ALUMINUM.
- THIS DETAIL IS TYPICAL. EACH SIGN WILL REQUIRE A SEPARATE RELAY AND CONNECTIONS WILL VARY BASED ON INTERSECTION PHASING.
- THE 120 V.A.C. CONTROL VOLTAGE SUPPLIED TO THE SIGN SHALL BE SWITCHED BY A STANDARD NEMA SOLID STATE LOAD SWITCH. A SINGLE LOAD SWITCH MAY BE UTILIZED FOR THREE LIGHTED SIGNS.
- THE CONTROL VOLTAGE SHALL BE MONITORED BY THE EXISTING CONFLICT MONITOR LOCATED IN THE CONTROLLER CABINET.
- THE HOUSING OF THE ILLUMINATED SIGN SHALL BE UNPAINTED ALUMINUM.

LOCATIONS: (1) N. GREENMOUNT RD. @ LEBANON AVE.
 (2) IL RTE. 111 @ BUNKUM RD.



DETAIL-B
 SERVICE INSTALLATION TYPE A
 & FLASHER CONTROLLER

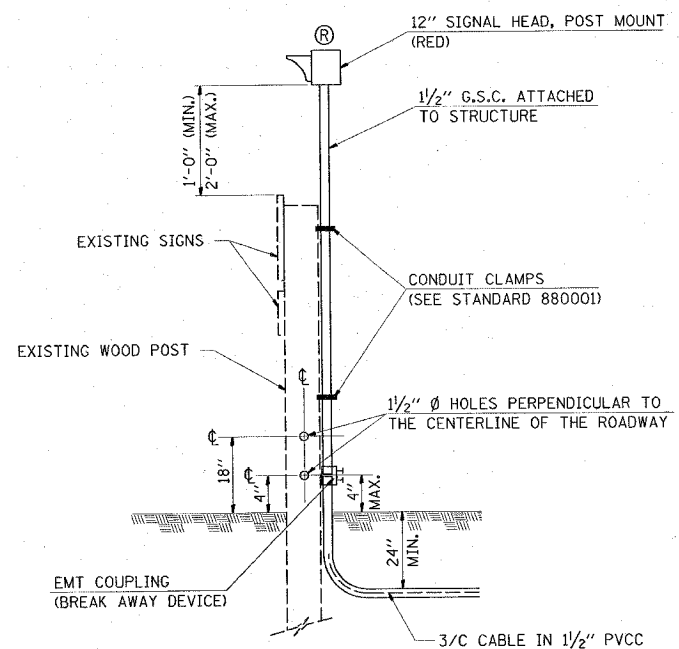
LOCATION: IL RTE. 163 @ MINE HAUL RD./ZINGG RD.



DETAIL-A

SIDE BY SIDE POST MOUNTED
 FLASHING BEACONS
 NOT TO SCALE

LOCATION: IL RTE. 163 @ MINE HAUL RD./ZINGG RD.



DETAIL-C

POST MOUNTED FLASHING BEACON
 ON EXISTING POST

LOCATION: IL RTE. 143 @ WANDA RD./BIRCH RD.

REVISIONS	
NAME	DATE

ILLINOIS DEPARTMENT OF TRANSPORTATION
DETAILS

FAP ROUTE VARIOUS
 SECTION: DIST. 8 TS MODIFICATIONS 2006-1
 COUNTIES: ST. CLAIR & MADISON

SCALE: VERT. DATE DRAWN BY CHECKED BY
 HORIZ. DATE

PLT DATE = 11/16/2005
 FILE NAME = c:\noms\mca\ed\90205\electrical\upl\090205.dgn
 REFERENCE = #REF#