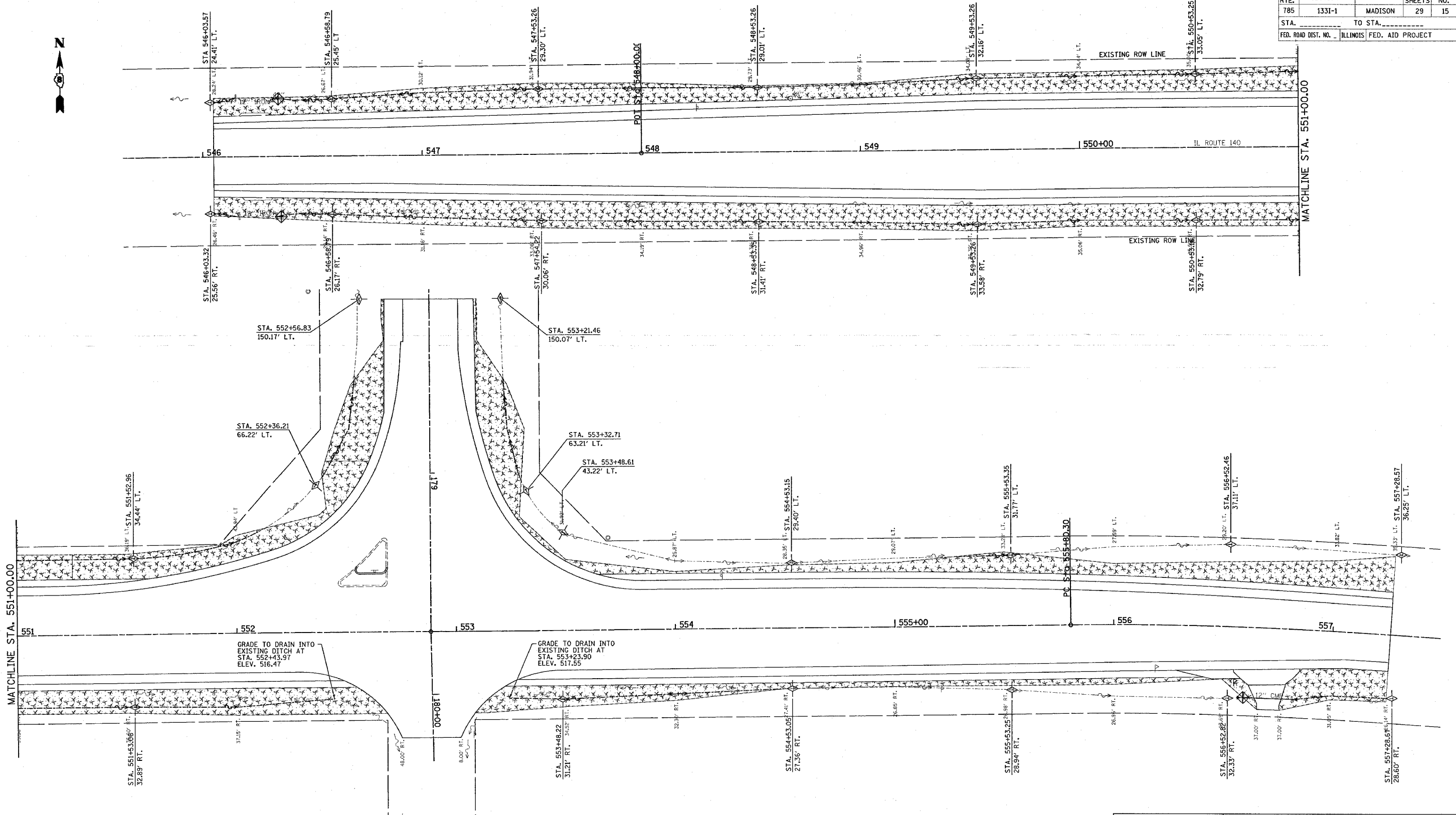


F.A.P. SECTION	COUNTY	TOTAL SHEETS	SHEET NO.
785 133I-1	MADISON	29	15
STA. TO STA.			
FED. ROAD DIST. NO. ILLINOIS		FED. AID PROJECT	



MATCHLINE STA. 551+00.00

MATCHLINE STA. 551+00.00

GRADE TO DRAIN INTO EXISTING DITCH AT STA. 552+43.97 ELEV. 516.47

GRADE TO DRAIN INTO EXISTING DITCH AT STA. 553+23.90 ELEV. 517.55

LEGEND

- SEEDING, FERTILIZER AND MULCH AREA
- INLET AND PIPE PROTECTION
- TEMPORARY DITCH CHECK

REVISIONS	
NAME	DATE

ILLINOIS DEPARTMENT OF TRANSPORTATION
EROSION AND SEDIMENT CONTROL PLAN
 FAP ROUTE 785 (IL 140)
 SECTION 133I-1
 MADISON COUNTY

SCALE: VERT. _____
 HORIZ. _____

DATE _____ DRAWN BY _____
 CHECKED BY _____

PLOT DATE = 12/22/2005
 PLOT NAME = d:\p0885\plan\p0885.dgn
 PLOT SCALE = 20.0000" / IN.
 REFERENCE = *REF*