

F.A.U. RTE.	SECTION	COUNTY	TOTAL SHEETS	SHEET NO.
05-00180-00-BR	COOK	14	1	
STA.	TO STA.			
FED. ROAD DIST. NO. 7	ILLINOIS	FED. AID PROJECT		
CONTRACT NO. 83822				

**INDEX OF SHEETS**

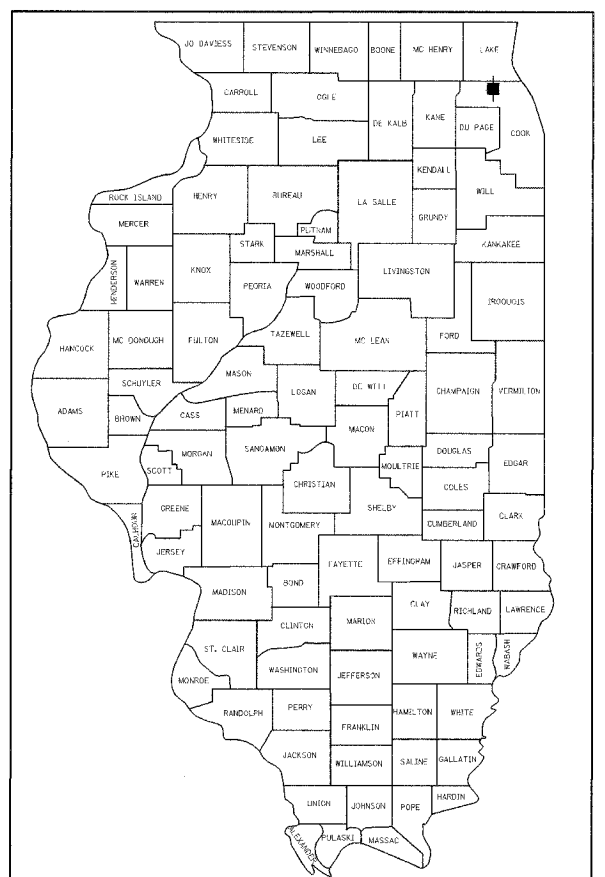
- 1 TITLE SHEET
- 2 GENERAL NOTES, LISTING OF HIGHWAY STANDARDS AND SEQUENCE OF OPERATIONS
- 3-4 SUMMARY OF QUANTITIES
- 5 PLAN, SIGNING AND PAVEMENT MARKING
- 6 DRAINAGE & UTILITIES AND LIGHTING
- 7 GRADING DETAILS
- 8 CONSTRUCTION DETAILS
- 9 LIGHT POLE FOUNDATION
- 10 CULVERT GENERAL PLAN & ELEVATION
- 11 CULVERT DETAILS
- 12 RAILING DETAILS
- 13 BORING LOGS
- 14 STORM SEWER CONNECTION TO EXISTING SEWER (BD 07)

**STATE OF ILLINOIS**  
**DEPARTMENT OF TRANSPORTATION**  
**DIVISION OF HIGHWAYS**

**PROPOSED PLANS FOR A**  
**FEDERAL AID HIGHWAY**  
**PEDESTRIAN CULVERT UNDER THE UNION PACIFIC RAILROAD**  
**AT NORTHWEST HIGHWAY (U.S. ROUTE 14) AND KENSINGTON ROAD**  
**SECTION NO. 05-00180-00-BR**  
**PROJECT NO. CMM-8003 (546)**  
**CULVERT CONSTRUCTION**  
**COOK COUNTY**  
**JOB NO. C-91-072-06**

**DESCRIPTION OF IMPROVEMENT**

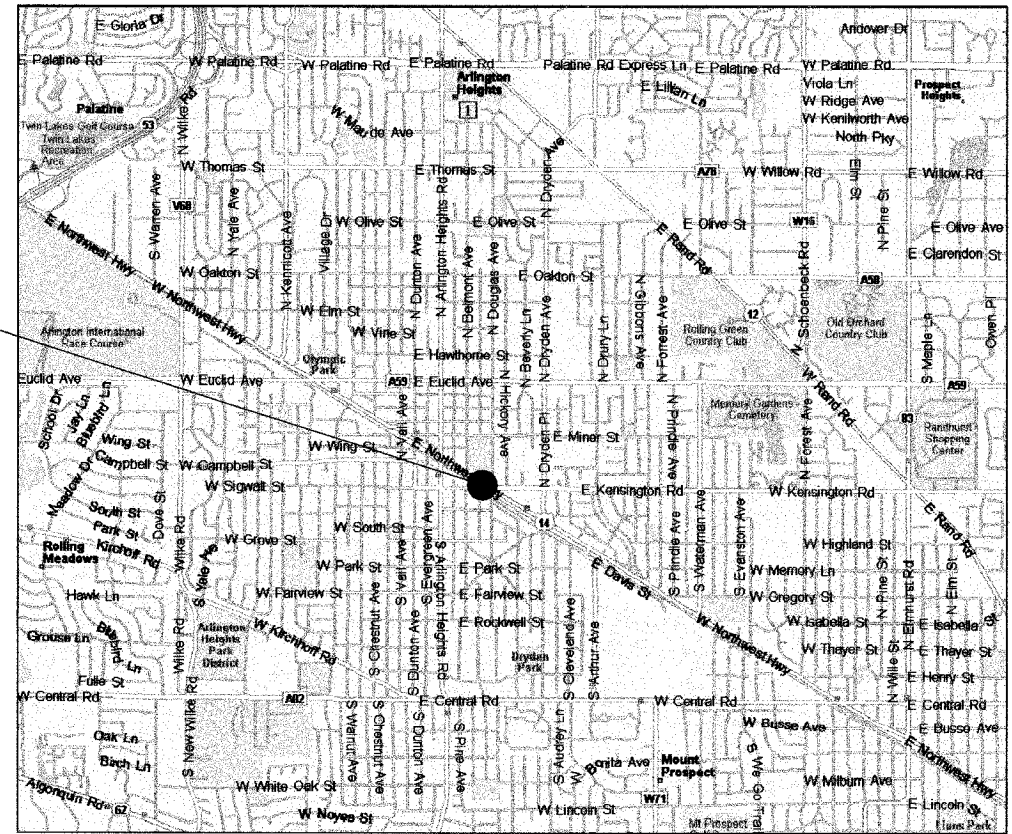
THIS IMPROVEMENT CONSISTS OF EARTH EXCAVATION, REINFORCED CONCRETE BOX CULVERT CONSTRUCTION, SIDEWALK REMOVAL AND REPLACEMENT, LIGHTING INFRASTRUCTURE, LANDSCAPING AND ALL INCIDENTAL AND COLLATERAL WORK AS NECESSARY TO COMPLETE THE IMPROVEMENT SHOWN HEREIN AND AS DESCRIBED IN THE SPECIFICATIONS.



LOCATION OF SECTION INDICATED THUS: —■—

PROJECT IS LOCATED IN THE VILLAGE OF ARLINGTON HEIGHTS

**PROJECT LOCATION**  
 PEDESTRIAN CULVERT  
 STATION 50+00.00  
 DOT NO. 176922D  
 MP 22.05 - HARVARD SUBDIVISION

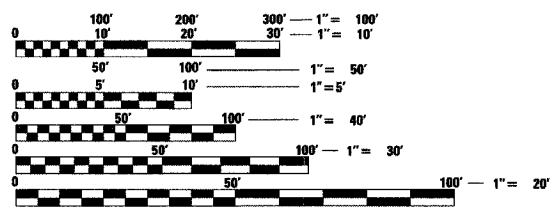


**LOCATION MAP**  
 ARLINGTON HEIGHTS  
 COOK COUNTY, ILLINOIS  
 PROJECT LENGTH = 400 FEET (0.08 MILES)



IDOT FEDERAL AID DESIGN ENGINEER  
 JESSICA MILLER (847) 705-4487

CONSULTANT  
 TRANSSYSTEMS CORPORATION (847) 605-0600  
 1051 PERIMETER DRIVE, SCHALMUR, IL 60173  
 11/12/2005 8:48:42 AM  
 91'CH03\018B\Road\TH16.sht



FULL SIZE PLANS HAVE BEEN PREPARED USING STANDARD ENGINEERING SCALES. REDUCED SIZED PLANS WILL NOT CONFORM TO STANDARD SCALES. IN MAKING MEASUREMENTS ON REDUCED PLANS, THE ABOVE SCALES MAY BE USED.

**J.U.L.I.E.**  
 JOINT UTILITY LOCATION INFORMATION FOR EXCAVATION  
 1-800-892-0123

**CONTRACT NO. 83822**

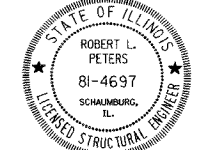
**STATE OF ILLINOIS**  
**DEPARTMENT OF TRANSPORTATION**  
**DIVISION OF HIGHWAYS**

APPROVED 1 Nov 05 2005  
*Robert L. Peters, P.E.*  
 VILLAGE OF ARLINGTON HEIGHTS, DEPUTY DIRECTOR PUBLIC WORKS

APPROVED NOVEMBER 18 2005  
*Scott D. Czaplacki*  
 ENGINEER OF LOCAL ROADS AND STREETS

APPROVED Nov. 18 2005  
*Diane M. O'Keefe /s/*  
 DEPUTY DIRECTOR OF HIGHWAYS, REGION ENGINEER

**PRINTED BY THE AUTHORITY**  
**OF THE STATE OF ILLINOIS**



*Robert L. Peters 11/18/05*  
 TRANSSYSTEMS CORPORATION  
 ROBERT L. PETERS, PE, SE  
 NO. 081-04697  
 EXP. DATE 11/30/06

*Scott D. Czaplacki 11-1-05*  
 TRANSSYSTEMS CORPORATION  
 SCOTT D. CZAPLACKI, PE  
 NO. 062-053236  
 EXP. DATE 11/30/07