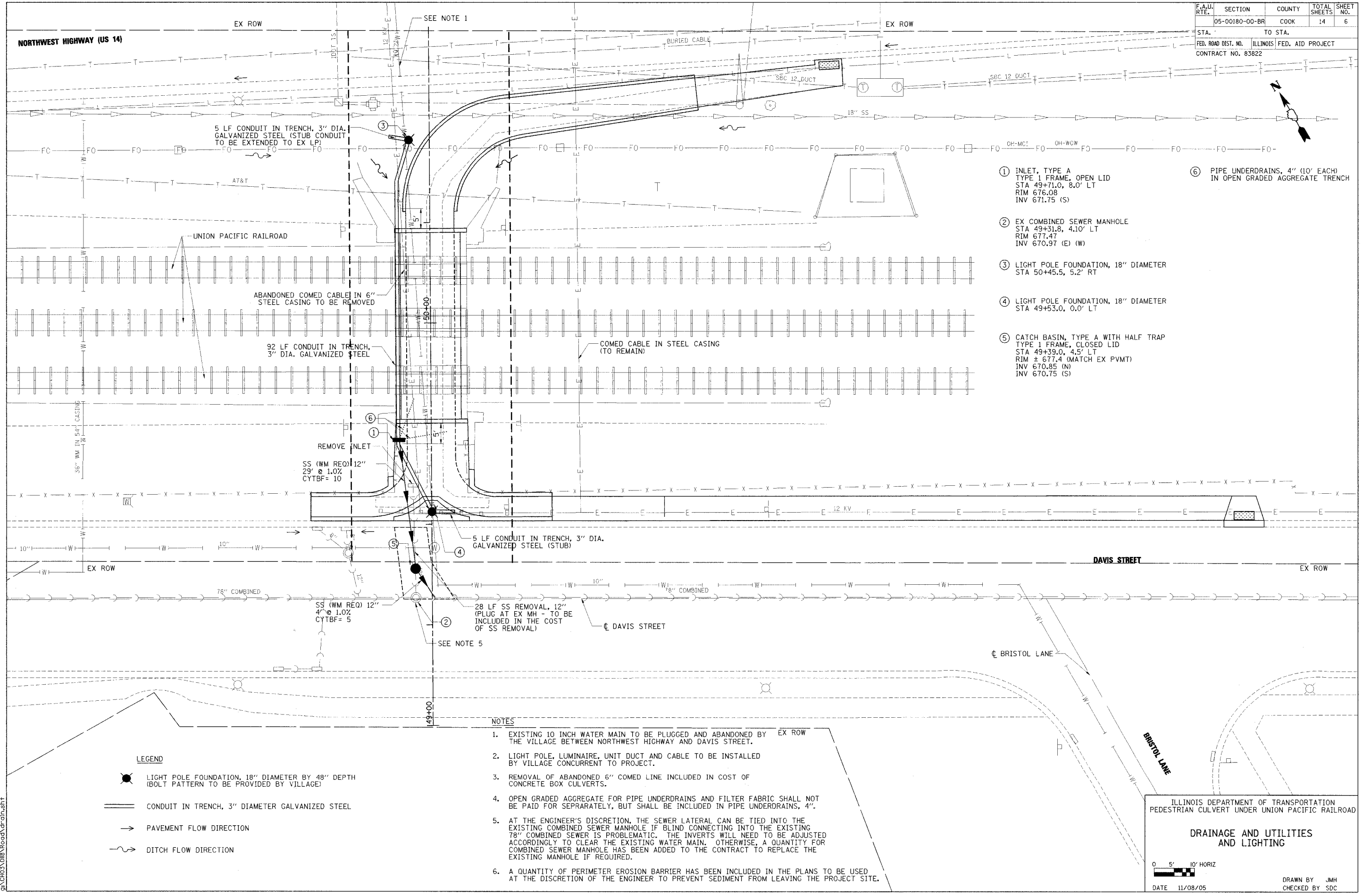


| | | | | |
|---------------------|----------|------------------|--------------|-----------|
| F.A.U. RTE. | SECTION | COUNTY | TOTAL SHEETS | SHEET NO. |
| 05-00180-00-BR | | COOK | 14 | 6 |
| STA. | TO STA. | | | |
| FED. ROAD DIST. NO. | ILLINOIS | FED. AID PROJECT | | |
| CONTRACT NO. 83822 | | | | |



- ① INLET, TYPE A TYPE 1 FRAME, OPEN LID
STA 49+71.0, 8.0' LT
RIM 676.08
INV 671.75 (S)
- ② EX COMBINED SEWER MANHOLE
STA 49+31.8, 4.10' LT
RIM 677.47
INV 670.97 (E) (W)
- ③ LIGHT POLE FOUNDATION, 18" DIAMETER
STA 50+45.5, 5.2' RT
- ④ LIGHT POLE FOUNDATION, 18" DIAMETER
STA 49+53.0, 0.0' LT
- ⑤ CATCH BASIN, TYPE A WITH HALF TRAP
TYPE 1 FRAME, CLOSED LID
STA 49+39.0, 4.5' LT
RIM = 677.4 (MATCH EX PVMT)
INV 670.85 (N)
INV 670.75 (S)
- ⑥ PIPE UNDERDRAINS, 4" (10' EACH)
IN OPEN GRADED AGGREGATE TRENCH

- LEGEND**
- LIGHT POLE FOUNDATION, 18" DIAMETER BY 48" DEPTH (BOLT PATTERN TO BE PROVIDED BY VILLAGE)
 - CONDUIT IN TRENCH, 3" DIAMETER GALVANIZED STEEL
 - PAVEMENT FLOW DIRECTION
 - DITCH FLOW DIRECTION

- NOTES**
1. EXISTING 10 INCH WATER MAIN TO BE PLUGGED AND ABANDONED BY THE VILLAGE BETWEEN NORTHWEST HIGHWAY AND DAVIS STREET.
 2. LIGHT POLE, LUMINAIRE, UNIT DUCT AND CABLE TO BE INSTALLED BY VILLAGE CONCURRENT TO PROJECT.
 3. REMOVAL OF ABANDONED 6" COMED LINE INCLUDED IN COST OF CONCRETE BOX CULVERTS.
 4. OPEN GRADED AGGREGATE FOR PIPE UNDERDRAINS AND FILTER FABRIC SHALL NOT BE PAID FOR SEPARATELY, BUT SHALL BE INCLUDED IN PIPE UNDERDRAINS, 4".
 5. AT THE ENGINEER'S DISCRETION, THE SEWER LATERAL CAN BE TIED INTO THE EXISTING COMBINED SEWER MANHOLE IF BLIND CONNECTING INTO THE EXISTING 78" COMBINED SEWER IS PROBLEMATIC. THE INVERTS WILL NEED TO BE ADJUSTED ACCORDINGLY TO CLEAR THE EXISTING WATER MAIN. OTHERWISE, A QUANTITY FOR COMBINED SEWER MANHOLE HAS BEEN ADDED TO THE CONTRACT TO REPLACE THE EXISTING MANHOLE IF REQUIRED.
 6. A QUANTITY OF PERIMETER EROSION BARRIER HAS BEEN INCLUDED IN THE PLANS TO BE USED AT THE DISCRETION OF THE ENGINEER TO PREVENT SEDIMENT FROM LEAVING THE PROJECT SITE.

ILLINOIS DEPARTMENT OF TRANSPORTATION
PEDESTRIAN CULVERT UNDER UNION PACIFIC RAILROAD

DRAINAGE AND UTILITIES AND LIGHTING

0 5' 10' HORIZ

DATE 11/08/05

DRAWN BY JMH
CHECKED BY SDC

11/13/2005 7:22:55 AM
9:\CH03\018\Road\drain.sht

9:\CH03\018\Road\drain.sht 11/13/2005 7:22:55 AM