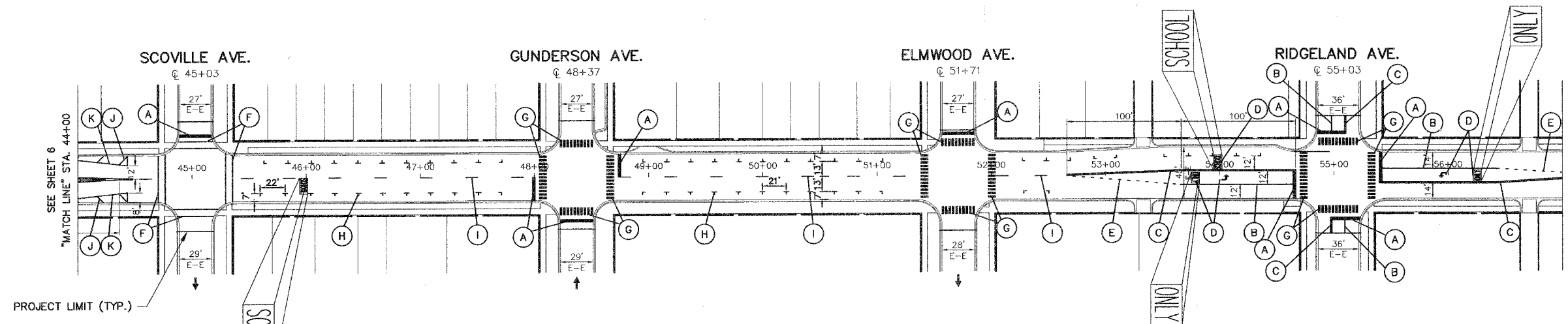


FAU RTE	SECTION	COUNTY	TOTAL SHEETS	SHEET NO.
1447	03-00159-00-RS	COOK	24	18
F. HW. A. REG.	ILLINOIS	PROJECT STPM-8003(581)		

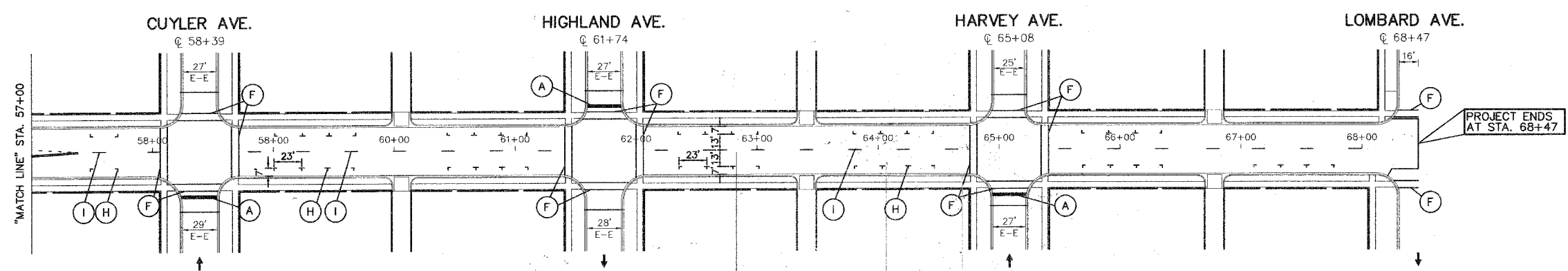
CONTRACT NO. 83835



**STRIPING LEGEND**

- (A) SOLID WHITE THERMOPLASTIC STOP LINE, 24" WIDTH
- (B) SOLID WHITE THERMOPLASTIC LINE, 6" WIDTH
- (C) DOUBLE SOLID YELLOW THERMOPLASTIC CENTER, 4" WIDTH AT 11" CENTER TO CENTER
- (D) SOLID WHITE THERMOPLASTIC LETTERS AND SYMBOLS
- (E) SOLID WHITE THERMOPLASTIC SKIP DASH 6" WIDTH, 2' DASH 6" SKIP
- (F) SOLID WHITE THERMOPLASTIC CROSSWALK LINE, 6" WIDTH, 6 FEET APART
- (G) SOLID WHITE THERMOPLASTIC CROSSWALK BARS, 12" WIDTH, 2 FEET APART
- (H) SOLID WHITE THERMOPLASTIC PARKING STALL MARKING, 4" WIDTH, 12" x 6" "T"
- (I) SOLID YELLOW THERMOPLASTIC SKIP DASH CENTER 4" WIDTH 10' LONG AT 30 FOOT INTERVALS
- (J) SOLID WHITE THERMOPLASTIC LINE, 45° DIAGONAL, 12" WIDTH, 14' APART
- (K) SOLID WHITE THERMOPLASTIC LINE, 8" WIDTH
- (L) SOLID YELLOW THERMOPLASTIC LINE, 45° DIAGONAL, 12" WIDTH, 8' APART
- (M) SOLID WHITE THERMOPLASTIC LINE, 45° DIAGONAL, 6" WIDTH

**IMPORTANT!**  
 FULL SIZE PLANS HAVE BEEN PREPARED USING STANDARD ENGINEERING SCALES. REDUCED SIZED PLANS WILL NOT CONFORM TO STANDARD SCALES INDICATED IN TITLE BLOCK.



**Frank Novotny & Associates, Inc.**  
 Civil Engineers/Municipal Consultants  
 825 Midway Drive • Willowbrook, IL • 60527 • Telephone: (630) 887-8640 • Fax: (630) 887-0132  
 Illinois Professional Design Firm No. 184-000928

PROJECT  
**CITY OF BERWYN, ILLINOIS**  
**16TH STREET RESURFACING**  
**SECTION NO. 03-000159-00-RS**

REVISIONS			
NO.	BY	DATE	DESCRIPTION
1	THK	11/30/05	PER IDOT DIST. 1 B.L.R. COMMENTS
2	THK	12/14/05	PER IDOT DIST. 1 B.L.R. COMMENTS
3	THK	12/16/05	PER IDOT DIST. 1 B.L.R. COMMENTS

**STRIPING & DETECTOR LOOP REPLACEMENT**  
 16TH STREET  
 STA. 44+00 TO LOMBARD AVE.

PROJECT NO. 02260	SCALE 1"=50'	SHEET 18
DRAWN/DESIGNED JEP-RAW/THK	DATE OCT., 2005	OF 24
CHECKED/APPROVED JEF	FIELD BOOK NO. FILE	SHEETS

M:\S\Berwyn\2002\02260 - 18th - ST - L.A.P.\02260\_S11\_05-09\_PowerPlan 10 14\_Draining\15\_Draining\15\_Striping.dwg, 12/20/2005 1:25:13 PM