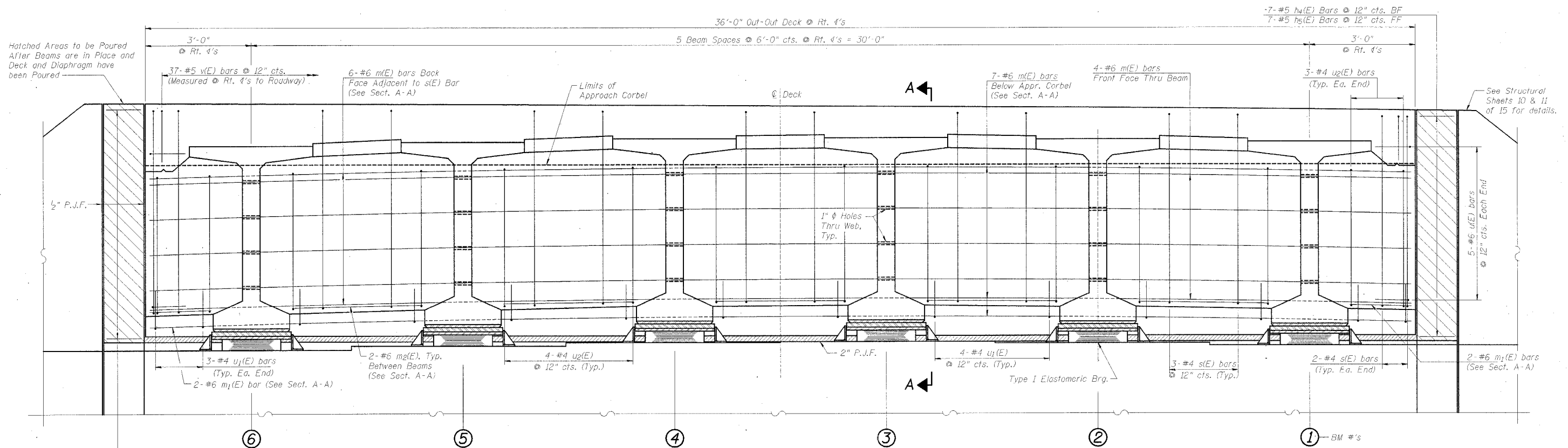
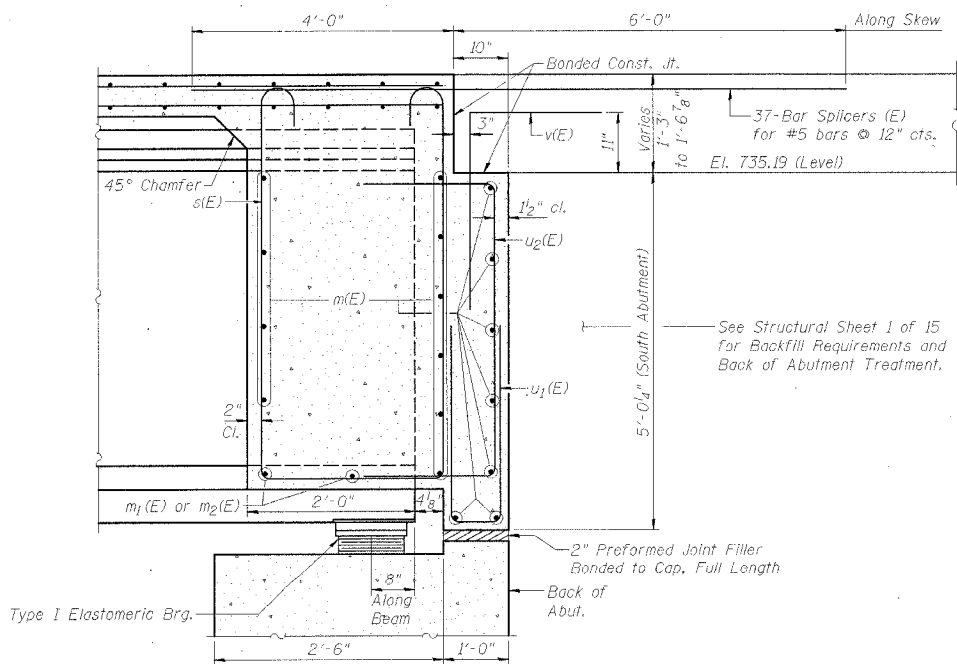


ROUTE NO.	SECTION	COUNTY	TOTAL SHEETS	SHEET NO.
PA	01-00282-00-BR	LEE	51	18
FED. ROAD DIST. NO. 7		ILL. ROAD	FED. AID PROJECT	

STRUCTURAL SHEET 4 OF 15



**DIAPHRAGM AT ABUTMENT**  
(South Abutment Looking South)



**SECTION A-A**  
(Dim. at Rt. L's except as noted)

SIZE	MIN. LAP
#4	1'-8"
#5	2'-2"
#6	2'-7"
#7	3'-5"
#8	4'-6"

**NOTES:**

All Exposed Edges shall have 3/4" Chamfer Except as Noted.

For Bill of Materials See Structural Sheet 3 of 15.

Place s(E) Bars and u<sub>2</sub>(E) Bars Parallel to Beams and Space at Right Angles to Beams.

**SUPERSTRUCTURE DETAILS @ S. ABUT.**  
SECTION 01-00282-00-BR  
ROCKYFORD ROAD over GREEN RIVER  
STA. 20+00 (S.N. 052-3512)  
LEE COUNTY  
WHA # 1154D03