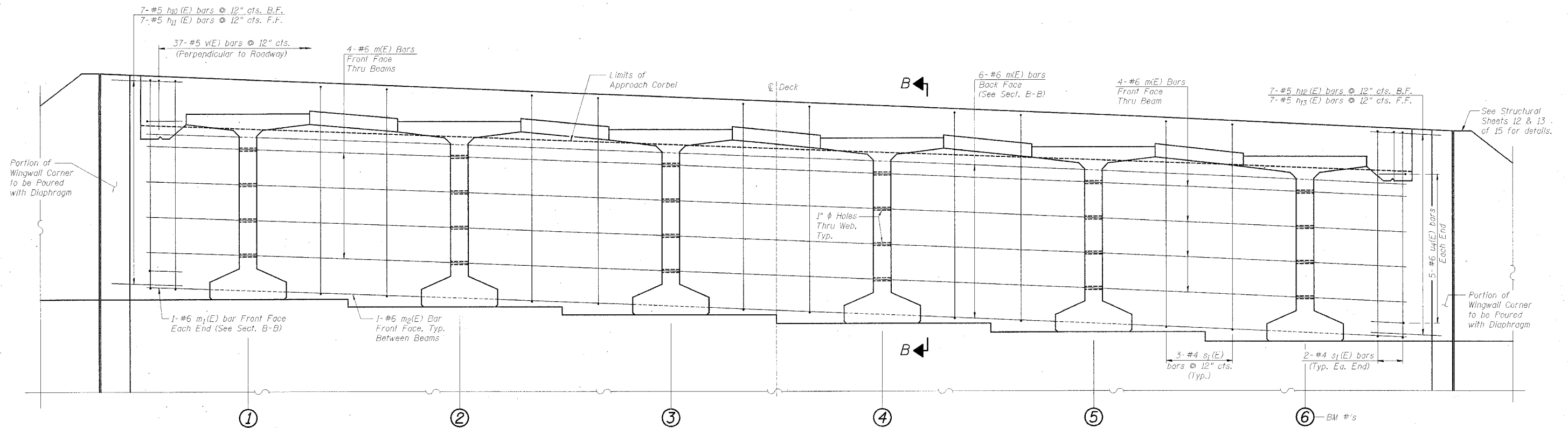
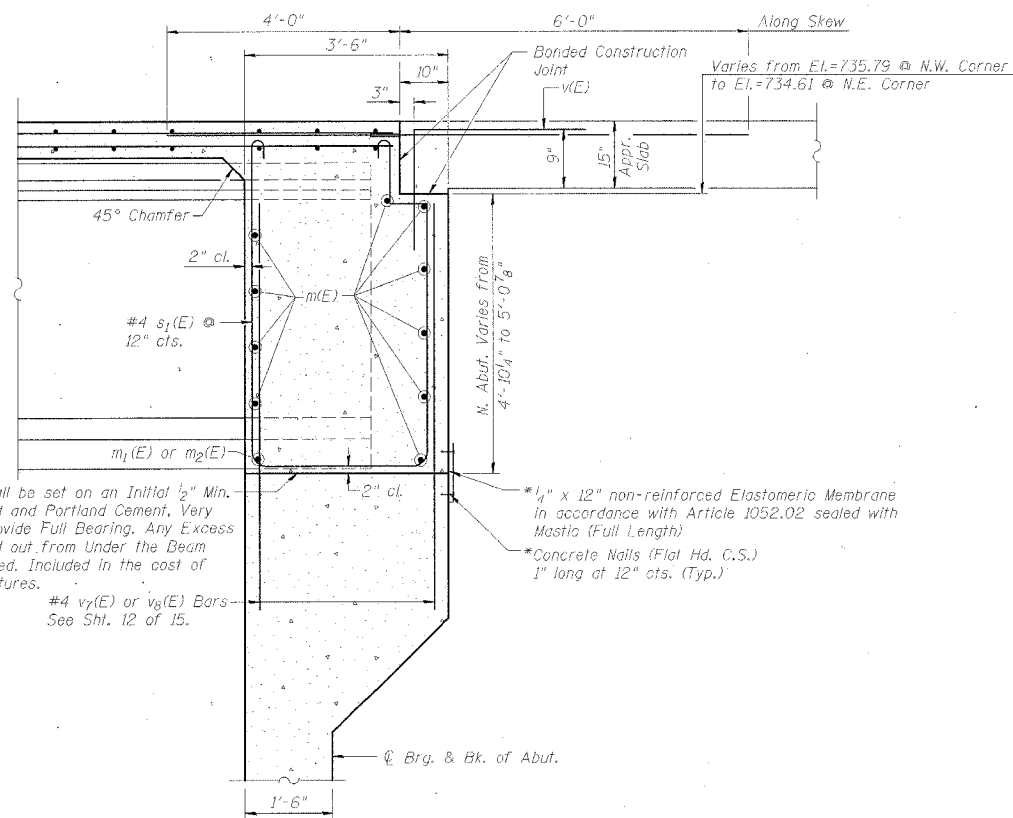


ROUTE NO.	SECTION	COUNTY	TOTAL SHEETS	SHEET NO.
FA. 100	01-00282-00-BR	LEE	51	19
FED. ROAD DIST. NO. 7		CLASS	FED. AID PROJECT	

STRUCTURAL SHEET 5 OF 15



DIAPHRAGM AT ABUTMENT
(North Abutment Looking North)



SECTION B-B

(Dim. at Rt. L.s except as noted)

*Cost incidental to Concrete Structure

SIZE	MIN. LAP
#4	1'-8"
#5	2'-2"
#6	2'-7"
#7	3'-5"
#8	4'-6"

NOTES:

All Exposed Edges shall have 3/4" Chamfer Except as Noted.
For Bill of Materials See Structural Sheet 3 of 15.

SUPERSTRUCTURE DETAILS • N. ABUT
SECTION 01-00282-00-BR
ROCKYFORD ROAD over GREEN RIVER
STA. 20+00 (S.N. 052-3512)
LEE COUNTY
WHA # 1154003