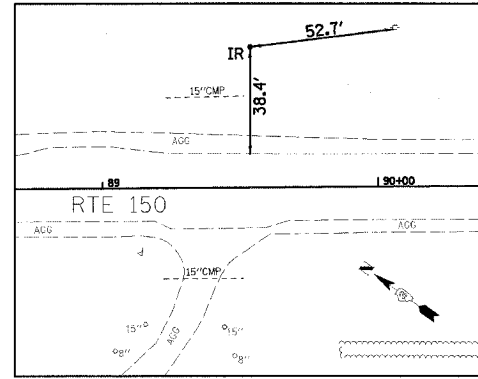
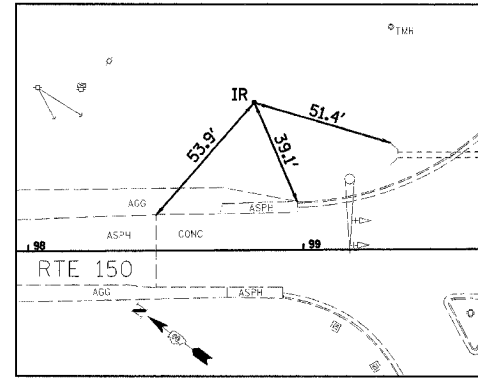


F.A.U. RTE.	SECTION	COUNTY	TOTAL SHEETS	SHEET NO.
*	**	McLEAN	34	4
STA.		TO STA.		
FED. ROAD DIST. NO.		ILLINOIS FED. AID PROJECT		

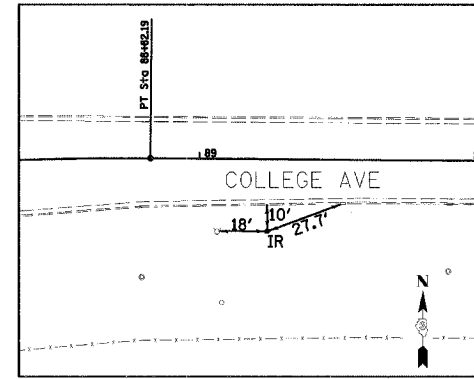
* 6352 - COLLEGE AVENUE
 6395 - WHITE OAK ROAD (C.H. 7D)
 ** 03-00182-00-RS



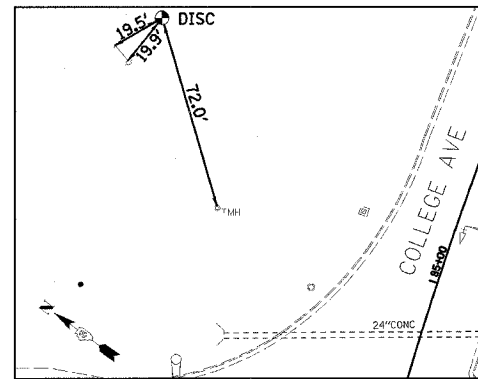
CONTROL TIE #101
 STA 89+53.82, 50.54' LT
 IRON ROD



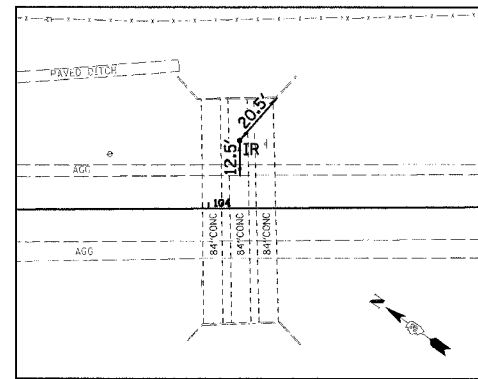
CONTROL TIE #100
 STA 98+82.45, 53.32' LT
 IRON ROD



CONTROL TIE #5
 STA 89+24.84, 26.13' RT
 IRON ROD



CONTROL TIE #1588
 STA 85+54.48, 126.34' LT
 DISC



CONTROL TIE #4
 STA 104+11.48, 24.49' LT
 IRON ROD

ALIGNMENT COORDINATES		
STATION	NORTHING	EASTING
88+00 (WHITE OAK RD)	10,913.12	8,438.75
99+95.68 (WHITE OAK RD)	9,950.29	9,147.71
110+99.31 (WHITE OAK RD)	9,061.11	9,801.43
76+41.13 (COLLEGE AVE PC)	9,446.64	8,540.60
83+23.84 (COLLEGE AVE PI)	10,031.03	8,893.58
88+82.19 (COLLEGE AVE PT)	10,026.19	9,576.28

PROP. CURVE COLLEGE AVE
 PI STA. = 83+23.84
 $\Delta = 59^\circ 16' 25''$ (RT)
 $D = 4^\circ 46' 34''$
 $R = 1,200.00'$
 $T = 682.71'$
 $L = 1,241.06'$
 $E = 180.62'$
 P.C. STA = 76+41.13
 P.T. STA = 88+82.19

POINT #	NORTHING	EASTING	STATION	OFFSET
101	10,819.22	8,570.66	89+53.82	-50.54
100	10,073.08	9,123.51	98+82.45	-53.32
5	9,999.76	9,618.74	102+34.84	-408.81
1588	10,105.89	9,219.01	99+12.66	-149.67
4	9,629.79	9,413.74	104+11.48	-24.49

BENCHMARKS:

"□" ON CENTER HEADWALL ON N SIDE COLLEGE AVENUE @ NE COR COLLEGE & RTE 150
 ELEV=783.04

TOP OF FIRE HYDRANT 2nd E OF RTE 150 (300'±)
 S SIDE COLLEGE AVENUE
 ELEV=781.63

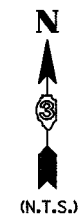
P.K. NAIL IN POWER POLE 1st POLE S OF BRICK HOUSE #235 RTE 150 (WHITE OAK RD)
 ELEV=797.83

"□" E END OF HEADWALL 600'± W OF I-55
 S SIDE OF COLLEGE AVENUE
 ELEV=776.73

"□" S END OF HEADWALL FOR TRIPLE 84" CULVERT
 E SIDE RTE 150 (WHITE OAK RD) 300'± S OF COLLEGE AVENUE
 ELEV=774.99

EX P.K. NAIL IN E FACE OF POWER POLE 500'± N OF COLLEGE AVENUE E SIDE RTE 150 (WHITE OAK RD)
 ELEV=791.60

EX P.K. NAIL IN POWER POLE E SIDE RTE 150 (WHITE OAK RD) 3rd POLE N OF HOUSE #235 RTE 150 (WHITE OAK RD)
 ELEV=801.79



McLEAN CO SECTION 03-00182-00-RS
 COLLEGE AVENUE & WHITE OAK ROAD WIDENING

SURVEY CONTROL TIES & BENCHMARKS

DRAWN BY J.OCHSNER	<p>2708 Andrew Drive Bloomington, Illinois 61704 309.892-8435 / fax 309.892-1671</p>	FILE NO. 24-7482
DATE 03/08/05		BOOK NO. 2704
CHECKED BY RCD		SHEET NO.