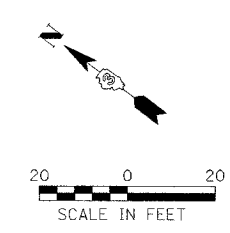
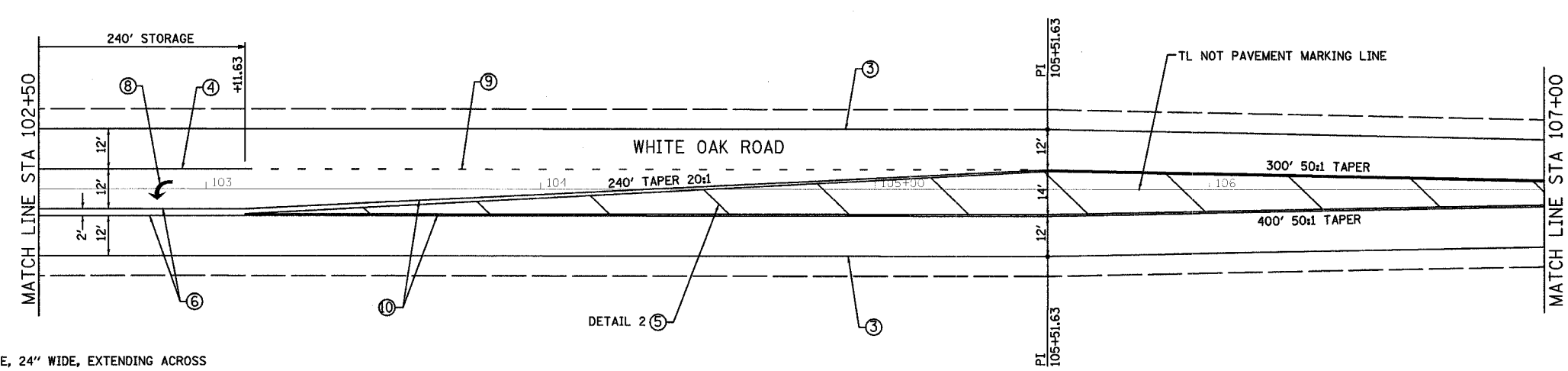
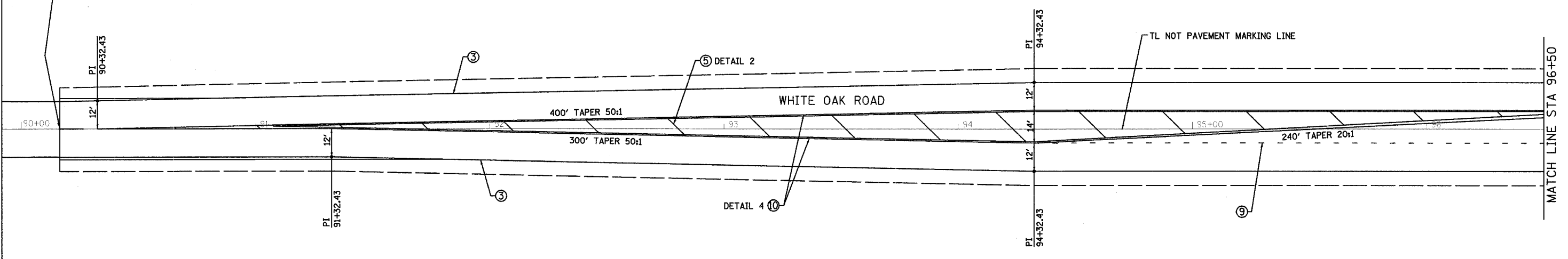


F.A.U. RTE.	SECTION	COUNTY	TOTAL SHEETS	SHEET NO.
*	**	McLEAN	34	20
STA.	TO STA.			
FED. ROAD DIST. NO.	ILLINOIS FED. AID PROJECT			
* 6352 - COLLEGE AVENUE				
* 6385 - WHITE OAK ROAD (C.H. 70)				
** 03-00182-00-RS				

STA 90+16.41 AHEAD=  
STA 716+77.02 BACK

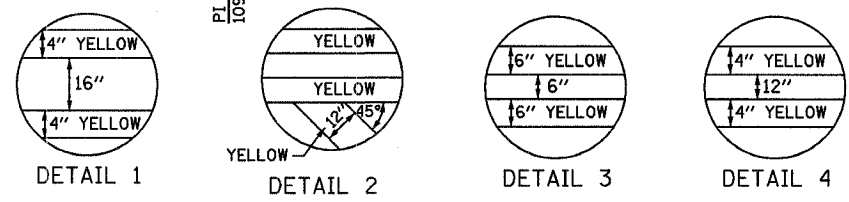
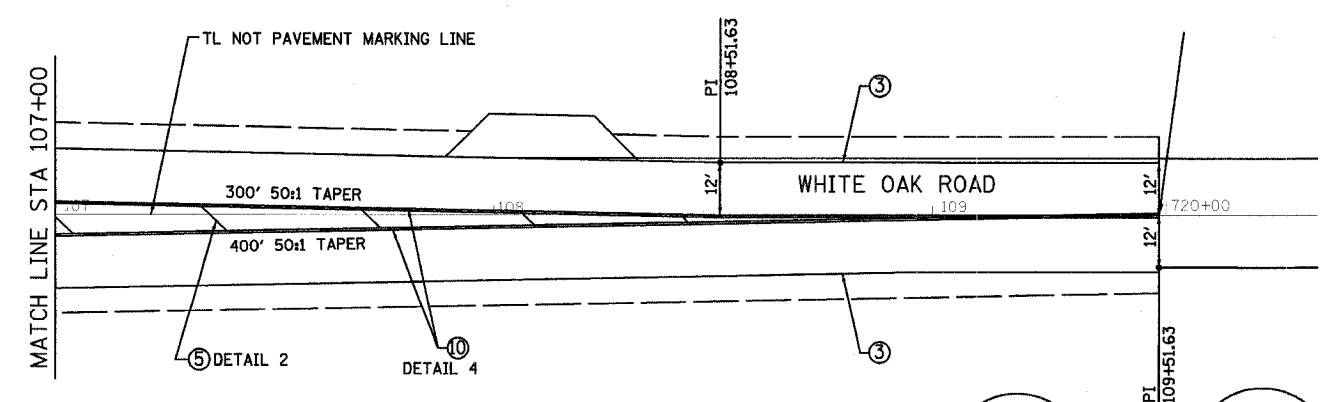


NOTES:

- STOP LINES ARE SOLID WHITE, 24" WIDE, EXTENDING ACROSS ALL APPROACH LANES
- PAVEMENT MARKING LINES SHALL NOT BE LAID DIRECTLY OVER A LONGITUDINAL CRACK, OR JOINT, NOR OVER A TAR OR ASPHALT PAINTED LINE. THE EDGES OF CENTERLINE OR LANE LINES SHALL BE OFFSET A MINIMUM OF TWO INCHES FROM A LONGITUDINAL CRACK OR JOINT.
- EXISTING RAISED REFLECTIVE PAVEMENT MARKERS IN CONFLICT ON COLLEGE AVENUE SHALL BE REMOVED.
- NOT ALL PROPOSED RAISED REFLECTIVE PAVEMENT MARKERS ARE SHOWN ON THIS PLAN. THE MARKERS SHALL BE PLACED IN ACCORDANCE WITH STANDARD 781001.

LEGEND

- 1- WHITE THERMOPLASTIC STOP BAR PAVEMENT MARKING LINE - 24" SOLID
- 2- YELLOW PAINT PAVEMENT MARKING LINE - 4" SOLID
- 3- WHITE THERMOPLASTIC PAVEMENT MARKING LINE - 4" SOLID
- 4- WHITE THERMOPLASTIC PAVEMENT MARKING LINE - 8" SOLID
- 5- YELLOW THERMOPLASTIC PAVEMENT MARKING LINE - 12" (ON 45° ANGLE, 20' CTC)
- 6- DOUBLE YELLOW THERMOPLASTIC PAVEMENT MARKING LINE - 4" SOLID
- 7- WHITE PAINT PAVEMENT MARKING LINE - 10' LONG, 30' GAP - 4"
- 8- THERMOPLASTIC PAVEMENT MARKING, LETTERS AND SYMBOLS (FOR LEFT AND RIGHT TURN LANE ONE ARROW 20' FROM FRONT OF STORAGE AND ONE ARROW 20' FROM BACK OF STORAGE)
- 9- WHITE THERMOPLASTIC PAVEMENT MARKING LINE - 8" (2' LONG, 6' GAP)
- 10- DOUBLE YELLOW THERMOPLASTIC PAVEMENT MARKING LINE - 4" SOLID
- 11- DOUBLE YELLOW THERMOPLASTIC PAVEMENT MARKING LINE - 6" SOLID
- 12- PAINT PAVEMENT MARKING, LETTERS AND SYMBOLS
- 13- WHITE THERMOPLASTIC PAVEMENT MARKING LINE - 12"
- 14- WHITE THERMOPLASTIC PAVEMENT MARKING LINE - 16"
- ▲ ONE-WAY AMBER RAISED REFLECTIVE PAVEMENT MARKER
- ◄ ONE-WAY CRYSTAL RAISED REFLECTIVE PAVEMENT MARKER
- ◆ TWO-WAY AMBER RAISED REFLECTIVE PAVEMENT MARKER



McLEAN CO SECTION 03-00182-00-RS  
COLLEGE AVENUE & WHITE OAK ROAD WIDENING

PAVEMENT MARKING PLAN

DRAWN BY J. OCHSNER	DATE 03/08/05	CHECKED BY RCD	FILE NO. 24-7482	BOOK NO. 2704	SHEET NO.
------------------------	------------------	-------------------	---------------------	------------------	-----------

**Farnsworth GROUP**  
2709 McGraw Drive  
Bloomington, Illinois 61704  
808.868-8486 / fax 808.868-1571