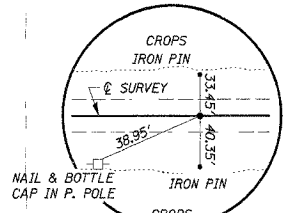


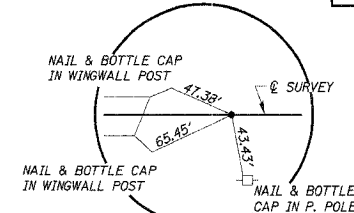
S.E. 1/4 SEC. 3, T.14 N., R. 7 E., 4TH P.M.
DOUGLAS A. & SANDRA C. MILBY

ROUTE	SECTION	COUNTY	TOTAL SHEETS	SHEET NO.
C.H. 20	04-00153	STARK	13	3
STA. 10+00.00	TO STA. 15+99.89	ILLINOIS		

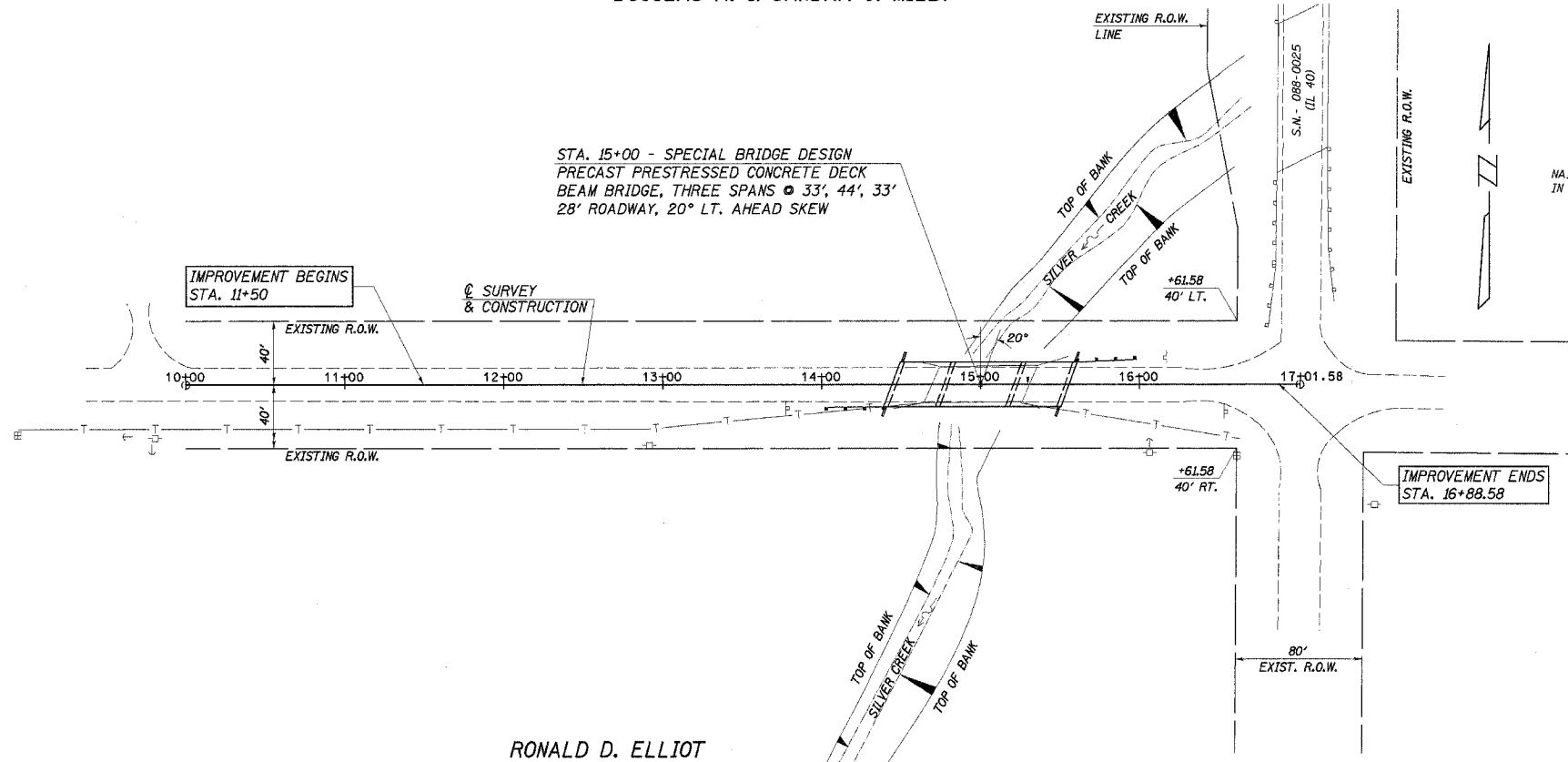
CONTRACT NO. 89364



P.O.T. STA. 10+00.00
IRON PIN (FLUSH)



P.O.T. STA. 15+99.89
IRON PIN (FLUSH)



EXISTING STRUCTURE - S.N. 088-3308

SINGLE SPAN CONCRETE DECK BRIDGE ON STEEL BEAMS WITH CLOSED TIMBER ABUTMENTS AND TIMBER WINGS. 63'-0" BK.-BK. ABUTMENTS, 24' 0.-0., 25° LT. FORWARD SKEW

REMOVAL OF EXISTING STRUCTURES = 1 EACH

OVERHEAD POWER

AMEREN CILCO
DEBORAH DANN
309-693-4762

BURIED CABLE

VERIZON NORTH, INC.
JONNA FRICKE
309-663-3422

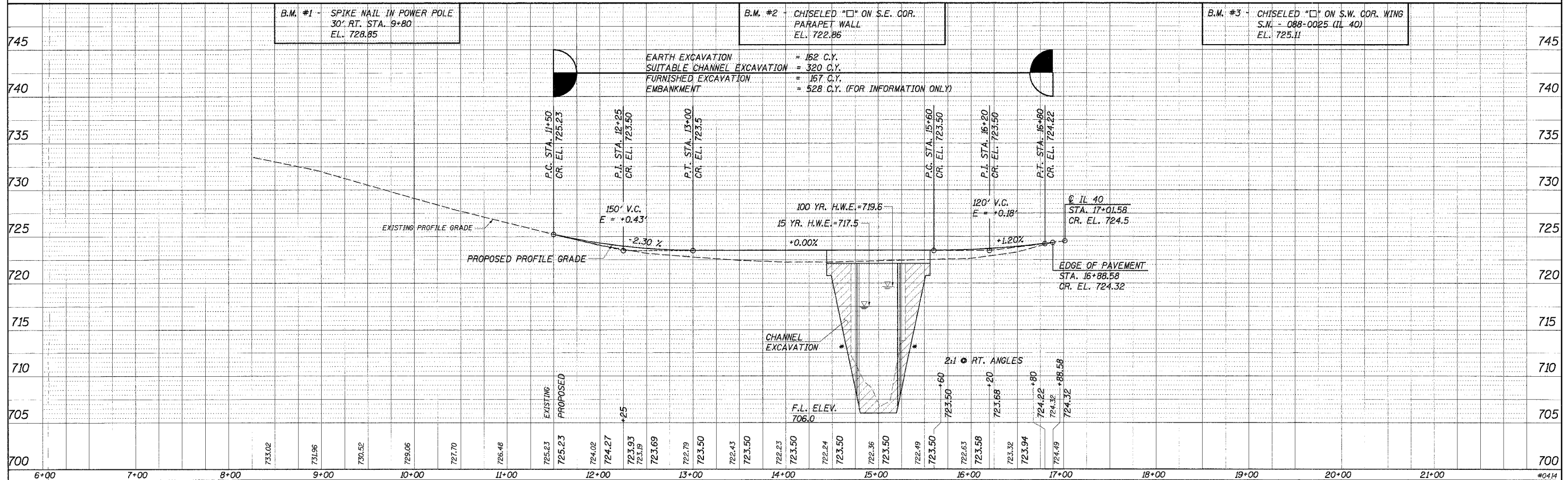
CHANNEL EXCAVATION

THE CHANNEL SHALL BE EXCAVATED AS SHOWN WITHIN THE LIMITS OF THE PROPOSED STRUCTURE THEN TAPER TO THE EXISTING CHANNEL AT THE R.O.W. LINES. SUITABLE EXCAVATED MATERIAL TO BE USED IN THE EMBANKMENT AS DIRECTED BY THE ENGINEER.

CHANNEL EXCAVATION = 640 CU. YD.

RONALD D. ELLIOT

N.E. 1/4 SEC. 10, T. 14 N., R. 7 E., 4TH P.M.



DATE	BY

DATE	BY