

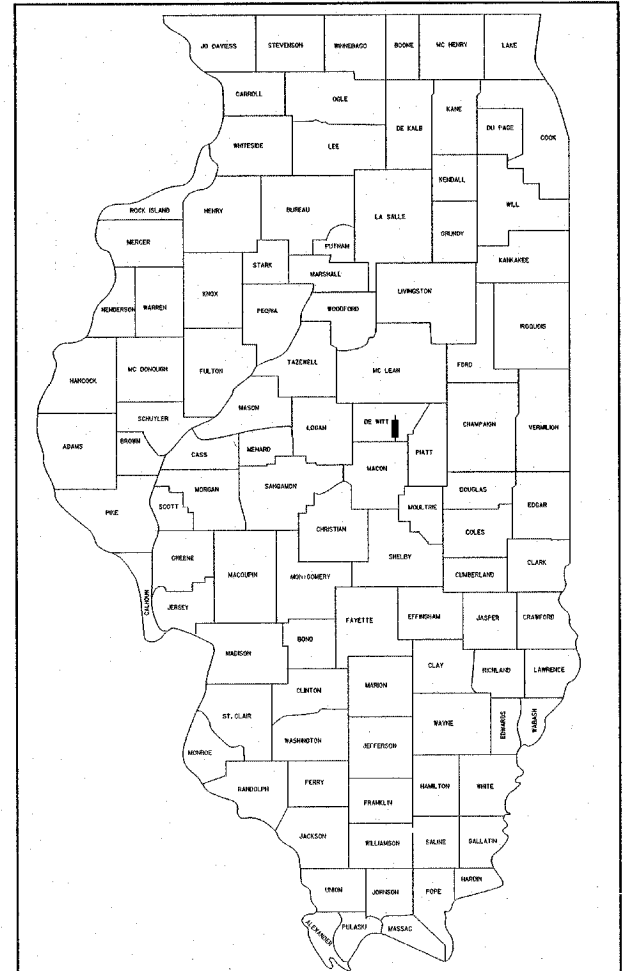
ROUTE NO.	SECTION	COUNTY	STATION	SHEET
C.H. 5	85-00043-00-RS	DEWITT	79	1
FED. ROAD DIST. NO.		ILLINOIS	FED. AID PROJECT	

CONTRACT No. 91316

**INDEX OF SHEETS**

- 1. COVER SHEET
- 2. GENERAL NOTES
- 3. SUMMARY OF QUANTITIES
- 4.-5. SCHEDULE OF QUANTITIES
- 6. CULVERT AND STORM SEWER SCHEDULE
- 7. TYPICAL CROSS SECTIONS
- 8.-25. PLAN AND PROFILE SHEETS
- 26.-27. ROADWAY DETAILS
- 28. INTERSECTION DETAILS
- 29.-39. EROSION CONTROL SHEETS
- 40.-42. ACROSS ROAD PIPE CROSS SECTIONS
- 43.-79. STATION CROSS SECTIONS

**STATE OF ILLINOIS  
DEPARTMENT OF TRANSPORTATION  
DIVISION OF HIGHWAYS  
PLANS FOR PROPOSED  
SURFACE TRANSPORTATION PROGRAM – RURAL**



LOCATION OF SECTION INDICATED THUS: - [Black Box] -

**STANDARDS**

- 280001-02 TEMPORARY EROSION CONTROL SYSTEMS
- 442201-01 CLASS C AND D PATCHES
- 542301 PRECAST REINFORCED CONCRETE FLARED END SECTIONS
- 542306 PRECAST REINFORCED CONCRETE ELLIPTICAL FLARED END SECTIONS
- 542401 METAL END SECTIONS FOR PIPE CULVERTS
- 601001 SUB-SURFACE DRAINS
- 601101 CONCRETE HEADWALL FOR PIPE DRAINS
- 602011 CATCH BASIN, TYPE C
- 602301 INLET, TYPE A
- 602306 INLET, TYPE B
- 604036-02 GRATE, TYPE 8
- 701006-01 OFF-ROAD OPERATIONS 2L,2W 4.5M (15') TO PAVEMENT EDGE FOR SPEEDS ≥ 45 MPH
- 701306 LANE CLOSURE, 2L, 2W, SLOW MOVING OPERATIONS - DAY ONLY FOR SPEEDS ≥ 45 MPH
- 7C1311-02 LANE CLOSURE, 2L, 2W, MOVING OPERATIONS - DAY ONLY
- 702001-05 TRAFFIC CONTROL DEVICES
- 780001-01 TYPICAL PAVEMENT MARKINGS
- 000001-04 STANDARD SYMBOLS, ABBREVIATIONS, AND PATTERNS
- BLR 21-6 TYPICAL APPLICATION OF TRAFFIC CONTROL DEVICES FOR CONSTRUCTION ON RURAL LOCAL HIGHWAYS
- BLR 22-4 TYPICAL APPLICATION OF TRAFFIC CONTROL DEVICES FOR CONSTRUCTION ON RURAL LOCAL HIGHWAYS (2-LANE 2 WAY RURAL TRAFFIC) (ROAD CLOSED TO THRU TRAFFIC)

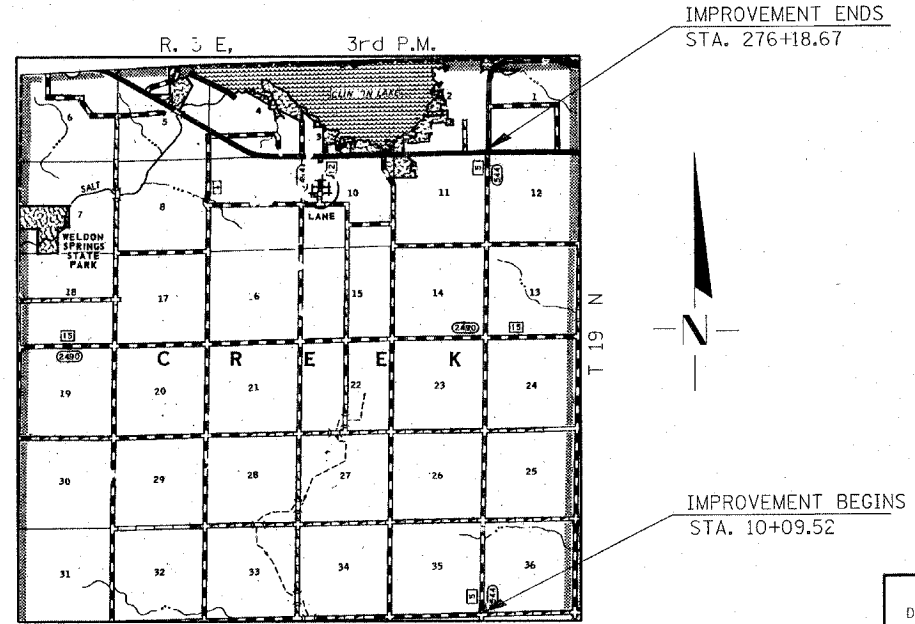
SCALES

PLAN	0' = 100'
PROFILE HORIZ.	0' = 100'
PROFILE VERT.	0' = 5'
CROSS SECTIONS	0' = 5'

**SECTION 85-00043-00-RS.  
CH 5 (WHITE PIGEON ROAD)  
DEWITT COUNTY  
PROJECT RS-544 (103)  
C-95-316-04  
FAS ROUTE 544**

**UTILITIES**

- |  |  |
|--|--|
| CITY OF DECATUR<br>#1 GARY K. ANDERSON PLAZA<br>DECATUR, ILLINOIS 62523                    | ILLINOIS POWER<br>2460 NORTH JASPER<br>DECATUR, ILLINOIS 62525                   |
| PHILLIPS PIPELINE<br>P.O. BOX 350<br>10834 NORTH 3800 EAST ROAD<br>SAYBROOK ILLINOIS 61700 | VERIZON NORTH<br>1312 EAST EMPIRE ST.<br>BLOOMINGTON, ILLINOIS 61701             |
| CORN BELT ENERGY CORPORATION<br>1 ENERGYWAY<br>BLOOMINGTON ILLINOIS 61704                  | EXPLORER PIPELINE COMPANY<br>3767 MICHIGAN STREET<br>HAMMOND, INDIANA 45323-1202 |



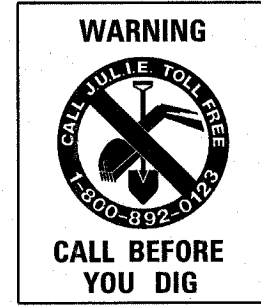
DESIGN DESIGNATION  
CH 5 WHITE PIGEON ROAD  
MAJOR COLLECTOR  
ADT = 420 (2005)  
DHV = 56 (2025)  
DESIGN SPEED: 55 M.P.H. RURAL

CONTRACT NO. 91316

**LAYOUT**

APPROXIMATE SCALE: 0 1 MILE

NET LENGTH OF SECTION = 26,609.15 FEET = 5.040 MILES



APPROVED: December 30, 2005  
Craig Fisher  
COUNTY ENGINEER

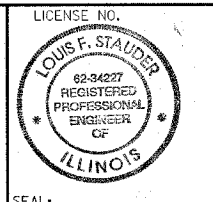
PASSED: 1/9, 2006  
David A. Spill  
DISTRICT FIVE ENGINEER OF  
LOCAL ROADS & STREETS

Releasing For  
Bid Based on  
Limited Review: 1/11, 2006  
Joseph E. Larson  
DEPUTY DIRECTOR OF HIGHWAYS  
REGION THREE ENGINEER  
STATE OF ILLINOIS  
DEPARTMENT OF TRANSPORTATION

DATE: 12/29/05

BY: Louis F. Stauder

LICENSE EXPIRES: NOVEMBER 30, 2007



Rice, Berry and Associates  
A Division of Hampton,  
Lenzini and Renwick, Inc.

**HLR**  
Civil & Structural Engineers  
3085 Stevenson Drive  
Suite 201  
Springfield, Illinois 62703  
217-546-3400

Account Number  
03-29-0007-1  
P.O. Box 1036  
DuQuoin, Illinois 62832  
618-790-4637