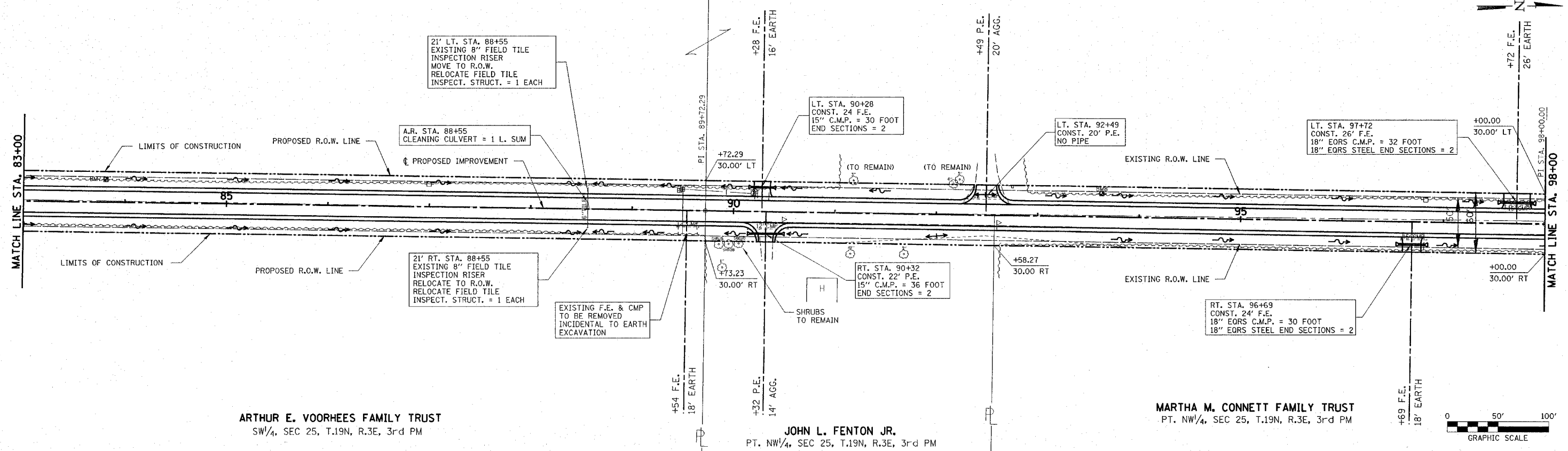


| C.H. | SECTION | COUNTY | TOTAL SHEETS | SH. N. |
|---------------------|----------------|------------------|--------------|--------|
| 5 | 85-00043-00-RS | DEWITT | 79 | |
| STA. 83+00 | | TO STA. 98+00 | | |
| FED. ROAD DIST. NO. | ILLINOIS | FED. AID PROJECT | | |
| CONTRACT No. 91316 | | | | |

ALBERT & VANESSA TOTTEN
S 1/4, SEC 26, T.19N, R.3E, 3rd PM

P.I. STA. 89+72.29
Δ = 0° 03' 57.53" (RT)
NO CURVE
N. 1242280.2367
E. 847480.3695

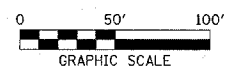
P.I. STA. 98+00.00
Δ = 0° 20' 01.99" (LT)
NO CURVE
N. 1243107.8472
E. 847493.3082



ARTHUR E. VOORHEES FAMILY TRUST
SW 1/4, SEC 25, T.19N, R.3E, 3rd PM

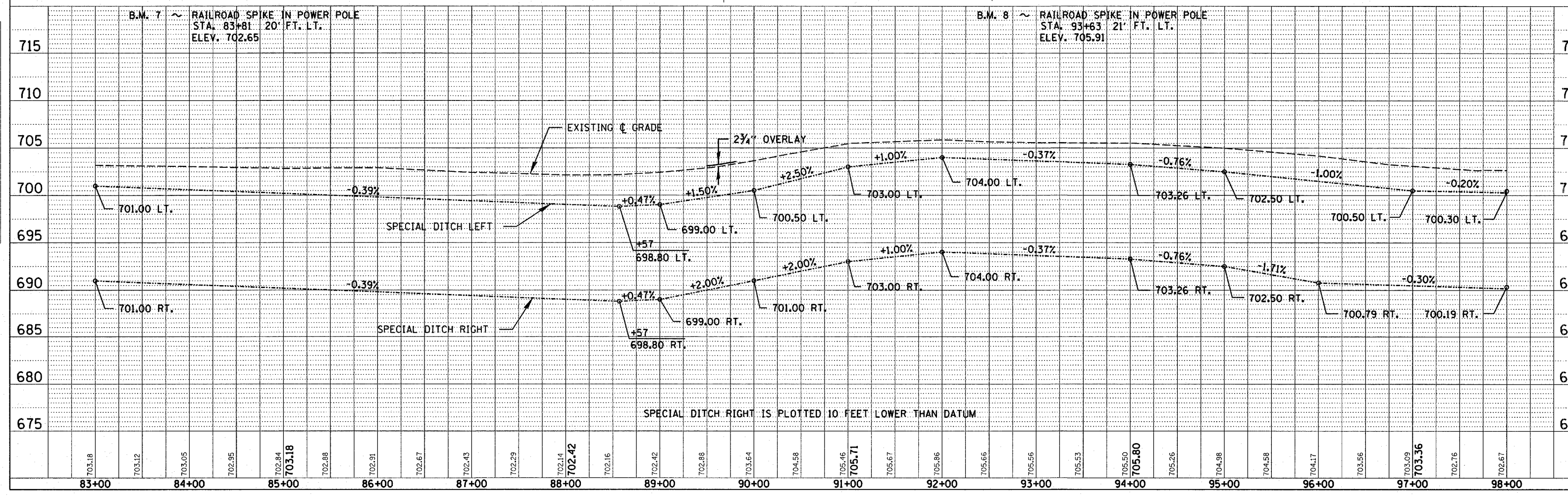
JOHN L. FENTON JR.
PT. NW 1/4, SEC 25, T.19N, R.3E, 3rd PM

MARTHA M. CONNETT FAMILY TRUST
PT. NW 1/4, SEC 25, T.19N, R.3E, 3rd PM



| DATE | BY | REVISION |
|------|----|----------|
| | | |
| | | |
| | | |

| DATE | BY | REVISION |
|------|----|----------|
| | | |
| | | |
| | | |



B.M. 7 ~ RAILROAD SPIKE IN POWER POLE
STA. 83+81 20' FT. LT.
ELEV. 702.65

B.M. 8 ~ RAILROAD SPIKE IN POWER POLE
STA. 93+63 21' FT. LT.
ELEV. 705.91