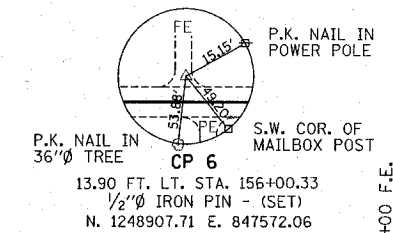


GORDON & WILMA GOBLE  
NE 1/4, SEC 23, T.19N, R. 3E, 3rd PM

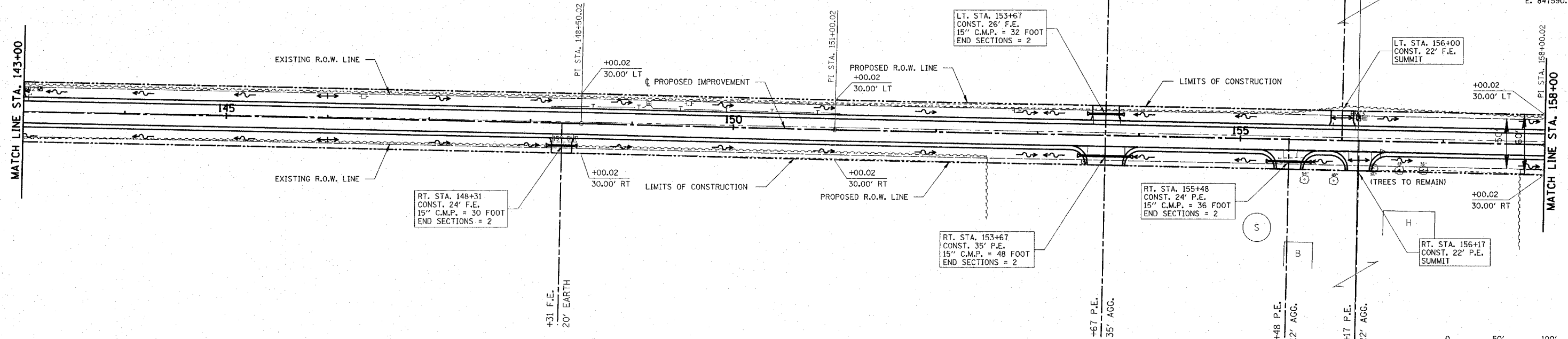
P.I. STA. 148+50.02  
Δ = 0° 11' 00.05" (RT)  
NO CURVE  
N. 1248157.2320  
E. 847571.1911

P.I. STA. 151+00.02  
Δ = 0° 12' 57.91" (LT)  
NO CURVE  
N. 1248407.1640  
E. 847577.0760

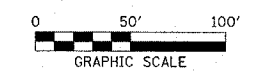
C.H.	SECTION	COUNTY	TOTAL SHEETS
5	85-00043-00-RS	DEWITT	79
STA. 143+00		TO STA. 158+00	
FED. ROAD DIST. NO.		ILLINOIS	FED. AID PROJECT
CONTRACT No. 91316			



P.I. STA. 158+00.02  
Δ = 0° 06' 14.08" (LT)  
NO CURVE  
N. 1249107.0273  
E. 847590.9143



GORDON & WILMA GOBLE  
NW 1/4, SEC 24, T.19N, R. 3E, 3rd PM



DATE	BY	REVISION

DATE	BY	REVISION

