

INDEX OF SHEETS

- 1 Cover Sheet
- 2 Summary of Quantities, General Notes, and Typical Sections
- 3 Plan and Profile
- 4 Horizontal Layout
- 5-7 Station Cross Sections
- 8 Storm Water Pollution Prevention and Erosion Control Plan
- 9 Guardrail Layout Details
- 10-13 Bridge Plans

LIST OF STANDARDS

- Standard 000001-04 Standard symbols, abbreviations and patterns
- Standard 280001-02 Temporary erosion control systems
- Standard 515001-02 Name plate for bridges
- Standard 630001-05 Steel Plate Beam Guardrail
- Standard 630301-03 Shoulder Widening For Type 1 (Special) Guardrail Terminals
- Standard 631026-02 Traffic Barrier Terminal Type 5A
- Standard 701011-01 Off-road moving operations, 2-l, 2-w, day only, for speeds > 45 mph
- Standard 701301-02 Lane closure, 2-l, 2-w, short time operations
- Standard 702001-05 Traffic control devices
- Standard BLR-21-6 Typical application of traffic control devices for Construction on Rural Local Highways
- Standard BLR-22-4 Typical application of traffic control devices 2-l, 2-w, rural, Road closed to Thru Traffic

ROADWAY CLASSIFICATION: MAJOR COLLECTOR
 2021 ADT = 350
 DESIGN SPEED: 50 MPH
 DESIGN GUIDELINES: RURAL
 VARIANCES GRANTED: NONE
 COMMITMENTS: NONE

JOINT UTILITY LOCATING INFORMATION FOR EXCAVATORS

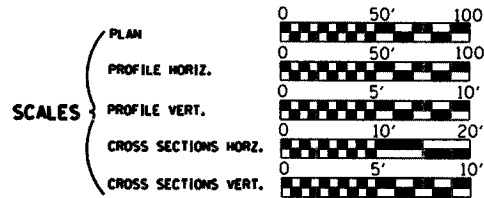
J.U.L.I.E. Telephone No. Toll Free 1-800-892-0123

CONTRACT NO. : 91342



3040 N. UNIVERSITY AVE., SUITE ONE
 DECATUR, ILLINOIS 62526-1343
 PH. 217-875-4800

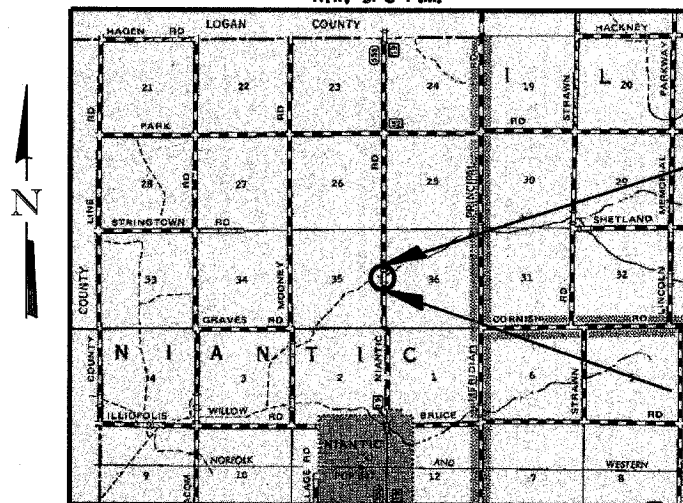
**STATE OF ILLINOIS
 DEPARTMENT OF TRANSPORTATION
 DIVISION OF HIGHWAYS
 PLANS FOR PROPOSED
 LOCAL AGENCY IMPROVEMENT**



**BRIDGE REPLACEMENT
 AND REHABILITATION PROGRAM
 C.H. 19 OVER WILLOW BRANCH
 SECTION 03-00181-00-BR
 MACON COUNTY
 PROJECT BRS-555(205)**

C-95-328-05

RIW, 3rd P.M.



IMPROVEMENT ENDS
 STA. 20+40.00

EXIST. STR. NO. 058-3026
 PROP. STR. NO. 058-3368

IMPROVEMENT BEGINS
 STA. 12+00.00

IMPROVEMENT CONSISTS OF THE REMOVAL OF A TWO SPAN PRESTRESSED CONCRETE BOX BEAM SUPERSTRUCTURE ON CLOSED STONE ABUTMENTS WITH TIMBER WINGWALLS AND TIMBER PIER, 0-0 DECK = 21'-2", BK.-BK. ABUTMENTS = 50'-0" AND THE CONSTRUCTION OF A SINGLE SPAN PRECAST PRESTRESSED CONCRETE DECK BEAM BRIDGE ON CONCRETE SPILL THRU ABUTMENTS. TOTAL LENGTH = 71'-0", WIDTH = 24'-0" O.-O. DECK AND NECESSARY APPROACH ROADWAY WORK.

LAYOUT

Approximate Scale: scale miles
 Total and Net Length of Improvement 840.00 Feet = 0.159 Miles

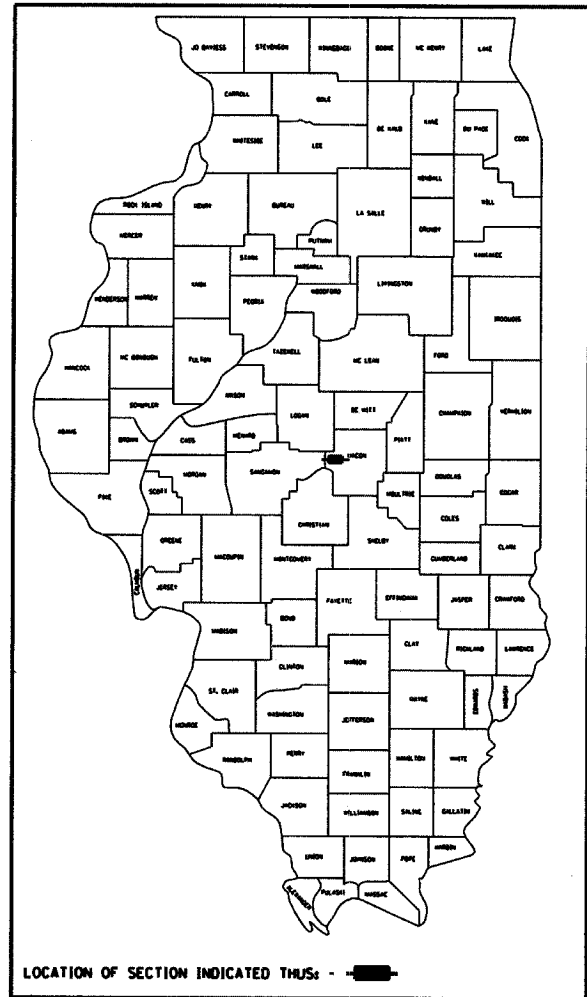


Keith W. Bonting
 Illinois Professional No. 43789

11/10/2005
 Date

RTE. NO.	SECTION	COUNTY	TOTAL SHEET
C.H. 19	03-00181-00-BR	MACON	13
FED. ROAD DIST. NO.	ILLINOIS	PROJECT: BRS-555(205)	

CONTRACT NO. 91342



PLANS DEVELOPED IN ACCORDANCE WITH B.L.R.S. MANUAL

APPROVED	<i>NOVEMBER 10</i>	20 05
	<i>[Signature]</i>	COUNTY ENGINEER
APPROVED		20
PASSED	<i>11/29</i>	20 05
	<i>[Signature]</i>	DISTRICT FIVE ENGINEER OF LOCAL ROADS & STREETS
Releasing For Bid Based on Limited Review	<i>Nov 29</i>	20 05
	<i>[Signature]</i>	DEPUTY DIRECTOR OF HIGHWAYS, REGION THREE ENGINEER

STATE OF ILLINOIS
 DEPARTMENT OF TRANSPORTATION