

INDEX OF SHEETS

- 1 Cover Sheet
- 2 Summary of Quantities, General Notes, and Typical Sections
- 3 Plan and Profile
- 4 Horizontal Layout
- 5-7 Station Cross Sections
- 8-11 Bridge Plans

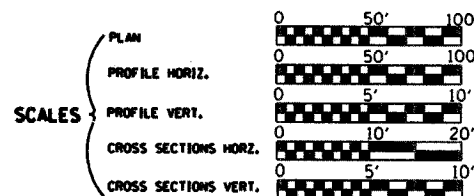
**STATE OF ILLINOIS
DEPARTMENT OF TRANSPORTATION
DIVISION OF HIGHWAYS
PLANS FOR PROPOSED
LOCAL AGENCY IMPROVEMENT**

RTE. NO.	SECTION	COUNTY	TOTAL SHEETS
C.H. 54	05-00197-00-BR	MACON	11
FED. ROAD DIST. NO.	ILLINOIS PROJECT		

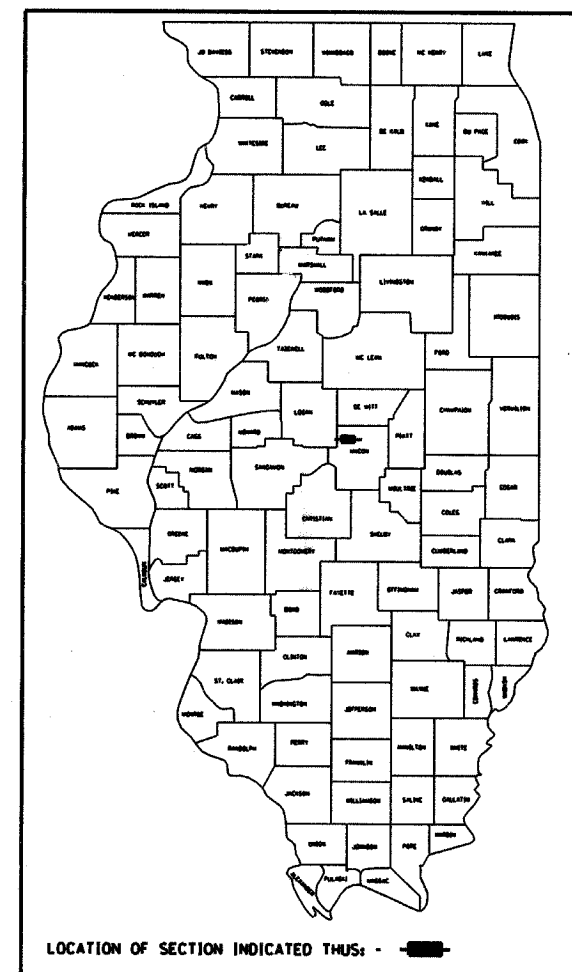
CONTRACT NO. 91344

LIST OF STANDARDS

- Standard 000001-04 Standard symbols, abbreviations and patterns
- Standard 280001-02 Temporary erosion control systems
- Standard 515001-02 Name plate for bridges
- Standard 701011-01 Off-road moving operations, 2-l, 2-w, day only, for speeds > 45 mph
- Standard 701301-02 Lane closure, 2-l, 2-w, short time operations
- Standard 702001-05 Traffic control devices
- Standard BLR-21-6 Typical application of traffic control devices for Construction on Rural Local Highways
- Standard BLR-22-4 Typical application of traffic control devices 2-l, 2-w, rural, Road closed to Thru Traffic



**BRIDGE REPLACEMENT
AND REHABILITATION PROGRAM
C.H. 54 OVER DRAINAGE DITCH
SECTION 05-00197-00-BR
MACON COUNTY
PROJECT BRS-115(55)**



PLANS DEVELOPED IN ACCORDANCE WITH F.A.P.L.H.I. MANUAL

APPROVED SEPTEMBER 8 2005
COUNTY ENGINEER

APPROVED _____ 20____

PASSED 11/28 2005
DISTRICT FIVE ENGINEER OF LOCAL ROADS & STREETS

Releasing For Bid Based on Limited Review NOV 29 2005
DEPUTY DIRECTOR OF HIGHWAYS, REGION THREE ENGINEER

STATE OF ILLINOIS
DEPARTMENT OF TRANSPORTATION

Keith W. Benning
 Illinois Professional No. 43789

11/19/2005
9/6/2005
 Date

ROADWAY CLASSIFICATION: LOCAL ROAD
 2021 ADT = 75
 DESIGN SPEED: 30 MPH
 DESIGN GUIDELINES: RURAL
 VARIANCES GRANTED: NONE
 COMMITMENTS: NONE

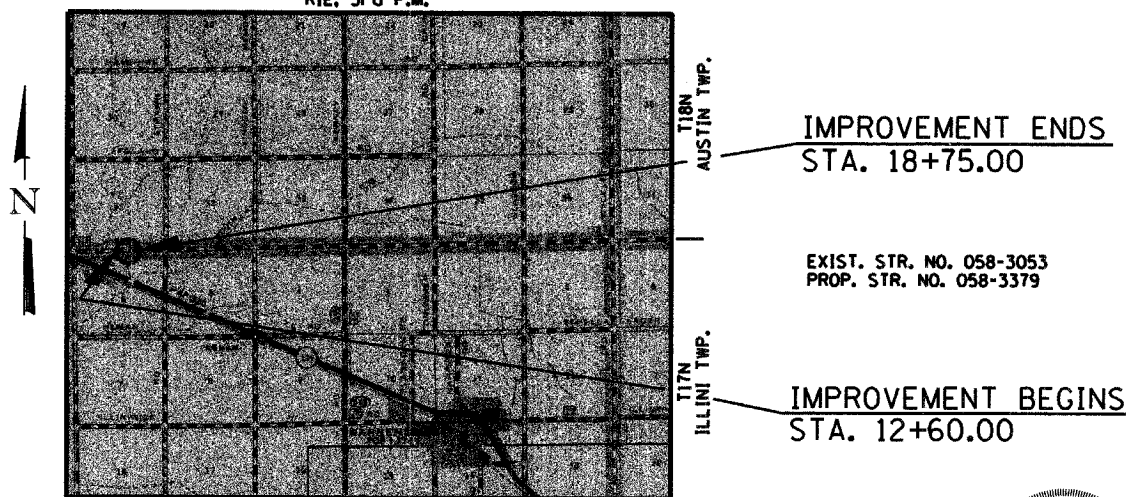
JOINT UTILITY LOCATING INFORMATION FOR EXCAVATORS
 J.U.L.I.E. Telephone No. Toll Free 1-800-892-0123

CONTRACT NO. : 91344

URS
 3040 N. UNIVERSITY AVE., SUITE ONE
 DECATUR, ILLINOIS 62526-1343
 PH. 217-875-4800

C-95-330-05

RIE, 3rd P.M.



IMPROVEMENT CONSISTS OF THE REMOVAL OF A SINGLE SPAN PRECAST CONCRETE CHANNEL BEAM BRIDGE WITH CONCRETE CURBS ON TIMBER ABUTMENTS ON TIMBER PILES WITH TIMBER BACKWALLS AND TIMBER WINGWALLS, O-O DECK = 26'-0", BK.-BK. ABUTMENTS = 30'-3" AND THE CONSTRUCTION OF A SINGLE SPAN PRECAST PRESTRESSED CONCRETE DECK BEAM BRIDGE ON CONCRETE SPILL THRU ABUTMENTS. TOTAL LENGTH = 73'-11 1/4". WIDTH = 24'-0" O-O, DECK AND NECESSARY APPROACH ROADWAY WORK.

LAYOUT

Approximate Scale:

Total and Net Length of Improvement 615.00 Feet = 0.116 Miles

