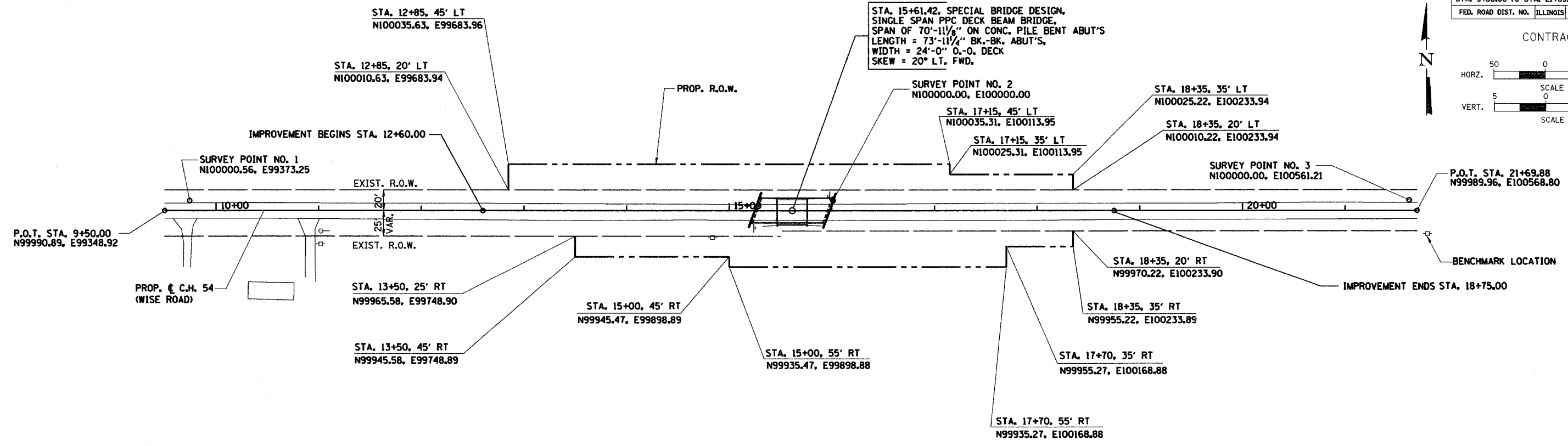
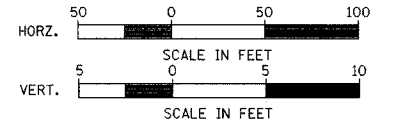


RTE.	SECTION	COUNTY	TOTAL SHEETS	SHEET NO.
C.H. 54	05-00197-00-BR	MACON	11	4
STA. 9+50.00 TO STA. 21+69.88				
FED. ROAD DIST. NO. ILLINOIS PROJECT BRS-115(55)				

CONTRACT NO. 91344



**PROPOSED STRUCTURE LAYOUT**

WEST ABUTMENT	EAST ABUTMENT
BK. OF W. ABUT. STA. 15+24.45 N99990.45, E99923.37	BK. OF E. ABUT. STA. 15+98.39 N99990.40, E99997.31
☉ W. ABUT. STA. 15+25.78 N99990.45, E99924.70	☉ E. ABUT. STA. 15+97.06 N99990.40, E99995.98
FACE OF W. ABUT. STA. 15+27.11 N99990.45, E99926.03	FACE OF E. ABUT. STA. 15+95.73 N99990.40, E99994.65

**NOTE:**  
FOR TIE POINTS AND BENCHMARK LOCATION,  
SEE SHEET 3 OF 11.