

INDEX OF SHEETS

- 1 Cover Sheet
- 2 Summary of Quantities, General Notes, and Typical Sections
- 3 Plan and Profile
- 4 Horizontal Layout
- 5-7 Station Cross Sections
- 8-11 Bridge Plans

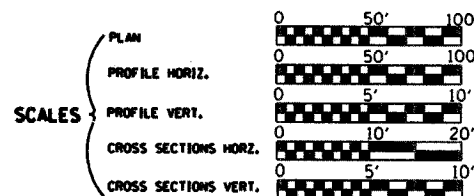
STATE OF ILLINOIS DEPARTMENT OF TRANSPORTATION DIVISION OF HIGHWAYS PLANS FOR PROPOSED LOCAL AGENCY IMPROVEMENT

RTE. NO.	SECTION	COUNTY	TOTAL SHEETS
C.H. 54	05-00197-00-BR	MACON	11
FED. ROAD DIST. NO.	ILLINOIS PROJECT		

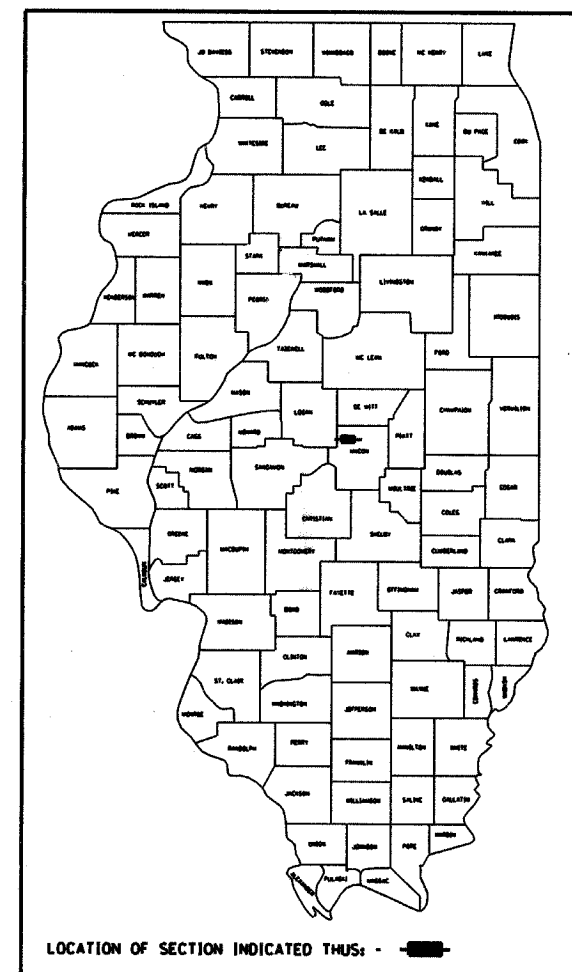
CONTRACT NO. 91344

LIST OF STANDARDS

- Standard 000001-04 Standard symbols, abbreviations and patterns
- Standard 280001-02 Temporary erosion control systems
- Standard 515001-02 Name plate for bridges
- Standard 701011-01 Off-road moving operations, 2-l, 2-w, day only, for speeds > 45 mph
- Standard 701301-02 Lane closure, 2-l, 2-w, short time operations
- Standard 702001-05 Traffic control devices
- Standard BLR-21-6 Typical application of traffic control devices for Construction on Rural Local Highways
- Standard BLR-22-4 Typical application of traffic control devices 2-l, 2-w, rural, Road closed to Thru Traffic



BRIDGE REPLACEMENT AND REHABILITATION PROGRAM C.H. 54 OVER DRAINAGE DITCH SECTION 05-00197-00-BR MACON COUNTY PROJECT BRS-115(55)



PLANS DEVELOPED IN ACCORDANCE WITH F.A.P.L.H.I. MANUAL

APPROVED	<u>SEPTEMBER 8</u>	20 <u>05</u>
	<i>[Signature]</i>	COUNTY ENGINEER
APPROVED		20
PASSED	<u>11/28</u>	20 <u>05</u>
	<i>[Signature]</i>	DISTRICT FIVE ENGINEER OF LOCAL ROADS & STREETS
Releasing For Bid Based on Limited Review	<u>NOV 29</u>	20 <u>05</u>
	<i>[Signature]</i>	DEPUTY DIRECTOR OF HIGHWAYS, REGION THREE ENGINEER

STATE OF ILLINOIS
DEPARTMENT OF TRANSPORTATION

11/19/2005
9/6/2005
Date

ROADWAY CLASSIFICATION: LOCAL ROAD
2021 ADT = 75
DESIGN SPEED: 30 MPH
DESIGN GUIDELINES: RURAL
VARIANCES GRANTED: NONE
COMMITMENTS: NONE

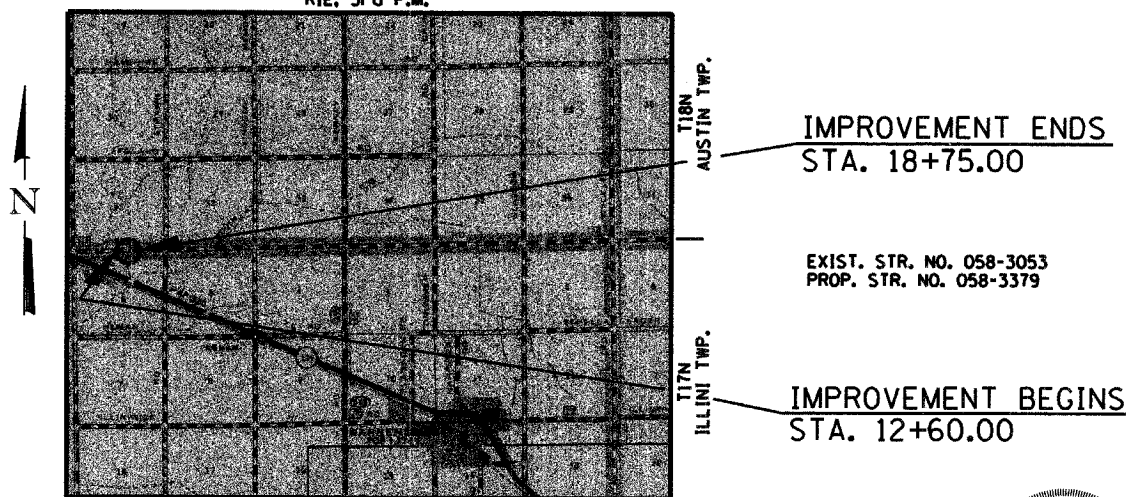
JOINT UTILITY LOCATING INFORMATION FOR EXCAVATORS
J.U.L.I.E. Telephone No. Toll Free 1-800-892-0123

CONTRACT NO. : 91344

URS
3040 N. UNIVERSITY AVE., SUITE ONE
DECATUR, ILLINOIS 62526-1343
PH. 217-875-4800

C-95-330-05

RIE, 3rd P.M.



IMPROVEMENT CONSISTS OF THE REMOVAL OF A SINGLE SPAN PRECAST CONCRETE CHANNEL BEAM BRIDGE WITH CONCRETE CURBS ON TIMBER ABUTMENTS ON TIMBER PILES WITH TIMBER BACKWALLS AND TIMBER WINGWALLS, O-O DECK = 26'-0", BK.-BK. ABUTMENTS = 30'-3" AND THE CONSTRUCTION OF A SINGLE SPAN PRECAST PRESTRESSED CONCRETE DECK BEAM BRIDGE ON CONCRETE SPILL THRU ABUTMENTS. TOTAL LENGTH = 73'-11 1/4". WIDTH = 24'-0" O-O, DECK AND NECESSARY APPROACH ROADWAY WORK.

LAYOUT

Approximate Scale: scale miles

Total and Net Length of Improvement 615.00 Feet = 0.116 Miles



[Signature]
Illinois Professional No. 43789

SUMMARY OF QUANTITIES

(CONSTRUCTION TYPE CODE X080-2A)

CODE NO.	ITEM	UNIT	QUANTITY
20200100	EARTH EXCAVATION	CU YD	574
20300100	CHANNEL EXCAVATION	CU YD	194
20400800	FURNISHED EXCAVATION	CU YD	1229
25000200	SEEDING, CLASS 2	ACRE	0.6
25000400	NITROGEN FERTILIZER NUTRIENT	POUND	54
25000500	PHOSPHORUS FERTILIZER NUTRIENT	POUND	54
25000600	POTASSIUM FERTILIZER NUTRIENT	POUND	54
25100115	MULCH, METHOD 2	ACRE	0.6
28000300	TEMPORARY DITCH CHECKS	EACH	8
28000400	PERIMETER EROSION BARRIER	FOOT	208
28000500	INLET AND PIPE PROTECTION	EACH	2
28100107	STONE RIPRAP, CLASS A4	SQ YD	843
28200200	FILTER FABRIC	SQ YD	843
30201500	LIME	TON	29.3
31000600	PROCESSING LIME STABILIZED SOIL MIXTURE 12"	SQ YD	1300
35101800	AGGREGATE BASE COURSE, TYPE B 6"	SQ YD	152
40300100	BITUMINOUS MATERIALS (PRIME COAT)	GALLON	686
40600300	AGGREGATE (PRIME COAT)	TON	3
48101200	AGGREGATE SHOULDERS, TYPE B	TON	128
50100100	REMOVAL OF EXISTING STRUCTURES	EACH	1
50300225	CONCRETE STRUCTURES	CU YD	21.3
50400605	PRECAST PRESTRESSED CONCRETE DECK BEAMS (33" DEPTH)	SQ FT	1732
50800205	REINFORCEMENT BARS, EPOXY COATED	POUND	2540
50900205	STEEL RAILING, TYPE S1	FOOT	145
51201400	FURNISHING STEEL PILES HP10X42	FOOT	319
51202700	DRIVING STEEL PILES	FOOT	319
51203400	TEST PILE STEEL HP10X42	EACH	1
51204315	CONCRETE ENCASEMENT	CU YD	3.4
51500100	NAME PLATES	EACH	1
542D0220	PIPE CULVERTS, CLASS D, TYPE 1 15"	FOOT	70
58100200	WATERPROOFING MEMBRANE SYSTEM	SQ YD	192
58300100	PORTLAND CEMENT MORTAR FAIRING COURSE	FOOT	506
67100100	MOBILIZATION	L SUM	1
X4066414	* BITUMINOUS CONCRETE SURFACE COURSE, SUPERPAVE, MIX "C", N50	TON	153
X4066614	* BITUMINOUS CONCRETE BINDER COURSE, SUPERPAVE, IL-19.0, N50	TON	406
Z0013825	* CONTROLLED LOW-STRENGTH MATERIAL	CU YD	16

* SEE SPECIAL PROVISIONS

GENERAL NOTES

THE AREA TO BE SEEDDED SHALL CONSIST OF ALL DISTURBED EARTH SURFACES WITHIN THE RIGHT-OF-WAY AND EASEMENTS AS DIRECTED BY THE ENGINEER.

CLASS OF SEEDING	BEGINNING DATES	TERMINATION DATES
1, 1A, 1B, 2, 2A, 3 (IN SPRING)	APRIL 1	MAY 15
1, 1A, 1B, 2, 2A, 3 (IN FALL)	AUGUST 15	OCTOBER 15

LAYOUT OF EROSION CONTROL ITEMS MAY BE VARIED IN THE FIELD TO SUIT GROUND CONDITIONS AS DIRECTED BY THE ENGINEER.

IT SHALL BE THE CONTRACTOR'S RESPONSIBILITY TO DETERMINE THE ACTUAL LOCATION OF ALL UNDERGROUND UTILITY FACILITIES. HE SHALL ALSO OBTAIN FROM THE RESPECTIVE UTILITY COMPANIES DETAILED INFORMATION RELATIVE TO THE LOCATION OF THEIR FACILITIES AND THE WORKING SCHEDULES OF THE UTILITY COMPANIES FOR THEIR MARKING OF THE EXACT LOCATION.

WHERE SECTION OR SUB-SECTION MONUMENTS ARE ENCOUNTERED, THE ENGINEER SHALL BE NOTIFIED BEFORE SUCH MONUMENTS ARE REMOVED. THE CONTRACTOR SHALL PROTECT AND CAREFULLY PRESERVE ALL MONUMENTS UNTIL AN AUTHORIZED SURVEYOR OR AGENT HAS WITNESSED OR OTHERWISE REFERENCED THEIR LOCATION. THE CONTRACTOR WILL BE RESPONSIBLE FOR THE COST OF HAVING AN AUTHORIZED SURVEYOR RE-ESTABLISH ANY SECTION OR SUB-SECTION MONUMENTS DESTROYED BY HIS OPERATIONS.

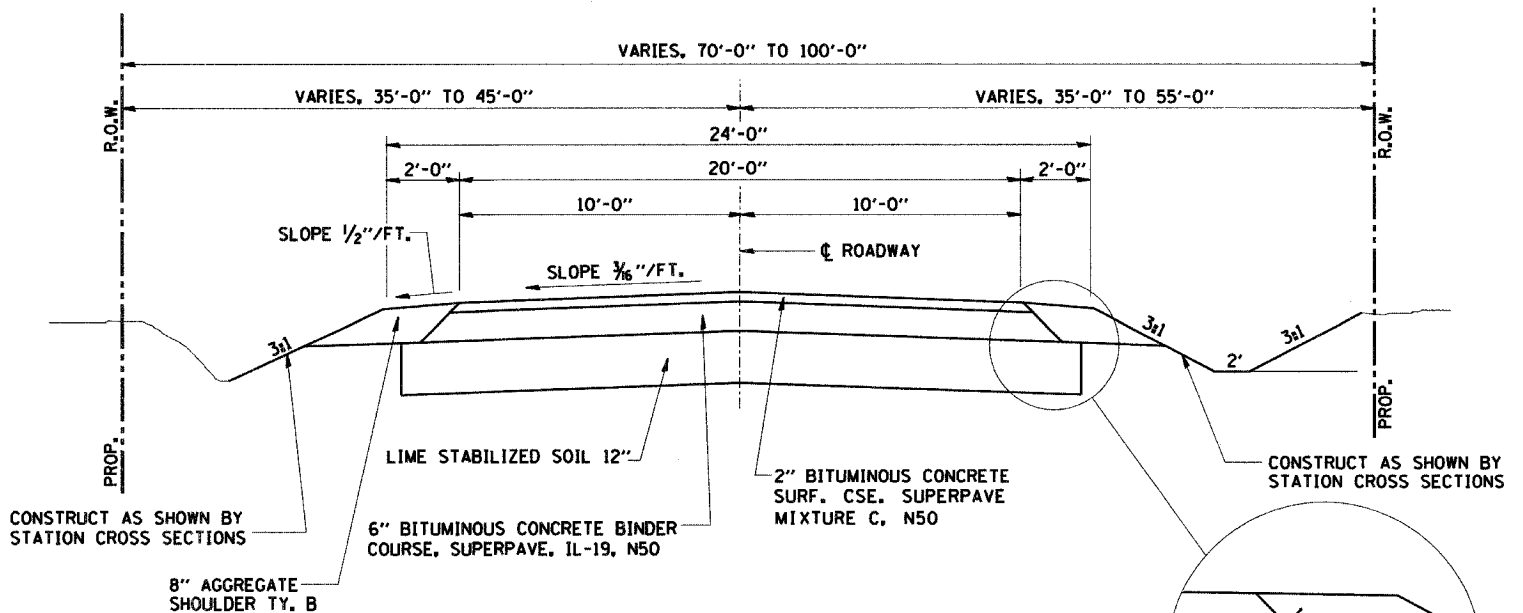
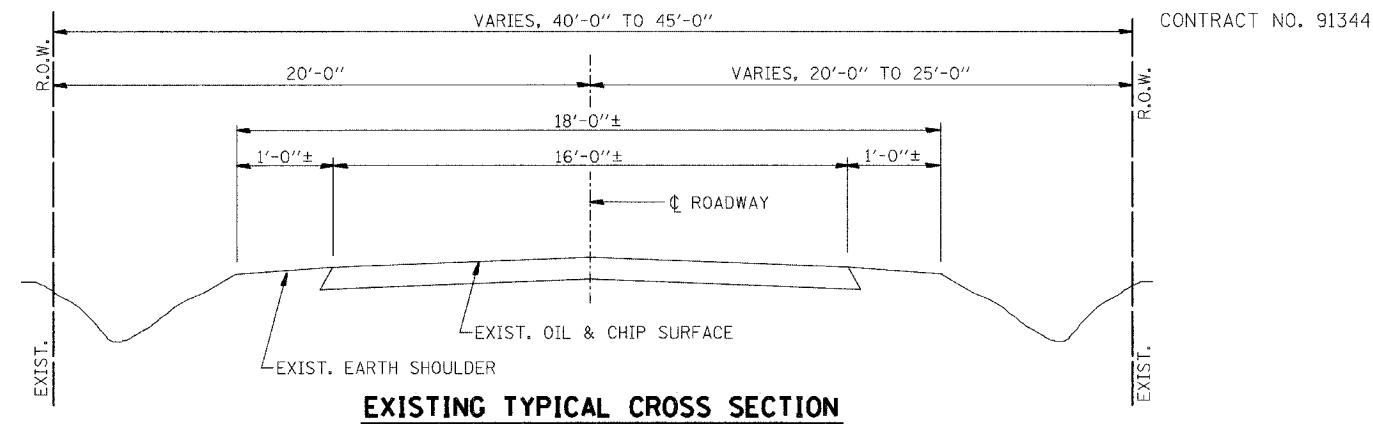
REMOVAL OF EXISTING PAVEMENT MATERIAL SHALL BE INCLUDED IN EARTH EXCAVATION.

APPLICATION RATES

LIME	45	LBS./S. Y.
GRANULAR MATERIALS	2.05	TONS/CU. YD.
BITUMINOUS MATERIALS-PRIME COAT	0.50	GALS./S. Y.
BITUMINOUS MATERIALS-FOG COAT	0.03	GALS./S. Y.
AGGREGATE PRIME COAT	2.4	LBS./S. Y.
BITUMINOUS CONCRETE	112	LBS./S. Y./INCH
NITROGEN FERTILIZER NUTRIENT	90	LBS./ACRE
PHOSPHORUS FERTILIZER NUTRIENT	90	LBS./ACRE
POTASSIUM FERTILIZER NUTRIENT	90	LBS./ACRE
MULCH METHOD 2	2	TONS/ACRE

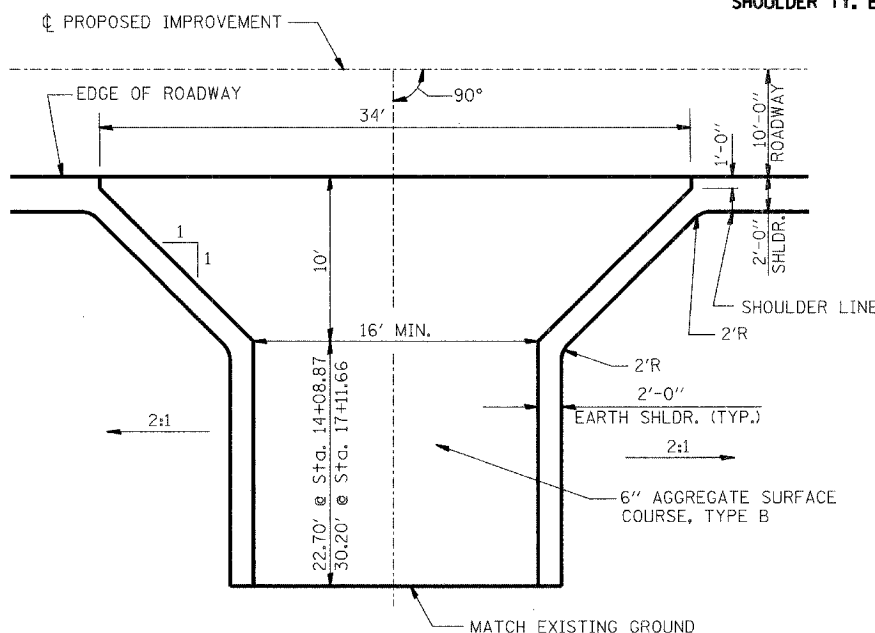
BITUMINOUS MIXTURE REQUIREMENTS

LOCATION	CH 54	CH 54
MIX USE	BINDER	SURFACE
AC/PG	PG 58-22	PG 58-22
RAP %	25	15
DESIGN VOIDS	4.0 @ N=50	4.0 @ N=50
MIXTURE COMPOSITION (GRAD. MIXTURE)	IL-19.0	IL-9.5
FRICTION	N/A	MIX C



PROPOSED TYPICAL CROSS SECTION

STA. 12+60.00 TO STA. 15+24.45
 STA. 15+98.39 TO STA. 18+75.00
 (TRANSITION STA. 12+60.00 TO STA. 13+60.00)
 (TRANSITION STA. 17+75.00 TO STA. 18+75.00)



FIELD ENTRANCE DETAIL

LT., STA. 14+08.87
 RT., STA. 17+11.66
 AGGREGATE BASE COURSE, TYPE B 6"
 TOTAL = 152 SQ YD

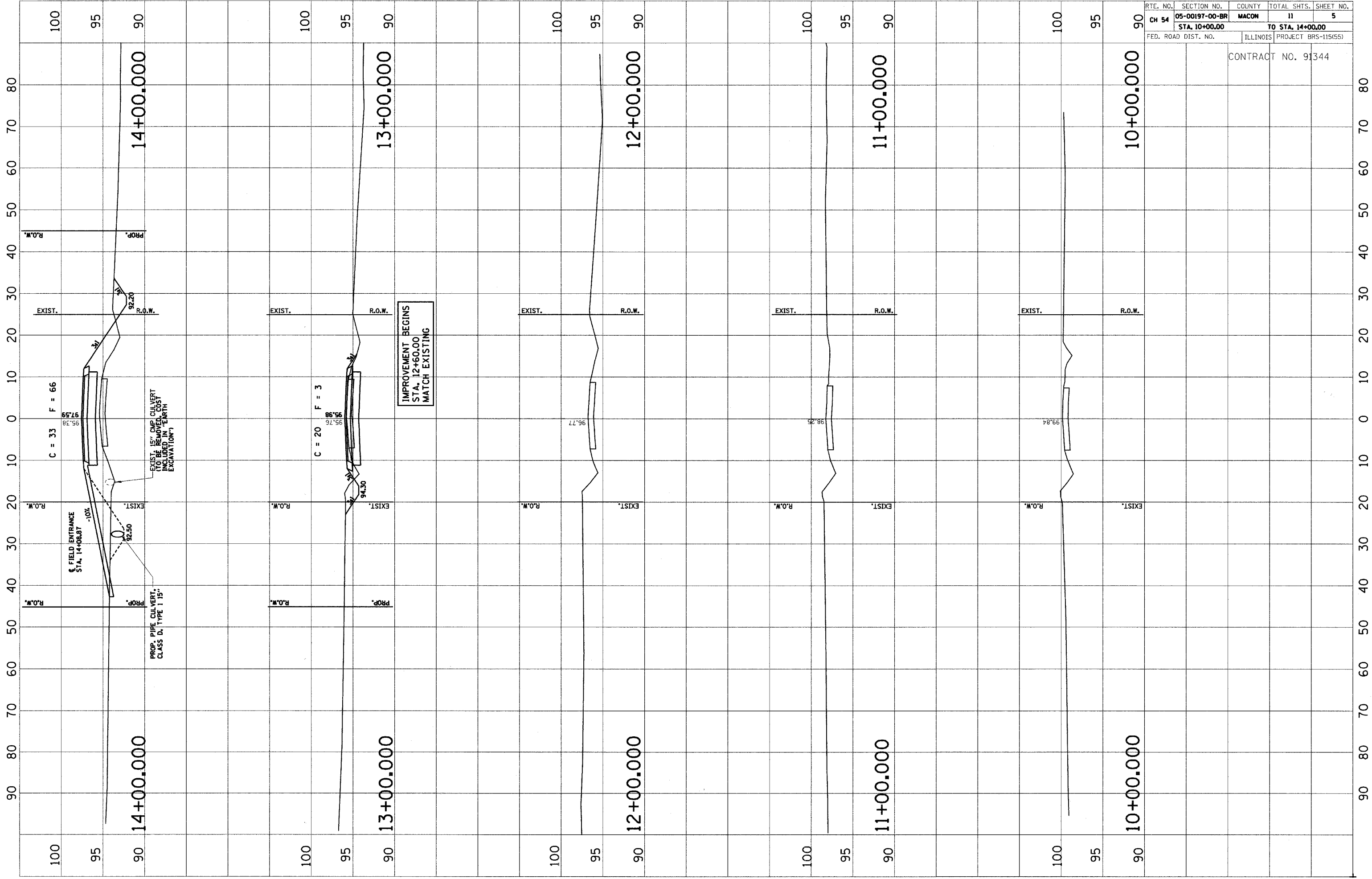
ROADWAY QUANTITY SCHEDULE

LOCATION	PROC LIME STAB SOIL MIX 12" (SQ YD)	BIT MATLS PR CT (GAL)	AGG PR CT (TON)	BIT BINDER CSE 6" (TON)	BIT SURFACE CSE 2" (TON)	AGG SHLDS TY B (TON)
M.L. STA. 12+60.00 TO STA. 15+24.45	635	335	1.5	198	64	63
M.L. STA. 15+98.39 TO STA. 18+75.00	665	351	1.5	208	67	65
OVERLAY AT STRUCTURE					22	
TOTALS	1300	686	3	406	153	128

GENERAL DATA

Date	Designed MJP	<p>C.H. 54 OVER DRAINAGE DITCH SECTION 05-00197-00-BR MACON COUNTY STA. 15+61.42 PROP. STR. NO. 058-3379</p>
Revisions	Drawn BKN	
	Checked KWB	
	Approved KWB	
Prepared by:	URS	
<p>3040 North University Avenue Decatur, IL 62526</p>		<p>URS Job No. 36431470</p>

CONTRACT NO. 91344



IMPROVEMENT BEGINS
STA. 12+60.00
MATCH EXISTING

EXIST. 15' CMP CULVERT
(TO BE REMOVED, COST
INCLUDED IN "EARTH
EXCAVATION")

PROP. PIPE CULVERT,
CLASS D, TYPE 1 15"

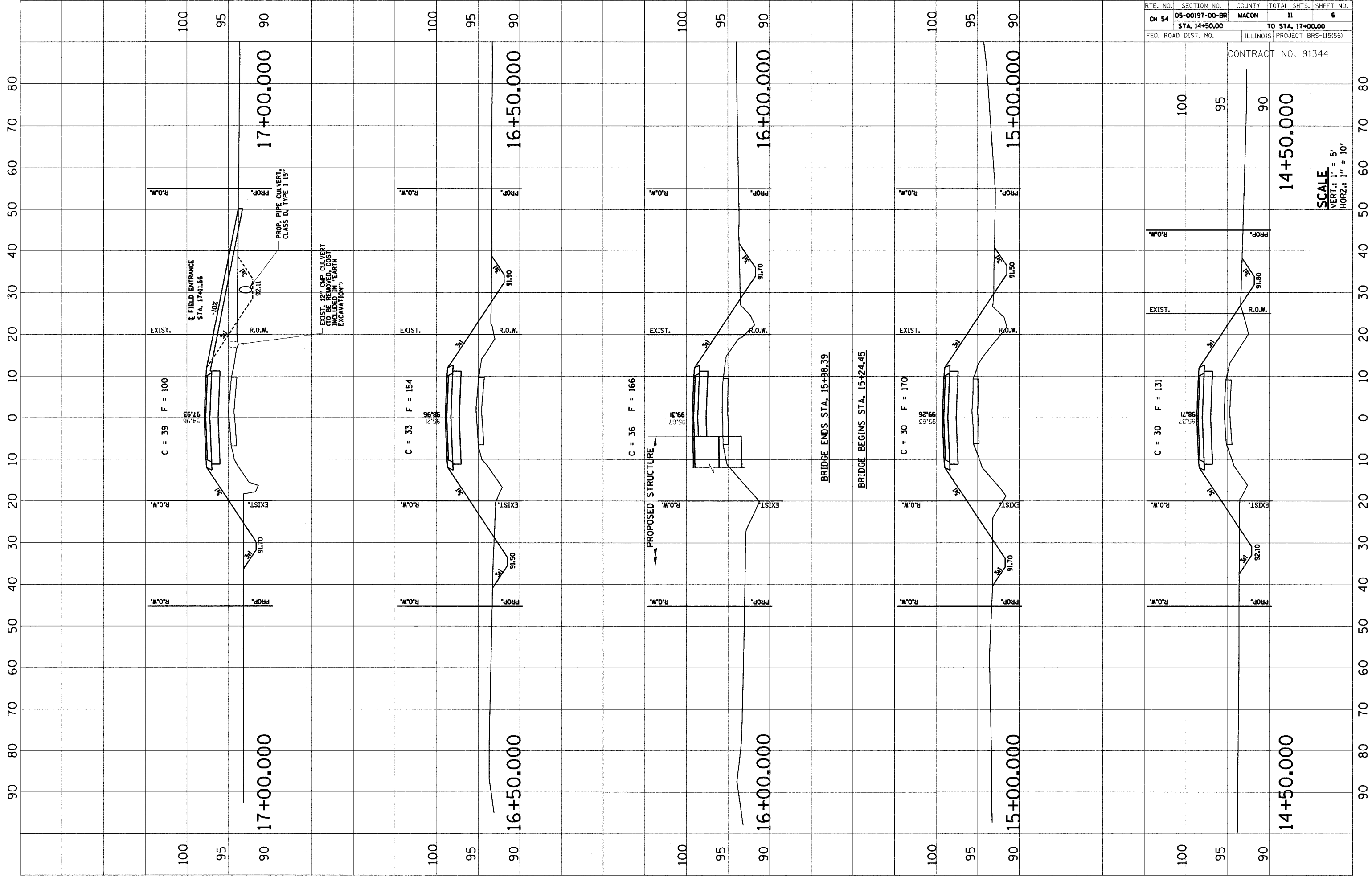
FIELD ENTRANCE
STA. 14+00.87

C = 33 F = 66

C = 20 F = 3

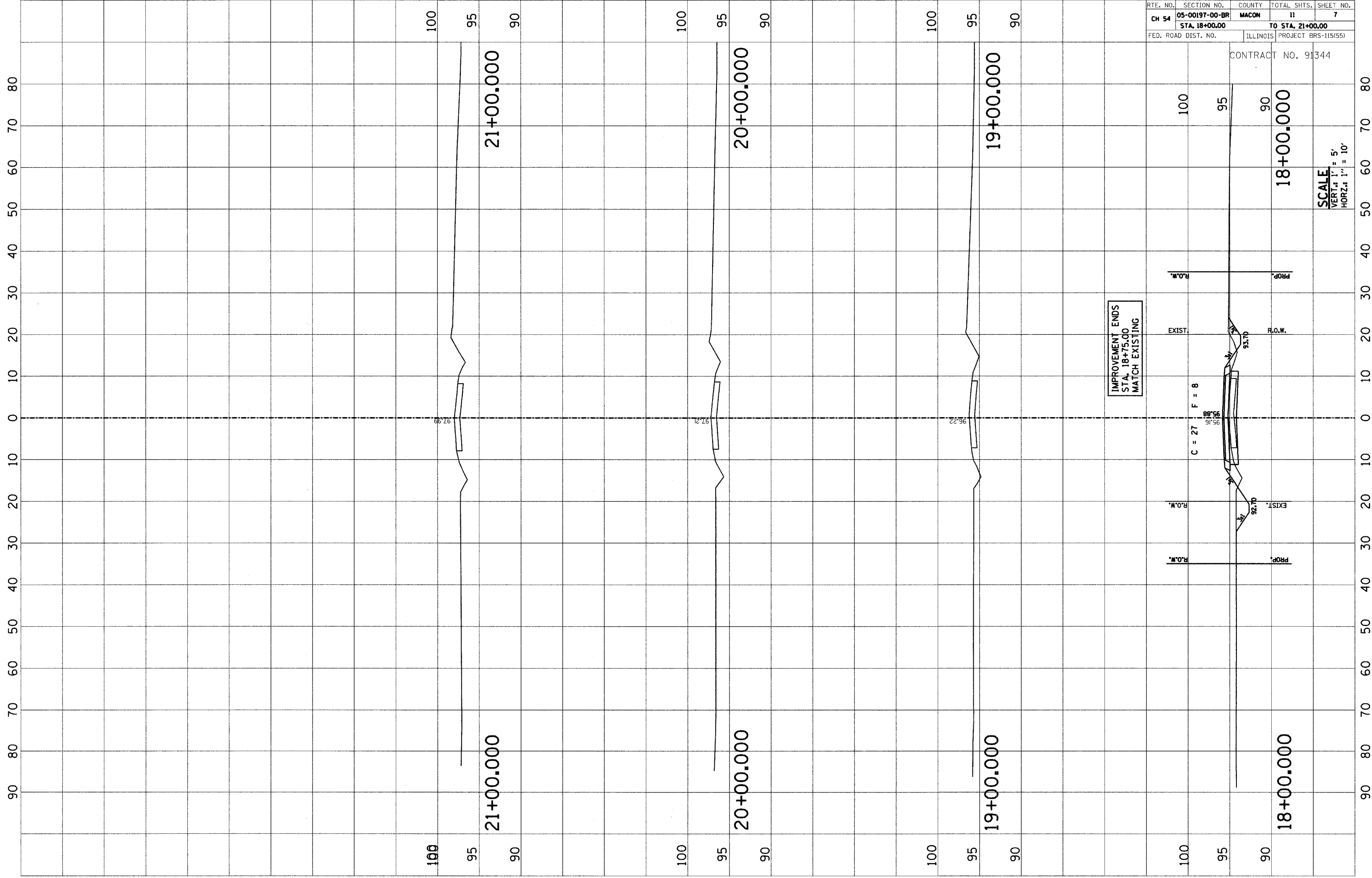
CONTRACT NO. 91344

SCALE
VERT.: 1" = 5'
HORZ.: 1" = 10'



RTE. NO.	SECTION NO.	COUNTY	TOTAL SHTS.	SHEET NO.
CH 54	05-00197-00-BR	MACON	11	7
STA. 18+00.00		TO STA. 21+00.00		
FED. ROAD DIST. NO.		ILLINOIS	PROJECT BRS-115(55)	

CONTRACT NO. 91344



IMPROVEMENT ENDS
STA. 18+75.00
MATCH EXISTING

SCALE
VERT.: 1" = 5'
HORZ.: 1" = 10'

BENCHMARK:
RR Spike in Power Pole Sta. 21+80.2, 22.5' Rt.
Elevation = 100.00

EXISTING STRUCTURE:

Single Span Precast Concrete Channel Beam Bridge with Concrete Curbs on Timber Abutments on Timber Piles with Timber Backwalls and Timber Wingwalls. 26'-0" O.-O. Deck. 30'-3" Bk.-Bk. Abuts. No Salvage. (SN 058-3053)

ROUTE NO.	SECTION	COUNTY	TOTAL SHEETS	SHEET NO.
C.H. 54	05-00197-00-BR	MACON	11	8
FED. ROAD DIST. NO.		ILLINOIS PROJECT		

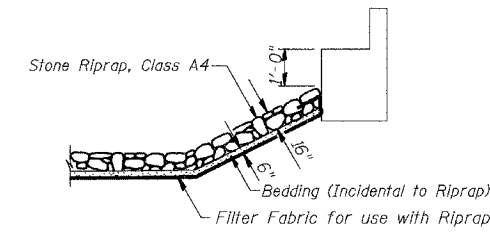
CONTRACT NO. 91344

GENERAL NOTES

Layout of Riprap Slopes may be varied in the field to suit ground conditions as directed by the Engineer.
See Proposal For Boring Data.
Reinforcement Bars shall conform to the requirements of AASHTO M-31 or M-322, Grade 60.
The Contractor shall drive one Steel Test Pile in a permanent location at the West Abutment as directed by the Engineer before ordering the remainder of piles.

TOTAL BILL OF MATERIAL

ITEM	UNIT	SUPER	SUB	TOTAL
Removal of Existing Structures	Each			1
P.P.C Deck Beams (33" Depth)	Sq. Ft.	1732		1732
Concrete Structures	Cu. Yd.		21.3	21.3
Reinforcement Bars, Epoxy Coated	Pound		2540	2540
Furnishing Steel Piles HP10x42	Foot		319	319
Driving Steel Piles	Foot		319	319
Test Pile Steel HP10x42	Each		1	1
Channel Excavation	Cu. Yd.		194	194
Stone Riprap, Class A4	Sq. Yd.		843	843
Filter Fabric for use with Riprap	Sq. Yd.		843	843
Name Plates	Each		1	1
Steel Railing Type S1	Foot	145		145
Portland Cement Mortar Fairing Course	Foot	506		506
Waterproofing Membrane System	Sq. Yd.	192		192
Bituminous Concrete Surface Course, Superpave, Mixture C, N50	Ton	21.6		21.6
Controlled Low Strength Material	Cu. Yd.		16	16
Concrete Encasement	Cu. Yd.		3.4	3.4



TRIBUTARY TO SOUTH FORK CREEK
BUILT 200., BY
MACON COUNTY
SECTION 05-00197-00-BR
C.H. 54 STA. 15+61.42
STR. NO. 058-3379 LOADING HS-20
AQUILLA TOLAND BRIDGE

NAME PLATE
(See Std. 515001)

DESIGN SPECIFICATIONS
2002 AASHTO

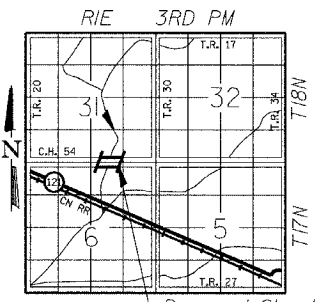
LOADING HS-20-44

Allowed 50#/sq. ft. for future wearing surface.

DESIGN STRESSES

FIELD UNITS
f'c = 3,500 p.s.i.
fy = 60,000 p.s.i.
n = 9

PPC UNITS
f'ci = 4,000 p.s.i.
f'c = 5,000 p.s.i.
f's = 270,000 p.s.i.
f'si = 201,960 p.s.i.



WATERWAY INFORMATION

Drainage Area = 15.6 Sq. Mi. Existing Low Grade Elev. 94.79 @ Sta. 17+50.00
Proposed Low Grade Elev. 95.77 @ Sta. 18+50.00

Flood	Freq. Yr.	C.F.S.	Opening Sq. Ft. Exist.	Prop.	Nat. H.W.E.	Head-Ft. Exist.	Prop.	Headwater El. Exist.	Prop.
Design	15	1548	270	456	94.96	0.50*	0.03	95.46	94.99
Base	100	2523	270	528	96.04	0.19*	0.23*	96.23	96.27
Overtopping									
Max. Calc.	500	3328	---	528	96.81	---	0.31*	---	97.12

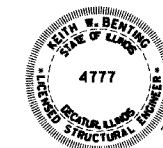
Low Beam Elev. (Prop.) = 96.10

* Over-the-Road Flow Occurs
EXISTING
15 Yr.: 78.8 Sq. Ft. over roadway
100 Yr.: 412.5 Sq. Ft. over roadway

PROPOSED
15 Yr.: None
100 Yr.: 59.3 Sq. Ft. over roadway
500 Yr.: 268.1 Sq. Ft. over roadway

DATE: Sept. 6, 2005
Keith W. Benting
KEITH W. BENTING
ILL. STRUCTURAL NO. 4777

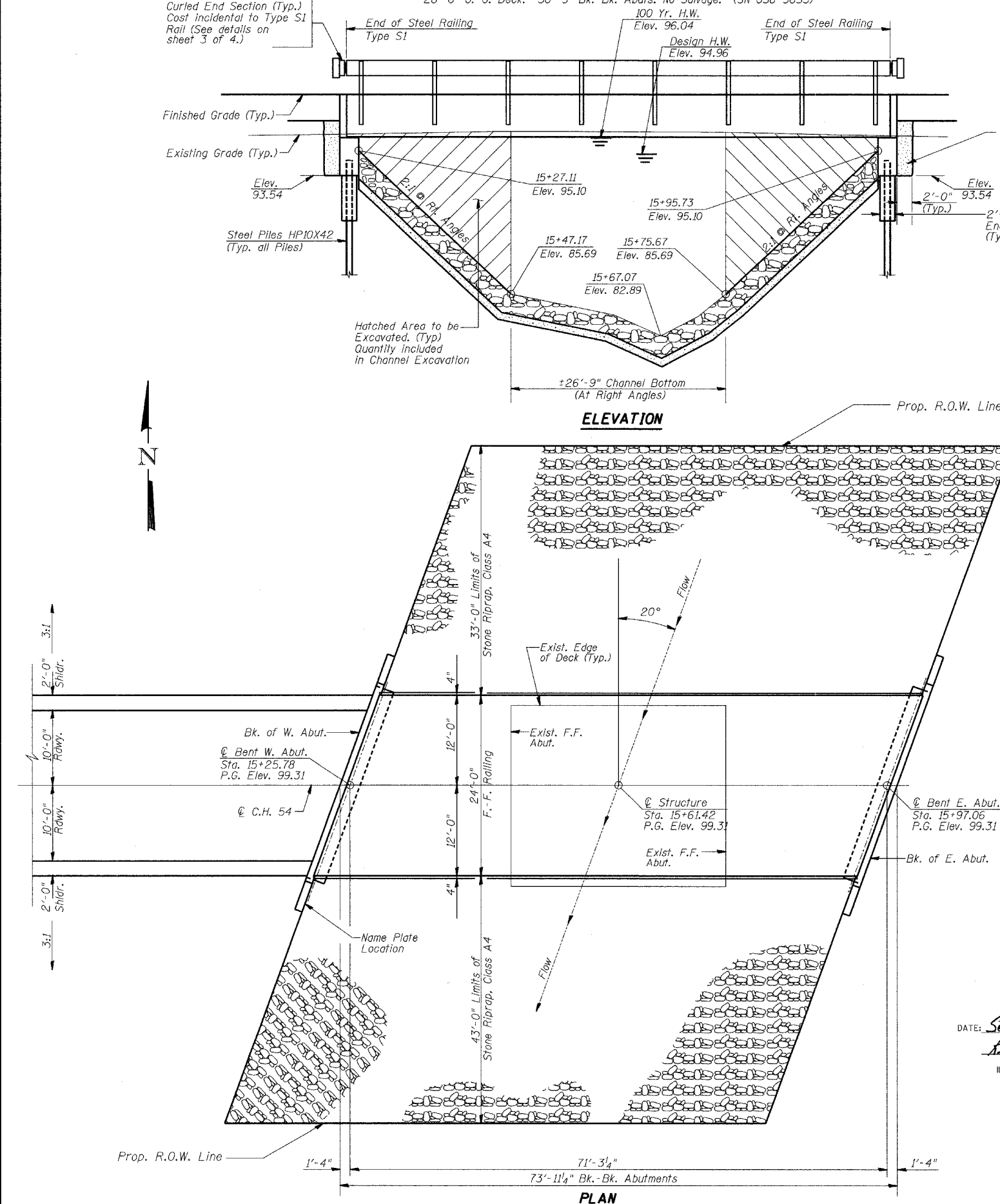
"I CERTIFY THAT TO THE BEST OF MY KNOWLEDGE, INFORMATION AND BELIEF, THIS BRIDGE DESIGN IS STRUCTURALLY ADEQUATE FOR THE DESIGN LOADING SHOWN ON THE PLANS. THE DESIGN IS AN ECONOMICAL ONE FOR THE STYLE OF STRUCTURE AND COMPLIES WITH REQUIREMENTS OF THE CURRENT AASHTO STANDARD SPECIFICATIONS FOR HIGHWAY BRIDGES."



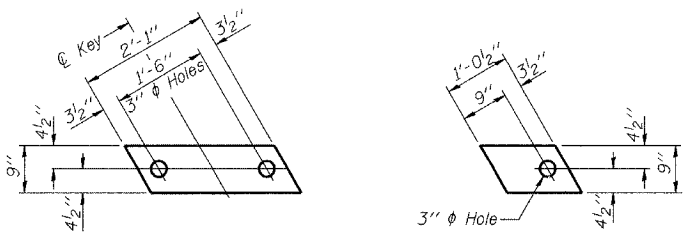
Exp 11/30/2006

GENERAL PLAN AND ELEVATION

Date	Designed MJP	C.H. 54 OVER DRAINAGE DITCH SECTION 05-00197-00-BR MACON COUNTY STA. 15+61.42 PROP. STR. NO. 058-3379	Sheet No.
Revisions	Drawn BKN		1
	Checked KWB		
	Approved KWB		
Prepared by:	URS 3040 North University Avenue Decatur, IL 62526		of 4 URS Job No. 36431470

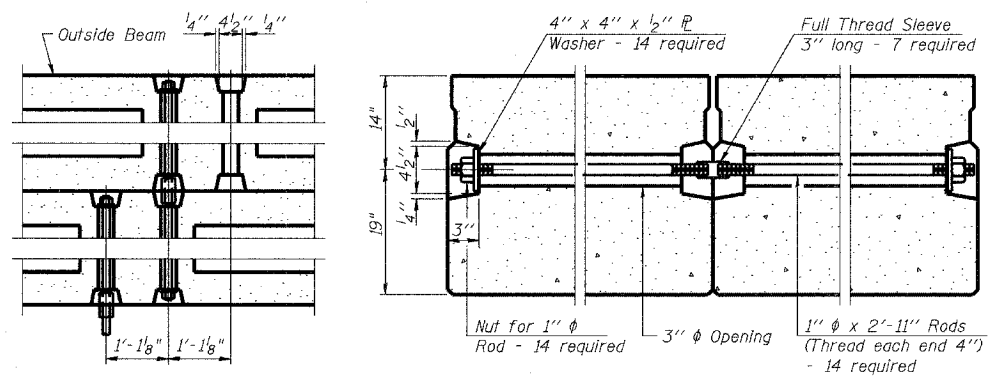


CONTRACT NO. 91344

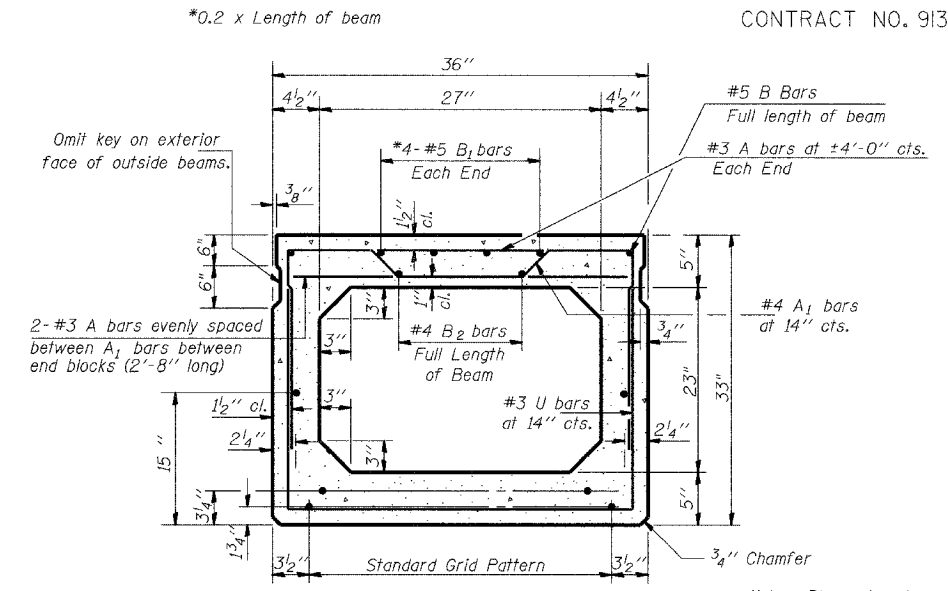


FABRIC BEARING PAD
(Interior) **FABRIC BEARING PAD**
(Exterior)

FIXED



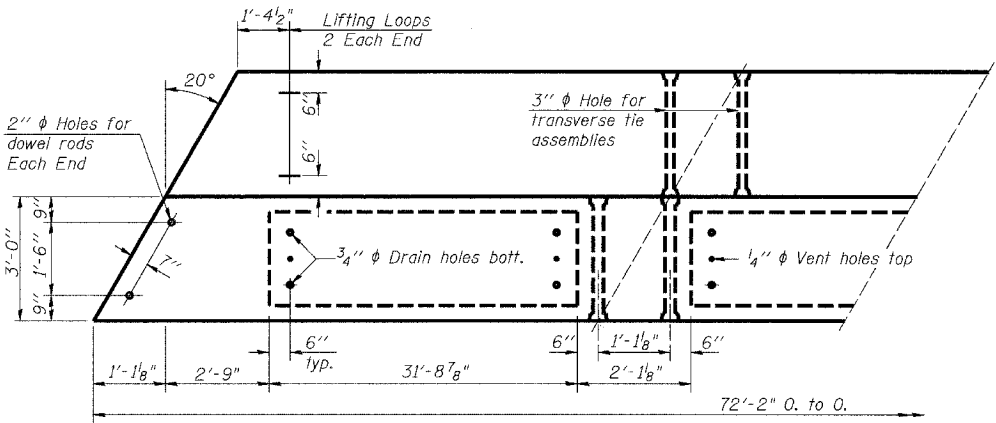
TYPICAL TRANSVERSE TIE ASSEMBLY



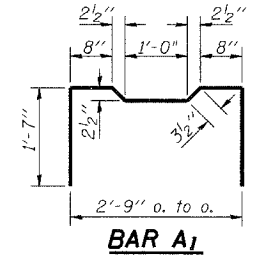
TYPICAL SECTION

18 - 1/2 inch Strands Each Strand Stressed to 30,900 Lbs.
10 - Strands 1 3/4 inch up, 6 - Strands 3/4 inch up,
and 2 - Strands 1 1/2 inch up.

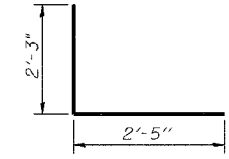
Note: Place strands symmetrically about center of beam.



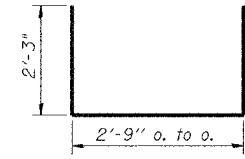
PLAN



BAR A1

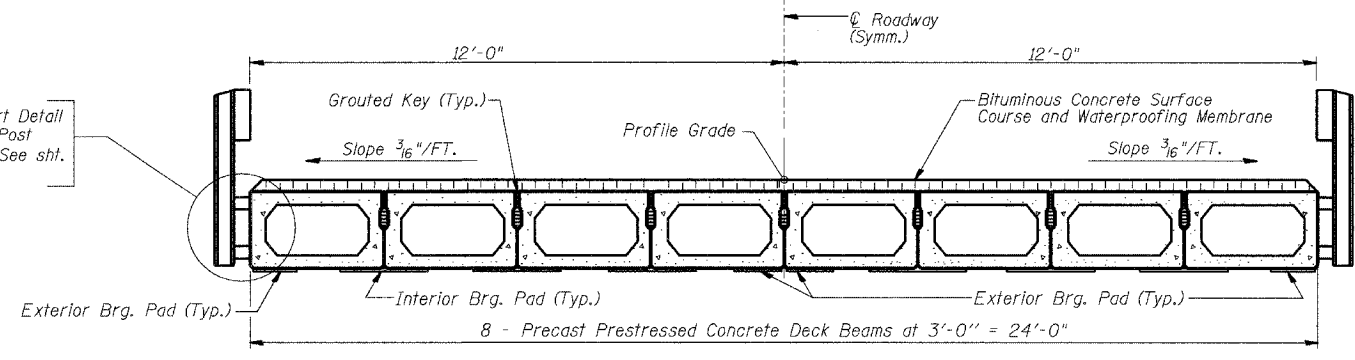


BAR D

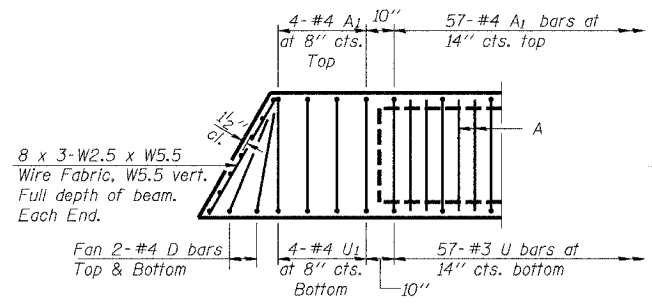


BAR U & U1

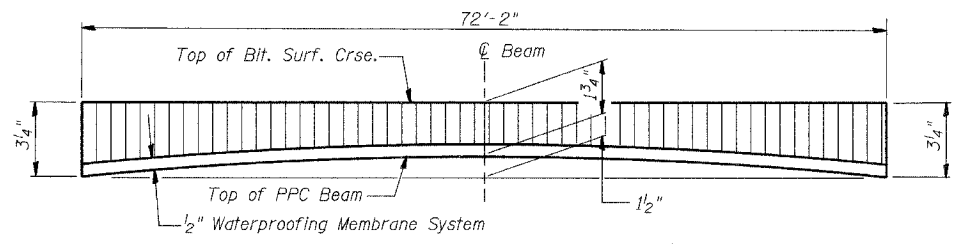
For Insert Detail and Rail Post Spacing, See sht. 4 of 5.



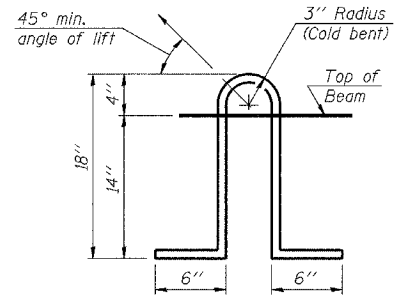
CROSS SECTION



END PLAN



ANTICIPATED CAMBER DIAGRAM



LIFTING LOOP DETAIL

NOTES

Prestressing steel shall be uncoated high strength, low relaxation 7-wire strand, Grade 270. The nominal diameter shall be 1/2 inch and the nominal cross-sectional area shall be 0.153 sq. in. Lifting loops shall be 3-1/2 inch phi-270 ksi strands, as shown. The 1 inch rods in the transverse tie assembly shall be tightened to a snug fit and the threads set. Pockets that receive transverse tie bar on outside shall be filled with grout after transverse tie assembly is in place. Non prestressing steel shall conform to AASHTO M-31 or M-322 Grade 60. The bearing seat surfaces shall be adjusted by shimming to assure firm and even bearing. Two 1/8 inch fabric adjusting shims of the dimensions of the Exterior Bearing Pad shall be provided for each bearing. Keyway surfaces shall be cleaned to remove form oil or other bond breaking material prior to shipment of the beams. Cleaning shall be done by sandblasting the keyway areas between top of the beam and the bottom edge of the key. Corrosion Inhibitor, as covered in the Special Provisions, shall be used in the concrete for precast prestressed concrete deck beams. Required Release Strength, f'ci, shall be 4,000 p.s.i.

BILL OF MATERIAL

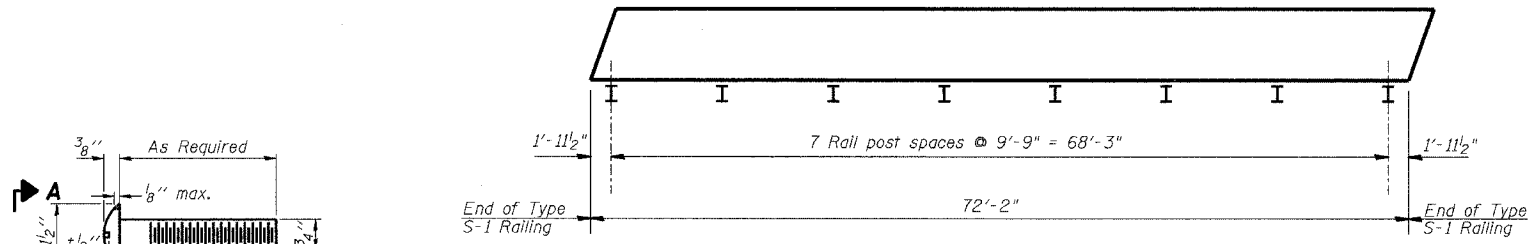
Bar	No.	Size	Length	Shape
Precast Prestressed Conc. Deck Bms.		Sq. Ft.	1732	

SUPERSTRUCTURE

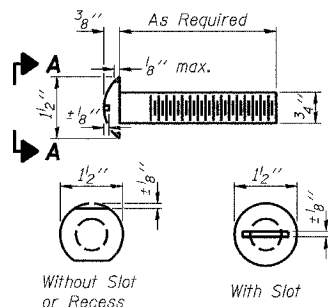
Date	Designed MJP	C.H. 54 OVER DRAINAGE DITCH SECTION 05-00197-00-BR MACON COUNTY STA. 15+61.42 PROP. STR. NO. 058-3379	Sheet No.
Revisions	Drawn BKN		2
	Checked KWB		
	Approved KWB		
Prepared by: URS	3040 North University Avenue Decatur, IL 62526		of 4 URS Job No. 36431470

ROUTE NO.	SECTION	COUNTY	TOTAL SHEETS	SHEET NO.
C.H. 54	05-00197-00-BR	MACON	ii	10
FED. ROAD DIST. NO.	ILLINOIS	PROJECT		

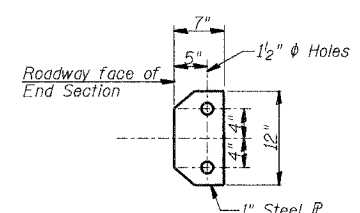
CONTRACT NO. 91344



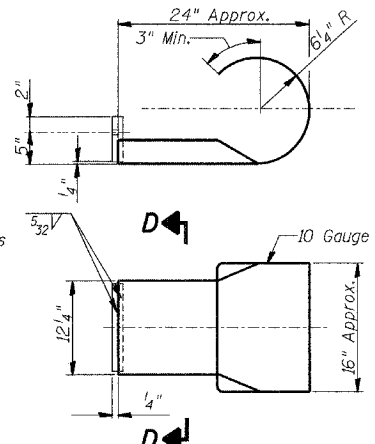
PLAN VIEW - EXTERIOR BEAM
(Showing Rail Post Spacing)



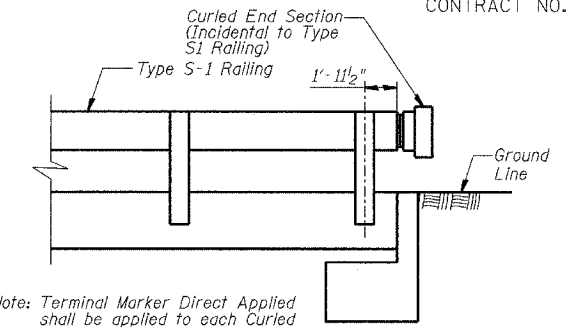
VIEW A-A ROUND HEAD BOLT



SECTION D-D



CURLLED END SECTION DETAILS
(4 Required)

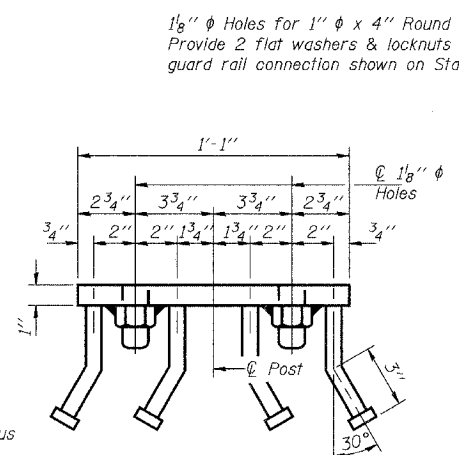


Note: Terminal Marker Direct Applied shall be applied to each Curled End Section. (Incidental Construction)

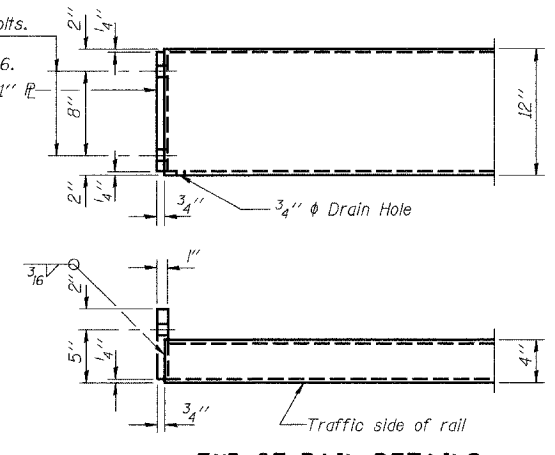
NOTES

Hollow structural sections shall conform to the requirements of ASTM designation A 500 Grade B Structural Steel Tubing and shall meet the longitudinal CVN requirements of 15 ft-lbs at 0° F.
 All other steel shapes and plates shall conform to the requirements of AASHTO M 270 Grade 36 except posts and angles shall conform to AASHTO M 270, Grade 50.
 Bolts, cap screws, and nuts shall conform to the requirements of ASTM designation A 307 except for high strength bolts, nuts and washers noted which shall conform to AASHTO M 164.
 All bolts, nuts, cap screws, washers and lock washers shall be galvanized according to AASHTO M 232.
 All posts, railing, rail splices, anchor devices and angles shall be galvanized after shop fabrication according to AASHTO M 111 and ASTM A 385. Galvanized rail shall not be painted.
 Railing shall be according to Section 509 of the Standard Specifications, except as noted, and will be paid for at the contract unit price per foot for STEEL RAILING, TYPE S-1.
 All field drilled holes shall be coated with an approved zinc rich paint before erection.
 The 1/2" x 7" x 6" plates that come in contact with concrete shall either receive two coats of asphalt paint conforming to Section 1060.07 Type II, or 1/8" fabric bearing pads shall be placed between the plates and concrete.
 The 3/4" high strength bolts used to connect the 6 x 4 x 3/4 angles to the post shall be tightened according to Article 505.04(F)(2) of the Standard Specifications. The 1" high strength bolts connecting the angles to the concrete shall be tightened to a snug fit and given an additional 1/8 turn. The 5/8" cap screws in bottom of posts shall be tightened to a snug fit only.
 For multi-span bridges, sufficient 1/4" x 6" x 1'-2" galvanized steel shims shall be provided to align rail between adjacent spans. Cost included with STEEL RAILING, TYPE S-1.

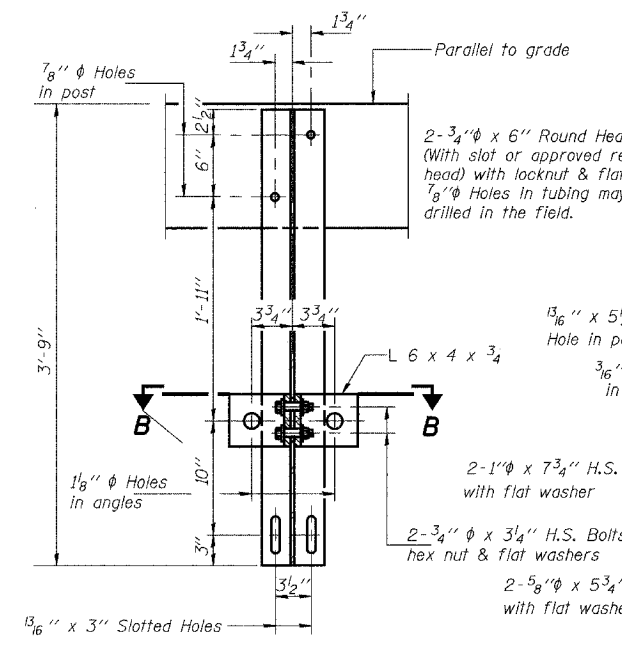
1/8" φ Holes for 1" φ x 4" Round Head Bolts. Provide 2 flat washers & locknuts for guard rail connection shown on Std. 631026.



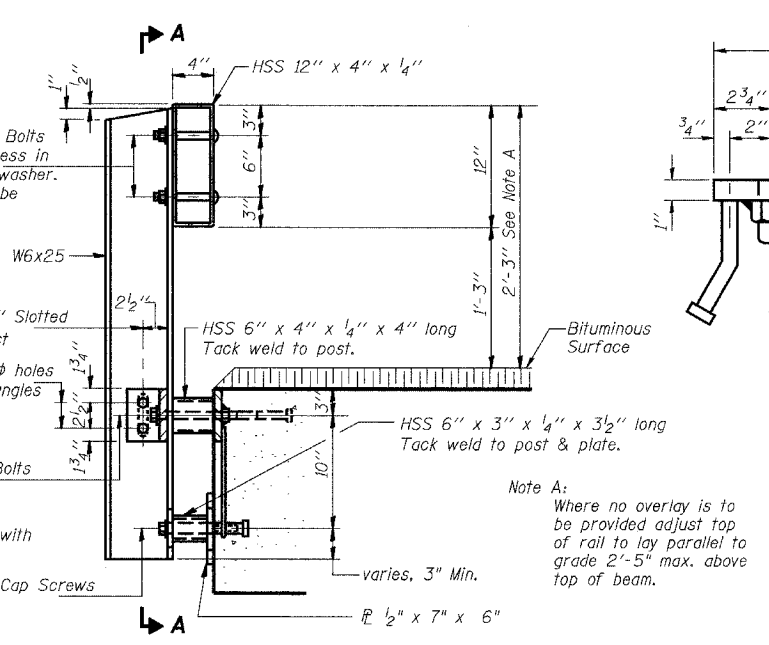
VIEW C-C



END OF RAIL DETAILS



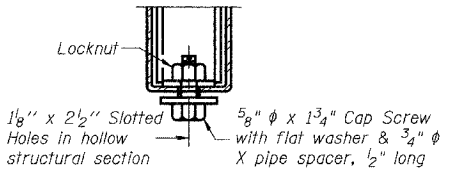
SECTION A-A



SECTION AT RAIL POST

** Whenever the lower insert assemblies interfere with strand locations, the #3 bars shall be cut and adjusted in order to allow raising or lowering of the lower inserts. Maximum adjustment not to exceed 1/2".

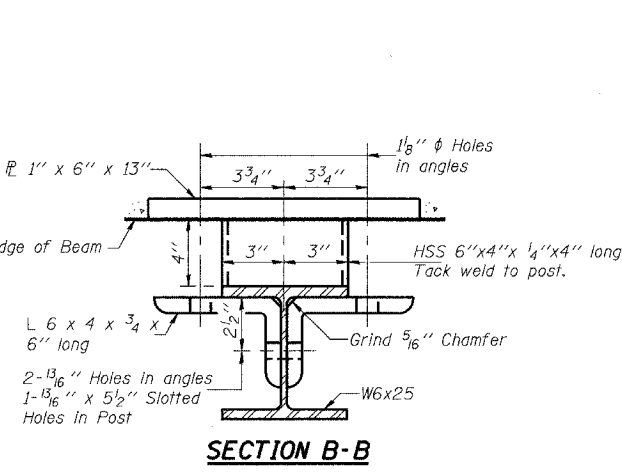
Note A: Where no overlay is to be provided adjust top of rail to lay parallel to grade 2'-5" max. above top of beam.



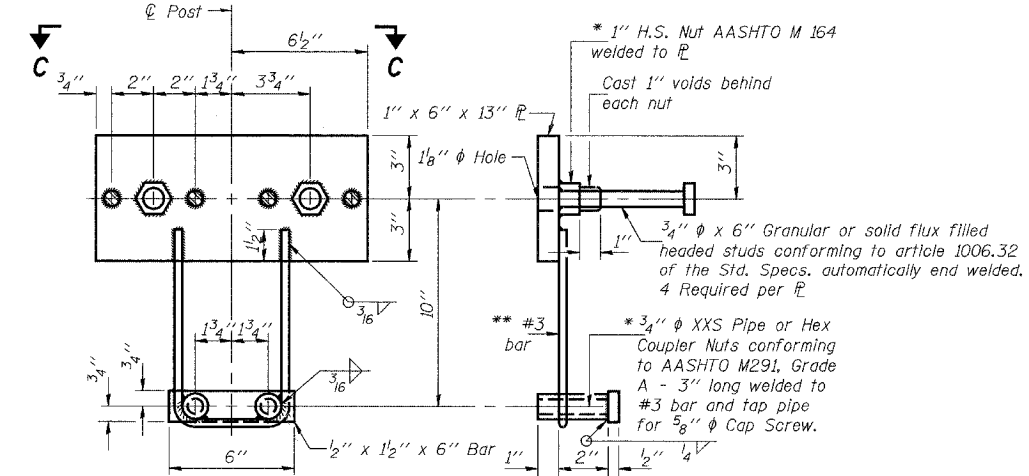
RAIL SPLICE CONNECTION AT EXPANSION JT.

BILL OF MATERIAL

Item	Unit	Quantity
Steel Railing Type S-1	Foot	145

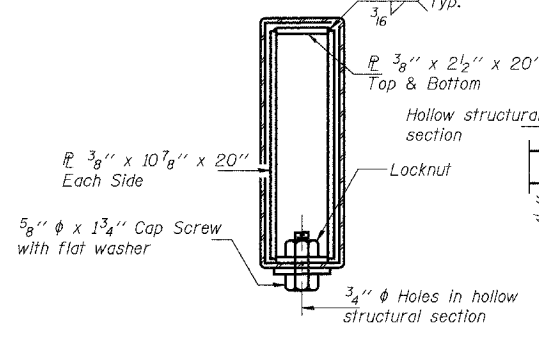


SECTION B-B

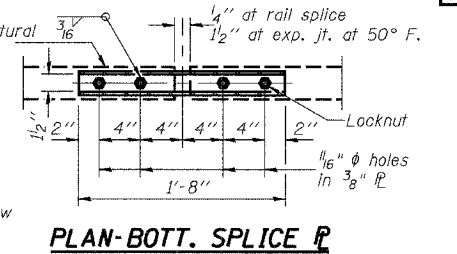


ANCHOR DEVICE

* Threaded areas shall be plugged or blocked off during casting of beam.



SECTIONS AT RAIL SPLICE



PLAN-BOTT. SPLICE R TYPICAL

STEEL RAILING

Date	Designed BKN	C.H. 54 OVER DRAINAGE DITCH SECTION 05-00197-00-BR MACON COUNTY STA. 15+61.42 PROP. STR. NO. 058-3379	Sheet No.
Revisions	Drawn BKN		3
	Checked KWB		of 4
	Approved KWB		URS Job No. 36431470
Prepared by:	URS 3040 North University Avenue Decatur, IL 62526		

