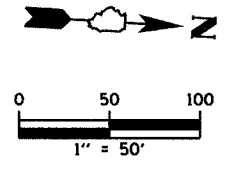
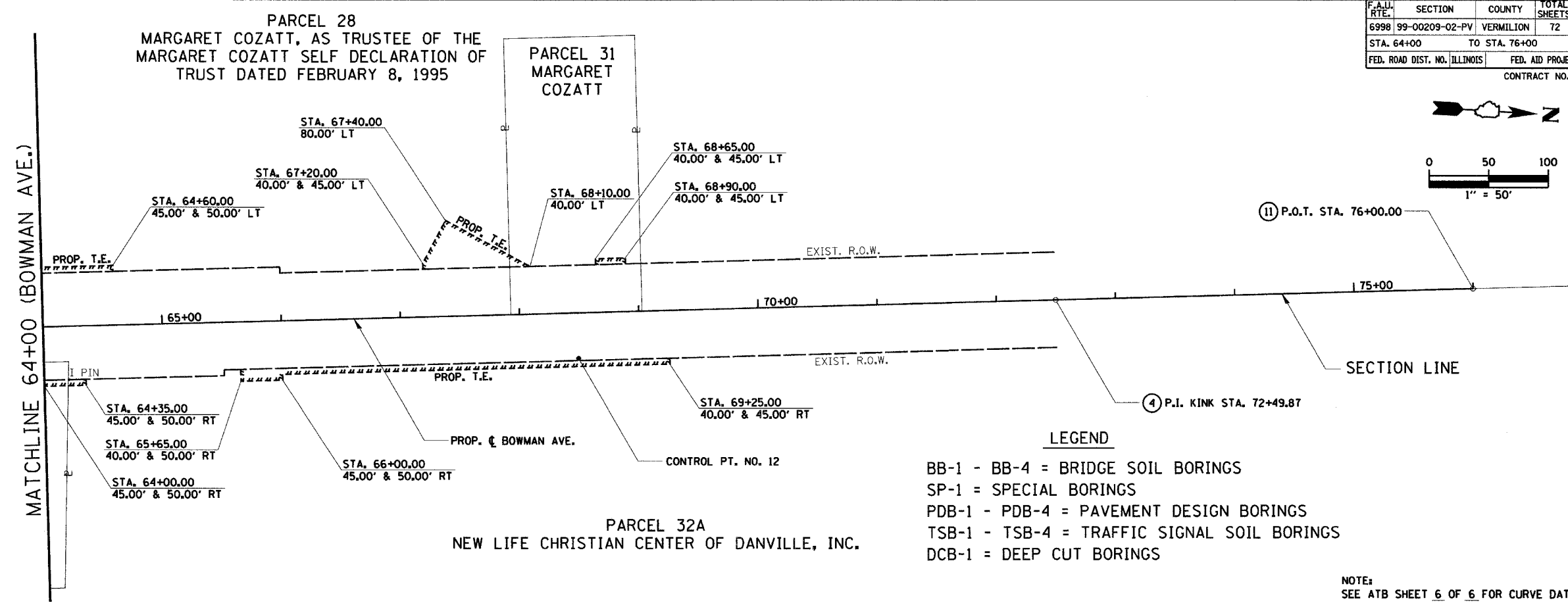


PLAN	SURVEYED	DATE
	PLOTTED	BY
	CHECKED	
	RT. OF WAY CHECKED	
	NO. OF WAY CHECKED	
	CADD FILE NAME	
	NO.	

PLAN	SURVEYED	DATE
	PLOTTED	BY
	CHECKED	
	RT. OF WAY CHECKED	
	NO. OF WAY CHECKED	
	CADD FILE NAME	
	NO.	

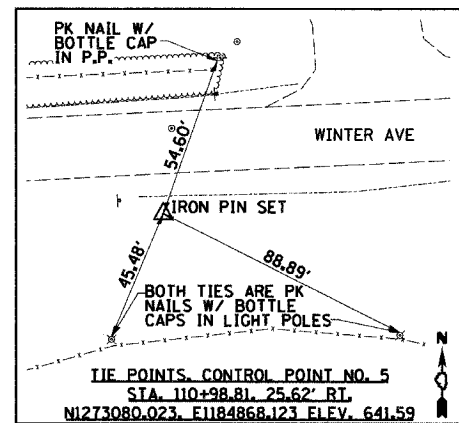
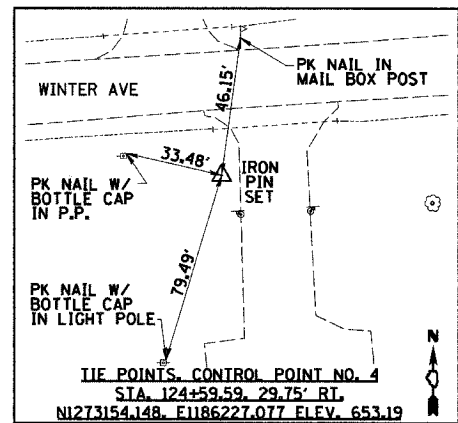
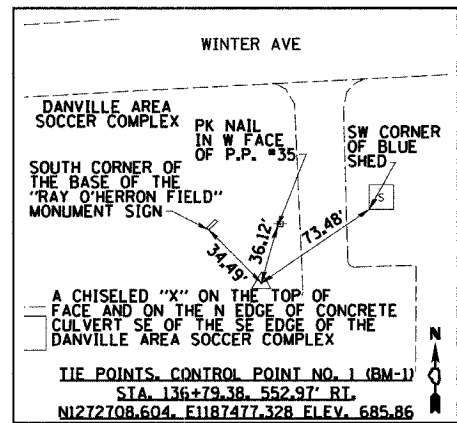
F.A.I.D. RTE.	SECTION	COUNTY	TOTAL SHEETS	SHEET NO.
6998	99-00209-02-PV	VERMILION	72	14
STA. 64+00	TO STA. 76+00			
FED. ROAD DIST. NO. ILLINOIS	FED. AID PROJECT-			
CONTRACT NO.: 91356				



LEGEND

- BB-1 - BB-4 = BRIDGE SOIL BORINGS
- SP-1 = SPECIAL BORINGS
- PDB-1 - PDB-4 = PAVEMENT DESIGN BORINGS
- TSB-1 - TSB-4 = TRAFFIC SIGNAL SOIL BORINGS
- DCB-1 = DEEP CUT BORINGS

NOTE:
SEE ATB SHEET 6 OF 6 FOR CURVE DATA.



CONTROL POINT NO. 2, NO TIE POINTS
STA. 136+86.32, 28.08' RT.
N1273232.886, E1187451.286 ELEV. 688.85

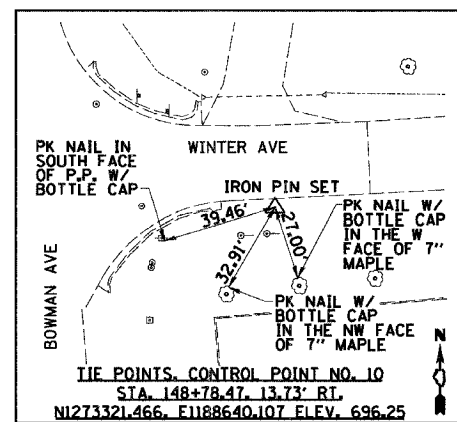
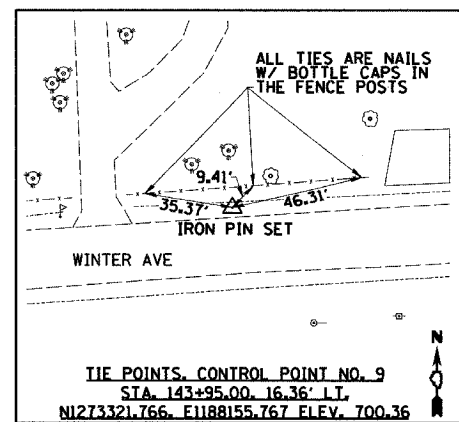
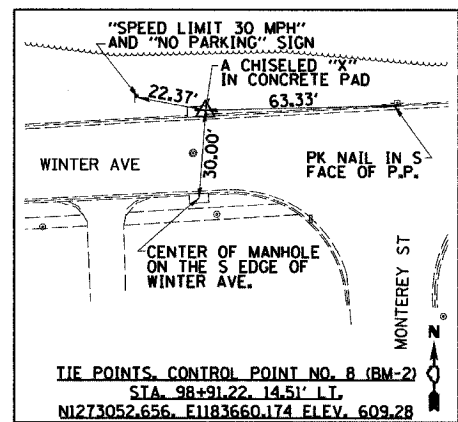
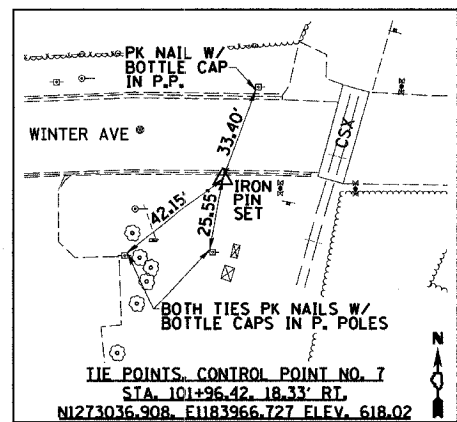
CONTROL POINT NO. 3, NO TIE POINTS
STA. 128+51.94, 44.13' RT.
N1273164.451, E1186619.556 ELEV. 670.56

CONTROL POINT NO. 6, NO TIE POINTS
STA. 107+40.22, 9.34' LT.
N1273094.904, E1184508.140 ELEV. 618.14

CONTROL POINT NO. 11, NO TIE POINTS
STA. 147+66.21, 1047.44' RT.
N1272283.390, E1188593.080 ELEV. 696.72

CONTROL POINT NO. 12, NO TIE POINTS
STA. 148+11.34, 661.57' LT.
N1273992.016, E1188535.650 ELEV. 698.64

CONTROL POINT NO. 13, NO TIE POINTS
STA. 152+91.32, 24.41' LT.
N1273382.438, E1189050.214 ELEV. 695.93



TEMPORARY BENCHMARK DESCRIPTIONS:
TBM-1: STA. 117+50, 141' RT. (WINTER AVE.)
NE CORNER OF HANDHOLD EAST OF EAST PAVILION
FOR PLAYGROUND NEAR LIGHT POLE NO. 40.
ELEV. = 637.31
TBM-2: STA. 125+49.15, 156.80' RT. (WINTER AVE.)
NE BOLT OF LIGHT POLE FOR SOCCER FIELD SOUTH
OF FLAG POLE AT AUTOZONE FIELD.
ELEV. = 666.07
TBM-3: STA. 60+98.27, 32.73' RT. (BOWMAN AVE.)
HEADBOLT CLOSEST TO THE "M" IN MUELLER ON FIRE
HYDRANT IN THE SE QUADRANT OF THE WINTER AVE.
AT BOWMAN AVE. INTERSECTION.
ELEV. = 698.68

POINT LOCATION	COORDINATES	
	NORTHING	EASTING
TRO1 P.O.T. STA. 104+11.39 (INTERIM PVMT.)	1,273,054.35	1,184,182.01
① P.O.T. STA. 94+96.37 (WINTER)	1,273,016.12	1,183,266.75
② P.I. KINK STA. 147+93.37 (WINTER) P.O.T. STA. 61+87.86 (BOWMAN)	1,273,330.47	1,188,554.38
③ P.O.T. STA. 157+93.36 (WINTER)	1,273,385.89	1,189,552.84
④ P.I. KINK STA. 72+49.87 (BOWMAN)	1,274,388.57	1,188,463.34
⑤ P.O.T. STA. 198+99.22 (BICYCLE PATH)	1,273,016.12	1,183,671.11
⑥ P.I. KINK STA. 201+74.13 (BICYCLE PATH)	1,273,031.47	1,183,945.58
⑦ P.I. KINK STA. 202+24.67 (BICYCLE PATH)	1,273,026.86	1,183,995.92
⑧ P.O.T. STA. 248+55.02 (BICYCLE PATH)	1,273,286.24	1,188,615.81
⑨ P.O.T. STA. 20+00.00 (PARK ENT.)	1,272,863.81	1,187,508.10
⑩ P.O.T. STA. 137+19.84 (WINTER) P.O.T. STA. 24+00.00 (PARK ENT.)	1,273,263.02	1,187,482.97
⑪ P.O.T. STA. 76+00.00 (BOWMAN)	1,274,737.41	1,188,433.31

REVISIONS	
NAME	DATE

CITY OF DANVILLE, ILLINOIS
WINTER AVENUE RECONSTRUCTION
ALIGNMENT, TIES, R.O.W.,
EASEMENTS & BENCHMARKS
BOWMAN AVENUE
STA. 64+00 TO STA. 76+00
SCALE: 1" = 50'
DATE: 12/30/05
DRAWN BY: NIL
CHECKED BY: SMK