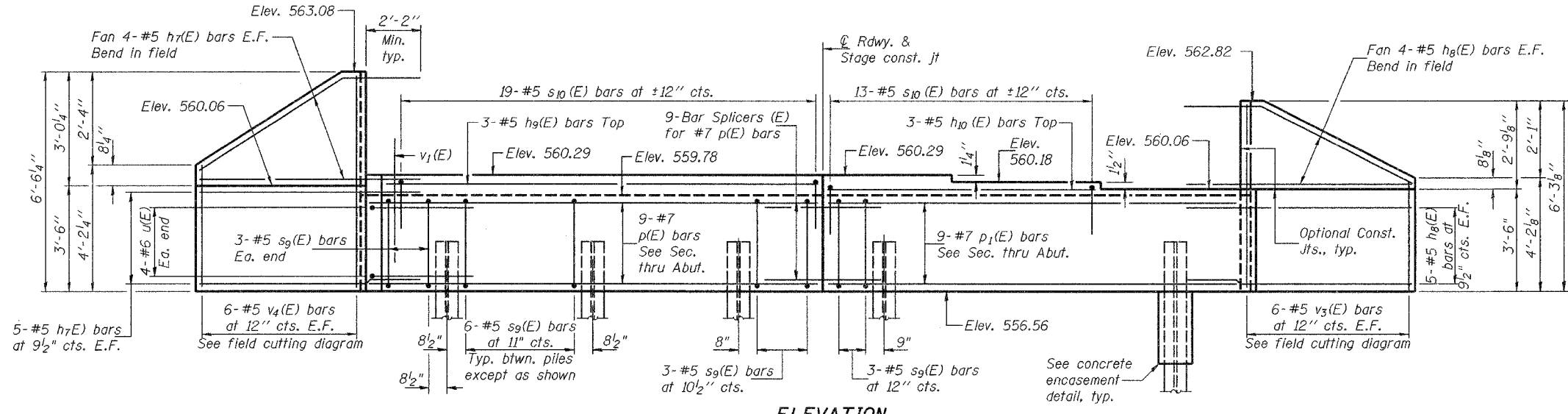


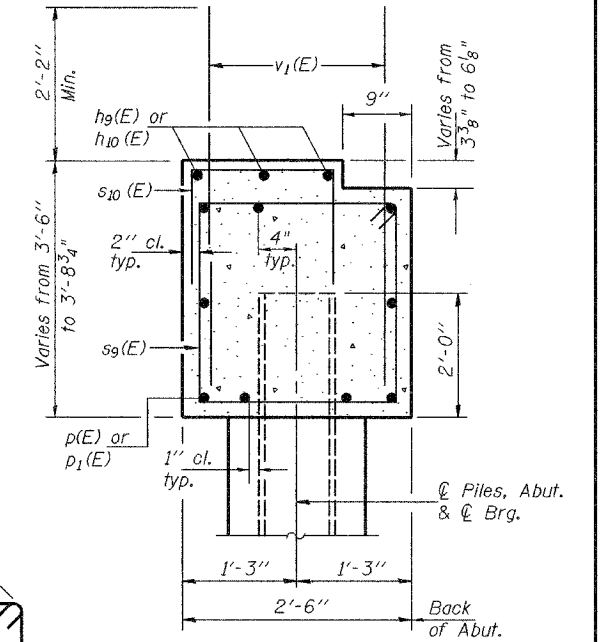
STATE OF ILLINOIS
DEPARTMENT OF TRANSPORTATION

ROUTE NO.	SECTION	COUNTY	SHEET NO.	SHEET NO. 17
FAP 777	10B-1	MONTGOMERY	104	69
FED. ROAD DIST. NO. 7	ILLINOIS	FED. AID PROJECT-		23 SHEETS

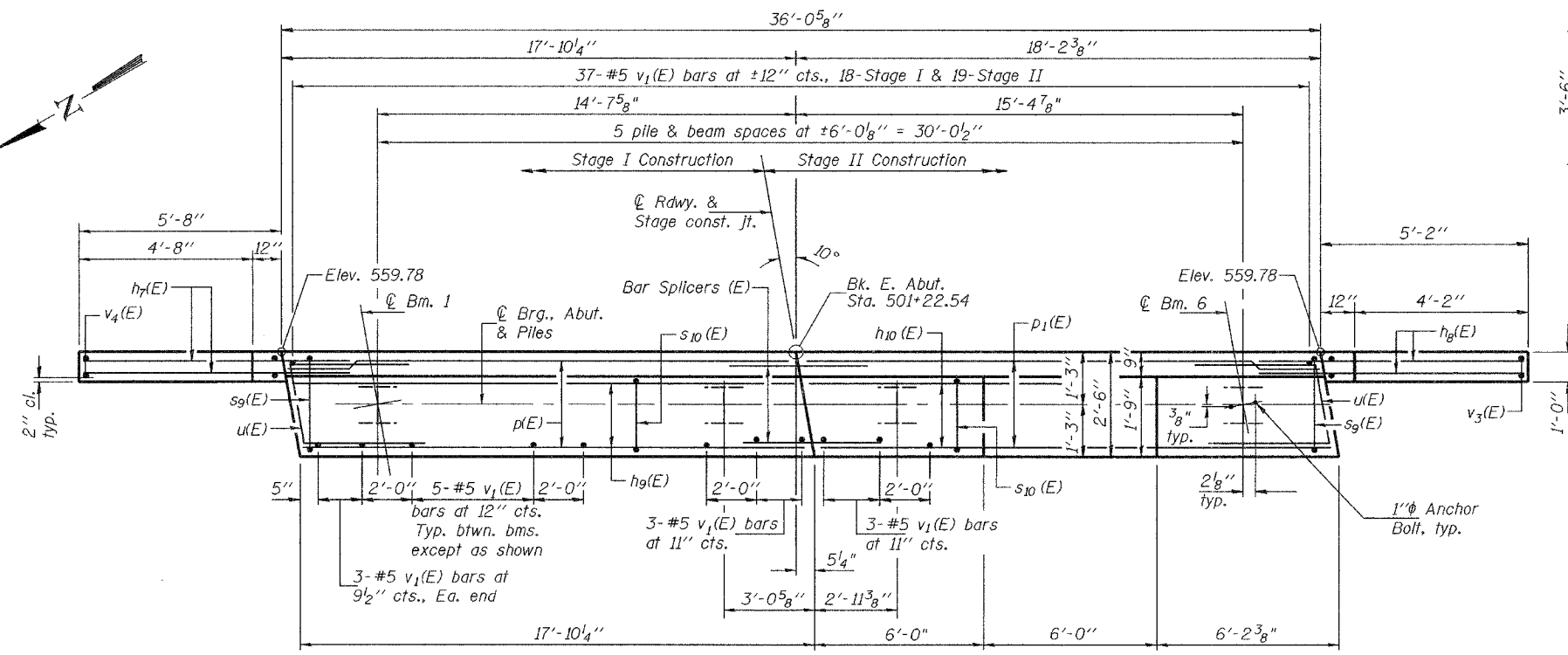
Contract #92667



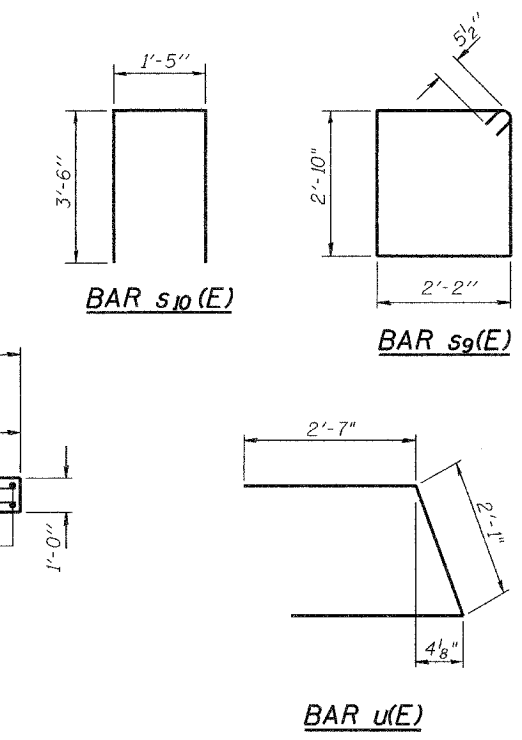
ELEVATION



SEC. THRU ABUT.
Dimensions are at Rt. L's



PLAN



BAR s₁₀(E)

BAR s₉(E)

BAR u(E)

BILL OF MATERIAL

Bar No.	Size	Length	Shape
h ₇ (E)	18 #5	8'-5"	
h ₈ (E)	18 #5	7'-10"	
h ₉ (E)	3 #5	17'-6"	
h ₁₀ (E)	3 #5	11'-9"	
p ₁ (E)	9 #7	17'-6"	
p ₁ (E)	9 #7	17'-10"	
s ₉ (E)	36 #5	10'-11"	
s ₁₀ (E)	32 #5	8'-5"	
u(E)	8 #6	7'-3"	
v ₁ (E)	69 #5	4'-4"	
v ₃ (E)	12 #5	9'-11"	
v ₄ (E)	12 #5	10'-2"	
Structure Excavation	Cu. Yd.	72.5	
Concrete Structures	Cu. Yd.	15.6	
Reinforcement Bars, Epoxy Coated	Pound	2390	
Furnishing Steel Piles HPBx36	Foot	204	
Driving Steel Piles	Foot	204	

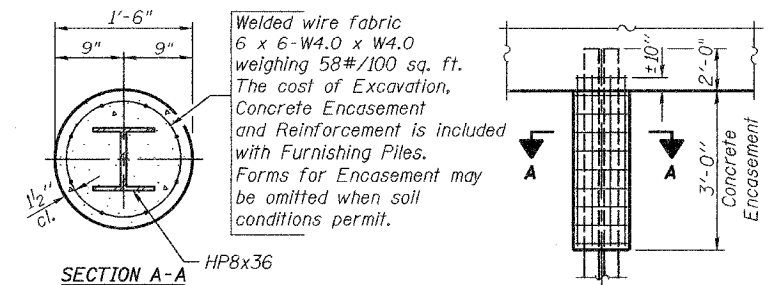
Notes:
Pour steps monolithically with cap.
Reinforcement bars designated (E) shall be epoxy coated.
Space reinforcement in cap to miss anchor bolts.
For anchor bolt installation details see sheet 15 of 23.
For bar splicer details see sheet 20 of 23.

DESIGNED	Daniel F. Zerrusen
CHECKED	Stephen M. Ryan
DRAWN	R. Doty h.f. duong
CHECKED	DFZ/SMR

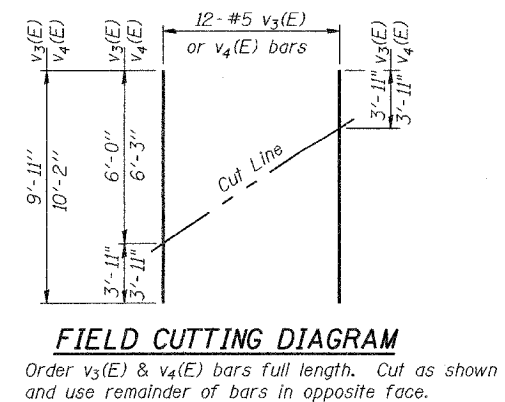
EXAMINED	Thomas J. Damgalabki	Feb 3, 2006
PASSED	Ralph E. Anderson	

PILE DATA

Type:	Steel HPBx36
Capacity:	Driven to Refusal
Est. Length:	34'
No. Required:	6



PILE ENCASEMENT DETAIL



FIELD CUTTING DIAGRAM
Order v₃(E) & v₄(E) bars full length. Cut as shown and use remainder of bars in opposite face.

EAST ABUTMENT
F.A.P. ROUTE 777 SECTION 10B-1
MONTGOMERY COUNTY
STATION 500+44.04
STRUCTURE NO. 068-0505