

F.A.P. RTE.	SECTION	COUNTY	TOTAL SHEETS	SHEET NO.
327	13B-1 & 13B-2	MARION	78	1

STATE OF ILLINOIS  
DEPARTMENT OF TRANSPORTATION

DIVISION OF HIGHWAYS

**PROPOSED  
HIGHWAY PLANS**

FAP ROUTE 327 (U.S. 50)

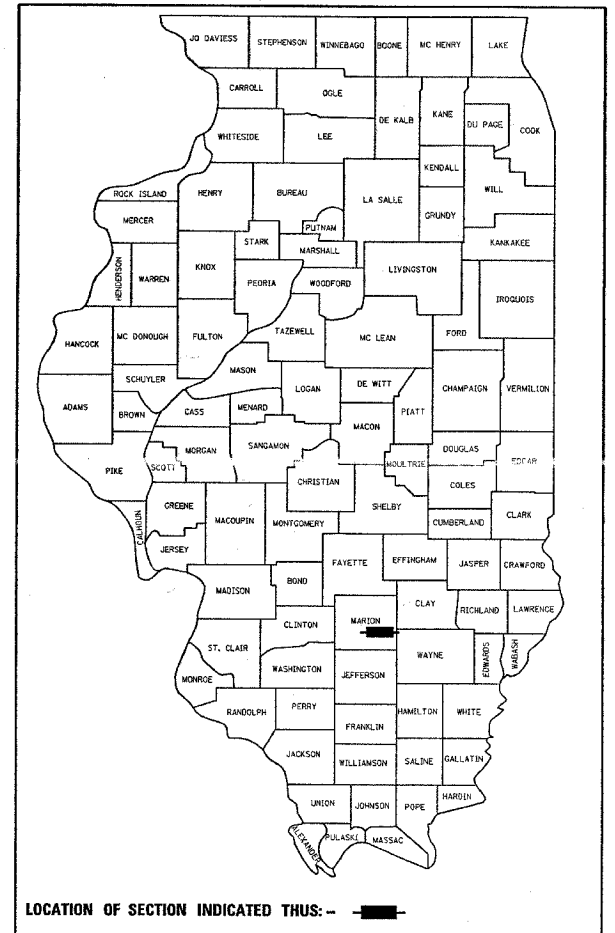
SECTION 13B-1 & 13B-2

PROJECT: BRF-0327(036)

**MARION COUNTY  
BRIDGE REPLACEMENT**

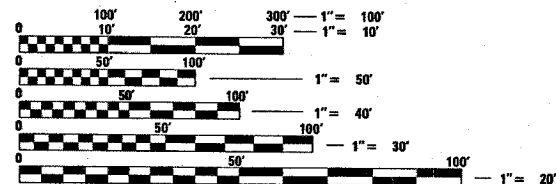
C-97-082-02

D-97-035-02



FOR INDEX OF SHEETS, SEE SHEET NO. 2

ADT (2003) - 2750

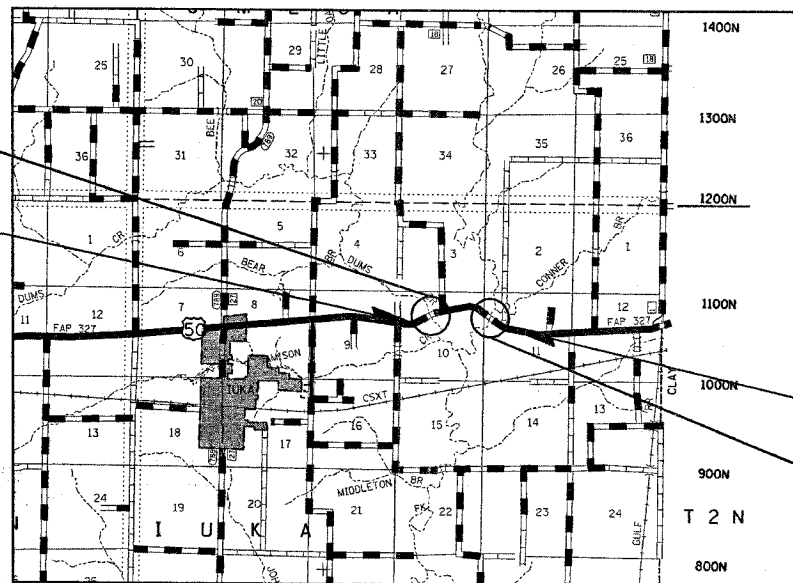


FULL SIZE PLANS HAVE BEEN PREPARED USING STANDARD ENGINEERING SCALES. REDUCED SIZED PLANS WILL NOT CONFORM TO STANDARD SCALES. IN MAKING MEASUREMENTS ON REDUCED PLANS, THE ABOVE SCALES MAY BE USED.

J.U.L.I.E.  
JOINT UTILITY LOCATION INFORMATION FOR EXCAVATION  
1-800-892-0123

STRUCTURE  
#061-0090 (PROP.)  
041-004D (EXIST.)

PROJECT BEGINS  
STA 331+00



PROJECT ENDS  
STA 379+10

STRUCTURE  
#061-0091 (PROP.)  
041-0041 (EXIST.)

STATE OF ILLINOIS  
DEPARTMENT OF TRANSPORTATION  
DIVISION OF HIGHWAYS

SUBMITTED Dec 22, 20 05  
Christ H. Reed  
DEPUTY DIRECTOR OF HIGHWAYS, REGION ENGINEER

February 3, 20 06  
Mike Hine  
ENGINEER OF DESIGN AND ENVIRONMENT

February 3, 20 06  
Milton R. Sees P.E.  
DIRECTOR OF HIGHWAYS, CHIEF ENGINEER

**PRINTED BY THE AUTHORITY  
OF THE STATE OF ILLINOIS**

GROSS LENGTH = 4810.00 FEET = 0.91 MILES  
NET LENGTH = 1380.00 FEET = 0.26 MILES

CONTRACT NO. 94964 TOWNSHIP : IUKA

c:\projects\94964\d\03502\pa.dgn  
 2/22/2005  
 District

PROJECT ENGINEER : MARK DAUGHERTY  
 SQUAD LEADER : KRISTI SANDSCHAFER  
 DESIGNER : KRISTI SANDSCHAFER  
 TELEPHONE : 217/342-3951 EX 313