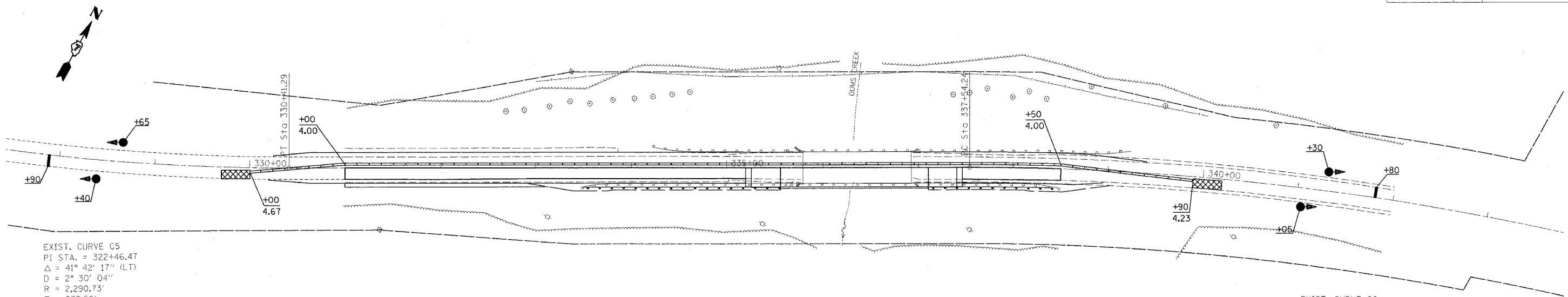


F.A.P. RTE.	SECTION	COUNTY	TOTAL SHEETS	SHEET NO.
327	13B-1813B-2	MARION	78	14
STA.		TO STA.		
FED. ROAD DIST. NO.		ILLINOIS	FED. AID PROJECT	

teasleyck
 12/23/2005
 c:\projects\94964\d03502pa.dgn



EXIST. CURVE C5
 PI STA. = 322+46.47
 $\Delta = 41^\circ 42' 17''$ (LT)
 $D = 2^\circ 30' 04''$
 $R = 2,290.73'$
 $T = 872.56'$
 $L = 1,667.39'$
 $E = 160.56'$
 $e =$ MATCH EXISTING 0.0585'/FT (255' TRANSITION)
 S.E. ATTAIN: 312+03.80 - 314+58.80
 S.E. REMOVE: 329+56.19 - 332+11.19
 P.C. STA. = 313+73.90
 P.T. STA. = 330+41.29

EXIST. CURVE C6
 PI STA. = 342+35.83
 $\Delta = 19^\circ 07' 55''$ (RT)
 $D = 2^\circ 00' 18''$
 $R = 2,857.67'$
 $T = 481.59'$
 $L = 954.22'$
 $E = 40.30'$
 $e =$ MATCH EXISTING 0.0300'/FT
 $T.R. = 40.00'$
 S.E. RUN = STA. 336+70.50 TO STA. 338+50.00
 *MATCH EXISTING CROSS SLOPES AT THIS LOCATION.
 P.C. STA. = 337+54.24
 P.T. STA. = 347+08.46

PAVED SHOULDER REMOVAL

LT STA 330+25 to 335+79 = 269 SQ YD
 LT STA 336+92 to 339+40 = 98 SQ YD
 RT STA 330+20 to 335+79 = 201 SQ YD
 RT STA 336+92 to 338+95 = 72 SQ YD
 TOTAL = 640 SQ YD

BASE COURSE WIDENING 10"

LT STA 330+25 to 335+79 = 270 SQ YD
 LT STA 336+92 to 339+40 = 124 SQ YD
 RT STA 330+20 to 335+20 = 240 SQ YD
 RT STA 337+47 to 338+95 = 58 SQ YD
 TOTAL = 692 SQ YD

TEMPORARY CONCRETE BARRIER

STA 330+00 to 331+00 = 100 FT
 STA 331+00 to 338+50 = 750 FT
 STA 338+50 to 339+90 = 140 FT
 TOTAL = 990 FT

IMPACT ATTENUATORS TEMPORARY (NON-REDIRECTIVE), TEST LEVEL 3

STA 330+00 = 1 EACH
 STA 339+90 = 1 EACH
 TOTAL = 2 EACH

GUARDRAIL REMOVAL

RT STA 333+47.40 to 338+49.78 = 502.5 FT

PAVEMENT REMOVAL

RT STA 335+19.50 to 335+79 = 79 SQ YD
 RT STA 336+92 to 337+46.50 = 72 SQ YD
 TOTAL = 151 SQ YD

BRIDGE APPROACH PAVEMENT

RT STA 335+25.50 to 335+55.50 = 68.25 SQ YD
 RT STA 337+10.50 to 337+40.50 = 68.25 SQ YD
 TOTAL = 136.50 SQ YD

BRIDGE APPROACH PAVEMENT CONNECTOR (FLEXIBLE)

RT STA 335+19.50 to 335+25.50 = 13.75 SQ YD
 RT STA 337+40.50 to 337+46.50 = 13.75 SQ YD
 TOTAL = 27.50 SQ YD

BITUMINOUS SHOULDERS SUPERPAVE

RT STA 332+90.25 to 335+55.50 = 60 TONS
 RT STA 337+10.50 to 339+02.00 = 45 TONS
 TOTAL = 105 TONS

TRAFFIC BARRIER TERMINAL, TYPE 6

EB APPROACH = 1 EACH
 EB DEPARTURE = 1 EACH
 TOTAL = 2 EACH

STEEL PLATE BEAM GUARD RAIL, TYPE A

EB APPROACH = 125 FT
 EB DEPARTURE = 50 FT
 TOTAL = 175 FT

TRAFFIC BARRIER TERMINAL, TYPE 1, SPECIAL (TANGENT)

EB APPROACH = 1 EACH
 EB DEPARTURE = 1 EACH
 TOTAL = 2 EACH

GUARDRAIL MARKERS, TYPE A

EB APPROACH = 2 EACH
 EB DEPARTURE = 1 EACH
 TOTAL = 3 EACH

BARRIER WALL MARKERS, TYPE B

SOUTH PARAPET WALL = 2 EACH

PERIMETER EROSION BARRIER

RT STA 331+50 to 335+50 = 400 FT
 RT STA 337+25 to 338+75 = 150 FT
 TOTAL = 550 FT

TEMPORARY EROSION CONTROL SEEDING

RT SIDE = 35 POUNDS

TEMPORARY DITCH CHECKS

SE QUADRANT = 1 EACH
 SW QUADRANT = 1 EACH
 TOTAL = 2 EACH

LEGEND

- TEMPORARY IMPACT ATTENUATORS
- TEMPORARY BRIDGE TRAFFIC SIGNALS

STAGE I NOTES

- CONSTRUCT BASE COURSE WIDENING FOR STAGE I TRAFFIC.
- INSTALL TRAFFIC CONTROL ACCORDING TO TRAFFIC CONTROL STANDARD 701321.
- REMOVE STAGE I PORTION OF EXISTING STRUCTURE AND GUARDRAIL.
- CONSTRUCT STAGE I PORTION OF NEW STRUCTURE.
- CONSTRUCT STAGE I EMBANKMENT, BRIDGE APPROACH PAVEMENT, AND BRIDGE APPROACH PAVEMENT CONNECTOR.
- CONSTRUCT STAGE I BINDER AND SURFACE. CONSTRUCT BASE COURSE WIDENING FOR STAGE II TRAFFIC. CONSTRUCT STAGE I BITUMINOUS SHOULDERS, AGGREGATE SHOULDERS, AND GUARDRAIL.

REVISIONS	
NAME	DATE

ILLINOIS DEPARTMENT OF TRANSPORTATION

**STAGE I
CONSTRUCTION
DUMS CREEK**

SCALE: VERT. / HORIZ.
DATE

DRAWN BY
CHECKED BY

PLOT DATE = 12/23/2005
 FILE NAME = c:\projects\94964\d03502pa.dgn
 PLOT SCALE = 1/8" = 1' / IN.
 USER NAME = teasleyck