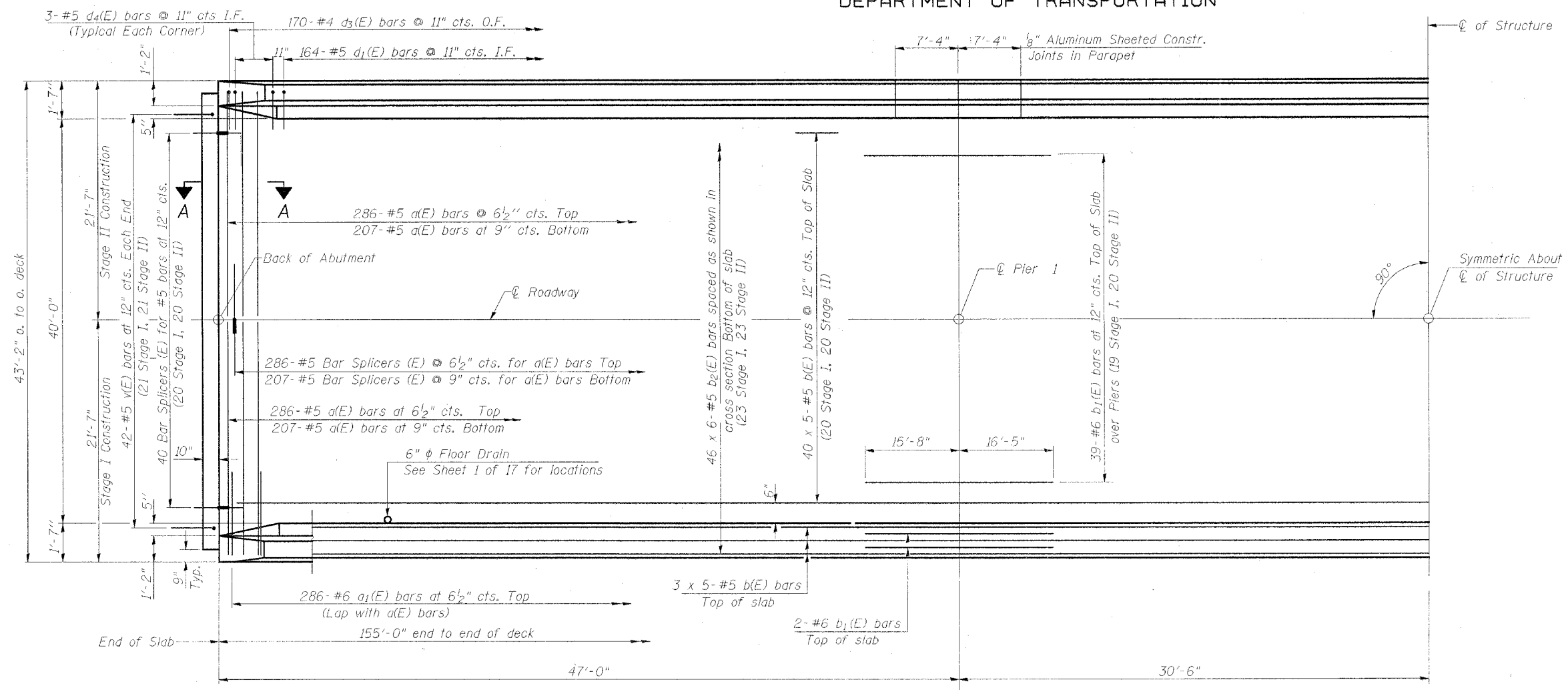


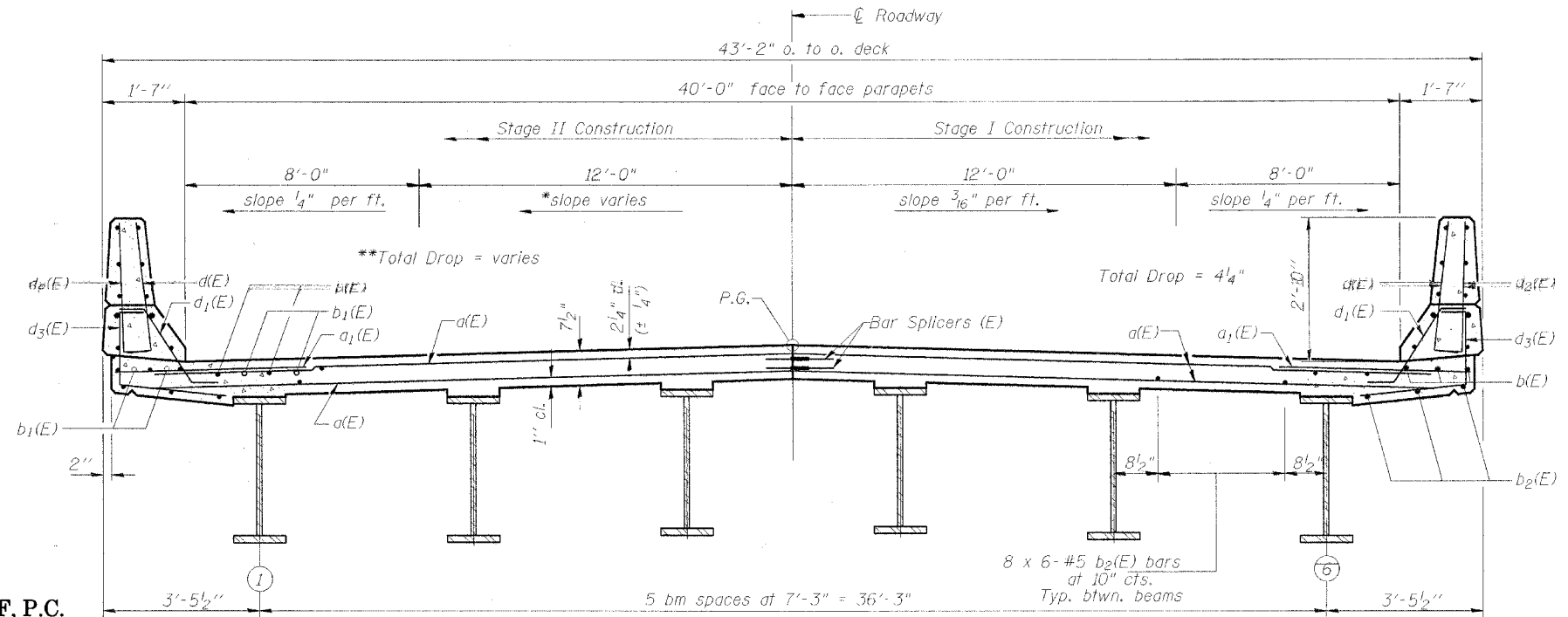
STATE OF ILLINOIS
DEPARTMENT OF TRANSPORTATION

ROUTE NO.	SECTION	COUNTY	TOTAL SHEETS	SHEET NO.	SHEET NO. 6 17 SHEETS
FAP Rte. 327	13B-2	Marion	78	23	
FED. ROAD DIST. NO. 7		ILLINOIS	FED. AID PROJECT		

Contract #94964



HALF PLAN



CROSS SECTION
(Looking East)

NOTES

See sheet 7 of 17 for superstructure details, parapet reinforcement and Bill of Materials.
Reinforcement bars designated (E) shall be epoxy coated.
Bars indicated thus 40 x 5-#5 etc. indicates 40 lines of bars with 5 lengths per line.
See sheet 8 of 17 for abutment diaphragm details and Section A-A.

MIN. BAR LAP
#5 = 1'-8"

* $\frac{3}{16}$ "/ft from Sta. 335+55.50 to Sta. 336+70.50. From Sta. 336+70.50 to Sta. 337+10.50 slope varies from $\frac{3}{16}$ "/ft to 0"/ft.
** $\frac{1}{4}$ " from Sta. 335+55.50 to Sta. 336+70.50. From Sta. 336+70.50 to Sta. 337+10.50 drop varies from $\frac{1}{4}$ " to 2".

DESIGNED	-
CHECKED	-
DRAWN	TFG
CHECKED	CME/BD/MCB

COOMBE-BLOXDORF, P.C.
Engineers/Land Surveyors
Springfield, Illinois
Design Firm License No. 184-002703

SUPERSTRUCTURE
F.A.P. ROUTE 327 - SEC. 13B-2
MARION COUNTY
STATION 336+33.00
STRUCTURE NO. 061-0090