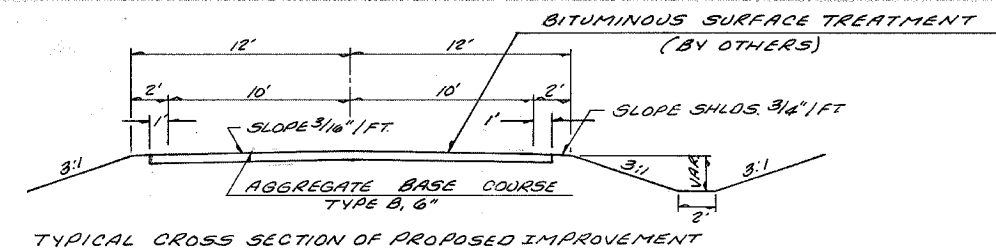
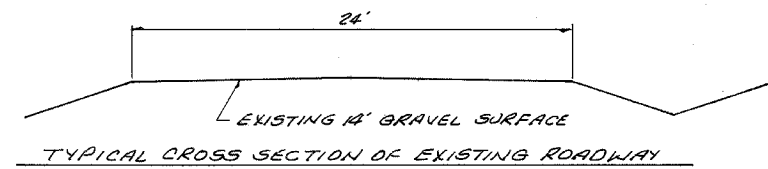


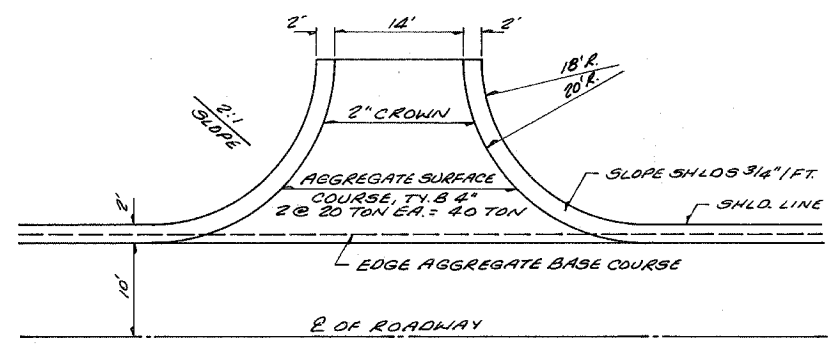
F.A.S. ROUTE NO.	SECTION	COUNTY	TOTAL SHEETS	SHEET
02-0010-00-BR	WAYNE	WAYNE	11	2
STA. 140	TO STA. 540		PROJECT	
FED. ROAD DIST. NO.	ILLINOIS	PROJECT		



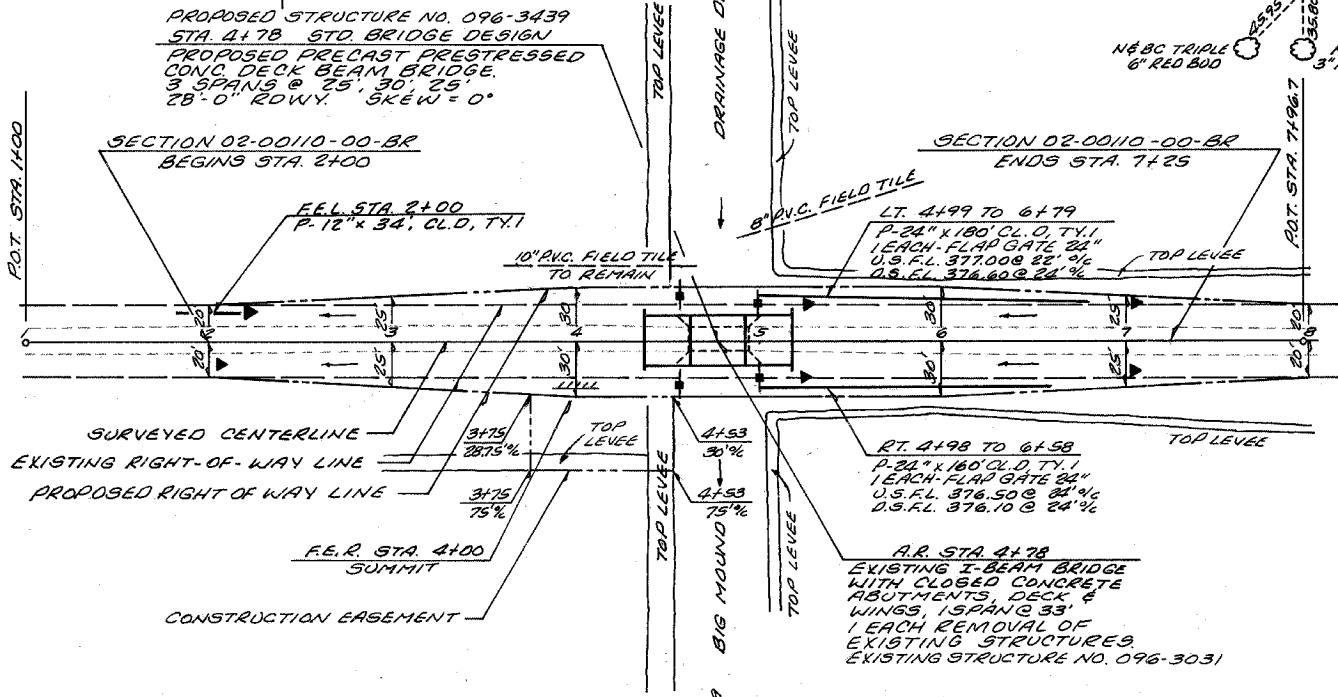
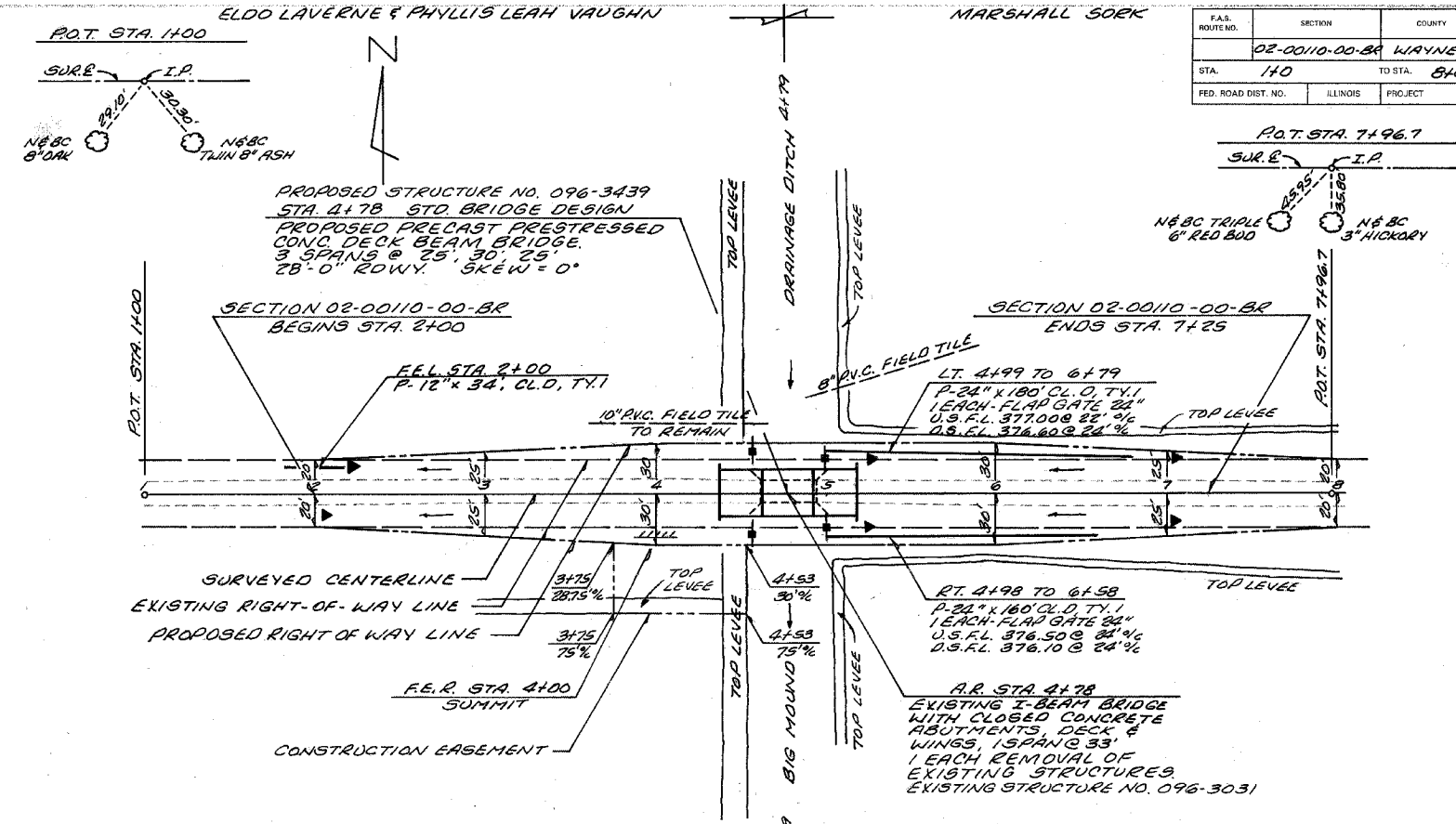
TYPICAL CROSS SECTION OF PROPOSED IMPROVEMENT



TYPICAL CROSS SECTION OF EXISTING ROADWAY



DETAIL OF FIELD ENTRANCE



EARTHWORK SCHEDULE

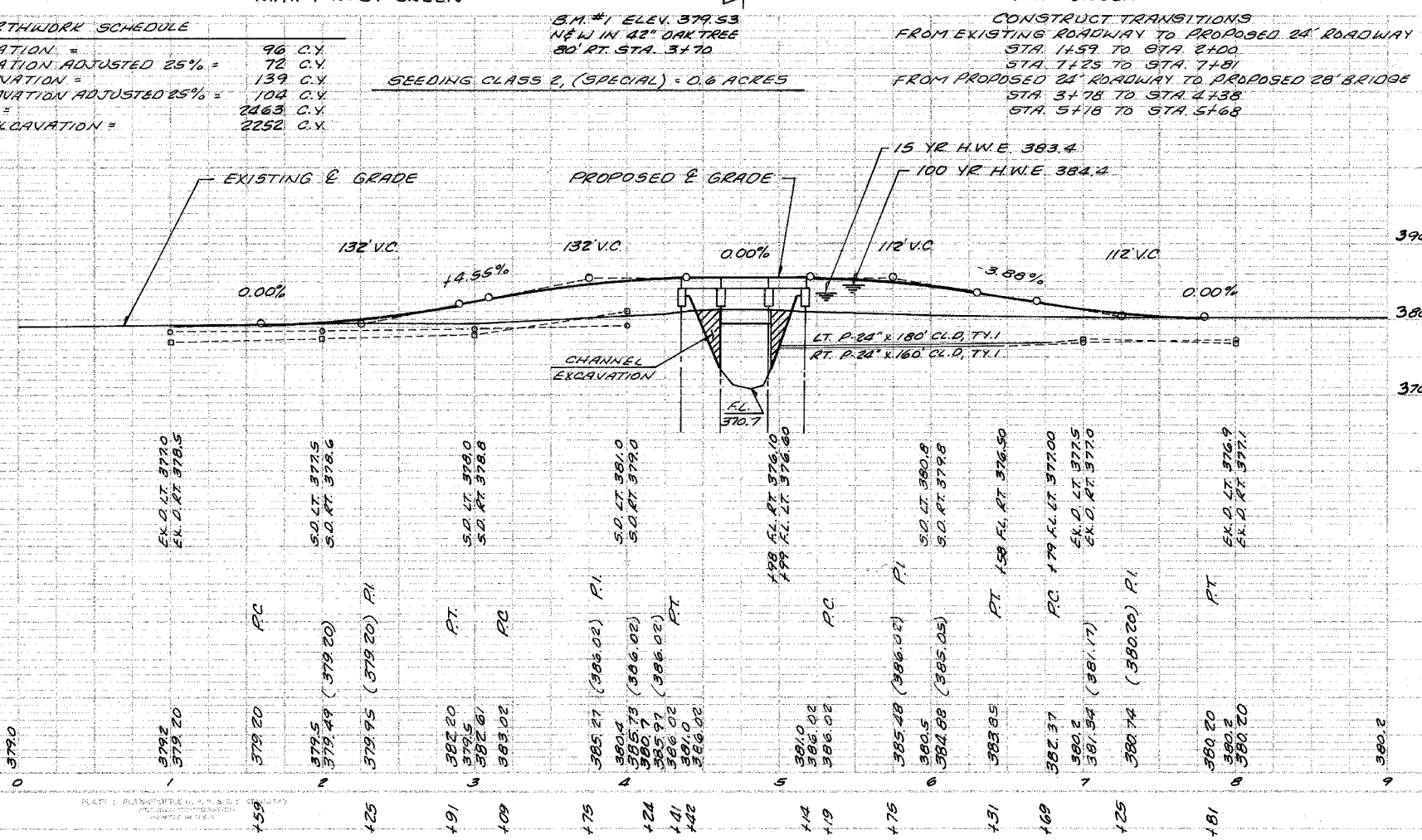
EARTH EXCAVATION =	96 C.Y.
EARTH EXCAVATION ADJUSTED 25% =	72 C.Y.
CHANNEL EXCAVATION =	139 C.Y.
CHANNEL EXCAVATION ADJUSTED 25% =	104 C.Y.
EMBANKMENT =	2463 C.Y.
FURNISHED EXCAVATION =	2252 C.Y.

- TEMPORARY DITCH CHECKS**
 LT. & RT. STA. 2+00 = 2 EACH
 LT. & RT. STA. 5+25 = 2 EACH
 LT. & RT. STA. 7+00 = 2 EACH
 TOTAL = 6 EACH

- PERIMETER EROSION BARRIER**
 LT. & RT. STA. 4+55 = 30 FEET
 LT. & RT. STA. 5+00 = 30 FEET
 TOTAL = 60 FEET

- STONE RIPRAP DITCH**
 RT. STA. 5+0 - 5+30 = 10 TON
 LT. STA. 5+0 - 5+30 = 10 TON
 TOTAL = 20 TON

UTILITIES
NONE



379.0

EX. O.L.T. 379.5
EX. O.R.T. 378.5

S.O.L.T. 377.5
S.O.R.T. 378.6

S.O.L.T. 378.0
S.O.R.T. 378.8

S.O.L.T. 381.0
S.O.R.T. 379.0

198 FL RT. 376.10
199 FL LT. 376.80

S.O.L.T. 380.8
S.O.R.T. 379.8

158 FL RT. 376.50

FC +79 FL LT. 377.00

EX. O.L.T. 377.5
EX. O.R.T. 377.0

EX. O.L.T. 376.9
EX. O.R.T. 377.1

380.0