

STATE OF ILLINOIS
DEPARTMENT OF TRANSPORTATION
DIVISION OF HIGHWAYS
PLANS FOR PROPOSED
FEDERAL-AID B.R.R. PROGRAM
JASPER COUNTY
SECTION 05-00100-00-BR
STRUCTURE NO. 040-3250
PROJECT NO. BROS-079(129)
JOB NO. C-97-095-05
CH 14

INDEX OF SHEETS

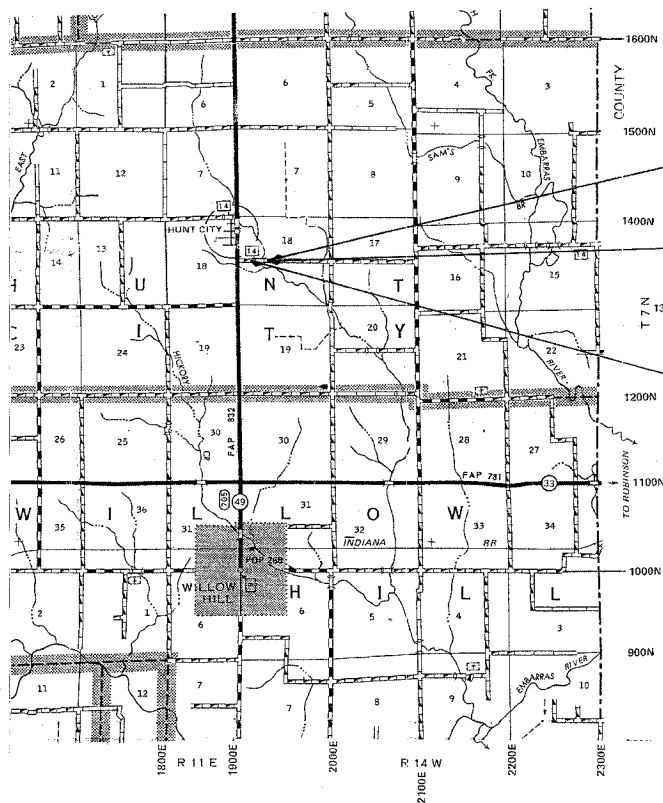
- 1 COVER SHEET
- 2 PLAN & PROFILE
- 3 CROSS SECTIONS
- 4-11 BRIDGE PLANS

STANDARDS: 280001-02 - EROSION CONTROL
(SEE PROPOSAL) 702001-05 - TRAFFIC
BLR 21-6 - TRAFFIC
BLR 22-4 - TRAFFIC

QUANTITY	UNIT	ITEM	CODE NO.
202	CU YD	EARTH EXCAVATION	20200100
100	CU YD	CHANNEL EXCAVATION	20300100
327	CU YD	FURNISHED EXCAVATION	20400800
0.6	ACRE	SEEDING, CLASS 2 (SPECIAL)	25001000
8	EACH	TEMPORARY DITCH CHECKS	28000300
48	FOOT	PERIMETER EROSION BARRIER	28000400
108	TON	STONE DUMPED RIPRAP, CLASS A4	28100807
22	TON	STONE RIPRAP DITCH	28102600
1	EACH	REMOVAL OF EXISTING STRUCTURES	50100100
19.8	CU YD	CONCRETE STRUCTURES	50300225
1400	SQ FT	PRECAST PRESTRESSED CONCRETE DECK BEAMS (21" DEPTH)	50400405
1940	POUND	REINFORCEMENT BARS	50800105
100	FOOT	STEEL RAILING, TYPE S1	50900205
252	FOOT	FURNISHING STEEL PILES HP 10X42	51201400
252	FOOT	DRIVING STEEL PILES	51202700
1	EACH	TEST PILE STEEL HP 10X42	51203400
2.6	CU YD	CONCRETE ENCASEMENT	51204315
1	EACH	NAME PLATES	51500100
66	FOOT	PIPE CULVERTS, CLASS D, TYPE 1 15"	542D0220
1	L SUM	MOBILIZATION	67100100
1	L SUM	TRAFFIC CONTROL AND PROTECTION	70101700

SCALES

- PLAN 1 INCH = 50 FEET
- PROFILE HORZ. 1 INCH = 50 FEET
- PROFILE VERT. 1 INCH = 10 FEET
- CROSS SECTIONS 1 INCH = 5 FEET



SECTION 05-00100-00-BR
ENDS STA. 8+00

STA. 3+65-STANDARD BRIDGE DESIGN
PROPOSED PRECAST PRESTRESSED CONC.
DECK BEAM BRIDGE, 1 SPAN @ 50'
28' RDWY.
PROPOSED STR. NO. 040-3250
EXISTING STR. NO. 040-3036

SECTION 05-00100-00-BR
BEGINS STA. 2+00

FUNCTIONAL CLASS: RURAL MINOR COLLECTOR
ADT = 100

CONTRACT NO. 95440

TOLL FREE JOINT UTILITY LOCATING
INFORMATION FOR EXCAVATORS (J.U.L.I.E.)
TELEPHONE NO. 1-800-892-0123

LOCATION MAP

APPROXIMATE SCALE: 1 INCH = 1 MILE
NET LENGTH = 600 FT. = 0.114 MILES

PROFESSIONAL DESIGN FIRM #184-000832

Michael R. ...
ILLINOIS REGISTERED PROFESSIONAL ENGINEER # 31350
LICENSE EXPIRES NOVEMBER 30, 2005

APPROVED *6-21-05*, 2005

Richard A. ...
COUNTY ENGINEER

PASSED *12/23*, 2005

Moussa El Kastl
DISTRICT SEVEN ENGINEER
OF LOCAL ROADS & STREETS
RELEASING FOR BID BASED
ON LIMITED REVIEW

12-23, 2005

Christina M. ...
DEPUTY DIRECTOR OF HIGHWAYS
REGION FOUR ENGINEER

STATE OF ILLINOIS
DEPARTMENT OF TRANSPORTATION