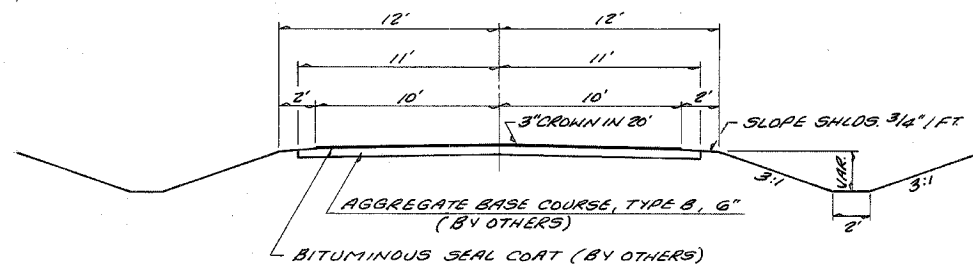
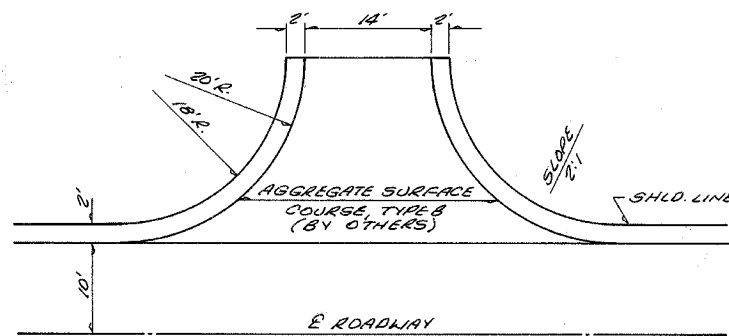
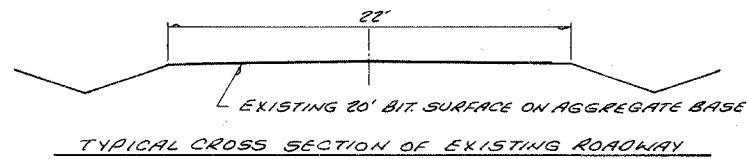


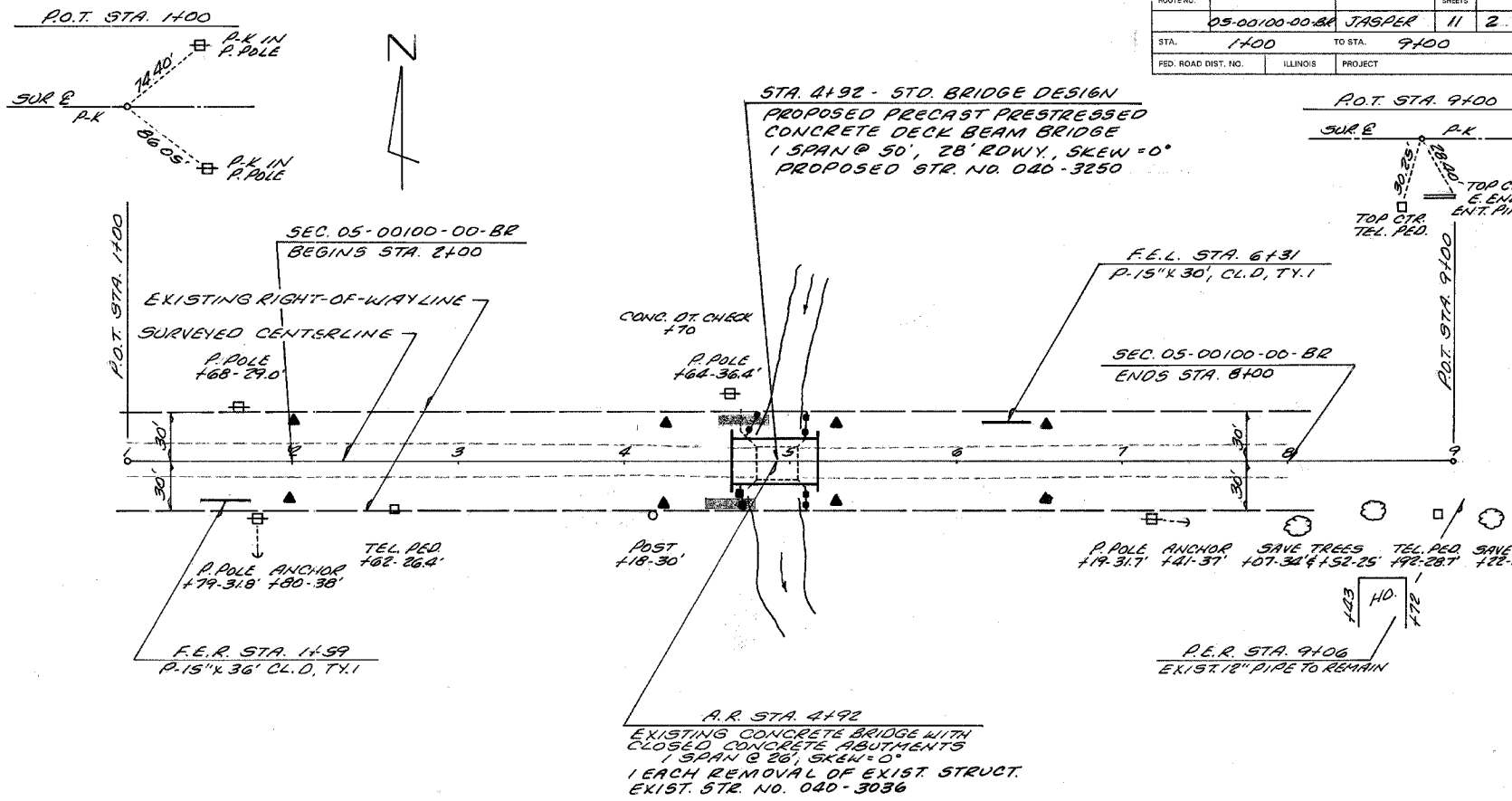
F.A.R. ROUTE NO.	SECTION	COUNTY	TOTAL SHEETS	SHEET
05-00100-00-BR	JASPER	11	2	
STA. 1400	TO STA. 9100			
FED. ROAD DIST. NO.	ILLINOIS	PROJECT		



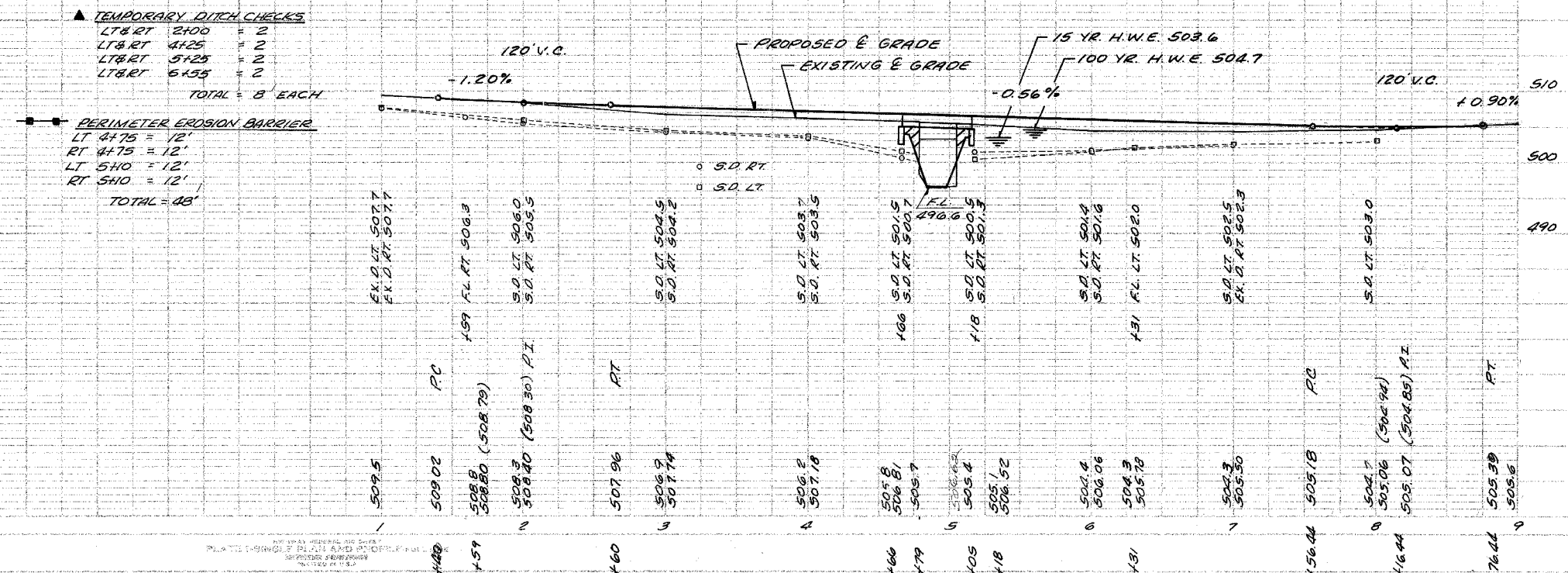
TYPICAL CROSS SECTION OF PROPOSED IMPROVEMENT



DETAIL OF FIELD ENTRANCES



EARTHWORK SCHEDULE		CONSTRUCT TRANSITIONS		STONE RIPRAP DITCH CL. 2	
EARTH EXCAVATION =	202 CU. YD.	FROM EXIST. ROWY. TO PROP. 22' ROWY.	STA. 1450 TO STA. 2400	LT. STA. 4155 TO STA. 4185 = 11 TON	
EARTH EXCAVATION ADJUSTED 25% =	152 CU. YD.	STA. 8400 TO STA. 8476		RT. STA. 4150 TO STA. 4180 = 11 TON	
CHANNEL EXCAVATION =	100 CU. YD.	FROM PROP. 22' ROWY. TO PROP. 28' ROWY.	STA. 4117 TO STA. 4167	TOTAL = 22 TON	
CHANNEL EXCAVATION ADJUSTED 25% =	75 CU. YD.	QUANTITIES INCLUDED IN THOSE LISTED	STA. 5417 TO STA. 5467		
EMBANKMENT =	554 CU. YD.			SEEDING CL. 2 SPECIAL	
FURNISHED EXCAVATION =	327 CU. YD.			STA. 1450 TO 8476 = 0.5 ACRES	



- ▲ TEMPORARY DITCH CHECKS
 LT & RT 2400 = 2
 LT & RT 4125 = 2
 LT & RT 5425 = 2
 LT & RT 6455 = 2
 TOTAL = 8 EACH
- PERIMETER EROSION BARRIER
 LT 4175 = 12'
 RT 4175 = 12'
 LT 5470 = 12'
 RT 5470 = 12'
 TOTAL = 48'

UTILITIES

TELEPHONE: VERIZON
 225 E. CHESTNUT
 OLNEY, IL 62450
 618-395-6189

ELECTRIC: NORRIS ELECTRIC CO-OP
 8543 NORTH STATE HIGHWAY 130
 NEWTON, IL 62448
 618-783-8765