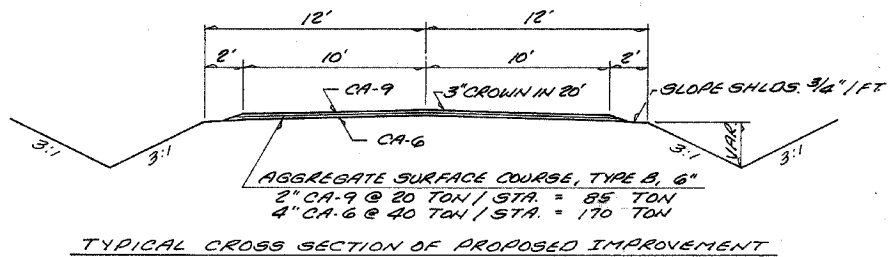
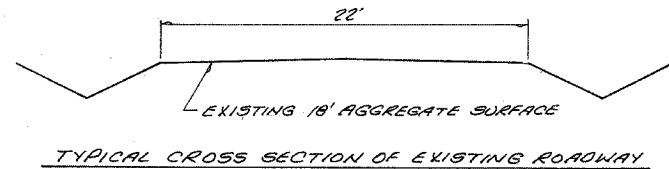


EMMETT X BUNYAN
PARCEL NO. 1

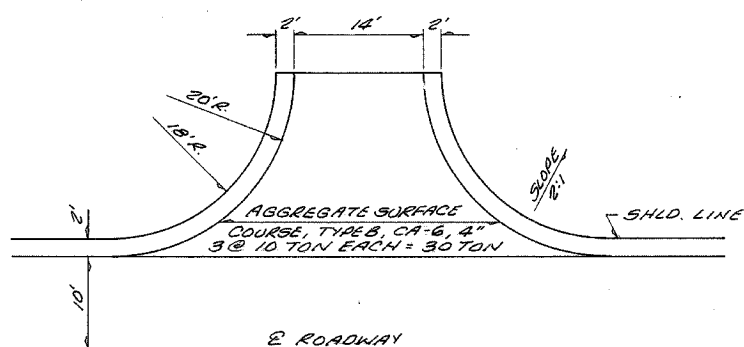
F.A.S. ROUTE NO.	SECTION	COUNTY	TOTAL SHEETS	SHEET
05-08132-00-BR	LAWRENCE	IL	10	2
STA. 0+00	TO STA. 8+00			
FED. ROAD DIST. NO.	ILLINOIS	PROJECT		



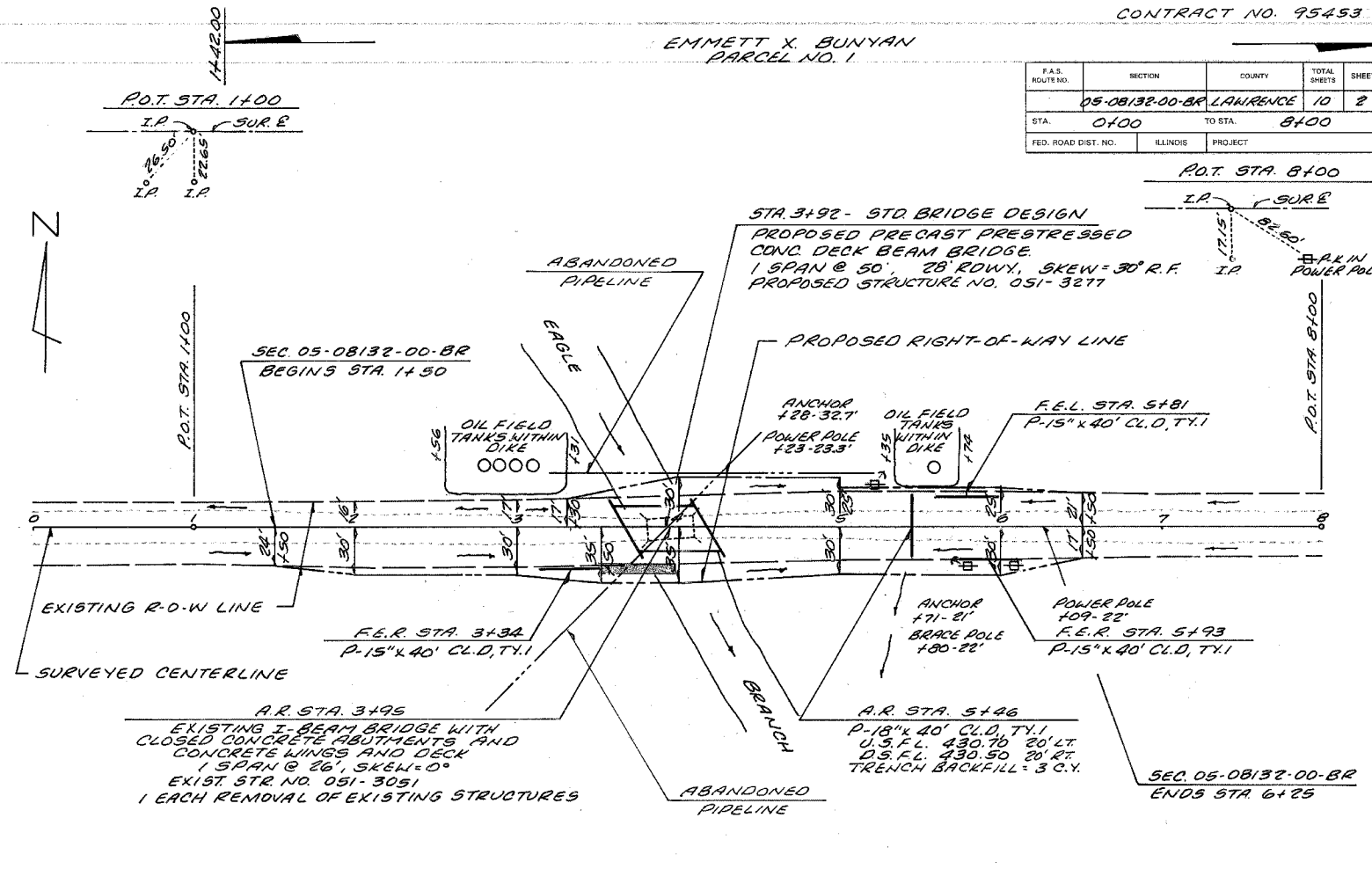
TYPICAL CROSS SECTION OF PROPOSED IMPROVEMENT



TYPICAL CROSS SECTION OF EXISTING ROADWAY



DETAIL OF PROPOSED FIELD ENTRANCES



EARTHWORK SCHEDULE

EARTH EXCAVATION	117 CU. YD.
EARTH EXCAVATION ADJUSTED 25%	88 CU. YD.
CHANNEL EXCAVATION	76 CU. YD.
CHANNEL EXCAVATION ADJUSTED 25%	57 CU. YD.
EMBANKMENT	228 CU. YD.
FURNISHED EXCAVATION	83 CU. YD.

SEEDING CLASS 2 (SPECIAL)
LT. & RT. STA. 1+50 TO 6+25 = 0.35 ACRES

PERIMETER EROSION BARRIER
20' @ EACH COR. BRIDGE ON TOE OF CHANNEL SLOPE = 80 FT.

TEMPORARY DITCH CHECKS

LT. STA. 1+50 =	1 EACH
RT. STA. 3+10 =	1 "
LT. & RT. STA. 5+40 =	2 "
RT. STA. 5+50 =	1 "
LT. STA. 6+05 =	1 "
TOTAL =	6 EACH

CONSTRUCT TRANSITION
FROM EXIST. ROWY. TO PROP. 28' ROWY.
STA. 1+50 TO STA. 2+0
STA. 5+75 TO STA. 6+25
FROM PROP. 28' ROWY. TO PROP. 28' BRIDGE
STA. 3+09 TO STA. 3+59
STA. 4+25 TO STA. 4+75
QUANTITIES INCLUDED IN THOSE LISTED

B.M. #1 ELEV. 434.57
P-K IN POWER POLE
1.60' LT. STA. 3+40

B.M. #2 ELEV. 433.14
P-K IN POWER POLE
22' RT. STA. 6+09

TREE REMOVAL (6-15 UNITS DIA.) = 89 UNITS DIA.

STONE RIPRAP DITCH
RT. STA. 3+54 TO STA. 3+98 = 13 TON
LT. & RT. STA. 5+46 = 8 TON
TOTAL = 21 TON

UTILITIES:
PIPELINE & ELECTRIC: NATIONAL ENERGY
R.R.A.
LAWRENCEVILLE, IL.
PH. 618-943-5314
CELL 812-291-0379

