

ROUTE	SECTION	COUNTY	TOTAL SHEETS	SHEET NO.
F.A.S. 801	03-00110-00-BR	RICHLAND	13	1
CONTRACT NO. 95456		ILLINOIS	PROJECT BRS-801(228)	

Joint Utility Locating Information for Excavators
 JULIE 1-800-892-0123

STATE OF ILLINOIS
 DEPARTMENT OF TRANSPORTATION
 DIVISION OF HIGHWAYS
 PLANS FOR PROPOSED
 BRIDGE REPLACEMENT & REHABILITATION PROGRAM

SECTION 03-00110-00-BR RICHLAND COUNTY

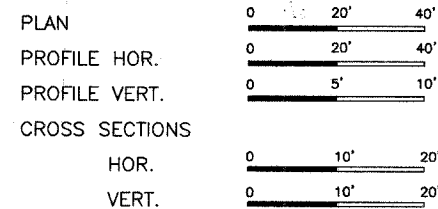
PROJECT BRS-801(228)

JOB NO. C-97-045-06

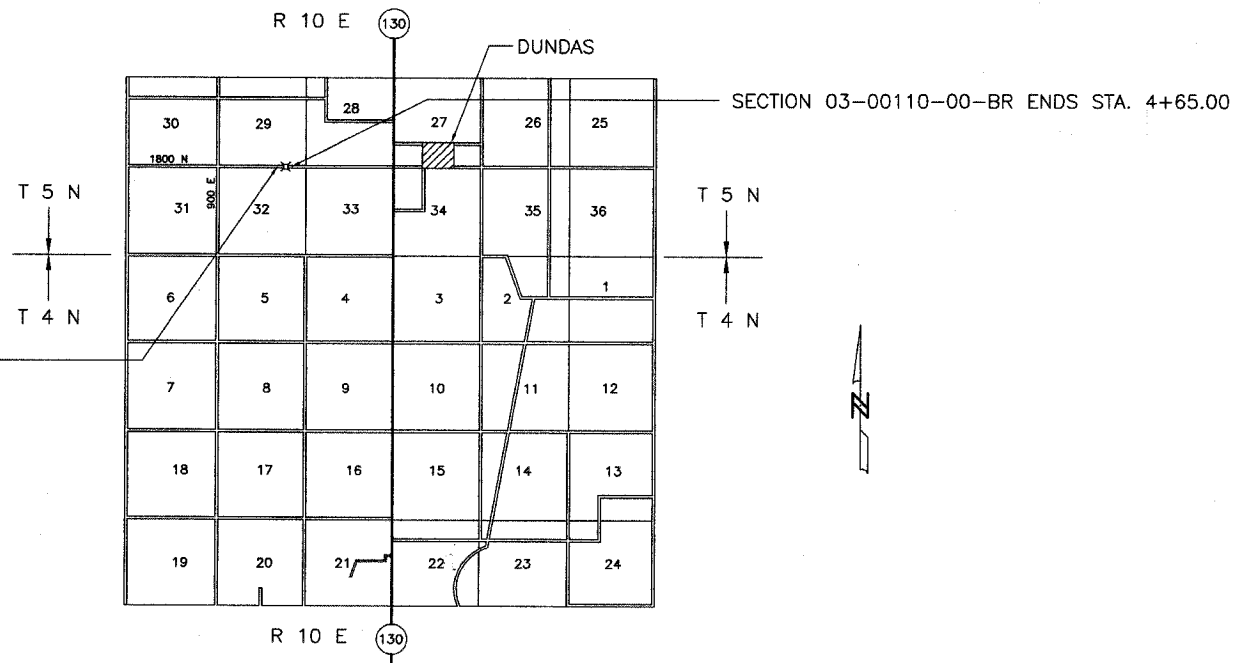
F.A.S. 801

INDEX OF SHEETS

SHEET	ITEM
1	COVER SHEET
2	SUMMARY OF QUANTITIES
3	ROADWAY PLAN AND PROFILE
4	GENERAL PLAN AND ELEVATION
5	STANDARD CS-2827-60
6	STANDARD CB-2827-48
7	STANDARD CA-2827-10
8	STANDARD CP-2827-10
9	STANDARD CR-TS1
10	STANDARD CN
11	STANDARD CX-1
12-13	CROSS SECTIONS



- STANDARD DRAWINGS
- STANDARD 000001-04
 - STANDARD 280001-02
 - STANDARD 630001-05
 - STANDARD 631026-02
 - STANDARD 702001-05
 - STANDARD BLR 21-6
 - STANDARD BLR 22-4
 - STANDARD BLR 23-1



SECTION 03-00110-00-BR BEGINS STA. 1+35.00

THREE SPAN PRECAST PRESTRESSED CONCRETE DECK BEAM BRIDGE
 181'-6" BK.-BK. ABUTMENTS
 STEEL PILE SPILLTHROUGH ABUTMENTS
 STEEL PILE PIERS
 28' DECK
 EXISTING STRUCTURE NO. 080-3007
 PROPOSED STRUCTURE NO. 080-3210

CONTRACT NO. 95456

RURAL MAJOR COLLECTOR
 ADT = 750
 DESIGN SPEED = 50 M.P.H.

NET LENGTH SECTION 03-00110-00-BR = 330.00 Ft. = 0.062 Mi.

Roger A. Charleston
 Ill. Reg. Prof. Eng. #29195
 12/8/05
 Lic. Expires 11/30/06

CHARLESTON ENGINEERING INC.
 105 N. KITCHELL
 P.O. BOX 397
 OLNEY, ILLINOIS 62450
 PH. 618-392-0736



APPROVED December 14 2005
Danny A. Colwell
 COUNTY ENGINEER

PASSED Jan 4 2006
Maurice L. Casel
 DISTRICT SEVEN ENGINEER OF
 LOCAL ROADS AND STREETS

Releasing For
 Bid Based on
 Limited Review Jan 4 2006
Christina M. Reed
 DEPUTY DIRECTOR OF HIGHWAYS
 REGION FOUR ENGINEER

STATE OF ILLINOIS
 DEPARTMENT OF TRANSPORTATION