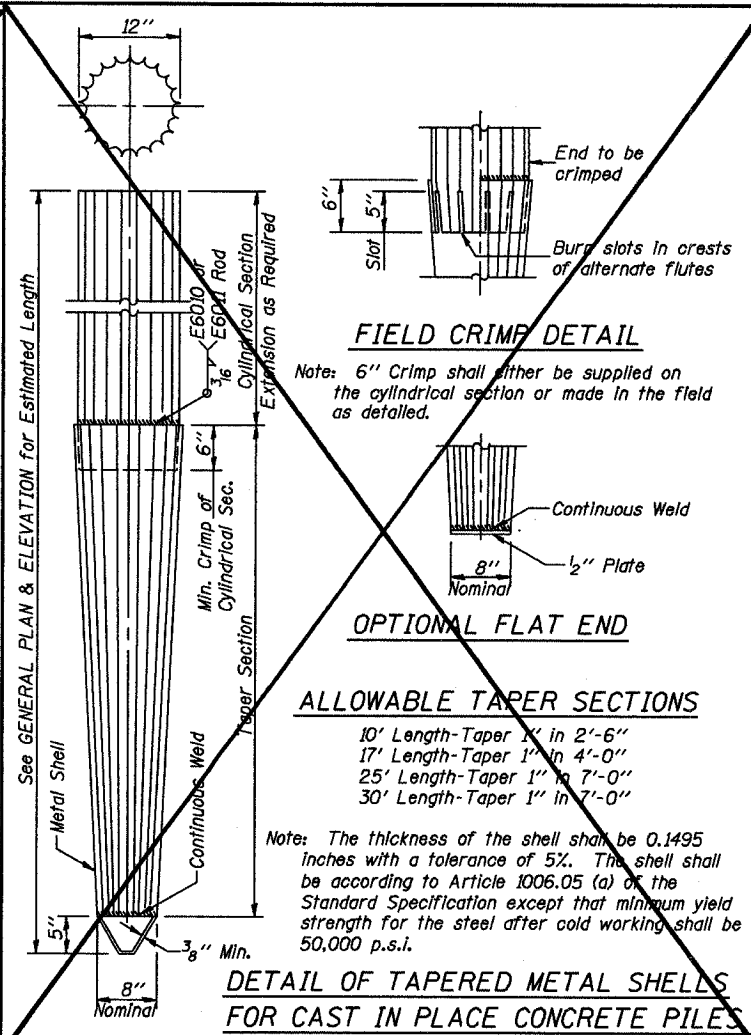
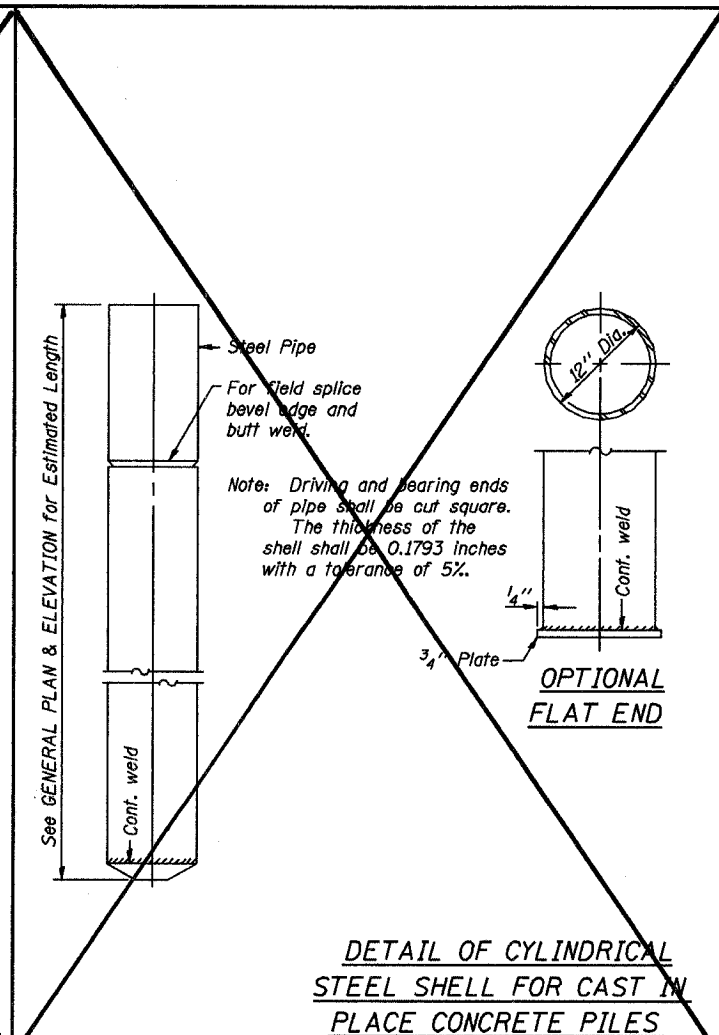


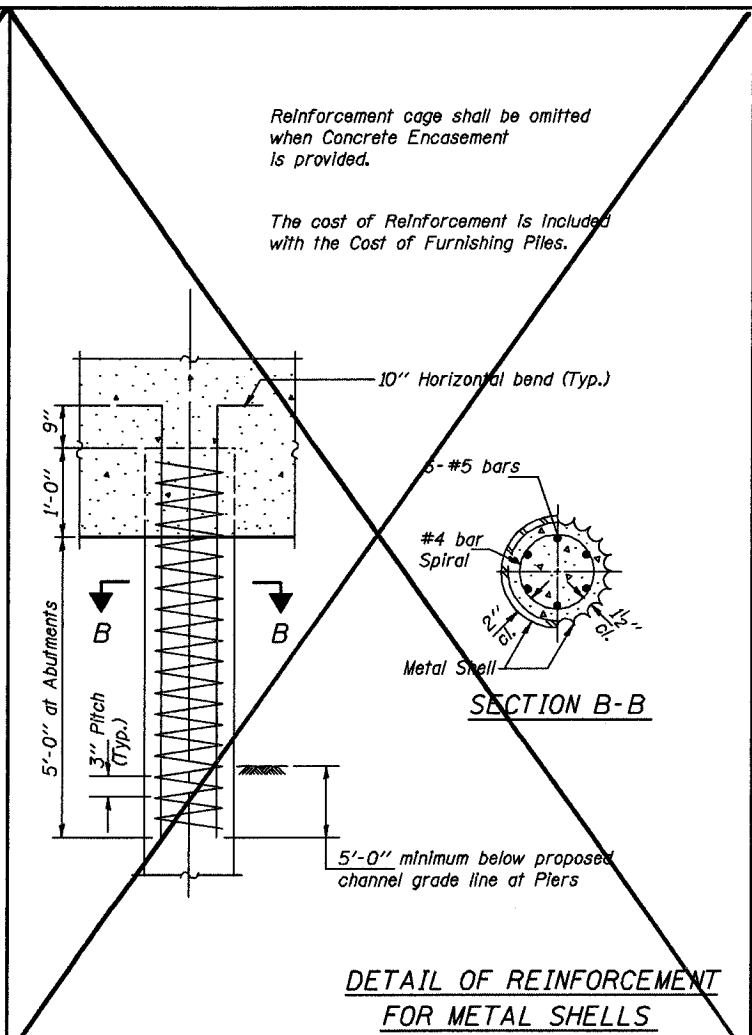
**DETAIL OF PRECAST CONCRETE PILES**



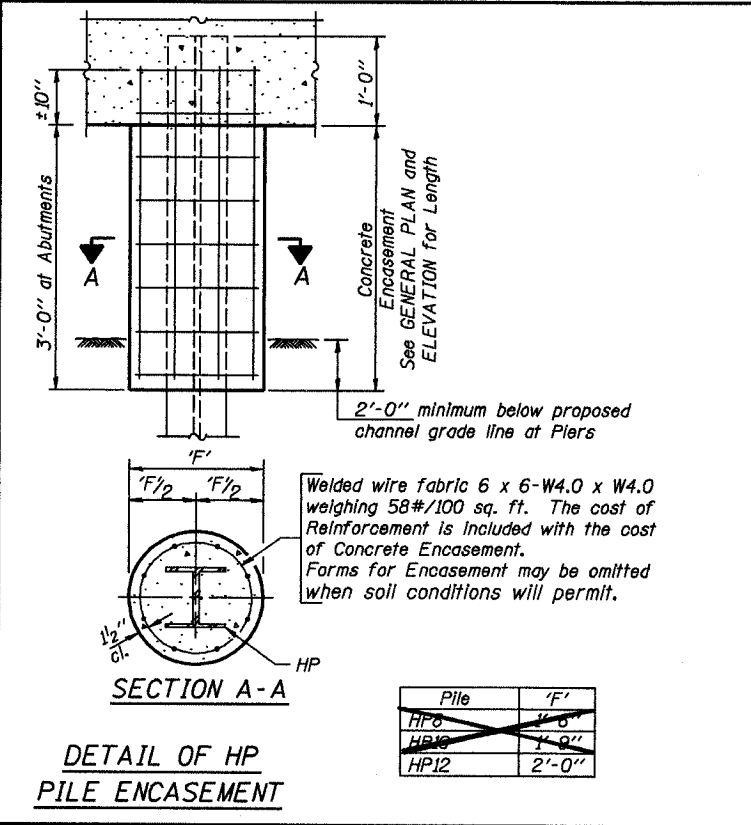
**DETAIL OF TAPERED METAL SHELLS FOR CAST IN PLACE CONCRETE PILES**



**DETAIL OF CYLINDRICAL STEEL SHELL FOR CAST IN PLACE CONCRETE PILES**

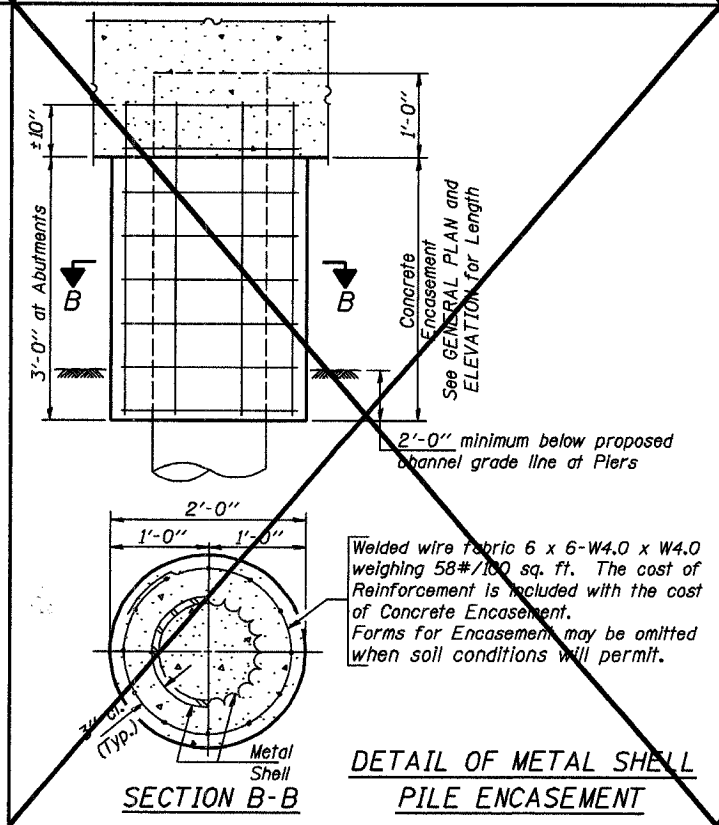


**DETAIL OF REINFORCEMENT FOR METAL SHELLS**



**DETAIL OF HP PILE ENCASEMENT**

Pile	'F'
HP8	4'-0"
HP10	4'-9"
HP12	2'-0"



**DETAIL OF METAL SHELL PILE ENCASEMENT**

**QUANTITIES/FT. OF ENCASEMENT (STEEL PILES)**

Pile Size	Item	Quantity
HP8	Concrete Encasement	0.063 C.Y.
HP10	Concrete Encasement	0.086 C.Y.
HP12	Concrete Encasement	0.112 C.Y.

**(METAL SHELL PILES)**

Pile Size	Item	Quantity
12" Dia.	Concrete Encasement	0.087 C.Y.

PILE DETAILS
STANDARD CX-1

Illinois Department of Transportation

PASSED FEBRUARY 1, 2000

Thomas J. Demasak (Engineer of Bridge Design)

APPROVED FEBRUARY 1, 2000

Ralph E. Anderson (Engineer of Bridges and Structures)