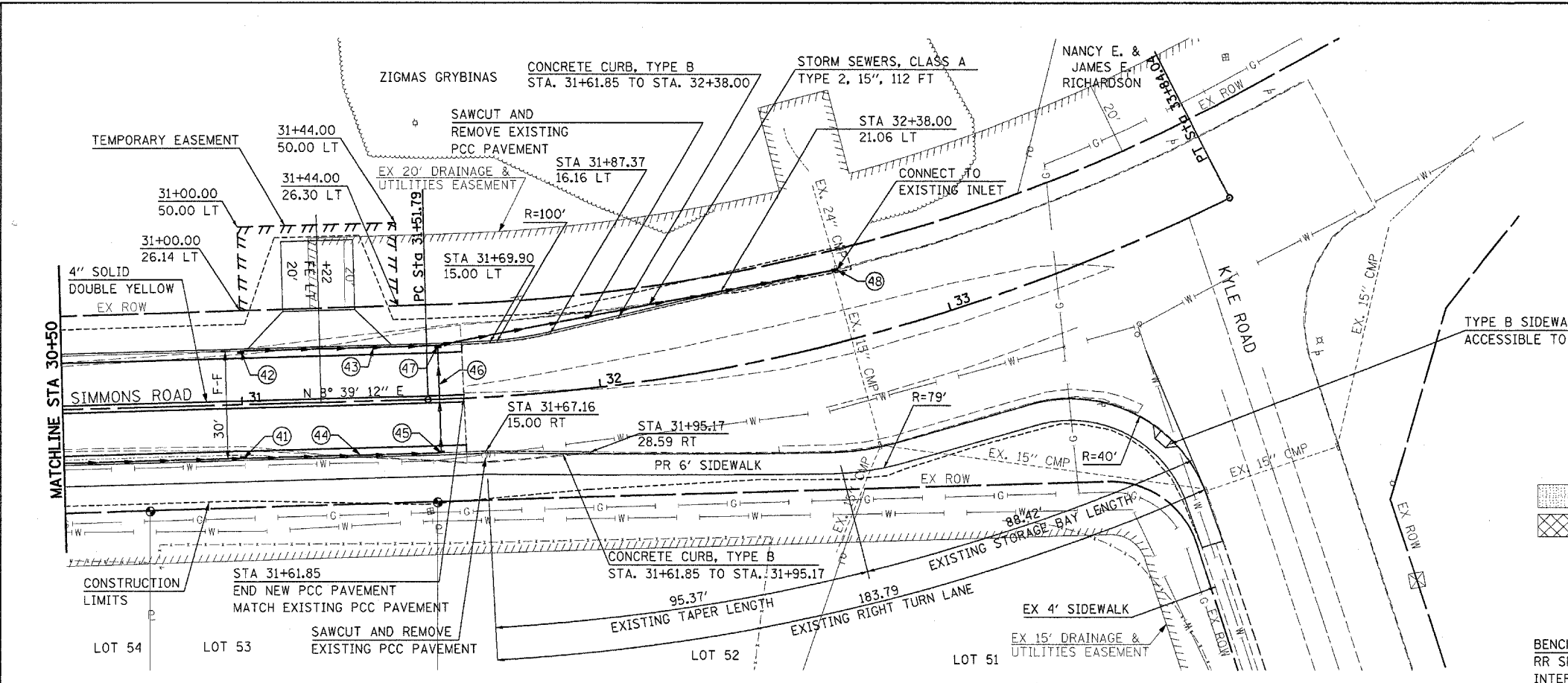
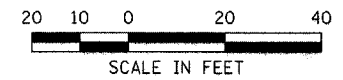


PROP. CURVE 34
 PI STA. = 32+69.87
 Δ = 25° 30' 30" (LT)
 D = 10° 58' 59"
 R = 521.67'
 T = 118.08'
 L = 232.25'
 E = 13.20'
 e = NC
 P.C. STA = 31+51.79
 P.T. STA = 33+84.04



BITUMINOUS PAVEMENT
 PAVEMENT REMOVAL

BENCHMARK INFORMATION:
 RR SPIKE IN POWER POLE NEAR THE
 INTERSECTION OF SIMMONS ROAD & KYLE ROAD
 BM ELEV = 562.90



585	(41) STA 31+00.00, 15.00' RT INLETS, TYPE B TYPE 3V FRAME & GRATE GR ELEV: 564.17 FL ELEV: 561.52	(42) STA 31+00.00, 15.00' LT INLETS, TYPE B TYPE 3V FRAME & GRATE GR ELEV: 564.17 FL ELEV: 558.50	(43) STORM SEWERS, CLASS A TYPE 2, 15", 52 FT	(44) STORM SEWER (WATER MAIN REQUIREMENTS) 15" 52 FT	(45) STA 31+55.00, 15.00' RT INLETS, TYPE B TYPE 3V FRAME & GRATE GR ELEV: 563.31 FL ELEV: 559.00	(46) STORM SEWERS, CLASS A TYPE 2, 15", 28 FT	(47) STA 31+55.00, 15.00' LT INLETS, TYPE B TYPE 3V FRAME & GRATE GR ELEV: 563.31 FL ELEV: 557.75	(48) STA 32+72.28, 19.90' LT EX INLET GR ELEV: 562.40 FL ELEV: 549.44	585
580									580
575									575
570									570
565									565
560									560
555									555
550									550
545									545

Plot Date: 9/27/2005
 Plot Time: 7:22:29 AM
 Printed By: sdonohue
 File Name: I:\03\05\Road\Construction\Plans\p05.dgn