

INCIDENTAL BITUMINOUS SURFACE, SUPERPAVE				
LOCATION	STREET NAME	SIDE	AREA SQ. YD.	TONS
103+00.00	3RD ST.	RT.	191	16
103+00.00	3RD ST.	LT.	164	14
105+98.99	4TH ST.	RT.	183	15
105+98.99	4TH ST.	LT.	177	15
108+98.26	5TH ST.	RT.	88	7
108+98.26	5TH ST.	LT.	162	14
111+99.90	6TH ST.	RT.	229	19
111+99.90	6TH ST.	LT.	164	14
115+00.14	7TH ST.	RT.	133	11
115+00.14	7TH ST.	LT.	100	8
117+99.29	8TH ST.	LT.	166	14
7+99.30	WASHINGTON ST.	RT.	62	7
7+99.30	WASHINGTON ST.	LT.	54	6
11+00.00	JEFFERSON ST.	RT.	52	6
11+00.00	JEFFERSON ST.	LT.	60	7
14+02.01	MADISON ST.	RT.	55	6
14+02.01	MADISON ST.	LT.	54	6
16+42.67	C.E.	LT.	38	4
17+82.26	C.E.	LT.	38	4
TOTAL				193

PORTLAND CEMENT CONCRETE SIDEWALK 4 INCH			SIDEWALK REMOVAL
LOCATION	AREA	AREA	
LT 13+82.35	97	97	
LT 14+21.22	105	105	
RT 20+39.26	82	82	
TOTALS		284 SQ FT	284 SQ FT

CLASS B PATCHES, 10 INCH						
NO.	LOCATION	LENGTH (FOOT)	WIDTH (FOOT)	TYPE I (SQ YD)	TYPE II (SQ YD)	TYPE III (SQ YD)
1.	105+98.99	RT.	3	10	3.5	
2.	105+98.99	LT.	3	10	3.5	
3.	109+25.33	RT.	3	10	3.5	
4.	109+25.33	LT.	3	10	3.5	
5.	110+52.88	RT.	5	10		6.0
6.	110+52.88	LT.	5	10		6.0
7.	115+62.64	RT.	11	10		12.5
8.	13+77.94	RT.	3.5	15.5		6.5
9.	13+77.94	LT.	3.5	15.5		6.5
10.	16+80.00	LT.	3	15		5.0
11.	19+18.01	RT.	2.66	15	4.5	
12.	19+18.01	LT.	2.66	15	4.5	
TOTALS				23	42.5	15
ADDITIONAL 10%				2.3	4.25	1.5
ROUNDED PROJECT TOTALS				26.0	47.0	17

NOTE:
STATIONS LISTED IN THE SCHEDULES ARE APPROXIMATE LOCATIONS. LOCATIONS OF CURB REMOVAL, SIDEWALK REMOVAL AND PATCHES SHALL BE APPROVED BY THE ENGINEER PRIOR TO ANY REMOVAL OPERATIONS.

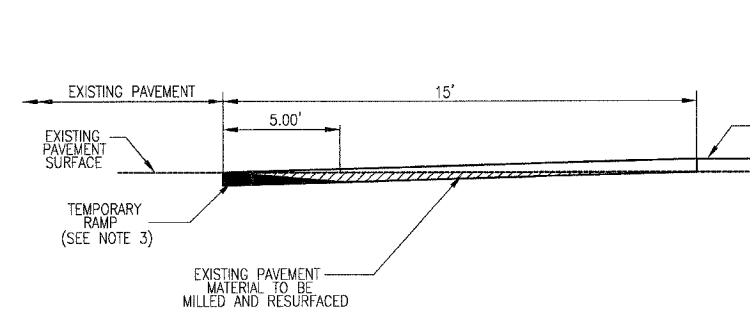
THERMOPLASTIC PAVEMENT MARKING - LINE										
STATION	STATION	SIDE	DESCRIPTION	4" (YELLOW)	4" (WHITE)	6" (WHITE) CROSSWALKS	12" (WHITE)	24" (WHITE) STOP BARS		
100+24.62	118+40.00		SKIP-DASH	454						
100+24.62	104+80.00		NO-PASSING	455						
100+24.62	102+59.50	BOTH	EDGE		470					
103+43.51	105+57.51	BOTH	EDGE		428					
106+41.72	108+60.79	BOTH	EDGE		438					
109+36.54	111+56.60	BOTH	EDGE		440					
112+44.64	114+61.70	BOTH	EDGE		434					
115+34.28	117+43.31	LT.	EDGE		209					
115+34.28	118+40.00	RT.	EDGE		306					
100+25.00		LT.	STOP						33	
114+74.15		RT.	STOP						11	
114+80.84		BOTH	CROSSWALKS				132			
115+17.69		BOTH	CROSSWALKS				133			
115+23.87		LT.	STOP						11	
5+20.00	25+55.53		SKIP DASH	509						
5+20.00		LT.	STOP				19			
5+44.32	7+48.26	LT.	PARKING		204					
8+49.82	10+59.96	LT.	PARKING		210					
11+52.13	13+56.13	LT.	PARKING		204					
13+74.50		RT.	STOP				11			
13+81.14		BOTH	CROSSWALKS			68				
14+06.16		RT.	CROSSWALKS			62				
14+06.16		LT.	CROSSWALKS			64				
14+23.24		BOTH	CROSSWALKS			65				
14+30.28		LT.	STOP				19			
14+47.98	16+02.56	LT.	PARKING		155					
16+80.96	17+42.88	LT.	PARKING		62					
18+22.64	20+39.23	LT.	PARKING		203					
20+25.51	21+55.77	LT.	TAPER				53			
21+55.77	25+55.53	LT.	EDGE		400					
20+25.51	25+55.53	RT.	EDGE		530					
TOTALS				1418	4693	259	367	55		

BITUMINOUS MATERIALS							
STATION	TO	STATION	BASELINE	BITUMINOUS CONC. SURFACE CSE, SUPERPAVE MIX "D" N70 TON	LEVELING BINDER (MACHINE METHOD) SUPERPAVE, N70 TON	BITUMINOUS MATERIALS (PRIME COAT) GAL	AGGREGATE (PRIME COAT) GAL
100+24.62		118+40.00	CANAL	386		508	10
5+20.00		10+84.22	6TH			161	3
5+20.00		25+55.77	6TH	555			
10+84.22		20+39.19	6TH		181	273	5
20+39.19		25+55.77	6TH			121	2
TOTALS				941	181	1063	20

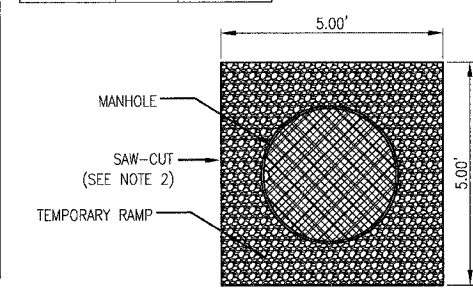
CONCRETE CURB, TYPE B			CURB REMOVAL
LOCATION	LENGTH	LENGTH	
RT 6+88.87	15	15	
LT 13+22.47	15	15	
LT 19+27.71	10	10	
LT 21+35.71	10	10	
PROJECT TOTALS		50 FOOT	50 FOOT

DETECTABLE WARNINGS	
LOCATION	AREA
LT 13+82.35	16
LT 14+21.22	16
TOTAL 32 SQ FT	

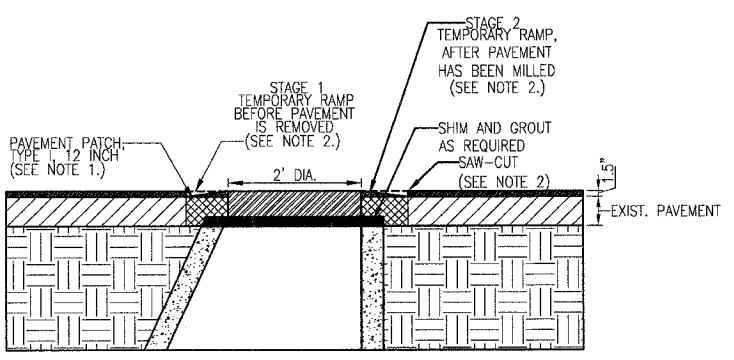
FRAMES AND LIDS TO BE ADJUSTED		
STATION	SIDE	EACH
6+51.48	LT.	1
9+52.78	RT.	1
12+52.10	LT.	1
TOTAL		3



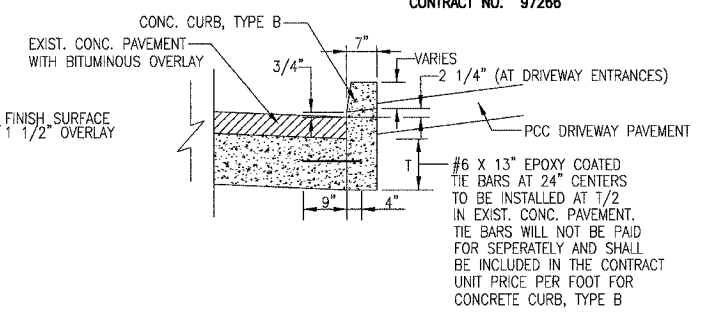
BITUMINOUS SURFACE REMOVAL BUTT-JOINT		
STATION	SIDE	SQ YD
10+99.21	RT.	52
11+00.94	LT.	60
14+00.91	RT.	55
14+02.04	LT.	54
TOTAL		221



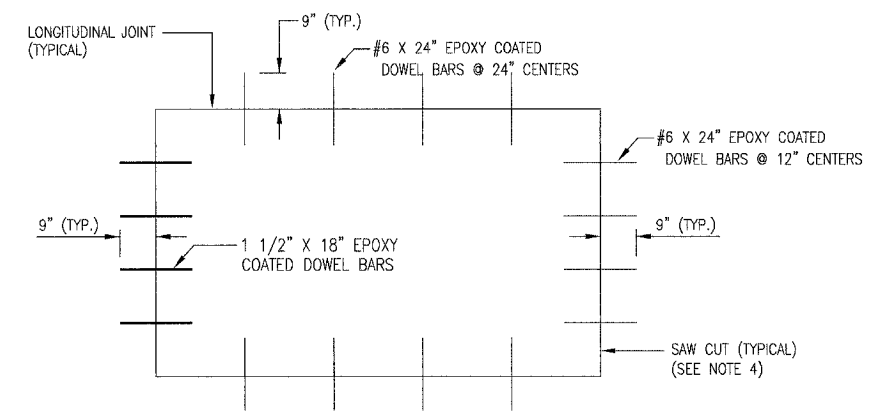
FRAME AND LID TO BE ADJUSTED DETAIL.



CROSS-SECTION OF PAVEMENT RESURFACING AROUND MANHOLES



CONCRETE CURB, TYPE B



TYPICAL PAVEMENT PATCH SEE STANDARD 442101 FOR ADDITIONAL INFORMATION

- NOTES:
1. THE COST OF PAVEMENT REMOVAL AND TYPE 1 PATCHES SHALL BE INCLUDED IN THE CONTRACT UNIT PRICE PER EACH FOR THE FRAMES AND GRATES TO BE ADJUSTED, AND FOR FRAMES AND LIDS TO BE ADJUSTED.
 2. SAW CUTS AND REMOVAL OF TEMPORARY RAMPS AFTER BOTH STAGES IS INCLUDED IN CONSTRUCTION COSTS.
 3. REMOVAL OF TEMPORARY RAMPS SHALL BE INCLUDED IN THE CONTRACT UNIT PRICE PER SQUARE YARD FOR BITUMINOUS SURFACE REMOVAL 1-1/2".
 4. THE CONTRACTOR SHALL USE A CARBIDE TIPPED WHEEL SAW TO MAKE A MINIMUM OF ONE FULL DEPTH LONGITUDINAL AND ONE TRANSVERSE SAW CUT FOR EACH PATCH. THE SAW CUTS SHALL BE TEMPORARILY FILLED WITH A BITUMINOUS MIXTURE IF THE PATCHING IS NOT COMPLETED AT THE TIME OF SAWING. THE COST OF SAW CUTS AND DOWEL BARS WILL NOT BE PAID FOR SEPARATELY AND SHALL BE INCLUDED IN THE CONTRACT UNIT PRICE PER SQUARE YARD FOR EACH PATCH.

REVISIONS	
NAME	DATE

ILLINOIS DEPARTMENT OF TRANSPORTATION
SCHEDULES & DETAILS
F.A.U. 9141 (CANAL STREET)
F.A.U. 9142 (6TH STREET)
SECTION 05-00022-00-RS
ST. CLAIR & MADISON COUNTY

SCALE: DATE: **DECEMBER 5, 2005** DRAWN BY: **JEH** CHECKED BY: **RCY**