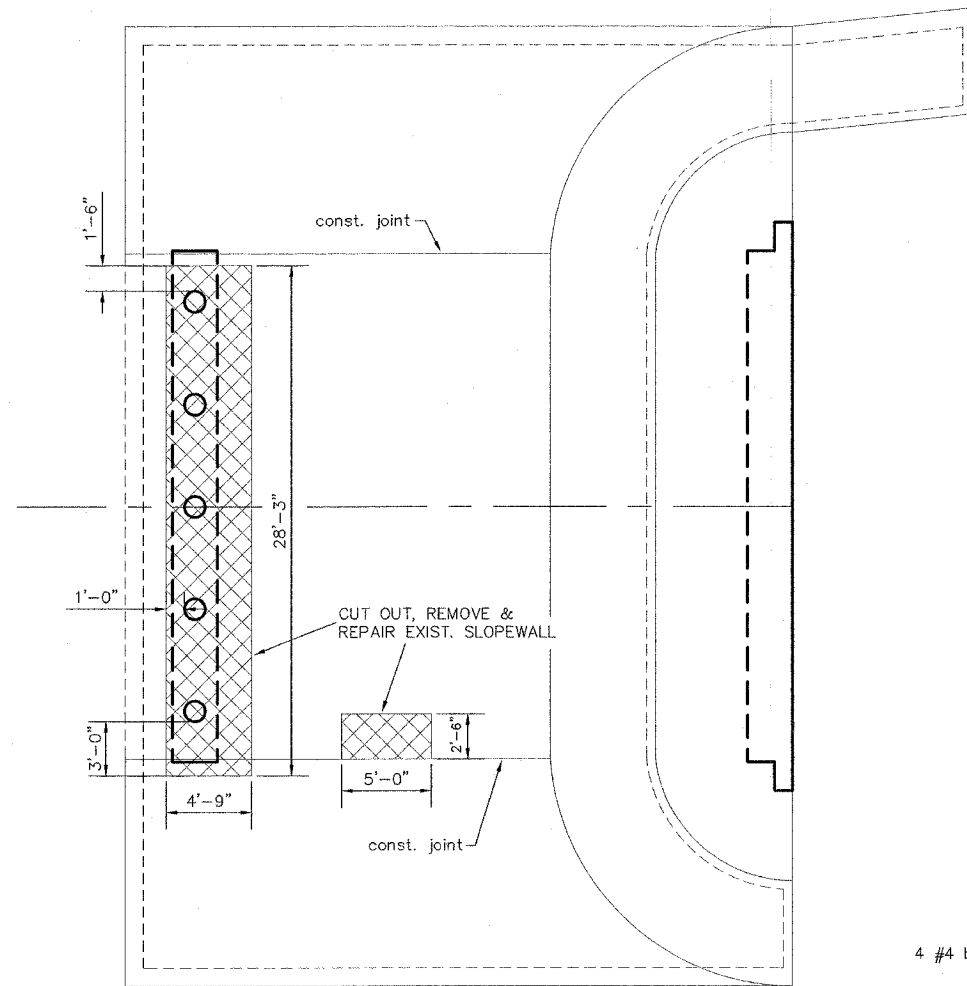
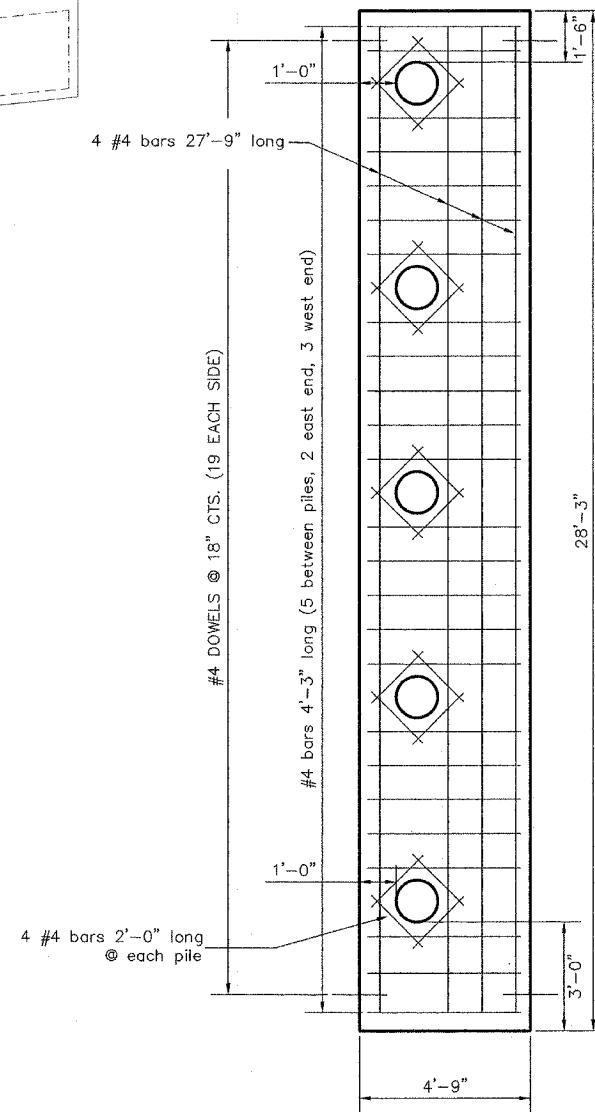


| ROUTE NO. | SECTION | COUNTY | TOTAL SHEETS | SHEET NO. |
|---------------------|----------------|---------|--------------|-----------|
| C.H. 5 (SHATTUC RD) | 02-00079-00-BR | CLINTON | 15 | 11 |

CONTRACT NO. 97267



PLAN

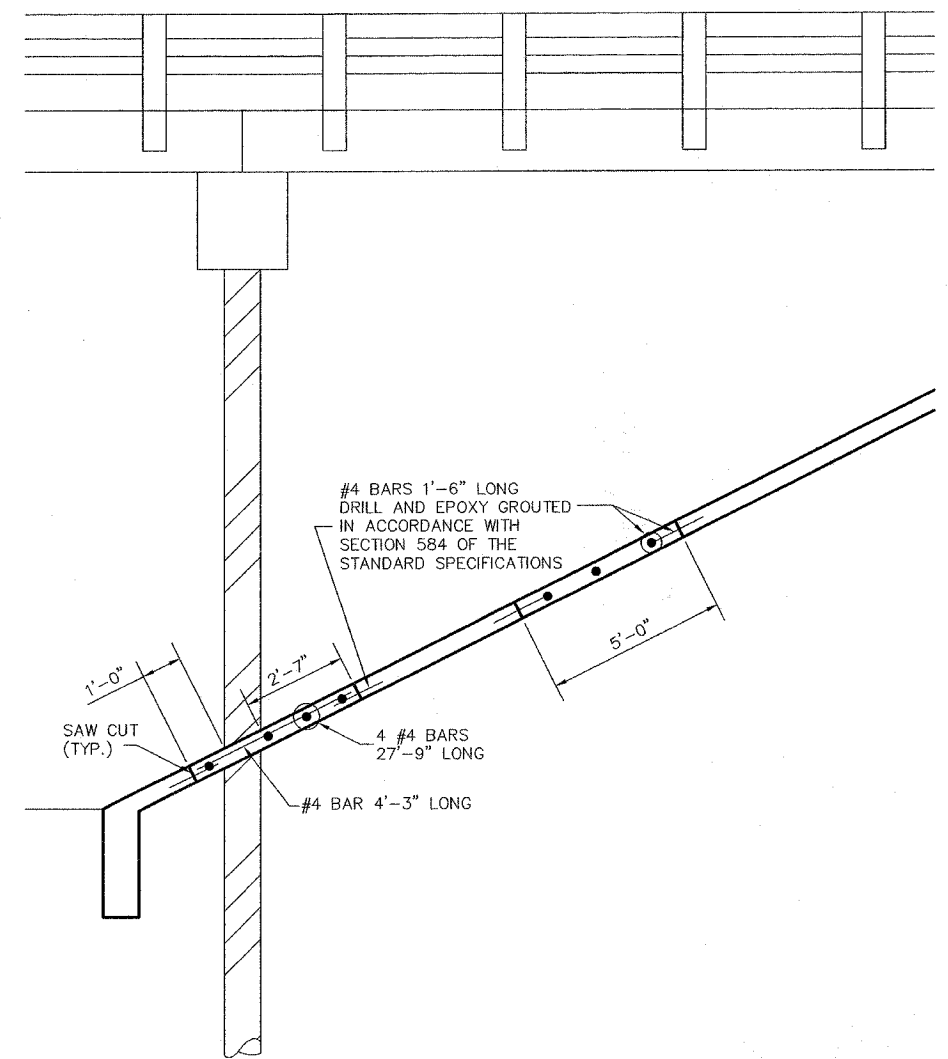
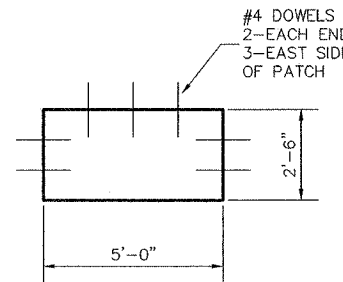


REINFORCEMENT BAR DETAIL

BAR LIST

| SIZE | NO. | LENGTH |
|------|-----|--------|
| #4 | 4 | 27'-9" |
| #4 | 20 | 2'-0" |
| #4 | 25 | 4'-3" |
| #4 | 45 | 1'-6" |

NOTE: All reinforcement bars shall be epoxy coated



ELEVATION

BILL OF MATERIAL

| | |
|----------------------------|-------------|
| CONCRETE SLOPEWALL REMOVAL | 147 SQ. FT. |
| CONCRETE SLOPEWALL | 147 SQ. FT. |

NOTE: ALL CONCRETE, REINFORCING, DRILLING, GROUTING OF BARS, ETC. SHALL BE INCLUDED IN THE UNIT COST PER SQ. FT. FOR CONCRETE SLOPEWALL.

SOUTH SLOPEWALL REPAIR DETAIL

C.H. 5 (SHATTUC ROAD)
OVER LOST CREEK
SECTION 02-00079-00-BR
CLINTON COUNTY
STATION 23+55
S.N. 014-3014