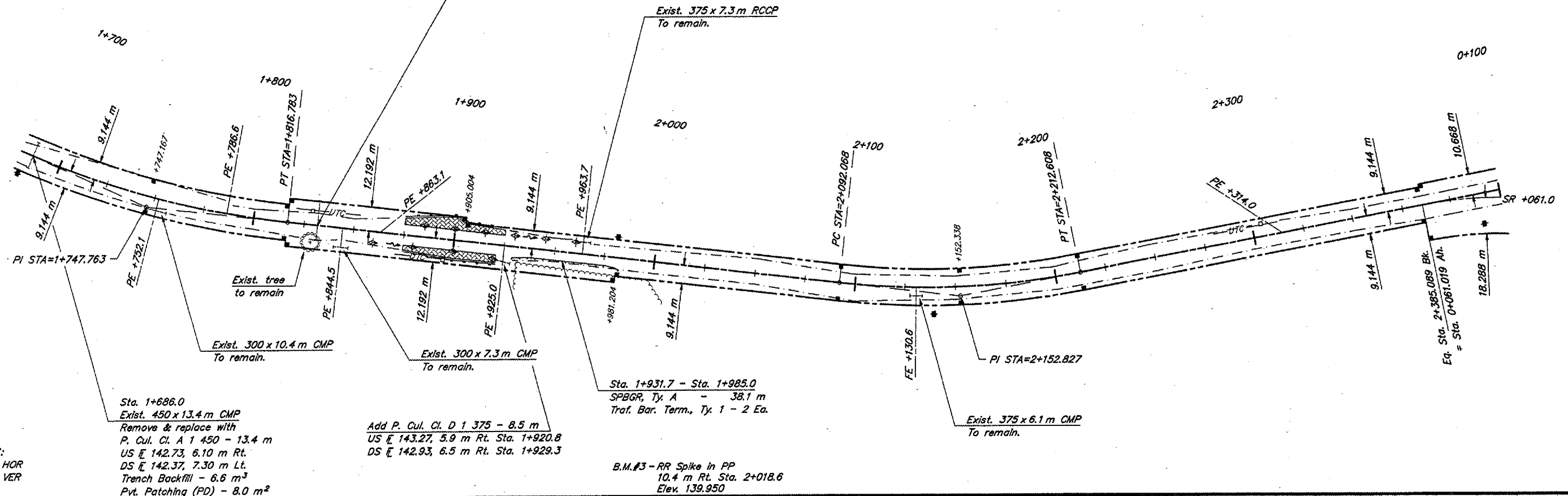


ROUTE	SECTION	COUNTY	TOTAL SHEETS	SHEET NO.
FAS 1934	93-00017-01-RS	HARDIN	30	4
PROJECT NO. STPSR-1934 (108)			CONTRACT NO. 99171	

CURVE DATA
 $\Delta = 18^{\circ}15'59''$ $T = 70.211$ m
 $R = 436.724$ m $L = 139.231$ m
 $S.E. = 6.3\%$ $E = 5.608$ m
 Attain Sta. 1+636.1 - Sta. 1+692.9
 Remove Sta. 1+801.5 - Sta. 1+858.3

CURVE DATA
 $\Delta = 17^{\circ}47'30''$ $T = 60.759$ m
 $R = 388.184$ m $L = 120.540$ m
 $S.E. = 6.7\%$ $E = 4.726$ m
 Attain Sta. 2+048.9 - Sta. 2+108.3
 Remove Sta. 2+196.4 - Sta. 2+255.8



SCALES:
 1:1000 HOR
 1:100 VER

4:00P2EC 02/04/03 12:06 RM

